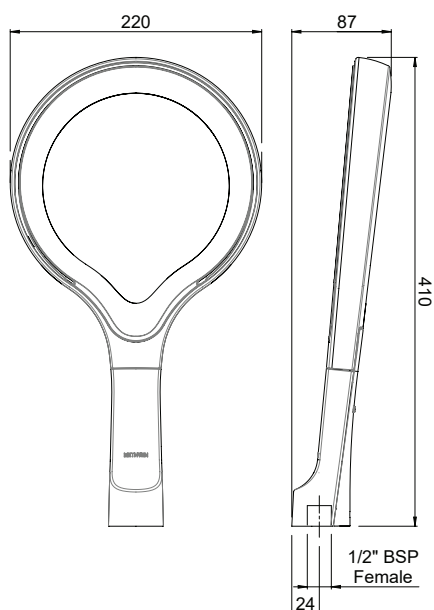


METHVEN

AIO AURAJET OVERHEAD SHOWER



AOOSCPAU
2299911



AOOSCPWHAU
2299912

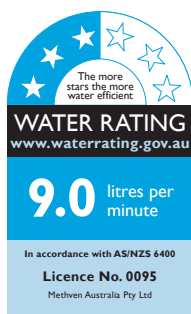
SPECIFICATIONS

| | |
|---------------------------------|---|
| Recommended Use | Domestic, hotel and commercial |
| Colour | Chrome, and Chrome with white face |
| Pressure Rating | Suitable for high pressure applications and has been WELS certified to the following: Minimum operating pressure 100kPa Maximum operating pressure 500kPa |
| Temperature Rating | Maximum continuous working temperature 70°C (recommended 38°C - 42°C) Minimum 5°C |
| Suitable Hot Water Units | Storage Tank: Yes Continuous Flow: Yes Gravity Feed: Not recommended |
| Spray Patterns | Aurajet Spray |

To see the complete AIO range go to
www.reece.com.au/bathrooms

CLEANING RECOMMENDATIONS

We recommend the use of soapy water or approved cleaners. This product should not be cleaned with abrasive materials. Damage caused by improper treatment is not covered by the product warranty – refer to warranty conditions.



Disclaimer: Products in this specification manual must by regulation be installed by licensed and registered trade people. The manufacturer/distributor reserves the right to vary specifications or delete models from their range without prior notification. Dimensions are nominal measurements only. Dimensions and set-outs listed are correct at time of publication however the manufacturer/distributor takes no responsibility for printing errors.

Tech Page Version 1

METHVEN

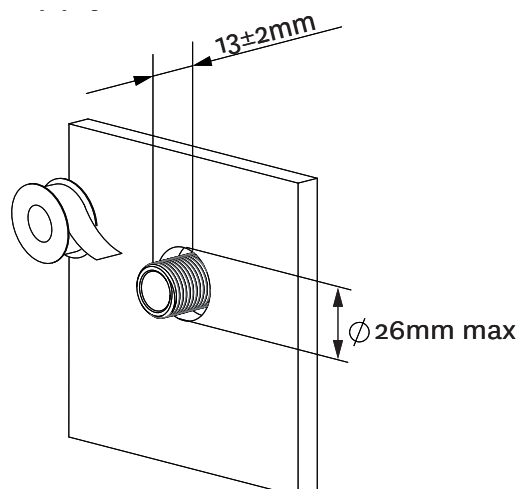
reece

IMPORTANT: Please read all of the instructions and turn off water supply before installation.

INSTALLATION INSTRUCTIONS

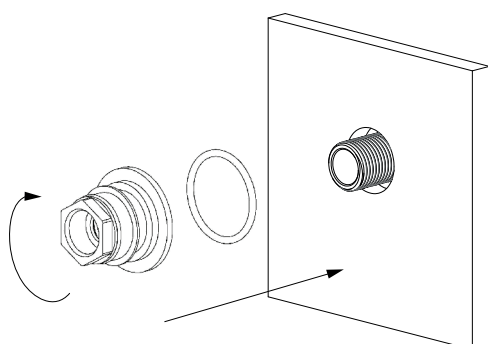
Step 1

- Recommended installation height is 2100mm from the ground.
- Wall lining hole should be cut or finished as per the dimension shown in the diagram on the right.
- Cut off the threaded nipple $13\pm 2\text{mm}$ from the wall lining and apply thread seal tape to ensure a good seal.



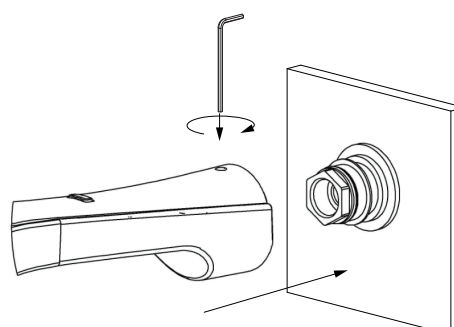
Step 2

- Ensure o-ring is located on the inlet connector.
- Screw the inlet connector onto the nipple ensuring that the o-ring is sufficiently compressed to create a watertight seal.



Step 3

- Push the overhead shower onto the inlet connector.
- Ensure that the overhead shower is oriented horizontally
- Secure in place by tightening the grub screw firmly using the hex key provided



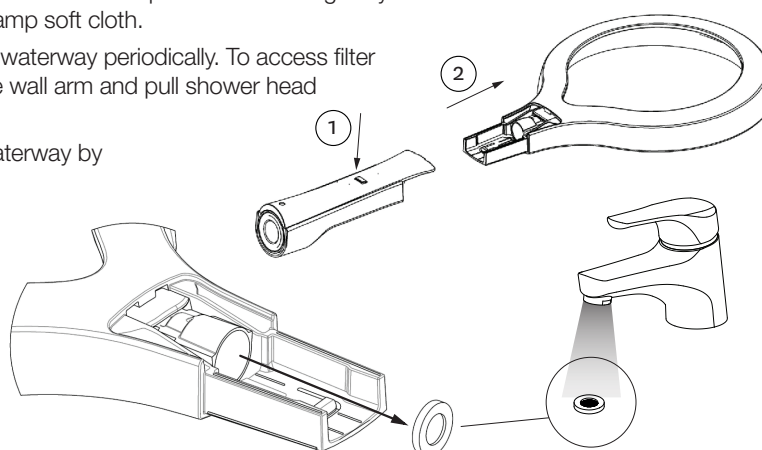
Care and Cleaning

Run hot water through shower for 2 minutes before first use.

Never use abrasives or abrasive cleaning agents to clean this product. Clean regularly with contamination free warm soapy water and a damp soft cloth.

Clean filter washer located in the shower head waterway periodically. To access filter washer, push down on release button, hold the wall arm and pull shower head away from it.

Remove filter washer from the shower head waterway by gently levering out with a small screw driver.



Plumbers, please ensure a copy of the installation instructions is left with the end user for future reference

METHVEN

reece