



Backflow Prevention

700 Series Dual Check Valve 15-40mm

Application

Designed for installation on water lines to protect against both backsiphonage and backpressure of polluted water into the water supply. Dual Check Valve shall provide protection where a potential hazard exists. (Low Hazard)

Standards Compliance

Australian WaterMark and Standards Mark

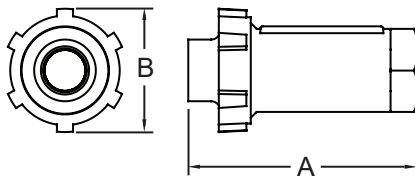


Materials

Main valve body Cast Bronze
 Elastomers EPDM, Buna Nitrile
 Springs Stainless Steel 300 Series
 Polymers Noryl, Delrin

Operating Parameters

Maximum Working Water Pressure 1200kPa
 Maximum Working Temperature 82°C

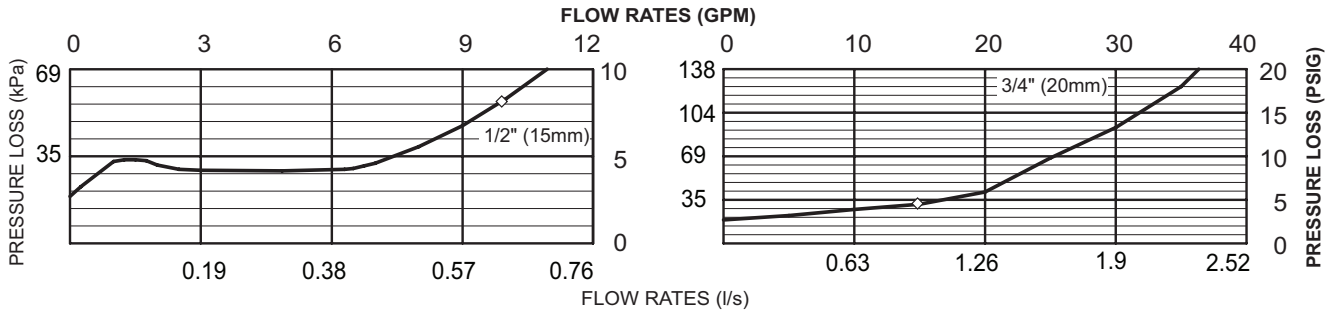


Dimensions & Weights (do not include pkg.)

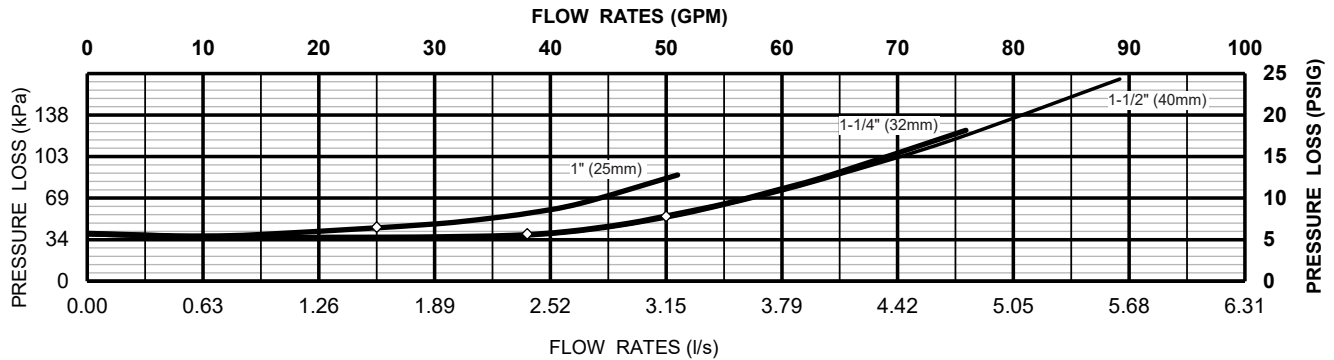
VALVE SIZE mm	REECE CODE	ZURN CODE	DIMENSIONS (approximate)		WEIGHT Kg
			A mm	B mm	
15	1011082	15-700DC	81	45	0.5
20	1011270	20-700DC	114	51	0.9
25	1011271	25-700DC	114	51	0.9
32	1006726	114UFX114F-700FPBS	160	86	1.5
40	1006728	112UFX112F-700FPBS	160	86	1.5

Flow Characteristics

MODEL 700 15mm & 20mm (STANDARD & METRIC)

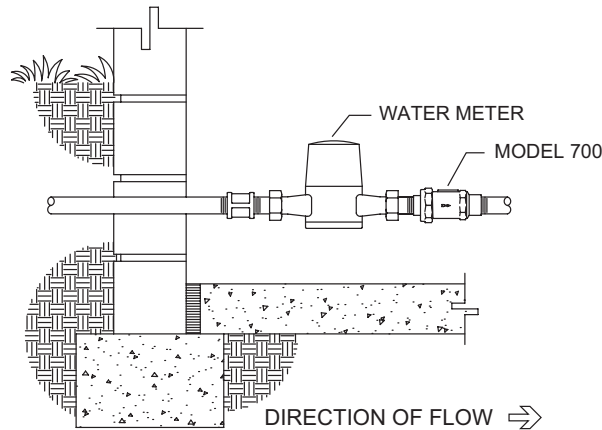


MODEL 700 25mm, 32mm, 40mm (STANDARD & METRIC)



Typical Installation

Local codes shall govern installation requirements. To be installed in accordance with the manufacturers' instructions and the latest edition of the Plumbing Code of Australia and/or AS/NZS 3500. Unless otherwise specified, the assembly shall be mounted at a minimum of 12" (305mm) and a maximum of 30" (762mm) above adequate drains with sufficient side clearance for testing and maintenance. The installation shall be made so that no part of the unit can be submerged.



Specifications

The Dual Check Valve Backflow Preventer shall be WaterMark® certified. The main body shall be cast bronze (ASTM B 584), the check assemblies shall be NORYL™ (15mm) or DELRIN® (20mm-40mm). The seal ring and O-rings shall be Buna Nitrile. The Dual Check Valve shall be a ZURN WILKINS Model 700.