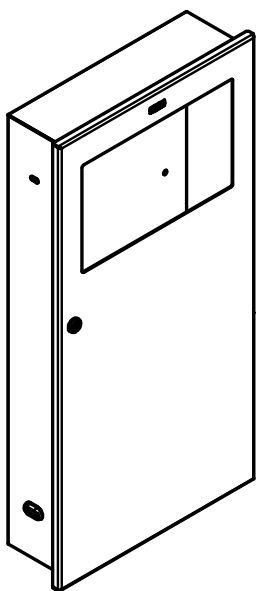
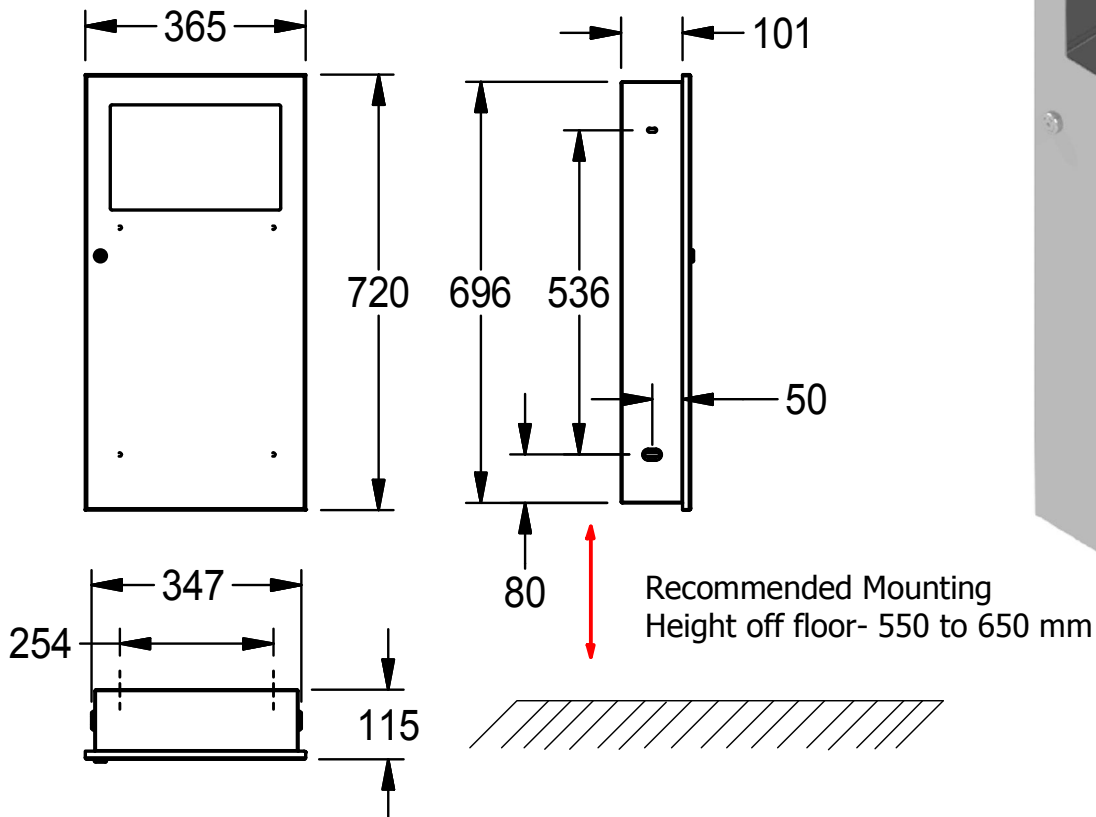
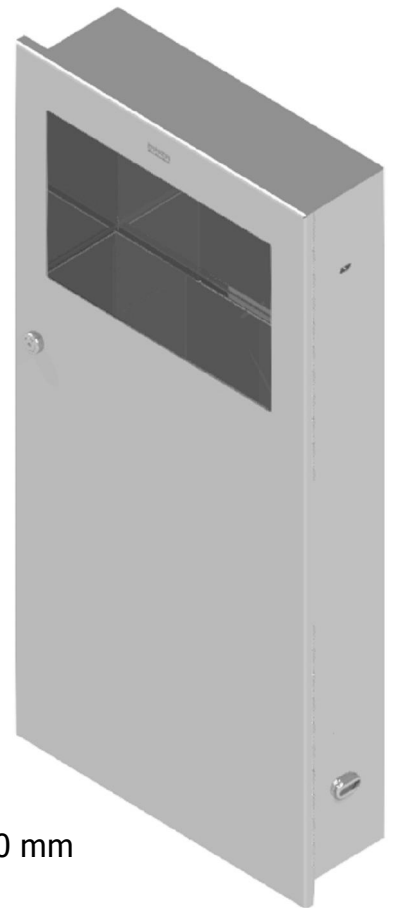


Installation and Operating Instructions

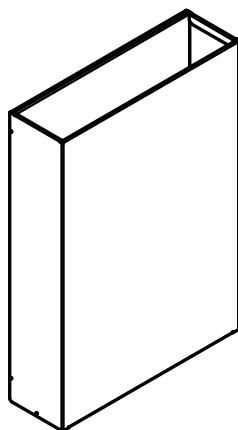
FRK204104E-Waste Bin 13.5L, RM

2030048723

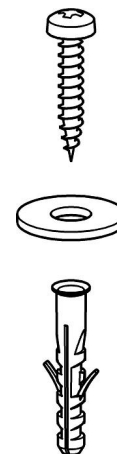
365 x 720 x 115



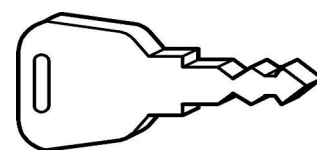
1x



1x



4x



1x

MATERIALS:

1. SS304 Grade Stainless steel; all the surfaces have satin-finish.

INSTALLATION GUIDELINES:

Wall Opening Dimensions:

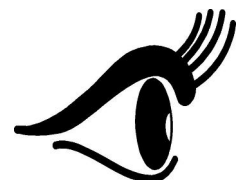
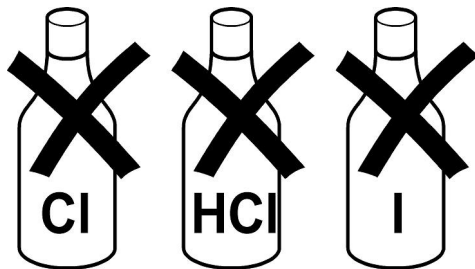
Width-349mm
Height-699mm
Depth-103mm

1. Once the wall opening has been recessed, use the keys provided to open the door of the unit.
2. Remove the waste bin from the unit.
3. Place the unit in to the recessed wall and mark the exact point and the mounting hole distance.
4. Drill mounting holes on the wall using the reference marked dots.
5. Fix the plastic dowel in to the hole and make sure they are flushed with the wall.
6. Now place the unit in to the wall and install the screws into the mounting holes.
7. After finishing if the unit is loose, make sure the screws are all the way in and the screw heads are the only visible parts.
8. Finally place the waste bin in to the unit and close the door.

REPLACEMENT PARTS:

1. Lock and key set- 2000103362

NOTE:



www.franke.com/ae/en/ws

Franke L.L.C
P.O. Box 14511
Ras Al Khaimah / United Arab Emirates
t: +971 (0)7 2034 700
e: ws-info.ae@franke.com

FRANKE