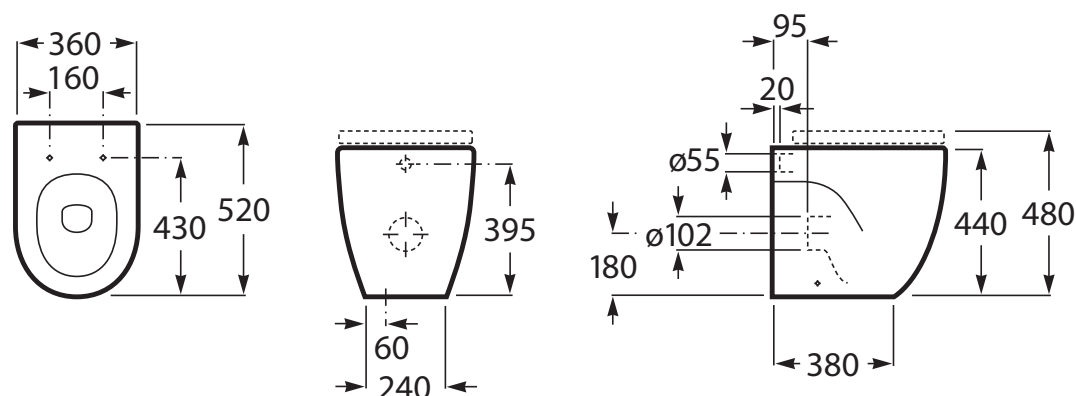


ROCA

MERIDIAN COMFORT HEIGHT BACK TO WALL PAN



Dimensions are nominal measurements only.

SPECIFICATIONS

Recommended Use	Domestic, hotel and commercial
Material	Vitreous China
Colour	White
Rim Configuration	Box Rim
Bowl Configuration	P Trap (Converts to S using plastic S-bend provided)
Seat	Matching top-fix, soft-close, quick-release seat supplied with pan
Pan Fixing	Screwed to the floor using brackets (supplied) and bedded with sealant



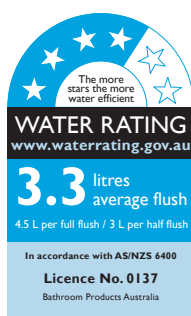
To see the complete ROCA range go to www.reece.com.au/bathrooms

CLEANING RECOMMENDATIONS

We recommend the use of soapy water or approved cleaners.

This product should not be cleaned with abrasive materials.

Damage caused by any improper treatment is not covered by the product warranty. Refer to Warranty Conditions.



Disclaimer: Products in this specification manual must by regulation be installed by licensed and registered trade people. The manufacturer/distributor reserves the right to vary specifications or delete models from their range without prior notification. Dimensions are nominal measurements only. Dimensions and set-outs listed are correct at time of publication however the manufacturer/distributor takes no responsibility for printing errors.

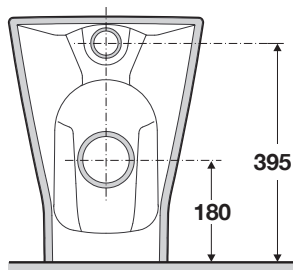
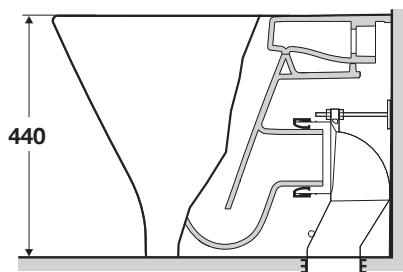
Tech Page Version 2



ROCA

MERIDIAN COMFORT HEIGHT BACK TO WALL PAN

INSTALLATION INSTRUCTIONS



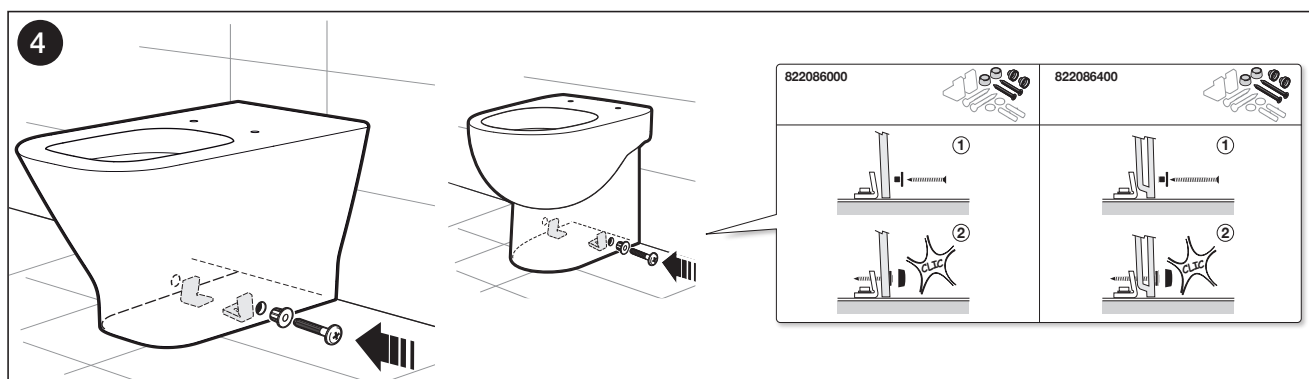
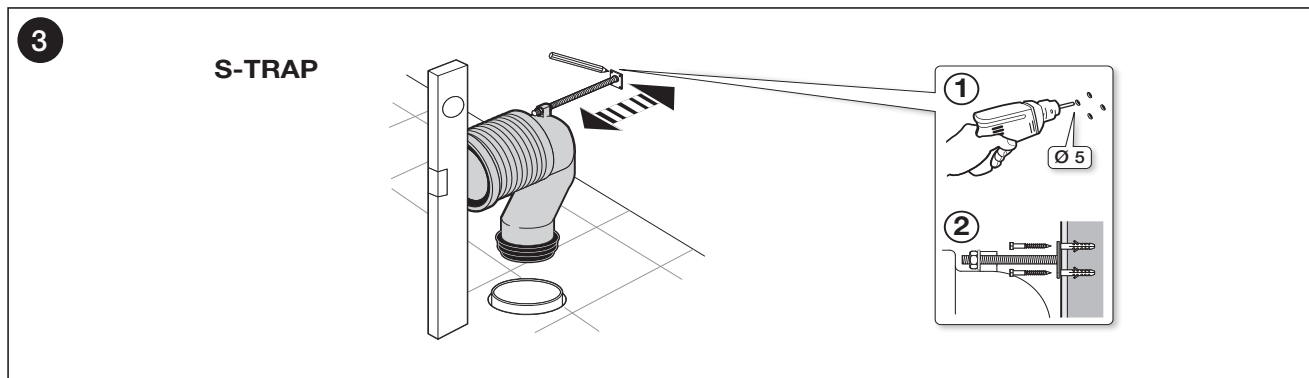
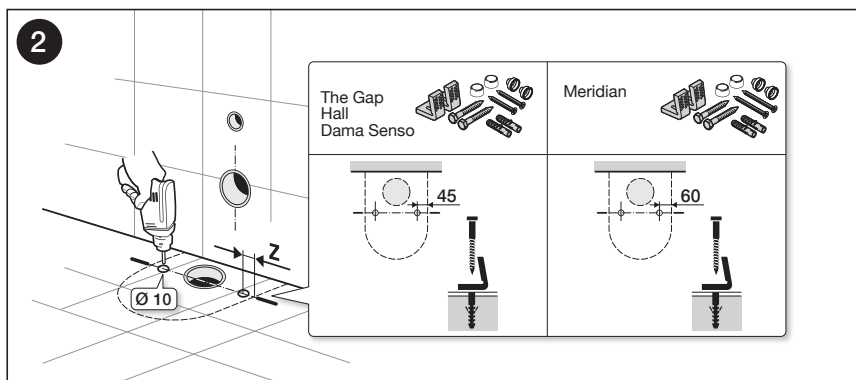
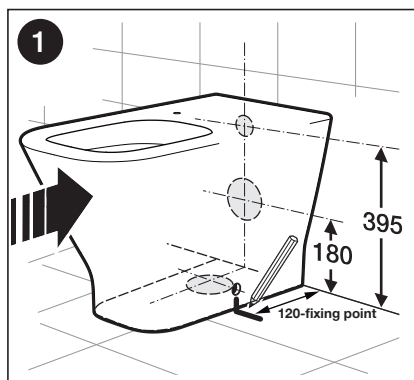
S-TRAP

AV0007000R

RANGE	X (mm)
MERIDIAN	95
The GAP	95 (min) 125 (max)

P-TRAP

RANGE	Y (mm)
MERIDIAN	95
The GAP	125

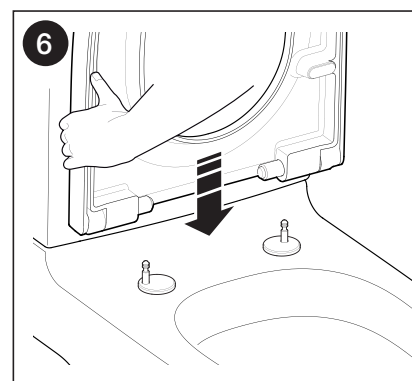
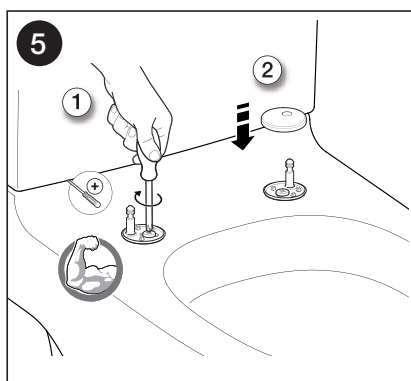
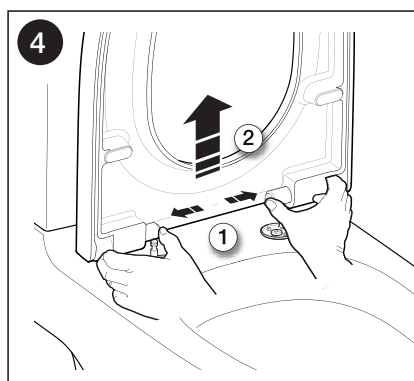
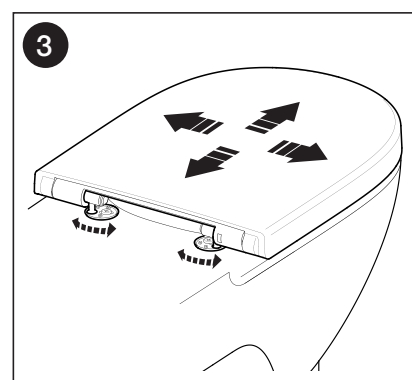
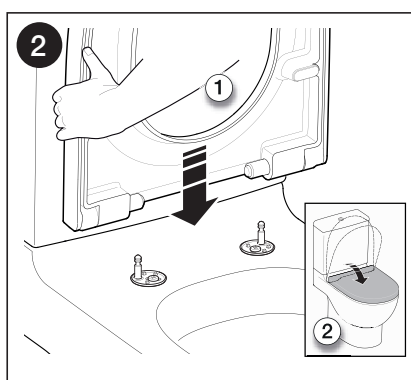
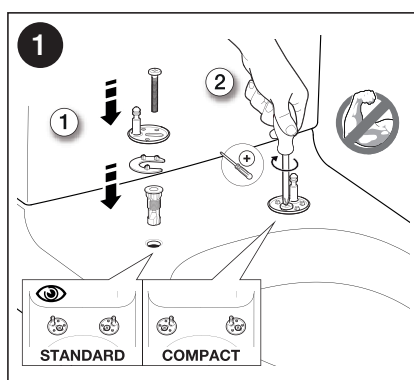
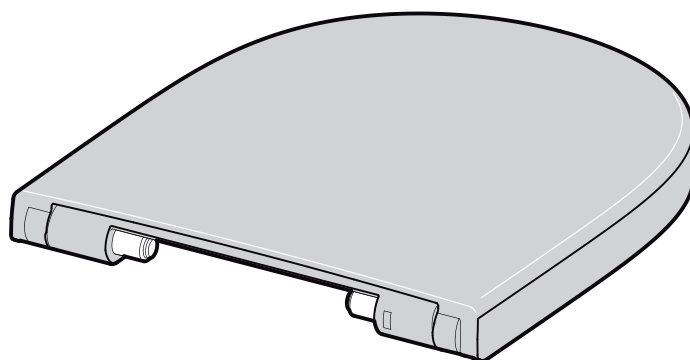


Plumbers, please ensure a copy of the installation instructions is left with the end user for future reference

ROCA

MERIDIAN COMFORT HEIGHT BACK TO WALL PAN

INSTALLATION INSTRUCTIONS - SEAT

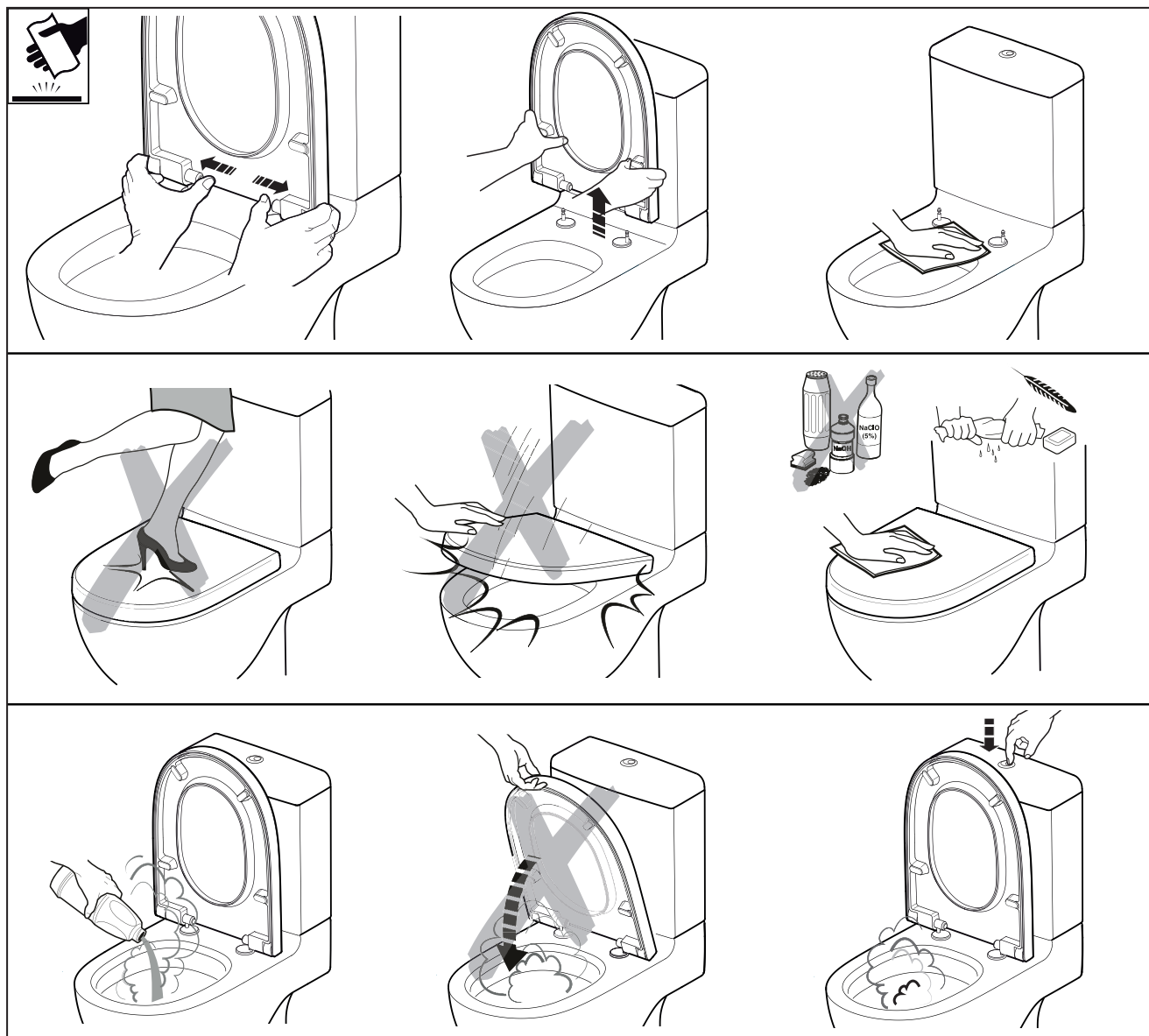


Plumbers, please ensure a copy of the installation instructions is left with the end user for future reference

ROCA

MERIDIAN COMFORT HEIGHT BACK TO WALL PAN

INSTALLATION INSTRUCTIONS - SEAT





Plumbers, please ensure a copy of the installation instructions is left with the end user for future reference

ROCA

MERIDIAN BACK TO WALL PAN

SPARE PARTS

Image	Reece Code	Product Description	Part Number
	9502798	Dura Pan Bend	
	9506260	Roca Meridian BTW Pan Floor Fixing Kit	AV0026800R
	9503570	Meridian SCQR SEAT Standard MKII	
	9504724	Roca Seat hinges set	WY911691212001
	9506350	Roca Seat Buffer Set	WY911801414001

Plumbers, please ensure a copy of the installation instructions is left with the end user for future reference