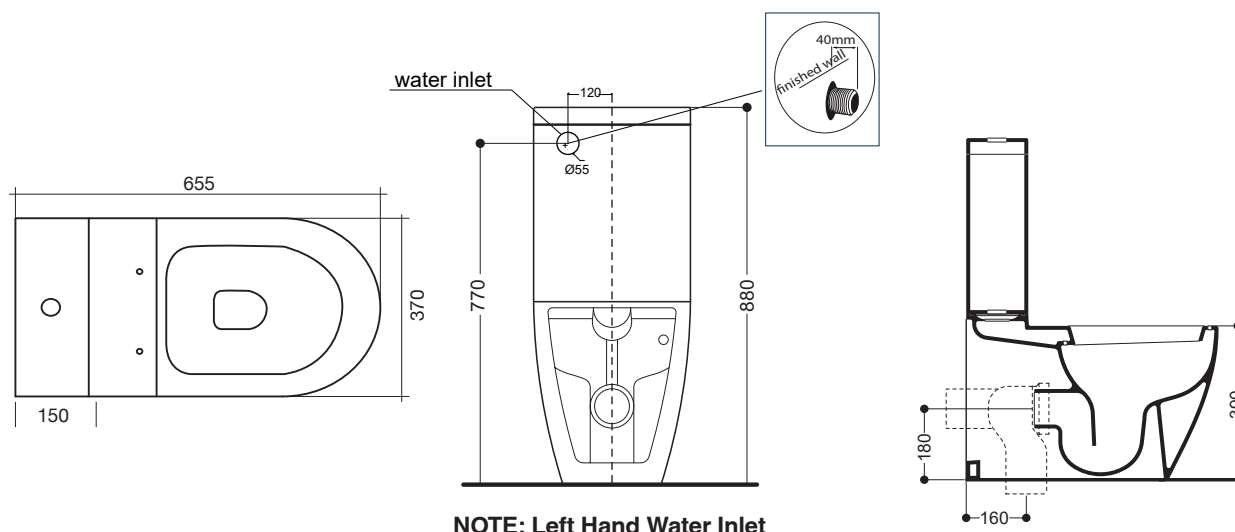


AXA

UNO CC BTW TOILET SUITE



SPECIFICATIONS

Recommended use	Domestic, hotel and commercial
Colour availability	White
Rim configuration	Box Rim
Bowl configuration	P Trap (converts to S using plastic S-bend provided)
Set out	S Trap: 160mm P Trap: 180mm fixed
Pan fixing	Screwed to floor using brackets supplied and bedded with sealant
Cistern fixing	Bolted directly to pan
Seat	Matching top fix Soft Close Quick Release seat supplied with suite
Material	Vitreous china
Weight	Pan: 28kg Cistern: 15kg
Standards	AS 1172.1 and AS 1172.2
Water inlet	Back inlet, left hand side
Cistern	4.5/3 litre dual flush
Inlet valve	Rec. max working pressure 1000kPa
Warranty	15 years (refer to warranty)



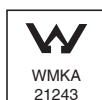
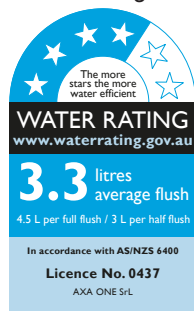
To see the complete AXA range go to www.reece.com.au/bathrooms

CLEANING RECOMMENDATIONS

We recommend the use of soapy water or approved bathroom cleaners.

This bathroom product should not be cleaned with abrasive materials.

Damage caused by any improper treatment is not covered by the product warranty - refer to Warranty Conditions.



Disclaimer: Products in this specification manual must by regulation be installed by licensed and registered trade people. The manufacturer/distributor reserves the right to vary specifications or delete models from their range without prior notification. Dimensions are nominal measurements only. Dimensions and set-outs listed are correct at time of publication however the manufacturer/distributor takes no responsibility for printing errors.

Tech Page Version 6

AXA

reece

AXA

UNO CC BTW TOILET SUITE

INSTALLATION INSTRUCTIONS

Note

All measurements for roughing in should be taken from finished wall/floor. Dimensions shown are nominal measurements only.

1. Rough in positions of water inlet and waste outlet (fig 1). Ensure Inlet connection extends 40mm from finished wall.
2. Mark out and drill floor fixing brackets into position (140mm apart, 295mm from the finished wall). Mark out and prepare plate, rod and plastic bend if installing the waste through the floor (fig 3).
3. Fit foam seal to cistern and fit onto the pan. Use the fixing screws to secure it into position.
4. For S trap - insert 'S' bend into pan collar, fix the pan bend connector back to the wall using the rod and bracket (fig 3).
5. P Trap installation - Set up waste pipe and cut to length. Align and push pan back to wall, connecting pan spigot into pan waste bend. Install cistern to pan.
6. Ensure that pan is level and that cistern aligns with

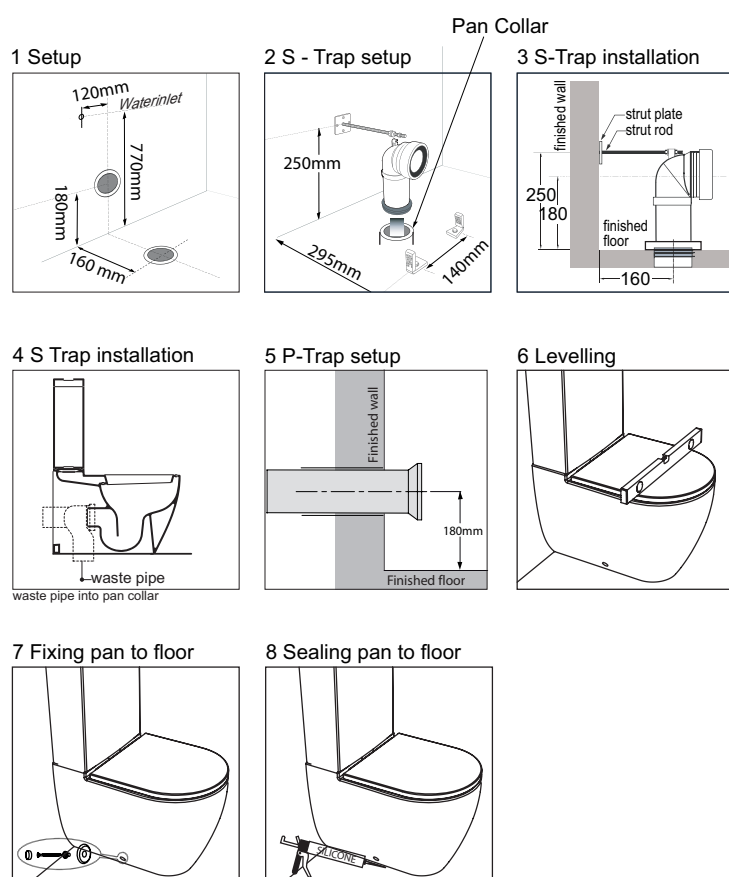
wall. Make minor adjustments if necessary.

7. Bucket flush and check for leaks.
8. Connect rear water inlet valve and flexible hose with elbow (supplied). Fill the cistern and ensure correct water level. For adjustment refer separate instructions for inlet valve.
9. Fix pan to floor using screws and caps provided.
10. Seal around base of pan with flexible sealant.

Installation of Toilet Seat and Cleaning (separate instructions enclosed)

It is recommended that toilet seat and cover be installed after all trades are finished. The high quality vitreous china finish on this sanitary ware can be maintained by simply using mild soapy water and wiping over. No abrasive cleaners or chemicals should be used on vitreous china surface or toilet seats as this may lead to surface damage.

Do not use any toilet cleaners in the cistern. As the chemical compound may effect the internal mechanisms.



Plumbers, please ensure a copy of the installation instructions is left with the end user for future reference

AXA

reecer