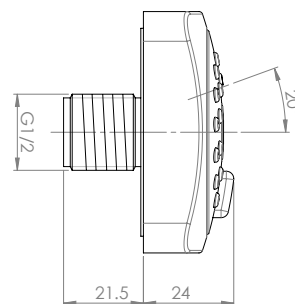
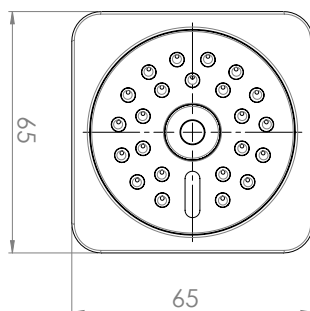


# TEKNOBILI

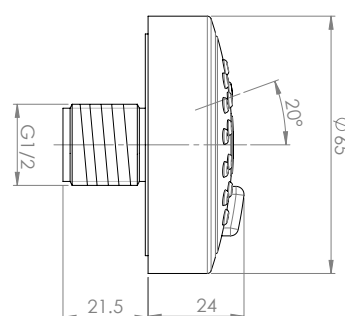
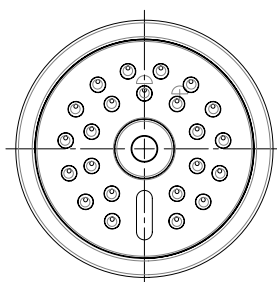
## LOOP, PLUS AND SOLIDO BODY SPRAY



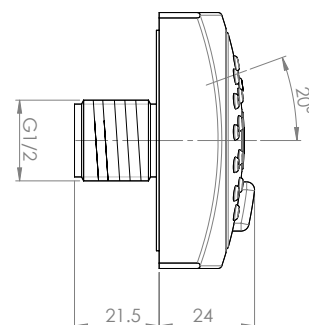
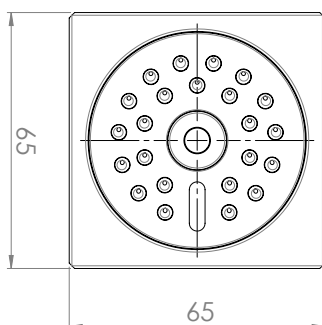
Loop Body Spray



Plus Body Spray



Solido Body Spray



Dimensions are nominal measurements only.

### SPECIFICATIONS

<b>Recommended use</b>	Domestic, hotel and commercial
<b>Colour availability</b>	Chrome
<b>Pressure rating</b>	Minimum operating pressure 150kPa Maximum operating pressure 500kPa
<b>Suitable Hot Water Units</b>	Continuous flow: Yes Storage tank: Yes Gravity fed: Not recommended

**NOTE: Body Sprays have a male threaded connection.**

To see the complete Teknobili range go to [www.reece.com.au/bathrooms](http://www.reece.com.au/bathrooms)

### CLEANING RECOMMENDATIONS

We recommend the use of soapy water or approved cleaners.

This product should not be cleaned with abrasive materials.

Damage caused by any improper treatment is not covered by the product warranty - refer to Warranty Conditions.

**Disclaimer:** Products in this specification manual must by regulation be installed by licensed and registered trade people. The manufacturer/distributor reserves the right to vary specifications or delete models from their range without prior notification. Dimensions and set-outs listed are correct at time of publication however the manufacturer/distributor takes no responsibility for printing errors.

Tech Page Version 1



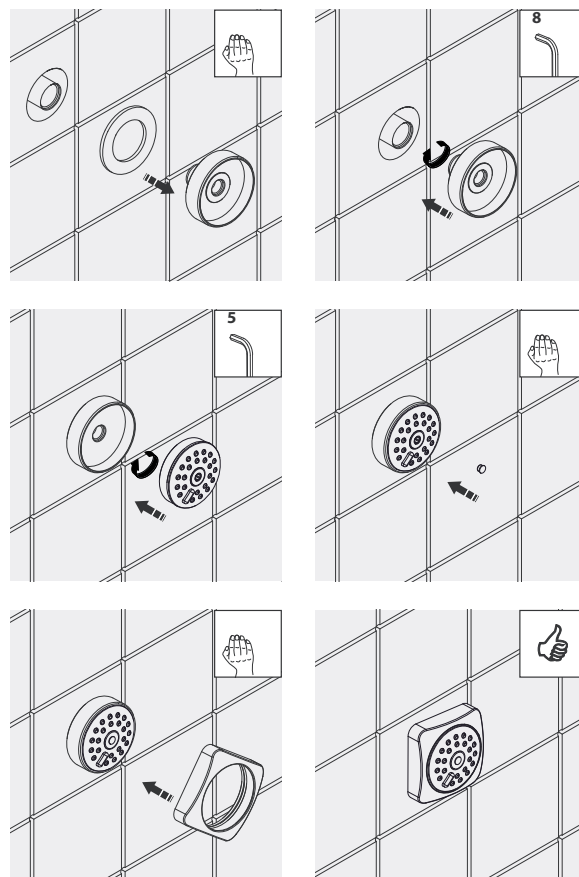
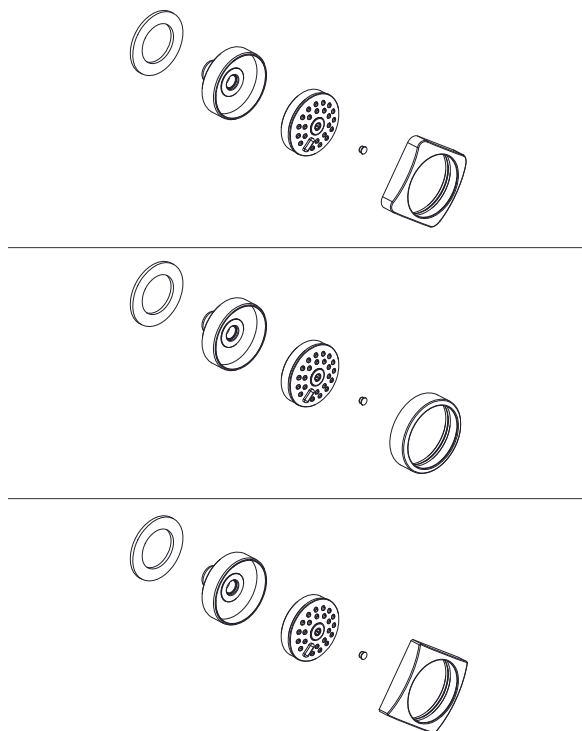
# TEKNOBILI

## LOOP, PLUS AND SOLIDO BODY SPRAY

### INSTALLATION INSTRUCTIONS

#### Important Note







Product must be installed to the requirements of AS/NZS 3500 by a qualified plumber.



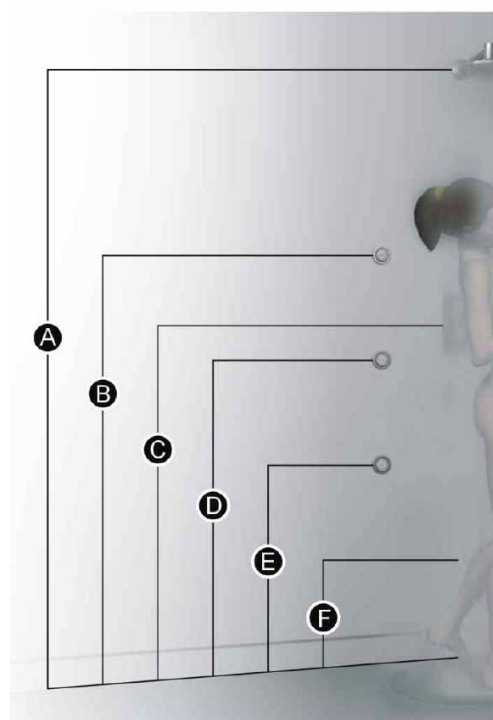
TEKNOBILI 

#### Wellness Experience

Use the table and image below as a guide for positioning of the body sprays and the foot wash along with the overhead shower. Customers can work with their trades for other showering combinations.

		160	170	180	190	205
		cm	cm	cm	cm	cm
A		210	210	220	230	240
B		130	140	150	160	175
C		115	120	125	130	135
D		95	105	115	125	135
E		60	70	80	90	95
F		25	25	30	30	35

Recommended positioning only



Plumbers, please ensure a copy of the installation instructions is left with the end user for future reference

TEKNOBILI 

**reece**