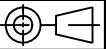
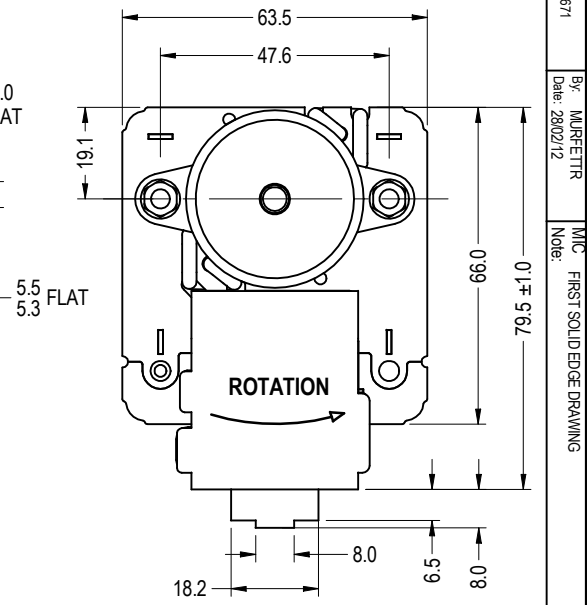
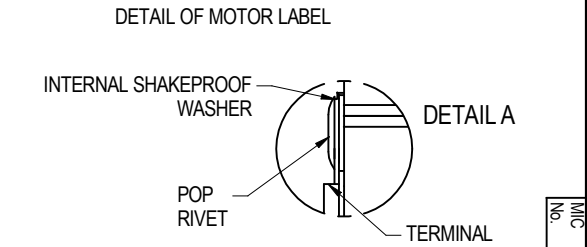
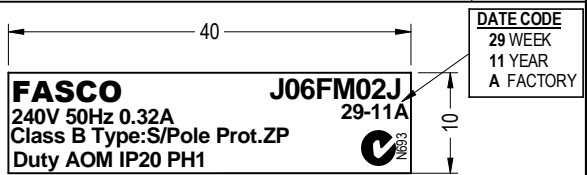
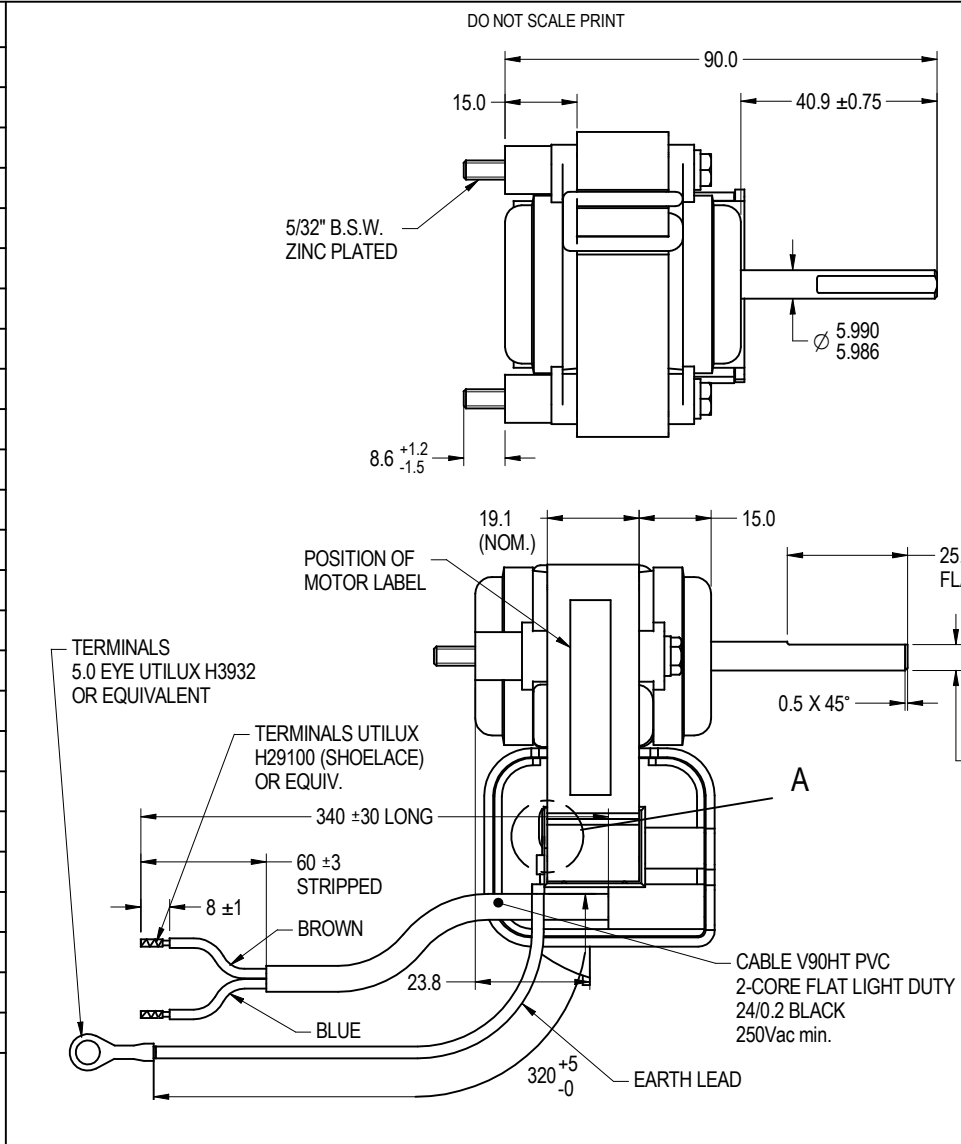


NOTE : FASCO AUSTRALIA IS HAPPY TO PROVIDE TECHNICAL ASSISTANCE TO OUR CUSTOMERS IN MANY AREAS. HOWEVER, SINCE FASCO AUSTRALIA IS NOT AWARE OF ALL DATA CONCERNING THE USE AND APPLICATION OF THIS MOTOR, THE SUITABILITY OF THE MOTOR FOR THE APPLICATION MUST BE DETERMINED BY AND IS THE RESPONSIBILITY OF THE CUSTOMER.



MOTOR SPECIFICATION				
CUSTOMER	KIRBY REFRIGERATION			
CUSTOMER P/N	MPB209-1			
QR No.		CAPACITOR	uf / V	
POWER OUTPUT	8.1 W	START		
MOTOR TYPE	S/POLE	RUN		
SUPPLY	VOLTS	HERTZ	PHASE	POLES
	240	50	1	2
ENCLOSURE	CLIP ON BOBBIN			
SPEED (RPM) AT RATED OUTPUT	2200	WINDING TYPE	SINGLE SP.	
ROTATION	ANTI-CLOCKWISE			
INSULATION CLASS	B	DUTY	AOM	
THERMAL PROTECTION	ZP			
RATED CURRENT	0.32	AMPS AT RATED OUTPUT		
APPLICATION	REFRIGERATION MOTOR			
MOUNTING	BOBBIN & SCREWS			
BEARING & LUBRICATION	BALL BEARING 626ZZ 140°C GREASE			
SUPPLY LEAD	COLOUR	BLACK		
	LENGTH	AS NOTED		
	TERMINALS	AS SHOWN		
	Q.C. HOUSING	N/A		
EARTH PROVISION	EARTH TAB AS SHOWN			
BASIC BUILD SPECIFICATION				
PERFORMANCE SPECIFICATION	SPM53001-01			
SHAFT MATERIAL	S12 14			
CONNECTION DIAGRAM		PAINT SPEC	CLEAR VANISH	



PACKAGING
20 - MOTORS PER BOX

ADDITIONAL PROTECTION :-
CORROSION INHIBITING PAPER IN EACH BOX
SHAFT COATED WITH RUST INHIBITOR

PALLET LABELS TO HAVE:-
FASCO NUMBER
DATE OF MANUFACTURE
QUANTITY
WEIGHT

PACK PARTS IN PLASTIC BAG AND ATTACH TO MOTOR LEAD.
2 - NUT 5/32" B.S.W. 5/16" A/F HEX ZINC PLATED
2 - 4 DIA INTERNAL SHAKEPROOF WASHER ZINC PLATED.

DIMENSIONS IN mm UNLESS OTHERWISE SPECIFIED

GENERAL TOLERANCES
LINEAR: X = ±1.0
 XX = ±0.25
 XXX = ±0.1
ANGULAR: X = 2°
 XX = ±0.5°

SURFACE FINISHES MAX 3.0 MICRO METRES
SYMBOLS PER A.S. 1100

This drawing remains the property of Fasco Australia Pty. Ltd. No part or parts of this drawing may be reproduced without written permission.

MAT'L		
FINISH		
DRAWN	MURFETTR	27/10/11
CHECKED	J.JAVIER	29/02/12
RELEASED	J.JAVIER	29/02/12
SCALE	NTS	



FRAME	.MOTOR	
STATUS	R	
SHEET	DWG. NO.	
	J06FM02J	
	REVISION	
	A	

MIC No. 003671
 By: MURFETTR Date: 28/02/12
 MIC No. FIRST SOLID EDGE DRAWING