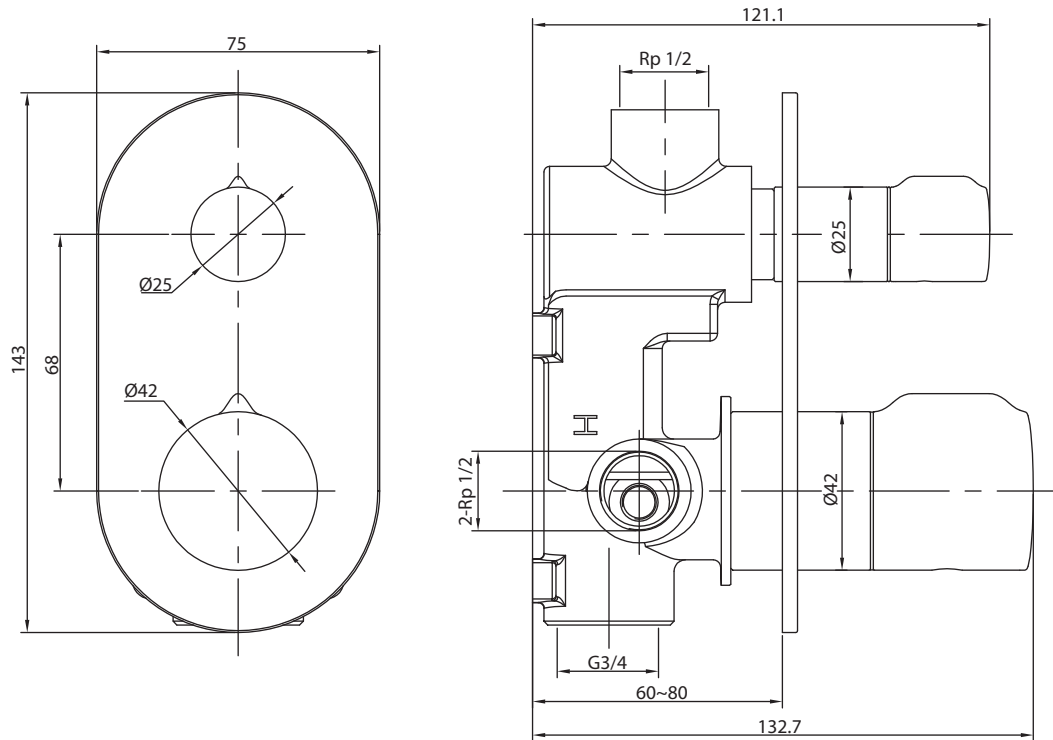


FLOW DIVERTER MIXER



Dimensions are nominal measurements only.

SPECIFICATIONS

Recommended Use	Domestic, Hotel & Commercial	
Colour	Chrome	
Material	Brass	
Pressure Rating	Minimum Continuous Working Pressure	150 kPa
	Maximum Continuous Working Pressure	500 kPa
Temperature Rating	Minimum Continuous Working Temperature	1°C
	Maximum Continuous Working Temperature	75°C
Suitable Hot Water Units	Storage Tank	Yes
	Continuous Flow	Yes
	Gravity Feed	No
Cartridge Type	Progressive	
Retrofit Suitability	No	



To see the complete MILLI range go to www.reece.com.au/bathrooms

CLEANING RECOMMENDATIONS

We recommend the use of soapy water or approved cleaners.

This product should not be cleaned with abrasive materials.

Damage caused by any improper treatment is not covered by the product warranty. Refer to Warranty Conditions.



FLOW DIVERTER MIXER

INSTALLATION INSTRUCTIONS

Note

Mixer must be installed by a licensed plumber.

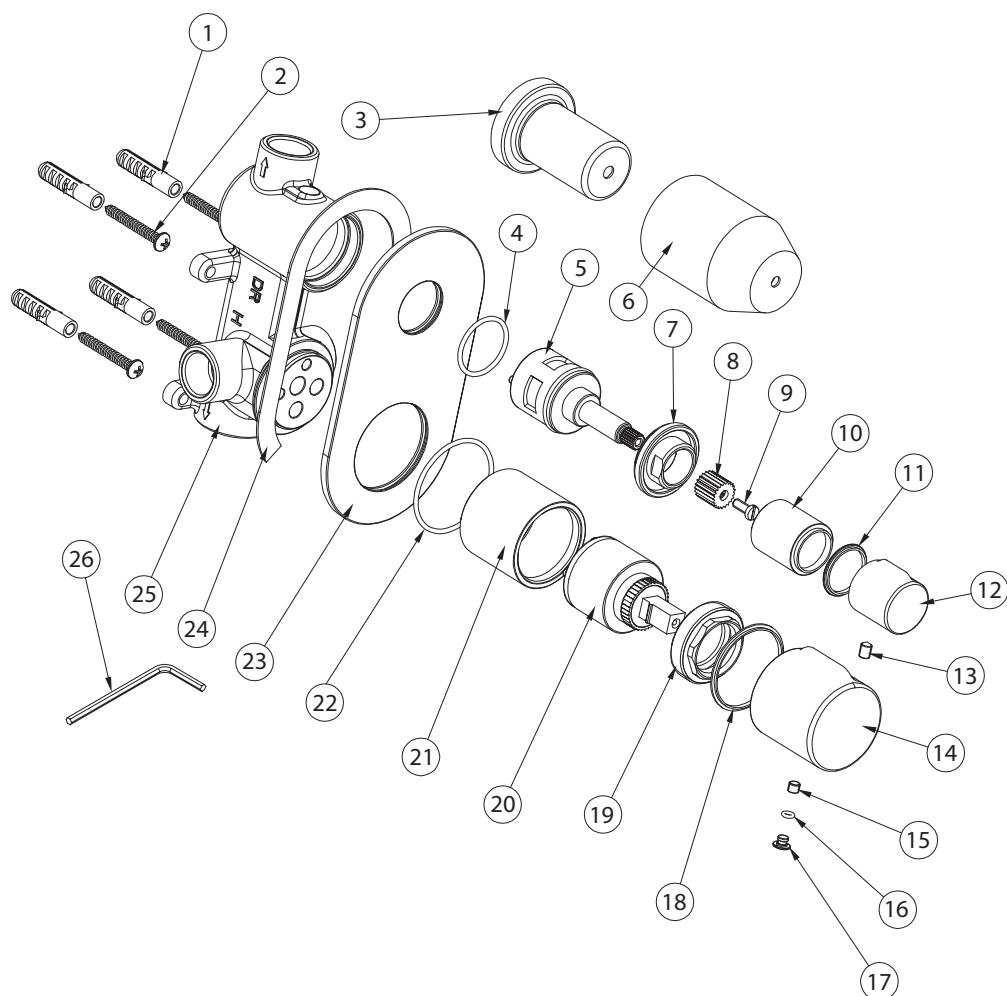
Important

Your mixer comes to you already factory assembled and tested. We do not recommend the dismantling of any internal part of the mixer. The mixers are factory tested and sealed so as to give the best performance.

Installation Procedure

1. Please flush out new pipe work prior to connecting the new mixer
2. During installation protect the exposed surface by using the plastic cover provided. Please pay attention to installation minimum/maximum depth
3. In a typical installation, the mixer is mounted on a timber/metal noggin and secured with screws
4. Shower Mixer Outlet must always face up toward shower. Connect mixer to hot and cold water supply
5. Pressure check all connections. Leaking joints are not covered by the warranty
6. When the wall is finished, remove the plastic cover and fit the cover plate, diverter knob and handle.

COMPONENT LISTING



No.	Description
14	Mixer Handle
15	Grub Screw
16	O Ring
17	Handle Cap
18	Washer
19	Cartridge Locknut
20	Cartridge
21	Cartridge Sleeve
22	O Ring
23	Mixer Cover Plate
24	Seal
25	Mixer Body
26	Allen Key