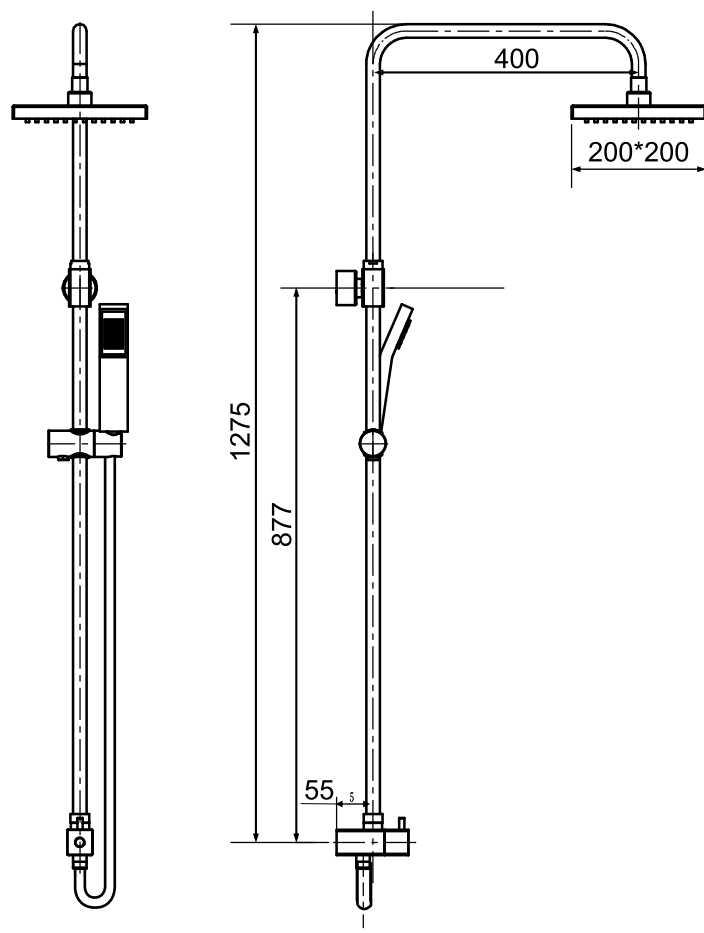


# American Standard

## CYGNET TWIN SHOWER SQUARE



Dimensions are nominal measurements only.

### SPECIFICATIONS

<b>Recommended Use</b>	Domestic, Commercial and Hotel
<b>Finish</b>	Chrome
<b>Pressure Rating</b>	Maximum continuous operating pressure 1000KPa  As per AS/NZS3500 pressure must be limited to 500 KPa on any new home, extensions or renovation. For best performance and longer life we recommend 150-500kPa. Hot and cold water inlet pressure should be equal.
<b>Temperature Rating</b>	Max working temperature 75°C
<b>Suitable Hot Water Units</b>	Storage tank: Yes Continuous Flow: Yes Gravity Feed: Not recommended

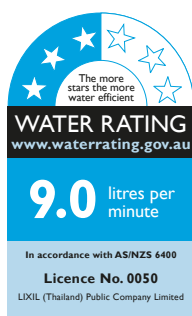
To see the complete AMERICAN STANDARD range go to [www.reece.com.au/bathrooms](http://www.reece.com.au/bathrooms)

### CLEANING RECOMMENDATIONS

We recommend the use of soapy water or approved cleaners.

This product should not be cleaned with abrasive materials.

Damage caused by any improper treatment is not covered by the product warranty. Refer to Warranty Conditions.



**Disclaimer:** Products in this specification manual must by regulation be installed by licensed and registered trade people. The manufacturer/distributor reserves the right to vary specifications or delete models from their range without prior notification. Dimensions are nominal measurements only. Dimensions and set-outs listed are correct at time of publication however the manufacturer/distributor takes no responsibility for printing errors.

Tech Page Version 1

*American Standard*

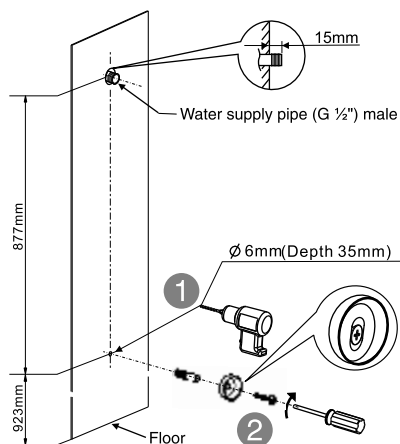


# American Standard

## CYGNET TWIN SHOWER SQUARE

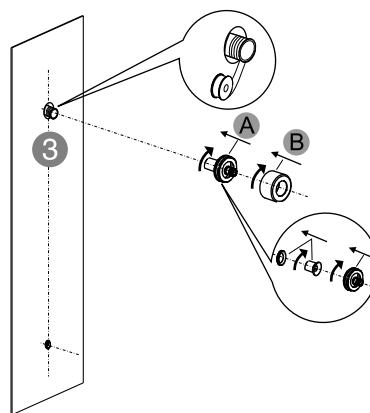
### INSTALLATION INSTRUCTIONS

1



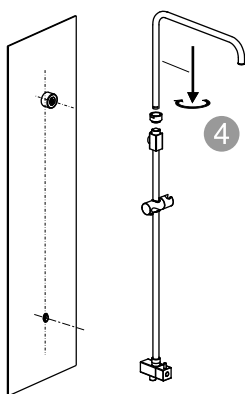
Drill hole according to the dimension. Anchor into the wall, then secure the base plate to the wall by using screw.

2



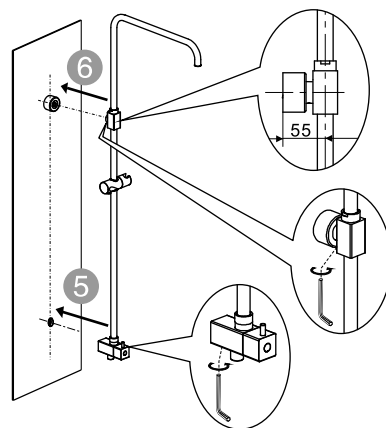
Screw inlet connector to the water supply pipe.

3



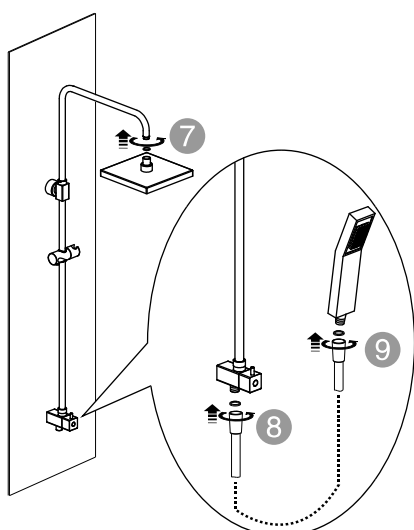
Fix the bent tube to the upper bracket as per diagram 4. To ensure upper bracket is positioned correctly the grub screw must be positioned underneath.

4



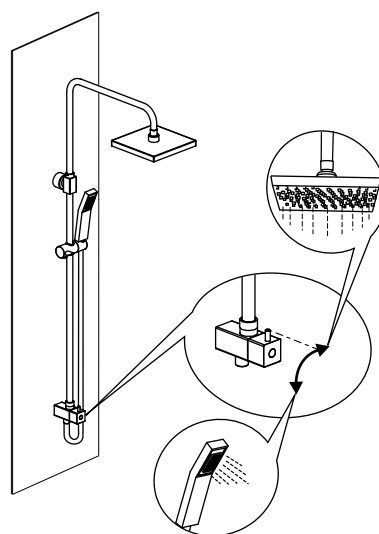
Fix the shower body to the shower rail, then tighten it with the In-hex wrench.

5



Screw shower head to bent tube, connect shower hose to hand shower and Adapter.

6

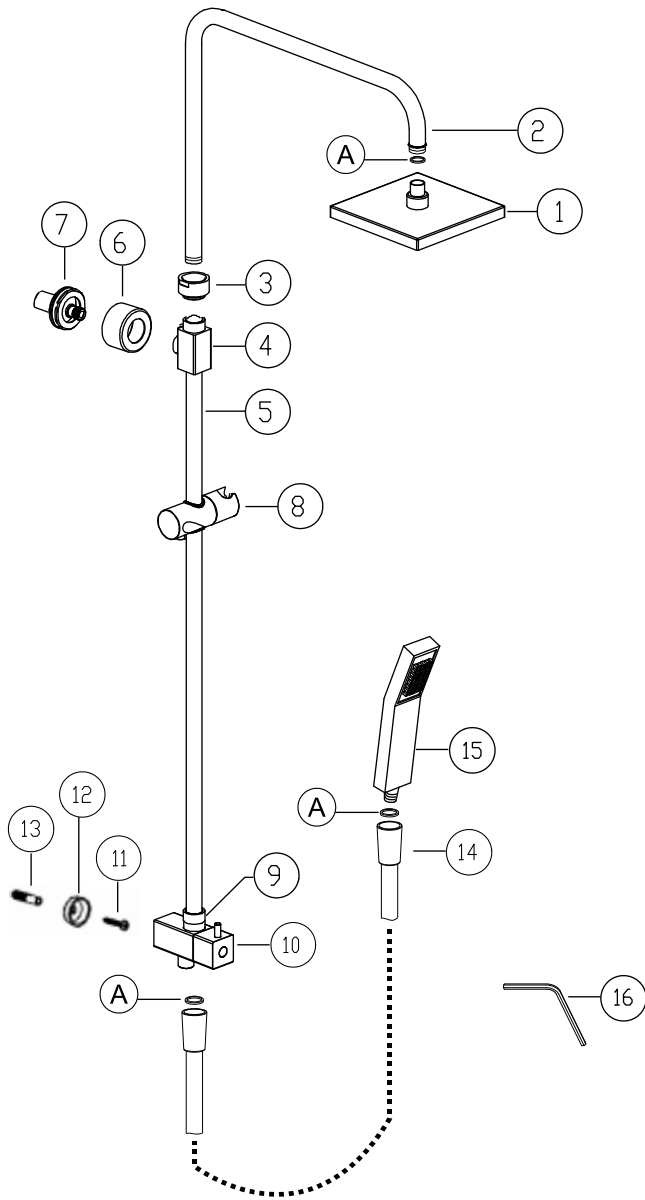


Apply pressure and check for leaks.

# American Standard

## CYGNET TWIN SHOWER SQUARE

### SPARE PARTS



Item	Description
1	Head shower
2	Rail tube
3	Nut
4	Fixed sleeve
5	Pipe
6	Bracket
7	Bracket base
8	Slider
9	Nut
10	Diverter Valve
11	Screw
12	Fixing Ring
13	Anchor
14	Hose
15	Handshower
16	L-wrench
A	Washer

Plumbers, please ensure a copy of the installation instructions is left with the end user for future reference

*American  
Standard*

