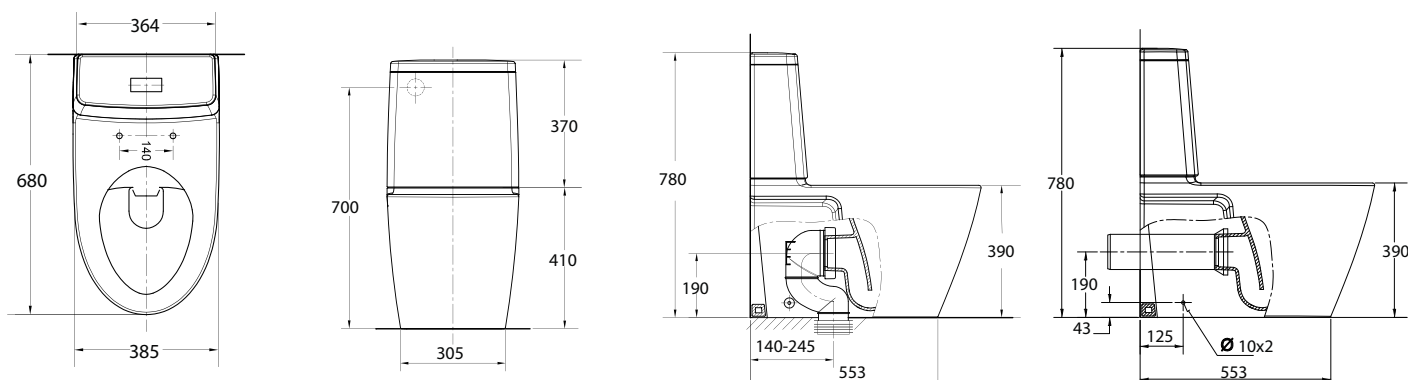


AMERICAN STANDARD

ACACIA E VORTEX CC BTW

INSTALLATION INSTRUCTIONS (BACK INLET)



***Dimensions are nominal measurements only.

SPECIFICATION

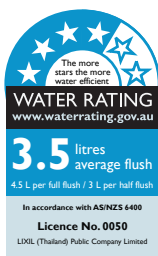
Recommended use	Domestic Hotel and Commercial
Material	Pan : Vitreous China Cistern : Vitreous China Seat : Urea
Colour	Pan: White Cistern: White Seat: White
Weight	Pan : 38.0 kg Cistern : 10.5 kg
Water Inlet Position	Back Inlet
Inlet valve	Recommended maximum working pressure 500kpa
Bowl Configuration	P trap (converts to S Trap using plastic s bend provided)
Rim Configuration	Rim less, Double vortex
Seat	Soft Close Seat
Cistern fixing	Bolted directly to bowl
Pan fixing	Screwed to the floor using brackets and bedded with sealant



To see the complete AMERICAN STANDARD range go to www.reece.com.au/bathrooms

CLEANING RECOMMENDATIONS

We recommend the use of soapy water or approved cleansers. This product should not be cleaned with abrasive materials. Damage caused by any improper treatment is not covered by the product warranty. Refer to Warranty Conditions.



Disclaimer : Products in this specification manual must by regulation be installed by licensed and registered trade people. The manufacturer/distributor reserves the right to vary specifications or delete models from their range without prior notification. Dimensions are nominal measurements only. Dimensions and set outs listed are correct at time of publication however the manufacturer/distributor takes no responsibility for printing errors.

Tech Page Version 1

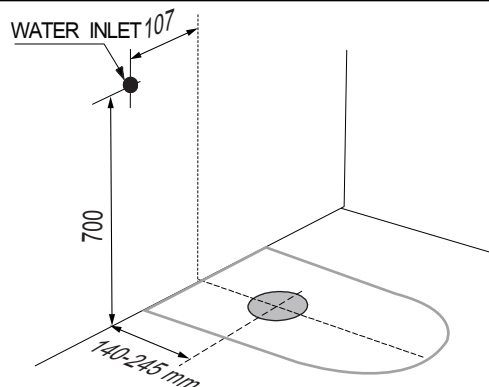
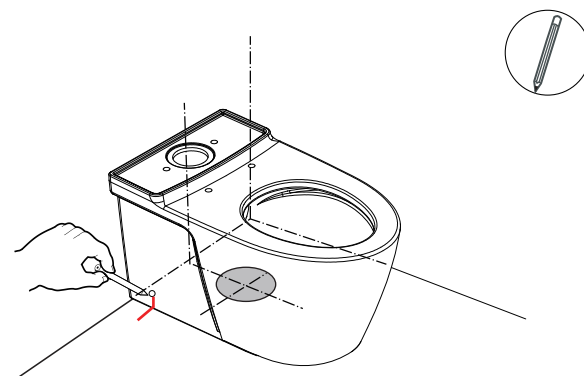
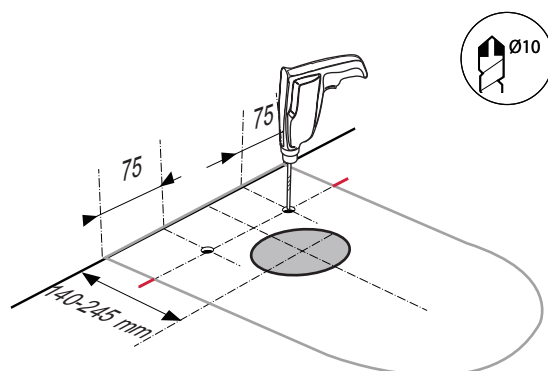
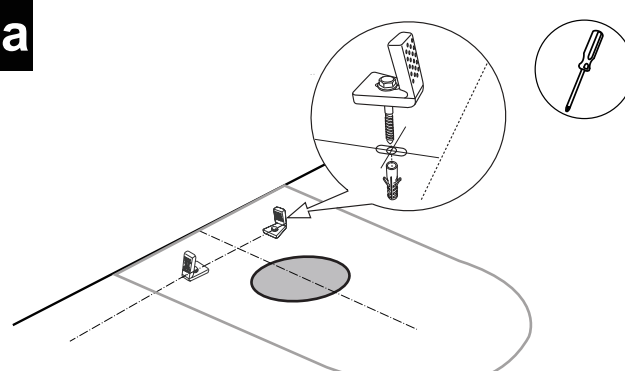
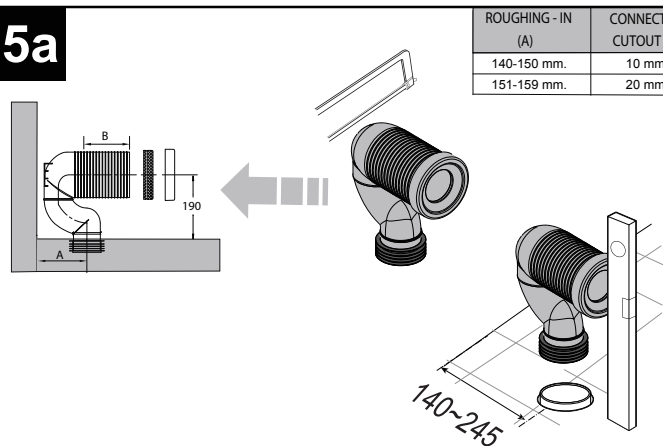
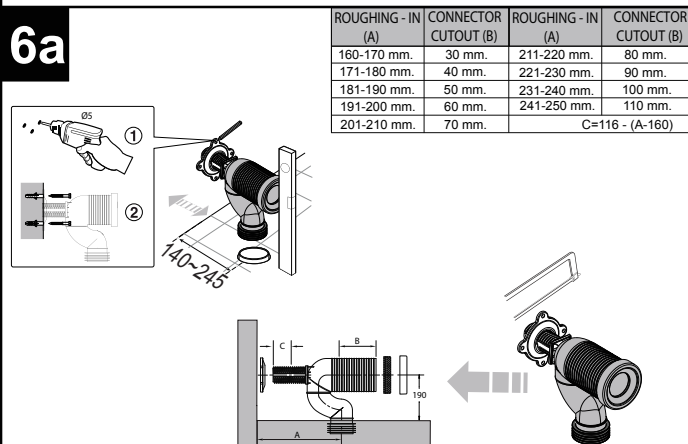
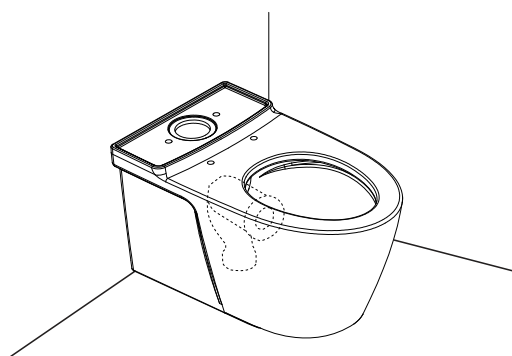
American
Standard



AMERICAN STANDARD

ACACIA E VORTEX CC BTW

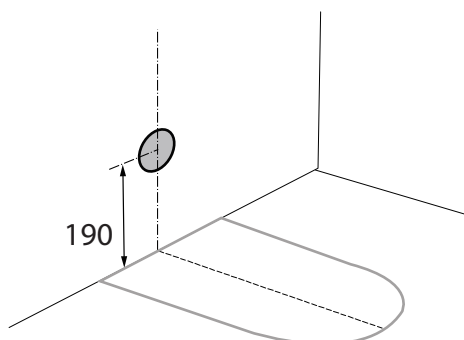
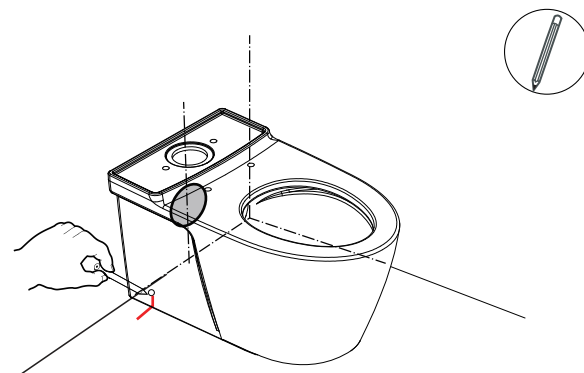
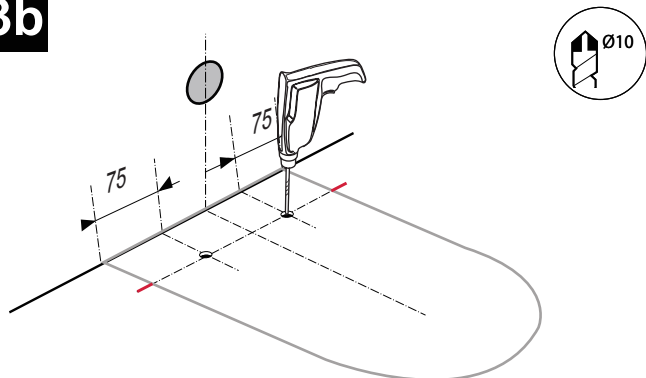
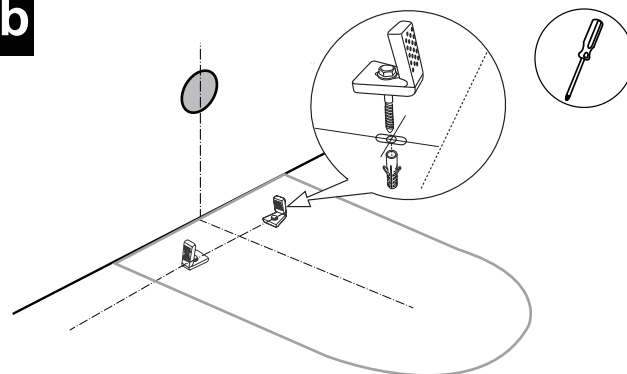
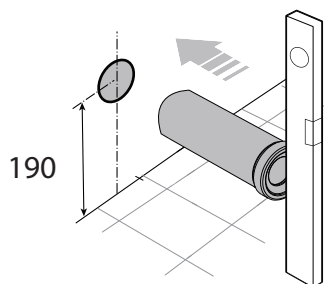
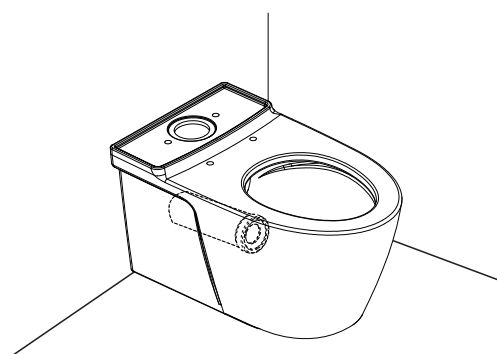
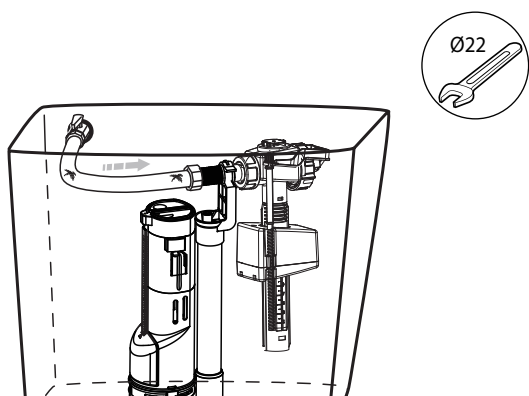
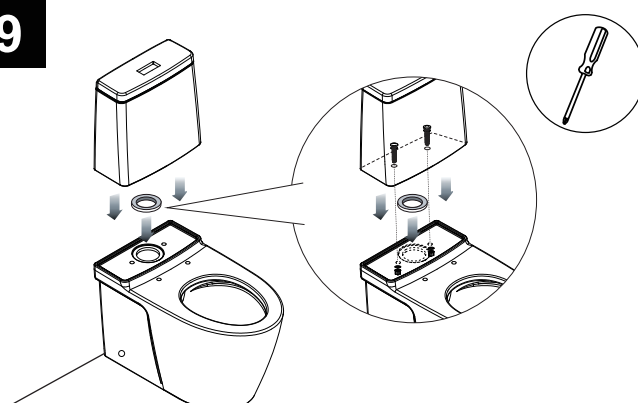
INSTALLATION INSTRUCTIONS (BACK INLET)

1a**2a****3a****4a****5a****6a****7**

AMERICAN STANDARD

ACACIA E VORTEX CC BTW

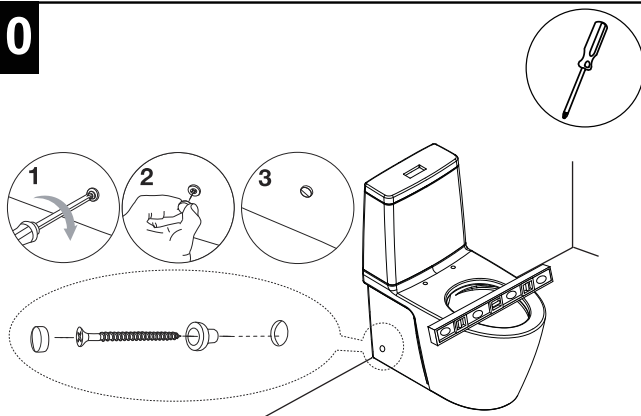
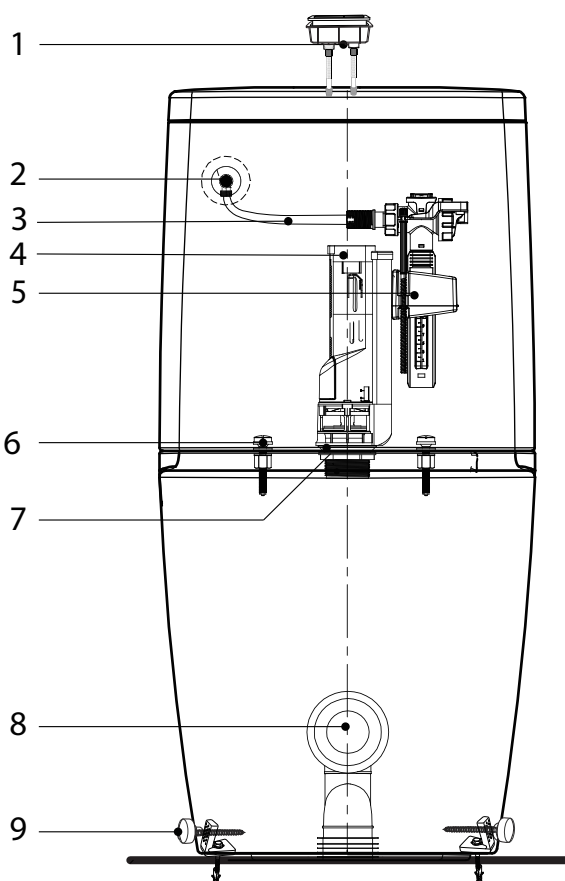
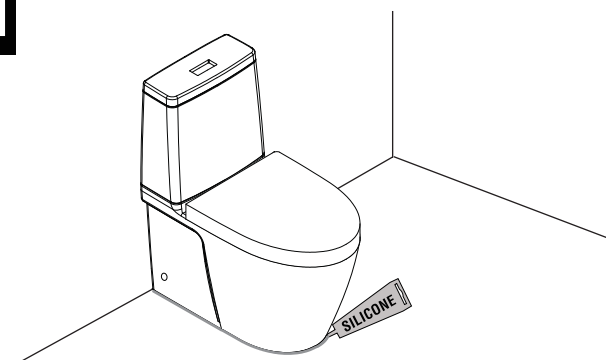
INSTALLATION INSTRUCTIONS (BACK INLET)

1b

2b

3b

4b

5b

6b

8

9


AMERICAN STANDARD

ACACIA E VORTEX CC BTW

INSTALLATION INSTRUCTIONS (BACK INLET)

10

11


1 - 9507355	FLUSH BUTTON KIT
2 - 103510	MINI STOP CHROME 15MM
3 - 107616	FLEX HOSE WATER (PVC) 1/2"ELB 300MM
4 - 1817018	DUAL FLUSH OUTLET VALVE COMPLETE
5 - 9500475	SIDE/BACK INLET VALVE
6 - 9504528	TOP FIX CISTERN BOLTS (PAIR)
7 - 9506467	CC CISTERN TO PAN RUBBER SEAL
8 - 9503902	PAN BEND
9 - 9500851	PAN FIXING BRKT &COVER