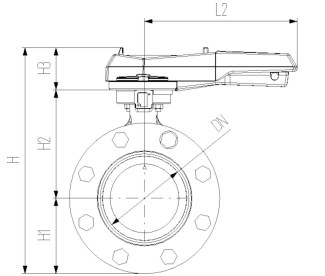




## COOL-FIT 4.0 Butterfly valve kit type 567, hand-operated

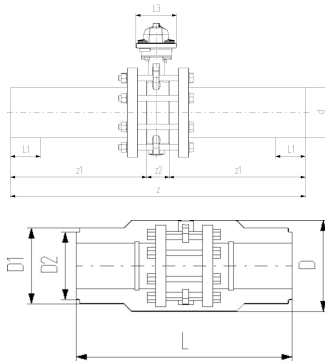
### Model:

- Material: ABS with spigot PE100 SDR11, metric
- Including flange adaptors, backing flanges PP-Steel, bolts and insulation half shells
- Separate Fittings type A needed for joining



| d<br>(mm) | DN<br>(mm) | PN | kv-value<br>( $\Delta p=1$ bar)<br>(L/min) | EPDM<br>Code       | Weight<br>(kg) |
|-----------|------------|----|--|--------------------|----------------|
| 110       | 100        | 10 | 6500                                       | <b>138 567 114</b> | 8.950          |
| 160       | 150        | 10 | 16600                                      | <b>138 567 117</b> | 17.975         |
| 225       | 200        | 10 | 39600                                      | <b>138 567 120</b> | 28.316         |

| d<br>(mm) | DN<br>(mm) | D<br>(mm) | D1<br>(mm) | D2<br>(mm) | L<br>(mm) | L1<br>(mm) | L2<br>(mm) | L3<br>(mm) | H<br>(mm) | H1<br>(mm) | H2<br>(mm) | H3<br>(mm) | z<br>(mm) | z1<br>(mm) | z2<br>(mm) |
|-----------|------------|-----------|------------|------------|-----------|------------|------------|------------|-----------|------------|------------|------------|-----------|------------|------------|
| 110       | 100        | 310       | 188        | 168        | 556       | 72         | 255        | 106        | 325       | 104        | 167        | 55         | 696       | 320        | 56         |
| 160       | 150        | 358       | 259        |            | 720       | 90         | 255        | 115        | 143       | 143        | 203        | 55         | 895       | 412        | 72         |
| 225       | 200        | 409       | 325        |            | 776       | 110        | 408        | 149        | 465       | 170        | 210        | 85         | 996       | 462        | 73         |



| d<br>(mm) | DN<br>(mm) | closest inch<br>(inch) |
|-----------|------------|------------------------|
| 110       | 100        | 4                      |
| 160       | 150        | 5                      |
| 225       | 200        | 8                      |

The technical data are not binding. They neither constitute expressly warranted characteristics nor guaranteed properties nor a guaranteed durability. They are subject to modification. Our General Terms of Sale apply.

Georg Fischer Piping Systems Ltd, Postfach, CH-8201 Schaffhausen/Switzerland

Phone +41 -(0)52-631 1111

e-mail: [info.ps@georgfischer.com](mailto:info.ps@georgfischer.com)

Internet: <http://www.gfps.com>