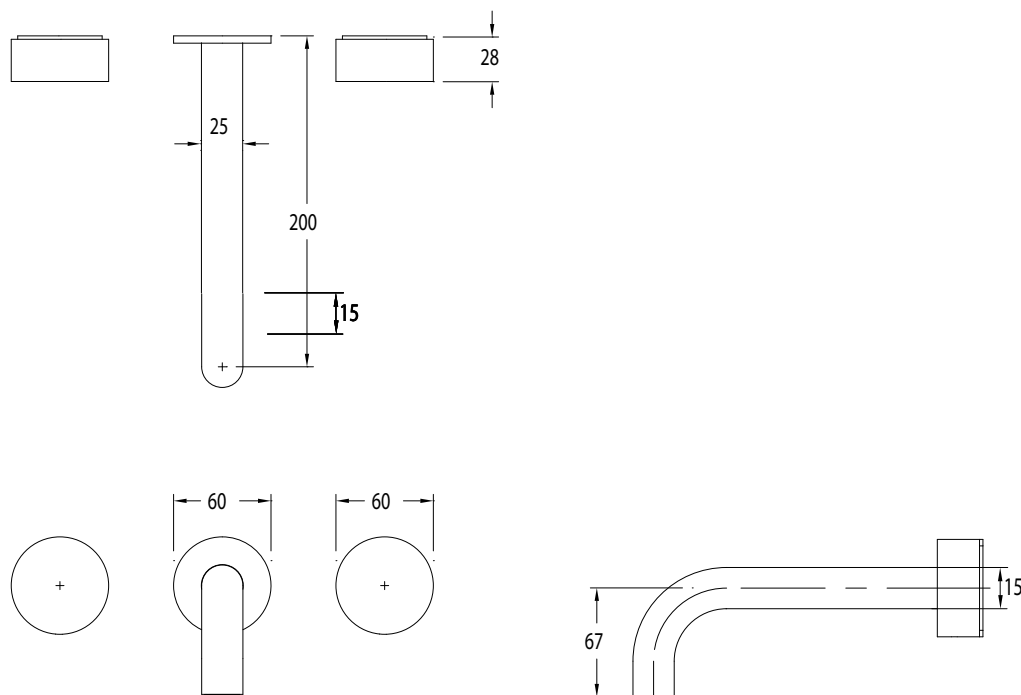


MILLI

PURE BATH SET 200MM



Dimensions are nominal measurements only.

SPECIFICATIONS

Recommended Use	Domestic, Hotel and Commercial.
Finish	Chrome, Matt Black, Rose Gold, Brushed Gunmetal.
Pressure Rating	Maximum continuous operating pressure 1000kPa. As per AS/NZS 3500 pressure must be limited to 500kPa on any new home extension or renovation. For best performance and longer life we recommend 150-500kPa Hot and cold water inlet pressure should be equal.
Temperature Rating	Max continuous working temperature 65 deg. C
Suitable Hot Water Units	Storage Tank: Yes Continuous Flow: Yes Gravity Feed: Not recommended



To see the complete MILLI range go to www.reece.com.au/bathrooms

CLEANING RECOMMENDATIONS

We recommend the use of soapy water or approved cleaners.

This product should not be cleaned with abrasive materials.

Damage caused by any improper treatment is not covered by the product warranty. Refer to Warranty Conditions.

MILLI

PURE BATH SET

INSTALLATION INSTRUCTIONS

Tapware is to be installed by a Licensed Plumber in accordance with AS/NZS 3500:2003

Recommended working water pressure 150 - 500 kPa.
Maximum water temperature is 65 deg.C.

ROUGH IN (NEW WALL BREECH)

- A standard Plumbing Wall Breech (not supplied) is to be used in conjunction with this Tapware.
- Secure a nogging 35 - 40mm back from the front of the stud. (See Fig.1)
- Attach the Wall Breech to the nogging.
- Ensure the Breech Tap Seat Bodies are square and parallel between the Wall Studs.
- To allow the Tapware to fit correctly the thickness of the finished Wall coverings must be calculated prior to "Rough in".
- The Tap Seat Body of the Breech should be 10 to 20mm back from the finished wall coverings. (See Fig.1)

USING EXISTING BREECH (CHANGING TAPWARE ONLY)

- Remove the old Spindles and clean surrounding area.
- Use a re-seating tool to dress the Seat.
- Ensure the Spindle Seat is clean, flat and free of any debris.
- Water inlet lines must be completely flushed prior to fitting the Spindles.
- The distance from the Finished Wall Surface to the top of the Tap Seat must be between 10 to 20mm (See Fig.1)
- If the Tap Seat body is not within the dimensions shown in Fig.1. Alternative Spindles may be required.

Longer Spindles can be ordered from original place of purchase.

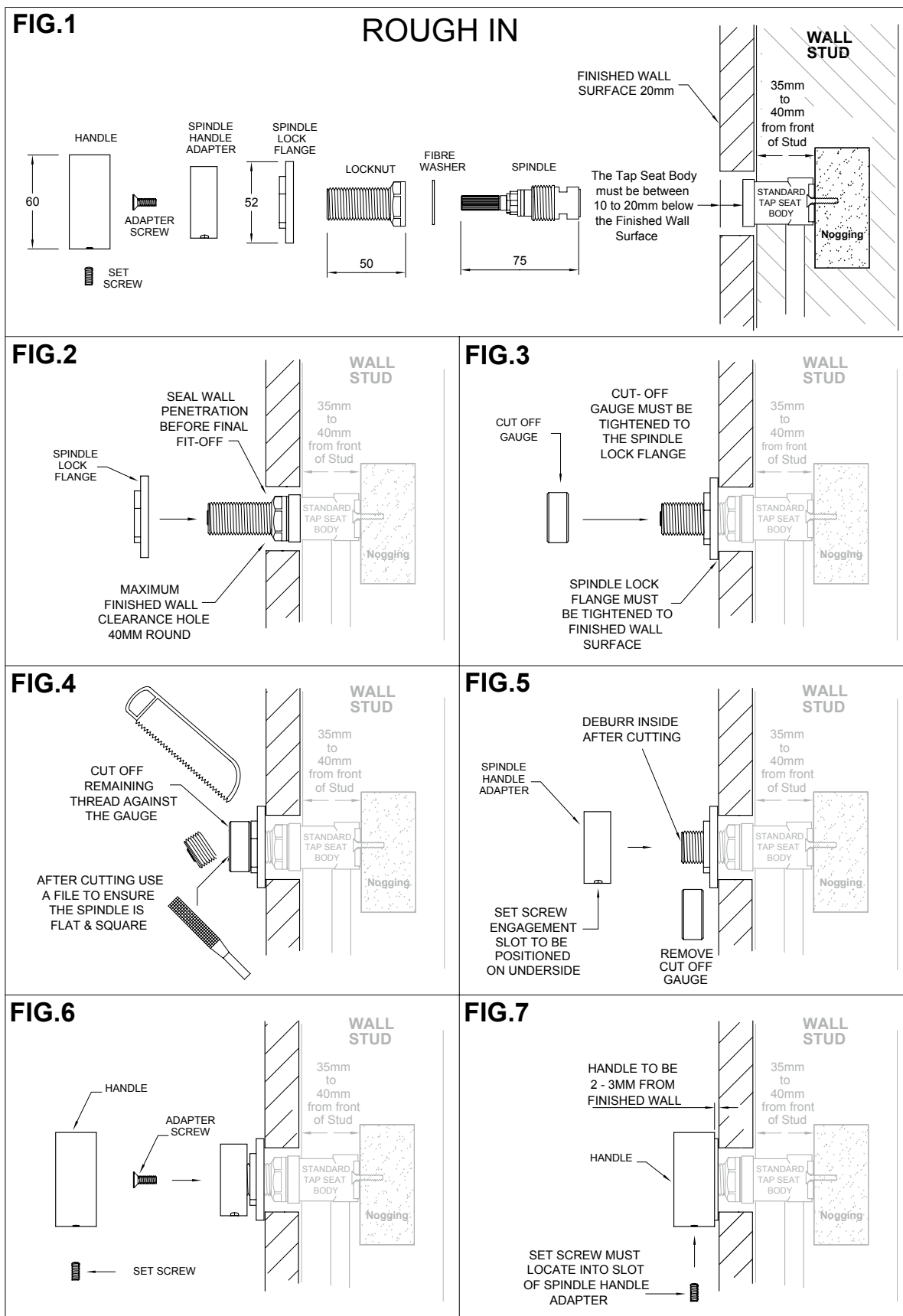
NOTE: Seat or Breech Body extensions are NOT to be used in conjunction with this Tapware.
Failure to adhere will void warranty.

FITTING OFF

- Carefully unpack the Tapware; note some parts have been combined for packaging purposes.
- Separate all parts as shown in Fig.1
- Install the Spindles hand-tight until the seal of the Spindle firmly makes contact with the seat.
- Using an appropriate spanner tighten the Spindle another 1/8th of a turn. Do not over-tighten.
- Note, over-tightening the Spindles could damage the ceramic discs and in turn, void the manufacturer's warranty.
- Place the Fibre washer over the seated Spindle and fit the Spindle Locknut. (Tighten well). (Fig.1).
- Seal the wall around the Spindle and fit the Spindle Locking Flange to meet the Finished Wall Surface. (Fig.2)
- Screw "Cut-off" Gauge to the remaining threads of the Locknut (See Fig.3)
- Using an appropriate saw, cut off the remaining thread against the "Cut-off" Gauge. (See Fig.4)
- Important, after cutting, leave the Gauge in position and use a file to ensure the Spindle end is flat and square. (See Fig.4)
- Remove the "Cut-off" Gauge and de-burr any sharp edges from the inside of the locknut. (See Fig.5)
- Attach the Spindle Handle Adapter and ensure the Set Screw Engagement Slot is positioned underside. (See Fig.5)
- Fit and tighten the Adapter Screw to secure the Spindle Handle Adapter. (See Fig.6)
- Attach Handle to Spindle Handle Adapter. (See Fig.6)
- Align the Handle so that the Set Screw locates into the Engagement Slot. (See Fig.7)
- Fine tune the Handle position and then tighten the Set Screw using a 2.5mm Allen Key. (Tighten well)
- Note the Handle should have 2-3mm clearance from the Finished Wall Surface.
- After completing the installation, establish water supply, check function of Tapware and ensure no water leaks.

MILLI PURE BATH SET

INSTALLATION INSTRUCTIONS



Plumbers, please ensure a copy of the installation instructions is left with the end user for future reference

Milli

reecer