

PLUMBERS INSTALLATION INSTRUCTIONS

Important Information

- * Not suitable for gravity feed systems.
- * Mixer is fitted with a 7.6 L/min flow regulated aerator insert.
- * Isolating stop taps are recommended to be fitted to the inlet connections. (Part No: 842018C– Mini Cistern 1/4T).
- * All pipework must be thoroughly flushed prior to installation, as foreign materials may block the flow regulating device and reduce the flow of water. Note: Aerator insert housing must be retightened to prevent removal by hand.

Installation

- 1) From fixing pack, screw stud (13) into underside of mixer body (7) and place sealing washer (11) in position.
- 2) Apply suitable lubricant to 'O' rings (12). Pass flexible tail (17) (with red indication) up through deck hole and install into hole marked 'H' in underside of mixer body (7). Pass remaining flexible tail (with blue indication) up through deck hole and install into hole marked 'C'. Tighten both tails (17) firmly by hand.
- 3) Align cutouts in sealing washer (11) (Fig.2) with flexible tails (17). Place mixer over deck hole in the desired position. Fit gasket (14) and fixing plate (15) over stud (13), screw on fixing nut (16) and tighten.
- 4) Fit outlet (8) into mixer body (7), ensuring 'O' rings are well lubricated and not damaged as they enter hole in mixer body (7). Tighten screw (9) to retain outlet using allen key (10).

- 5) Connect the flexible tails (17) to the hot and cold isolating stop taps, taking care that flexible tails are not kinked, twisted or in tension as they are tightened.

Replacing Cartridge

- 1) Turn off hot and cold water supplies at isolating stop taps.
- 2) Carefully remove plug (2). Using 2.5mm allen key loosen screw (3) and remove handle (1). Remove cap (4) taking care not to damage the decorative finish. Unscrew nut (5) then lift out old cartridge (6).
- 3) Ensure inside face of mixer body (7) is clean. Check that seal is in position in base of new cartridge (6). Fit new cartridge (6) into mixer body, taking care that two lugs on base of cartridge (6) fit into mating holes in mixer body (7).
- 4) Screw on nut (5). **Important:**–Nut (5) should be tightened to a torque of 10 Nm.
- 5) Replace cap (4), tightening by hand. Fit handle (1) taking care that it is pushed fully down, tighten screw (3) and replace plug (2).
- 6) Turn on isolating stop taps and check operation.

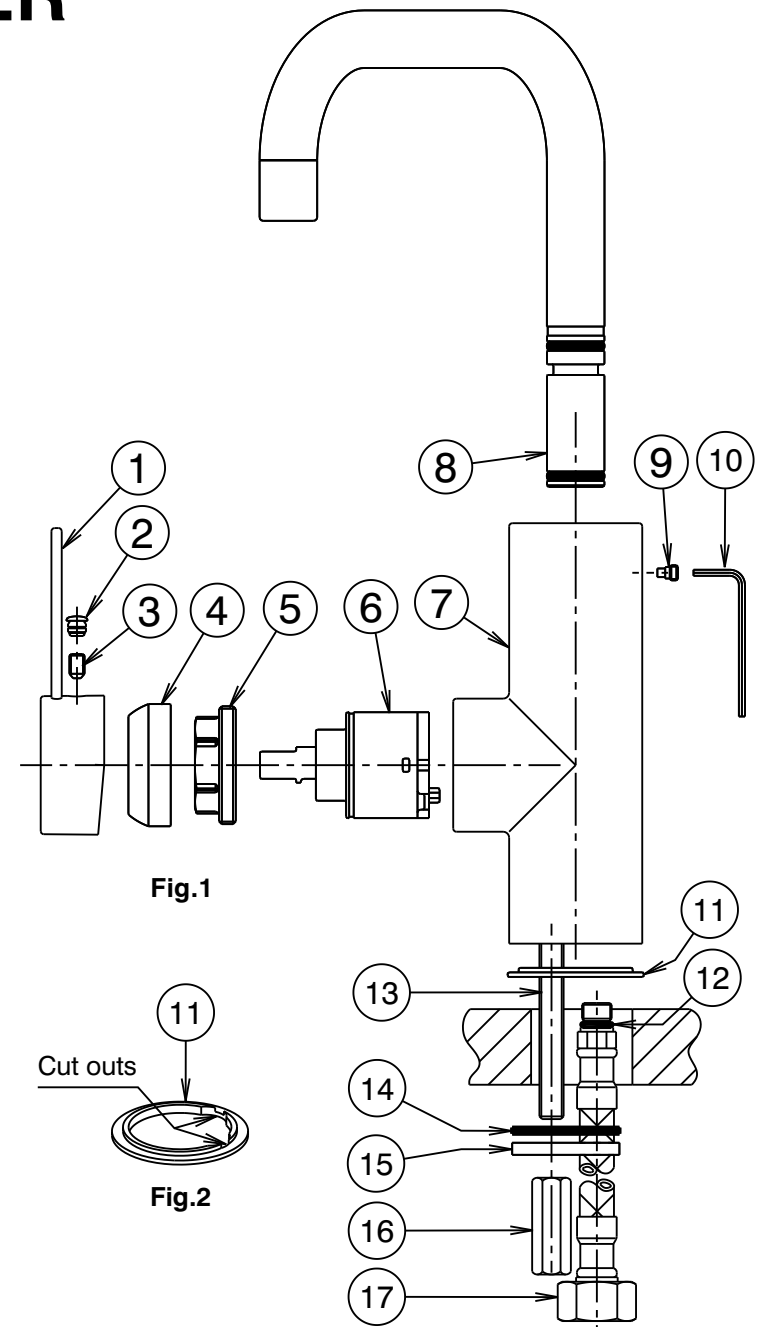


Fig.1

Fig.2

IMPORTANT
<u>Pressure & Temperature Requirements.</u>
<ul style="list-style-type: none"> • Hot and cold water inlet pressures should be equal. • Inlet pressure range : 150–1000 kPa <p>New Regulation:– 500 kPa maximum operating pressure at any outlet within a building. (Ref. AS/NZS 3500.1 –2003, Clause 3.3.4)</p> <ul style="list-style-type: none"> • Maximum hot water temperature : 80°C.
<u>Deck Requirements</u>
<ul style="list-style-type: none"> • Deck thickness : 45mm maximum • Tap body hole (in deck) : Ø34–36mm