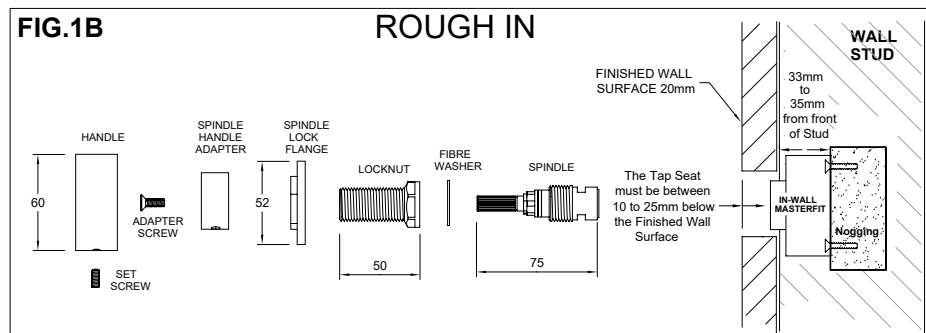
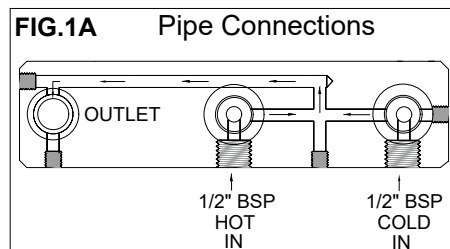
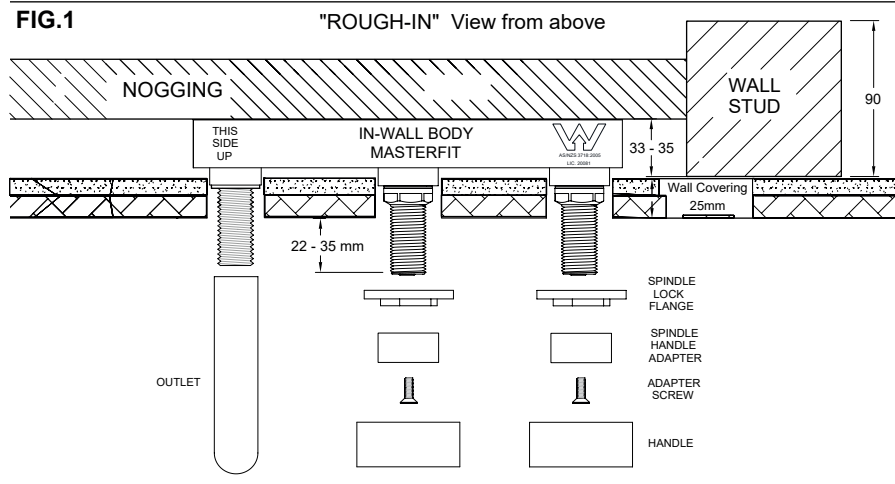


Pure Elemental Wall Basin/Bath Hostess System

SUSSEX



Product codes:

MPBHS160-E PURE WALL BATH HOSTESS SYS 160 ELEMENTAL
 MPBHS200-E PURE WALL BATH HOSTESS SYS 200 ELEMENTAL
 MPBHS250-E PURE WALL BATH HOSTESS SYS 250 ELEMENTAL

MPWBHS160.01 PURE WALL BASIN HOSTESS SYS 160 ELEMENTAL
 MPWBHS200.01 PURE WALL BASIN HOSTESS SYS 200 ELEMENTAL
 MPWBHS250.01 PURE WALL BASIN HOSTESS SYS 250 ELEMENTAL

Plumbers note:

Tapware is to be installed by a Licensed Plumber in accordance with AS/NZS 3500:2021
 Recommended working water pressure 300 - 500 Kpa. Maximum water temperature is 65°C
 Please ensure a copy of the Installation Instructions are left with the end user for future reference.

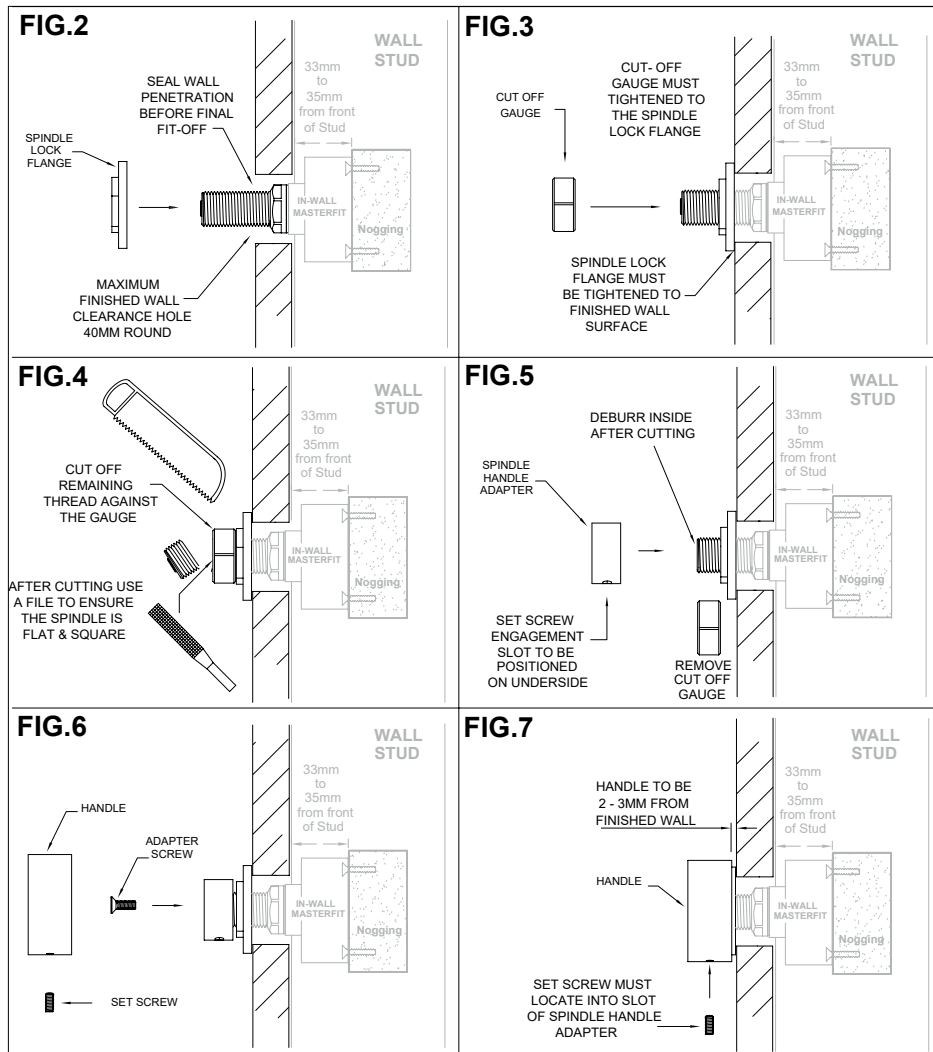
Rough In (MASTERFIT):

- Prepare a nogging and secure 33 - 35mm back from the front of the stud. (See Fig.1)
- The Masterfit (In-Wall) will be marked "This Side Up" to indicate orientation.
- Using the screws (x4) provided, mount the Masterfit (In-Wall) to the Nogging.
- Ensure the Masterfit is level and square to the Wall Studs.

Pipe Connections:

- The Masterfit is supplied with coloured thread Caps to protect and identify the Hot and Cold inlet connections.
- All lines must be free from any dirt and debris before connecting to the Masterfit. Flush all water feed lines.
- Connect Hot and Cold lines to the corresponding 1/2" BSP ports of the Masterfit. (See Fig.1A)
- Do not remove or disturb any factory fitted Pressure Plugs or Fixings.
- Once all water connections are made, use the "Spindle Handle Adapter" and check Hot/Cold water operation.
- Check all fittings and connections for leaks.
- Store the Dress Kit in a safe place until required for Fit off.





Fit Off:

- Prior to installing Dress kit, ensure 22 - 35mm of the Spindle and locknut protrude past the finished Wall surface. (See Fig.1)
- If 22 - 35mm is not maintained then contact the manufacturer for possible options.
- Seal the wall around the Spindle and fit the Spindle Locking Flange to meet the Finished Wall Surface. (Fig.2)
- Screw "Cut-off" Gauge to the remaining threads of the Locknut. (See Fig.3)
- Using an appropriate saw, cut off the remaining thread against the "Cut-off" Gauge. (See Fig.4)
- **Important:** After cutting leave the Gauge in position and use a file to ensure the Spindle end is flat and square. (See Fig.4)
- Remove the "Cut-off" Gauge and de-burr any sharp edges from the inside of the locknut. (See Fig.5)
- Attach the Spindle Handle Adapter and ensure the Set screw engagement slot is positioned to the underside. (See Fig.5)
- Fit and tighten the Adapter Screw to secure the Spindle handle Adapter. (See Fig.6)
- Attach Handle to Spindle Handle Adapter. (See Fig.6)
- Align the Handle so that the Set screw locates into the engagement slot. (See Fig.7)
- Fine tune the Handle position and then tighten the Set Screw using a 2.5mm Allen Key. (Tighten well)
- Note the Handle should have 2 - 3mm clearance from the Finished Wall Surface.
- After completing the installation, establish water supply, check function of Tapware and ensure no water leaks.