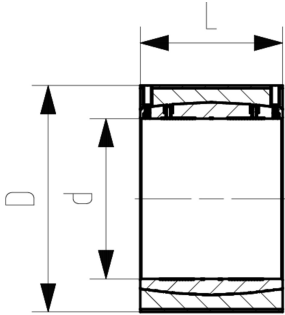


COOL-FIT 4.0 Coupler, d250-d450

Model:

- Pre-insulated PE100 SDR 17 metric
- Insulation made from GF HE foam
- Outer jacket impact resistant. Color: black

d/D (mm)	PN (bar)	Code	Weight (kg)	L (mm)	closest inch (inch)
250/355	10	738 911 821	6.290	247	10
280/400	10	738 911 822	8.020	252	10
315/450	10	738 911 823	9.110	267	12
355/500	10	738 911 824	13.780	290	14
400/560	10	738 911 875	23.450	294	16
450/630	10	738 911 876	22.590	326	18



The technical data are not binding. They neither constitute expressly warranted characteristics nor guaranteed properties nor a guaranteed durability. They are subject to modification. Our General Terms of Sale apply.

Georg Fischer Piping Systems Ltd, Postfach, CH-8201 Schaffhausen/Switzerland

Phone +41 -(0)52-631 1111

e-mail: info.ps@georgfischer.com

Internet: <http://www.gfps.com>