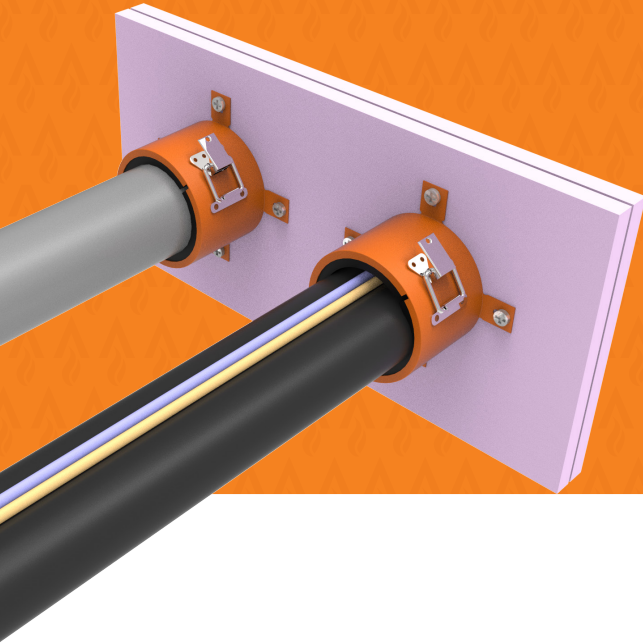


FyreCHOKE

Premium Hinged Retrofit Collars



Trafalgar Fire FyreCHOKE Premium Hinged Retrofit Collars are designed to provide maximum protection against the spread of fire through walls and floors that are penetrated by plastic conduits, plastic pipes or air-conditioning service bundles. FyreCHOKE Collars are simple to install, simply retro-fit around the service and fix to the wall or floor.



Click to Watch
Installation Video



KEY FEATURES



- Intumescent fire stopping for plastic pipes, conduits and air-conditioning bundle penetrations.
- Actively expands during fire conditions, forms a tight seal and prevents the spread of fire through the service penetration.
- Fire tested in a range of wall and floor systems and a wide variety of service types.
- Solid hinge and clasp with durable powder coated finish.
- Simple design allows for quick and easy installation of the collars.
- Sizes from 50-150mm

APPLICATIONS



Electricians

Data NBN Conduits
Electrical Conduits

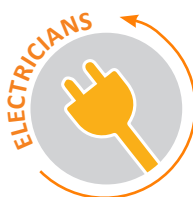
Plumbers

HDPE pipes
PVC pipes
PEX pipes
PEX-AL-PEX pipes

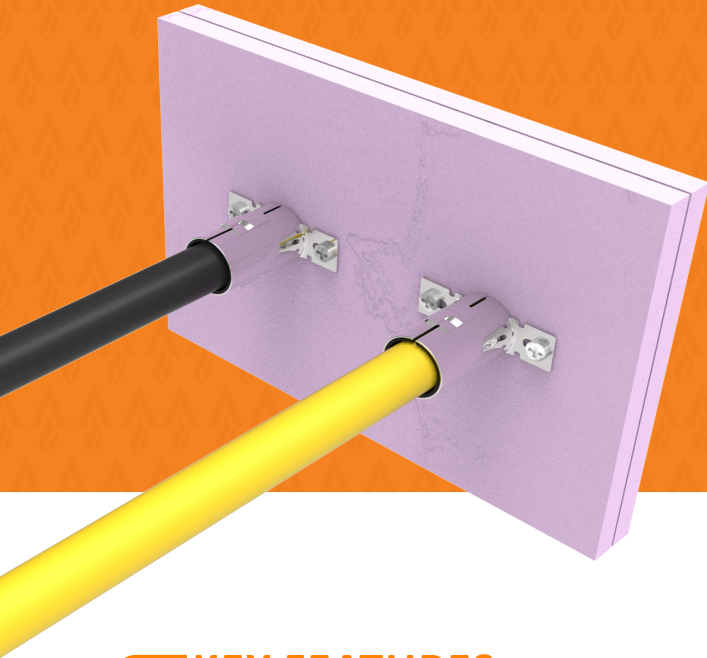
HVAC&R

HVAC bundle
Insulated pipes & cables

TRADES



FyreCHOKE Conduit Collars



Trafalgar Fire FyreCHOKE Conduit Collars are designed to provide maximum protection against the spread of fire through walls and floors that are penetrated by plastic conduits, plastic pipes. FyreCHOKE Collars are simple to install, simply retro-fit around the service and fix to the wall or floor.



Click to Watch
Installation Video



KEY FEATURES



- Intumescent fire stopping specifically for plastic pipes and conduit penetrations.
- Actively expands during fire conditions, forms a tight seal and prevents the spread of fire through the service penetration.
- Fire tested in a range of wall and floor systems including a wide variety of service types.
- Stainless steel construction
- Simple design allows for quick and easy installation of the collars.
- Sizes 25-40mm

APPLICATIONS



Electricians

Data NBN Conduits
Electrical Conduits

Plumbers

PVC pipes
PEX pipes
PEX-AL-PEX pipes

TRADES

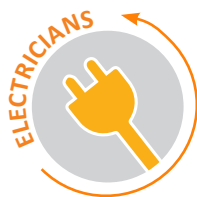


Table of Contents



| Section | | Trade | Page |
|-----------------------|---------------------------------|-------|------|
| Benefits | | | 4 |
| System Selector | | | 5 |
| Fire Resistance Level | | | 6 |
| FRL Tables | PVC Pipes | | 7 |
| | PEX & PEX-AL-PEX Pipes | | 8 |
| | PVC Conduits Electrical & Data | | 9 |
| | Pair Coil Bundles | | 10 |
| Installation Manual | Annular Gaps | | 11 |
| | FyreCHOKE Collars - All Walls | | 12 |
| | FyreCHOKE Collars - Walls Types | | 13 |
| What is TWRAP™? | | | 14 |
| System Range | | | 15 |
| Compliance | | | 16 |
| FAQ | | | 17 |
| Technical Drawings | Walls Installations | | 18 |
| | Floors Installations | | 19 |
| | FyreBOARD Maxilite™ | | 20 |

FyreCHOKE Collars

What are FyreCHOKE Collars?

Trafalgar Fire’s Collar range includes the FyreCHOKE Conduit Fire Collar and the larger FyreCHOKE Premium Hinged Retrofit Fire Collar. They utilise a simple lock mechanism to secure around a service before being fastened to the wall or floor using integrated fixing tabs at the base of the collar.

FyreCHOKE fire collars have been extensively tested and approved to AS1530.4-2014 & AS4072.1 in accordance with the National Construction Code, and are suitable for use under NCC2022 test requirements.

The FyreCHOKE Conduit Collar features the innovative two-piece ‘slide-lock joint’ mechanism, and are ideal for use in tight, difficult to reach locations. Their stainless-steel casing is supplied standard and is ideal for use in aggressive environments.

The FyreCHOKE Premium Hinged Retrofit Collar has a high-quality powder-coated finish and is ideal for applications where aesthetics of the system is important and easy identification is paramount.

Applications

FyreCHOKE Conduit Collars (25-40mm)

- PVC conduits including NBN or other fibre conduits.
- PVC conduits with residential (TPS) and three-phase (three core and Earth) power cables.
- PVC drain lines.
- PEX and PEX-AL-PEX pipes.

FyreCHOKE Premium Hinged Retrofit (50-150mm)

- PVC, PP-R and HDPE stack pipes (DWV) in floors.
- PVC stack pipes with elbow sockets in floors.
- PVC stack pipes (DWV) in walls.
- HVAC & R service bundles with multiple sets of pair coil and their associated cables through walls and floors.

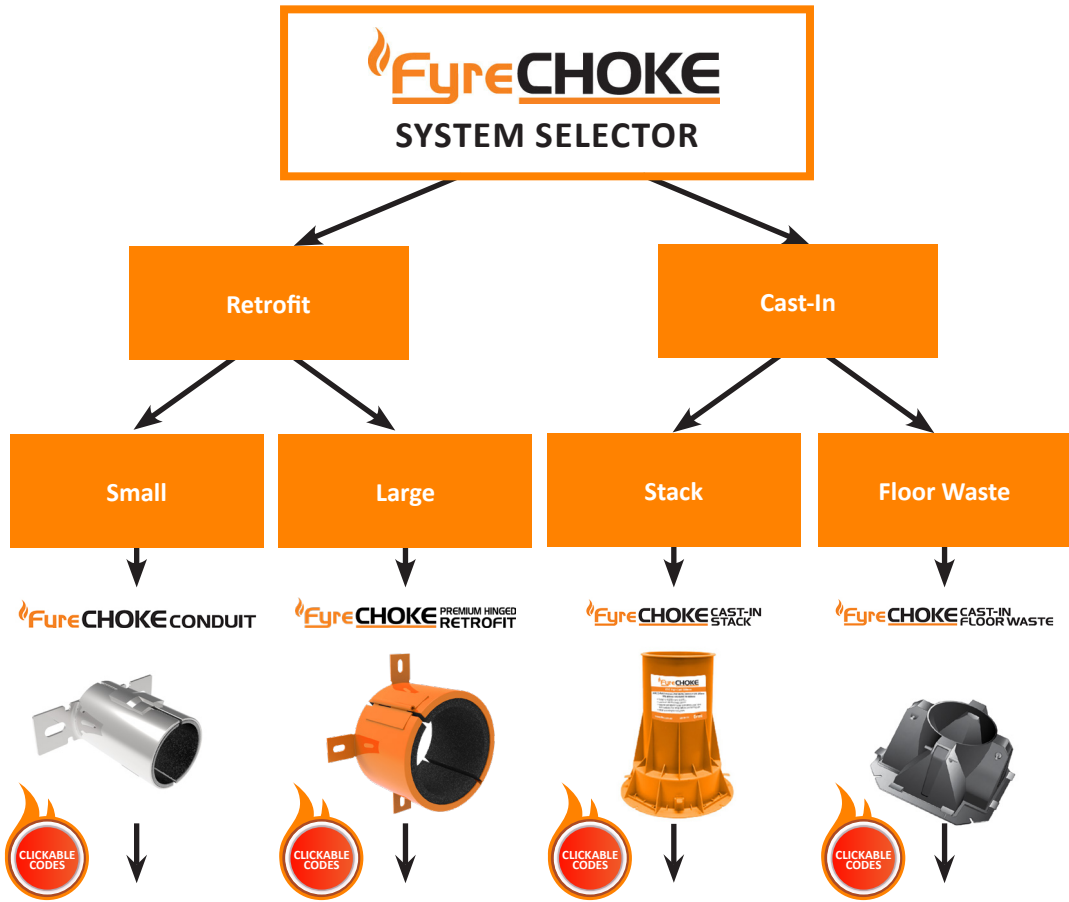
Not suitable for Floor Waste applications. Contact Trafalgar Fire for more details.

FyreCHOKE CONDUIT



FyreCHOKE PREMIUM HINGED RETROFIT





| | | Small | Large | Stack | Floor Waste |
|--------------|---|-------|----------|-------|-------------|
| Fire Barrier | Installation Prior to Fire Barrier Construction | x | x | ✓ | ✓ |
| | Concrete Slab | ✓ | ✓ | ✓ | ✓ |
| | FyreSET Mortar | x | x | x | x |
| | Masonry Walls | ✓ | ✓ | x | x |
| | Concrete Walls | ✓ | ✓ | x | x |
| | Plasterboard | ✓ | ✓ | x | x |
| | Hebel | ✓ | ✓ | x | x |
| | Walsc | ✓ | ✓ | x | x |
| | SpeedPanel | ✓ | ✓ | x | x |
| | FyreBOARD Maxilite™ | ✓ | ✓ | x | x |
| Services | PVC Conduits | ✓ | ✓ 50mm | x | x |
| | Insulated Metal Pipes | x | ✓ | x | x |
| | PVC Pipes | ✓ | ✓ | ✓ | ✓ |
| | HDPE | x | ✓ Floors | ✓ | ✓ 50mm |
| | PEX | ✓ | x | x | x |
| | PEX-AL-PEX | ✓ | x | x | x |

For full FRL details please consult the relevant technical guide or contact Trafalgar Fire. Fire testing of Trafalgar Fire products is always ongoing.

FyreCHOKE

Conduit and Premium Hinged Retrofit

Fire Rating – How is fire performance measured?

An FRL (fire resistance level) is a handy way of summarising the performance of a building element. It consists of 3 numbers, all given in minutes:

FRL 240/240/240

(example)



Structural Adequacy

The ability of the building element to support the weight of adjacent building elements.

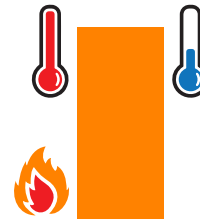
ie: a brick wall supporting a concrete floor slab above.



Integrity

The ability of an element to prevent the passage of flames and hot gasses.

ie: a plasterboard wall remaining intact and not allowing holes to form.



Insulation

The ability of an element to resist heat transfer from the exposed face to the unexposed face.

ie: a bundle of cables remaining below a set temperature limit on the unexposed side of the wall penetration system.

Penetrations are not required to have a Structural Adequacy rating and is usually expressed as a dash. For example, a penetration through a 4-hour load bearing wall would be written as -/240/240.

Integrity

The FyreCHOKE Collar system will achieve the integrity performance for up to 4 hours physically stopping the direct spread of fire, however the insulation performance of the penetration will be limited to the type of wall being used and conductivity of the services in the penetration.

Insulation (Temperature Rise)

Heat transfer via conduction (or heat rise) will occur through the conductive parts of any penetration system. To limit the heat rise through the FyreCHOKE Collar penetration systems, our 25mm thick TWRAP foil encased blanket can be wrapped around the services to achieve up to 2 hours of insulation performance. There are some applications that won't require any TWRAP to achieve the full FRL, please refer to the tables below for specific details.

FRL Approvals Tables

PVC Pipes



**Plasterboard, AAC/Hebel Walls
Speedpanel, Concrete/Masonry Walls
Concrete Floors**



FRL TABLES - PVC Pipes

| PVC Pipe Size | Collar Size | Plasterboard (64mm stud) | | | AAC Walls/ Hebel | Speedpanel** | Concrete/ Masonry Walls | Concrete Floors | |
|---------------|-------------|--------------------------|---------|--------------|------------------|--------------|-------------------------|-----------------|-----------|
| | | Single Layer | | Double Layer | | | | Thickness | |
| | | 13mm | 16mm | 13mm | | | | 75mm | 78mm |
| 16 | 25mm | -/60/60 | -/90/90 | -/120/120 | -/120/120 | -/120/120 | -/120/120 | -/120/120 | -/240/240 |
| 20 | | -/60/60 | -/90/90 | -/120/120 | -/120/120 | -/120/120 | -/120/120 | -/120/120 | -/240/240 |
| 25 | | -/60/60 | -/90/90 | -/120/120 | -/120/120 | -/120/120 | -/120/120 | -/120/120 | -/240/240 |
| 32 | 32mm | -/60/60 | -/90/90 | -/120/120 | -/120/120 | -/120/120 | -/120/120 | -/120/120 | -/240/240 |
| 40 | 40mm | -/60/60 | -/90/90 | -/120/120 | -/120/120 | -/120/120 | -/120/120 | -/120/120 | -/240/240 |
| 50 | 50mm | -/60/60 | -/90/90 | -/120/120 | -/120/120 | -/120/120 | -/120/120 | -/120/120 | -/240/240 |
| 65 | 65mm | -/60/60 | -/90/90 | -/120/120 | -/120/120 | -/120/120 | -/120/120 | -/120/120 | -/240/240 |
| 80 | 80mm | -/60/60 | -/90/90 | -/120/120 | -/120/120 | -/120/120 | -/120/120 | -/120/120 | -/240/240 |
| 100 | 100mm | -/60/60 | -/90/90 | -/120/120 | -/120/120 | -/120/120 | -/120/120 | -/120/120 | -/240/240 |
| 100 (Socket) | 130mm | - | - | - | - | - | - | -/120/120 | -/240/240 |
| 150 | 150mm | - | - | - | - | - | - | -/120/120 | -/240/240 |

*Also suitable for HDPE pipes up to -/240/240 up to 100mm in size.

** Additional thickening required, see page 13.

FyreCHOKE Collars are also suitable for use with FyreBOARD Maxilite™, if the opening is too large and needs to be closed.

Applications Range (DWV)

In accordance with Australian Standards, tested pipes are approved for drain, waste and vent applications such as toilets, sinks and showers. Tested pipes are not suitable for floor waste pipes, contact Trafalgar Fire for assistance with this if required.

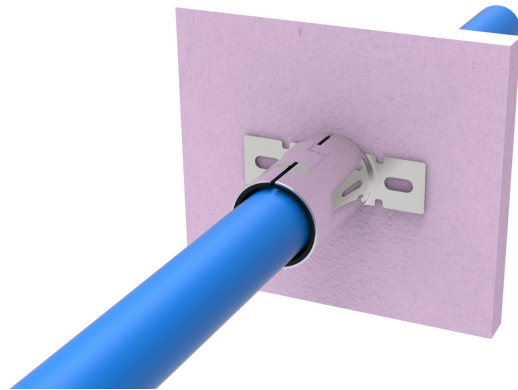


FRL Approvals Tables

PEX & PEX-AL-PEX Pipes



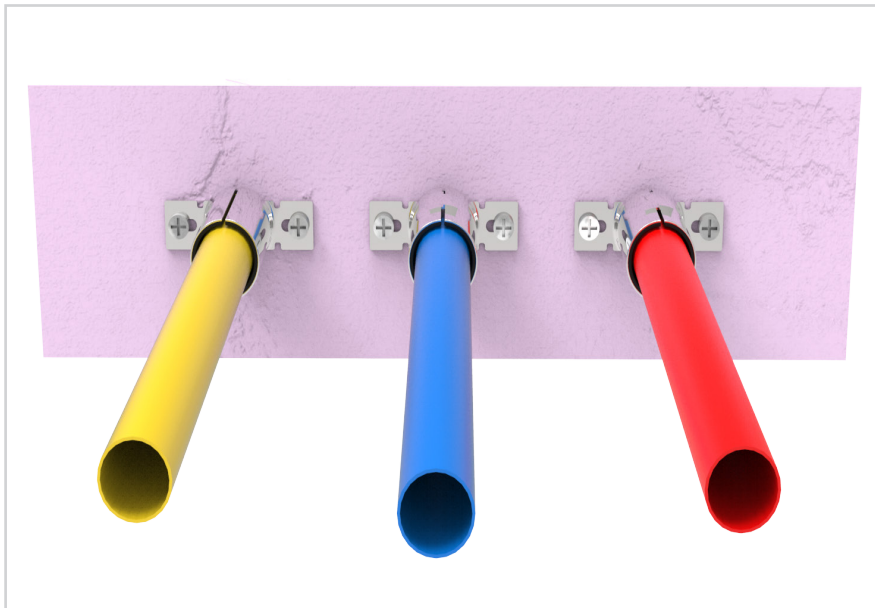
Plasterboard, AAC/Hebel Walls
Speedpanel, Concrete/Masonry Walls
Concrete Floors



| Pipe Type | Pipe Size | Collar Size | Plasterboard (64mm stud) | | | AAC Walls/ Hebel | Speedpanel | Concrete/ Masonry Walls | Concrete Floors |
|------------|-----------|-------------|--------------------------|---------|-------------|---------------------|------------|-------------------------------|--------------------|
| | | | Single Layer | | DoubleLayer | | | | |
| | | | 13mm | 16mm | 13mm | | | | 75mm |
| PEX-A | 25mm | 25mm | -/60/60 | -/90/90 | -/120/120 | -/120/120 | -/120/120 | -/120/120 | -/120/120 |
| PEX-B | 25mm | | -/60/60 | -/90/90 | -/120/120 | -/120/120 | -/120/120 | -/120/120 | -/120/120 |
| PEX-AL-PEX | 25mm | | -/60/60 | -/90/90 | -/120/120 | -/120/120 | -/120/120 | -/120/120 | -/120/120 |

FRL TABLES - PEX & PEX-AL-PEX Pipes

FyreCHOKE Conduit Collars are also suitable for use with FyreBOARD Maxilite™, and FyreBATT penetration systems, ideal for closing oversized openings.



FyreCHOKE Collars may be installed on penetrations as close as 40mm apart.

FRL Approvals Tables

PVC Conduits Electrical & Data



**Plasterboard, AAC/Hebel Walls
Speedpanel, Concrete/Masonry Walls
Concrete Floors**



FRL TABLES - PVC Conduits Electrical & Data

| Conduit Size | Collar Size | Plasterboard (64mm stud) | | | AAC Walls/ Hebel | Speedpanel* | Concrete/ Masonry Walls | Concrete Floors |
|--------------|-------------|--------------------------|---------|--------------|---------------------|-------------|-------------------------------|-----------------|
| | | Single Layer | | Double Layer | | | | Thickness |
| | | 13mm | 16mm | 13mm | 75mm | 78mm | 120mm | |
| 20 | 25mm | -/60/60 | -/90/90 | -/120/120 | -/120/120 | -/120/120 | -/120/120 | -/120/120 |
| 25 | | -/60/60 | -/90/90 | -/120/120 | -/120/120 | -/120/120 | -/120/120 | -/120/120 |
| 32 | 32mm | -/60/60 | -/90/90 | -/120/120 | -/120/120 | -/120/120 | -/120/120 | -/120/120 |
| 40 | 40mm | -/60/60 | -/90/90 | -/120/120 | -/120/120 | -/120/120 | -/120/120 | -/120/120 |
| 50 | 50mm | -/60/60 | -/90/90 | -/120/120 | -/120/120 | -/120/120 | -/120/120 | -/120/120 |

* Additional thickening required, see page 13.

The conduits may contain any combination of the following up to the maximum that can be accommodated inside of the PVC conduit:

- 2C & E 2.5mm² TPS cable.
- CAT5/CAT6 data cables.
- 3C & E PVC sheathed power cables up to 19 mm diameter.
- Fibre optic cables including NBN.

The FyreCHOKE Collars are also suitable for PVC Conduits that have been cast into concrete floor slabs (minimum thickness 120mm) so long as the service penetrations remain 50mm apart. Refer to diagram at top of the page.

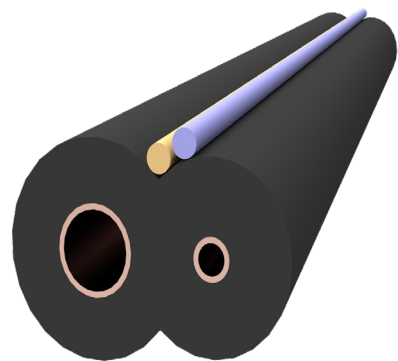


FRL Approvals Tables

Pair Coil Bundles



Plasterboard, AAC/Hebel Walls, Walsc, Speedpanel, Concrete/Masonry Walls, Concrete Floors



FRL TABLES - Pair Coil Bundles

| No. of Pair Coil | Collar Size | Plasterboard (64mm stud) | | | AAC Walls/ Hebel | Speedpanel** | Concrete/ Masonry Walls | Concrete Floors | |
|------------------|-------------|--------------------------|---------|--------------|------------------|--------------|-------------------------|-----------------|--|
| | | Single Layer | | Double Layer | | | | Thickness | |
| | | 13mm | 16mm | 13mm | 75mm | 78mm | 120mm | 150mm | |
| 1x | 50mm | -/60/60 | -/90/90 | -/120/120 | -/120/120 | -/120/120 | -/120/120 | -/120/120* | |
| 1x | 65mm | -/60/60 | -/90/90 | -/120/120 | -/120/120 | -/120/120 | -/120/120 | -/120/120* | |
| 2x | 80mm | -/60/60 | -/90/90 | -/120/120 | -/120/120 | -/120/120 | -/120/120 | -/120/120* | |
| 3x | 100mm | -/60/60 | -/90/90 | -/120/120 | -/120/120 | -/120/120 | -/120/120 | -/120/120 | |

*TWRAP not required in floor slabs 150mm or thicker.
 ** Additional thickening required, see page 13.

Pair coil bundles require TWRAP applied for 300mm, each side of the wall.

For example: 2x sets of FR pair coil can be run through an 80mm FyreCHOKE collar along with 2x power cables, and 2x data cables.

To achieve the full insulation performance (i.e. -/120/120) the pair coil bundles will need to be wrapped with TWRAP for 300mm on both sides of the barrier, with the exception of 150mm thick concrete floors.

FyreCHOKE collar penetrations maybe installed as close as 40 mm apart.



INSTALLATION

Annular Gap Requirements

HOLE SIZES

What is an Annular Gap?

The annular gap is the clearance between the pipe and the hole as illustrated in this image by the orange bar. Annular gaps should be limited to a maximum of 7.5mm, as shown below.

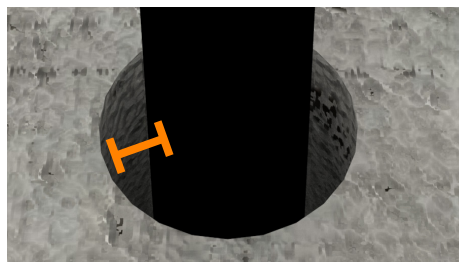


TABLE 1: FyreCHOKE Conduit Collars

| Product Code | Collar Size | Max Hole Size |
|-----------------|-------------|---------------|
| FyreCHOKE-CC-25 | 25mm | 40mm |
| FyreCHOKE-CC-32 | 32mm | 47mm |
| FyreCHOKE-CC-40 | 40mm | 55mm |

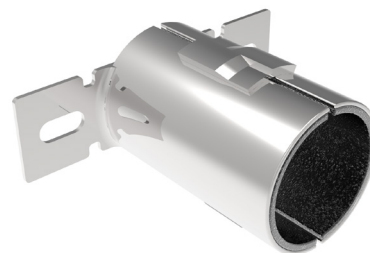
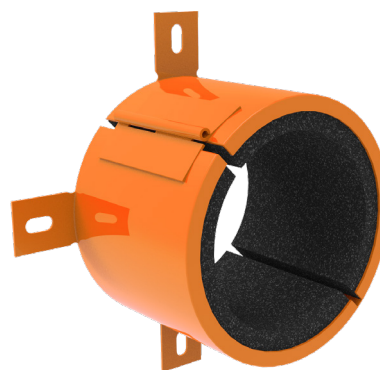


TABLE 2: FyreCHOKE Retrofit Collars

| Product Code | Collar Size | Max Hole Size |
|--------------------|-------------|---------------|
| FyreCHOKE-PHRC-50 | 50mm | 65mm |
| FyreCHOKE-PHRC-65 | 65mm | 80mm |
| FyreCHOKE-PHRC-80 | 80mm | 95mm |
| FyreCHOKE-PHRC-100 | 100mm | 115mm |
| FyreCHOKE-PHRC-130 | 130mm | 145mm |
| FyreCHOKE-PHRC-150 | 150mm | 165mm |



Note: This table references a maximum annular gap of 7.5mm between the service and the hole in the separating barrier. Annular gaps are to be sealed with FyreFLEX® Sealant.

INSTALLATION

FyreCHOKE Collars in Walls

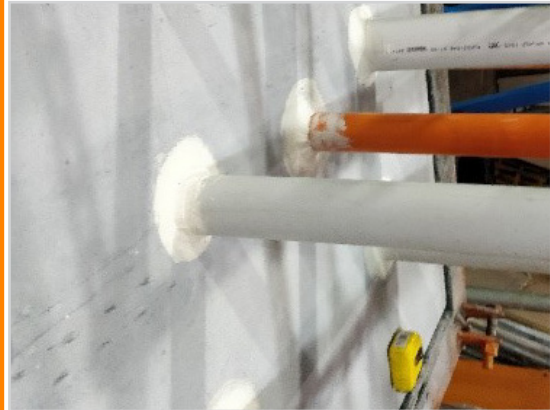
ALL WALLS

CUT HOLE



Ensure that the opening in the wall/floor is within the approved size range (no more than 7.5mm annular gap as per the table on page 11). Ensure the surface is clean for the installation of FyreFLEX® Sealant.

SEAL



Fill the annular gap between the service and wall with FyreFLEX® Sealant for a depth of 10mm, on both sides of a wall or top and bottom of a floor.

FyreFLEX® Sealant between the hole and services can be applied flush with the wall without a fillet. Check the table on page 11 for the appropriate hole size for each collar.

FIT



For the FyreCHOKE Conduit Collar, separate the two halves, fit them on either side of the service before sliding the halves back together.

For the FyreCHOKE Premium Hinged Retrofit Collar, undo the latch to open the collar, secure it around the service/s, and re-secure the latch.

FIX



Use appropriate fixings as per page 13 to secure the collar to the wall/floor using all of the available the fixing tabs.

Click to Watch Installation Video



INSTALLATION FyreCHOKE Collars in Walls

ALL WALLS

THICKEN (SPEEDPANEL WALLS ONLY)



Speedpanel walls require a 60mm thick piece of FyreBOARD Maxilite™ to be screw fixed onto one side of the penetration, before attaching the collar. See table below for screw fixings. Seal all gaps and perimeter with FyreFLEX® Sealant.

BACKFILL



Where annular gaps exist between the services and the collar, back-fill these FyreFLEX® Sealant to the full depth of the collar.

Collars are installed to the bottom side of a floor only, or to both sides of a wall.

TABLE 3: FyreCHOKE Collars Fixings

| Type | Fixing | |
|--------|---------------------------|--|
| Walls | Single Layer Plasterboard | 8gx50mm plasterboard screws |
| | Double Layer Plasterboard | |
| | FyreBOARD Maxilite™ | |
| | AAC Wall/ Hebel 75mm | 6g x 25mm screws |
| | Speedpanel 78mm | Side 1 into bare Speedpanel - HEX head metal screws 12-14 x 20mm Side 2 FyreBOARD Maxilite™ into Speedpanel - 10g x 100mm plasterboard screws in each corner Side 2 Collar into FyreBOARD Maxilite™ - 6 x 25mm screws |
| Floors | Concrete/Masonry | M6 x 50mm masonry anchors |

Click to Watch Installation Video



What is TWRAP?

TWRAP™ is a 25mm thick foil-faced, insulation wrap that has been engineered to provide insulation performance on service penetrations as required by the National Construction Code (NCC) in modern construction and has been tested specifically with some FyreCHOKE systems to AS1530.4-2014.

TWRAP™ is not required for plastic pipe penetration systems however some air-conditioning bundles will require TWRAP™ to achieve the full insulation performance of the penetration (as per page 10).

TWRAP's aluminium foil, fiberglass-reinforced outer layer completely encapsulates the core and provides additional handling strength, protection from tearing and provides a high resistance to mould growth.

If required, TWRAP™ is wrapped around the services for the distance specified in the approval's tables. The TWRAP is to overlap itself by 50mm around the services at any joins, and is to be fixed with steel cable ties 50mm from each end and at 150mm centres between (or foil tape).

TWRAP



FyreCHOKE Conduit Collars

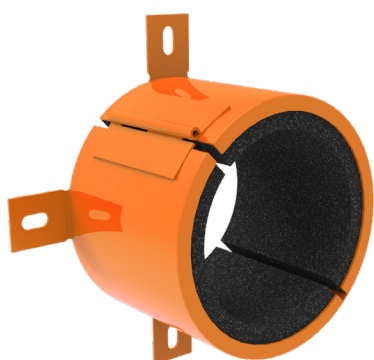


FyreCHOKE CONDUIT



| Item Number | Collar Size | To Suit Nominal Service Size | Inner Diameter | Outer Diameter | Height | Min Order Qty |
|-----------------|-------------|------------------------------|----------------|----------------|--------|---------------|
| FyreCHOKE-CC-25 | 25mm | 25mm | 26mm | 36mm | 50mm | 1 |
| FyreCHOKE-CC-32 | 32mm | 32mm | 33mm | 44mm | 50mm | 1 |
| FyreCHOKE-CC-40 | 40mm | 40mm | 43mm | 48mm | 50mm | 1 |

FyreCHOKE Premium Hinged Retrofit Collars



FyreCHOKE PREMIUM HINGED RETROFIT



| Item Number | Collar Size | To Suit Nominal Service Size | Inner Diameter | Outer Diameter | Height | Min Order Qty |
|--------------------|-------------|------------------------------|----------------|----------------|--------|---------------|
| FyreCHOKE-PHRC-50 | 50mm | 50mm | 58mm | 72mm | 62mm | 1 |
| FyreCHOKE-PHRC-65 | 65mm | 65mm | 72mm | 90mm | 62mm | 1 |
| FyreCHOKE-PHRC-80 | 80mm | 80mm | 85mm | 102mm | 62mm | 1 |
| FyreCHOKE-PHRC-100 | 100mm | 100mm | 115mm | 133mm | 62mm | 1 |
| FyreCHOKE-PHRC-130 | 130mm | 100mm Elbow/socket | 130mm | 155mm | 62mm | 1 |
| FyreCHOKE-PHRC-150 | 150mm | 150mm | 160mm | 200mm | 62mm | 1 |

FyreCHOKE COLLARS



Compliance with the National Construction Code (NCC)

Formerly known as BCA

Under the building code, a Deemed to Satisfy (DTS) solution is one that satisfies the performance requirements set out in section C of volume one. Section C specifically deals with the fire protection of openings in fire barriers (i.e. service penetrations in fire rated walls and floors).

Section C3.15 – Openings for Service Installations

Where any service penetrates a fire barrier that has a Fire Resistance Level (FRL) with respect to integrity and insulation, the installation should comply with:

A Fire Tested System – An identical prototype, installed in the same wall or floor system that has been tested/ approved to the fire testing standard AS1530.4 and AS4072.1 which has achieved an FRL of equal to or greater than that required by the fire barrier.

For example, if the site has a -/120/120 plasterboard wall system with an electrical conduit penetration, the product used to seal the cables must have been fire tested at an approved laboratory WITH the conduit filled with electrical cables IN the same wall type AND tested for at least 120 minutes without failing the integrity or insulation criteria.

Compliance will only be achieved when the installation on site mirrors the tested system.

Test and Assessment Reports

Fire testing is a timely and expensive process, and it is impossible to test every single possible service configuration ‘identically’ in a practical sense. Under the building code C3.15(a)(i)(B) a testing authority is permitted to write a formal assessment confirming the likely fire performance (FRL) of the penetration. The guidelines for what can and can’t be included in a formal assessment are outlined in AS4072.1.

The most recent FyreCHOKE assessment report is FC11190 which was written by expert Fire Engineers from a NATA approved laboratory in accordance with AS1530.4-2014, and provides evidence of compliance under the current NCC, and is ready for NCC 2022 requirements.



FAQ

Q Can the collars be fitted around a conduit that's already been installed?

A Yes, the collars are easily retrofit-able.

Q Do I need to use sealant around the services?

A Yes, all annular gaps are to be filled with FyreFLEX® Sealant. If there is a large gap between the collar and the service, FyreFLEX® Sealant must be used to backfill the collar.

Q I've used collars on PVC pipes before, can I use them on HDPE?

A In floors, yes. FyreCHOKE Collars have been tested on HDPE up to 100mm and PPR plastic pipes up to 50mm. Contact Trafalgar Fire for more information.

Q Can I use FyreCHOKE Collars on air-conditioning pair coil?

A Yes, at the correct size. FyreFLEX® Sealant should be used to fill all gaps between the services and the collar.

Q Can I use FyreCHOKE Collars on floor waste pipes?

A No. For plastic pipes, FyreCHOKE Collars can only be used for DWV applications including plumbing stacks, sinks, basins, baths and toilets. See our floor waste collars for this application.

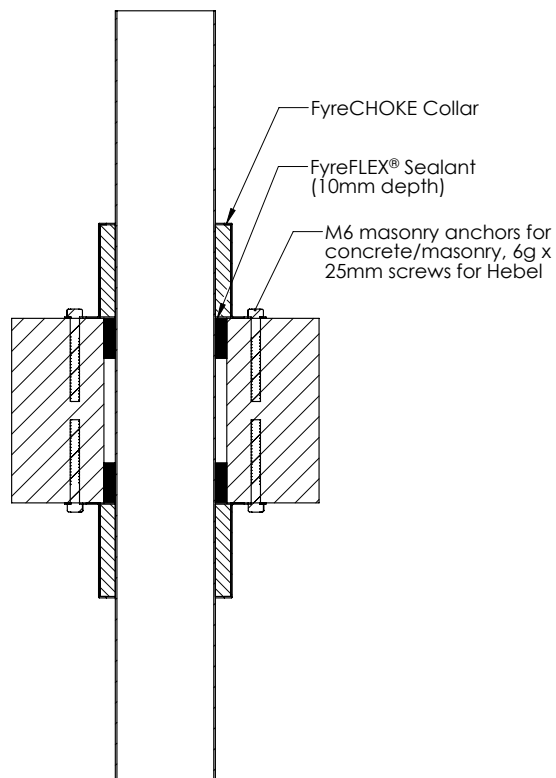
Q Can FyreCHOKE Collars be fit into bondek floor slabs?

A Yes using FyreBOARD Maxilite™. Contact Trafalgar Fire for more information.

SOCIAL MEDIA

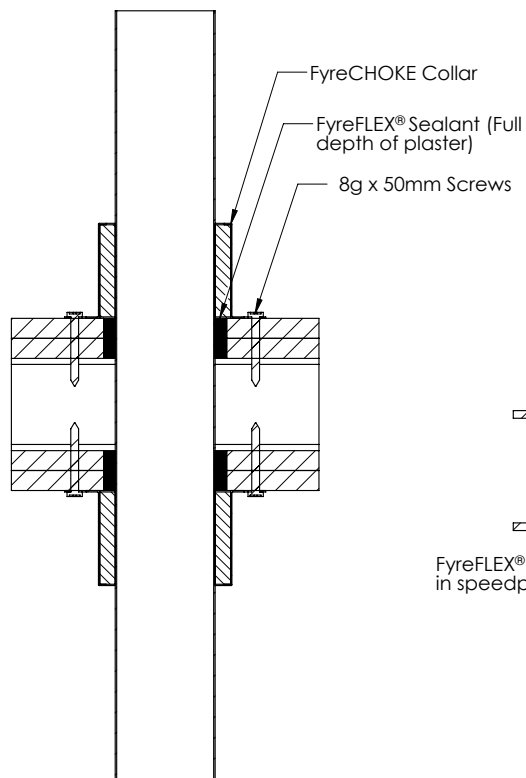


1. Concrete, Masonry or Hebel



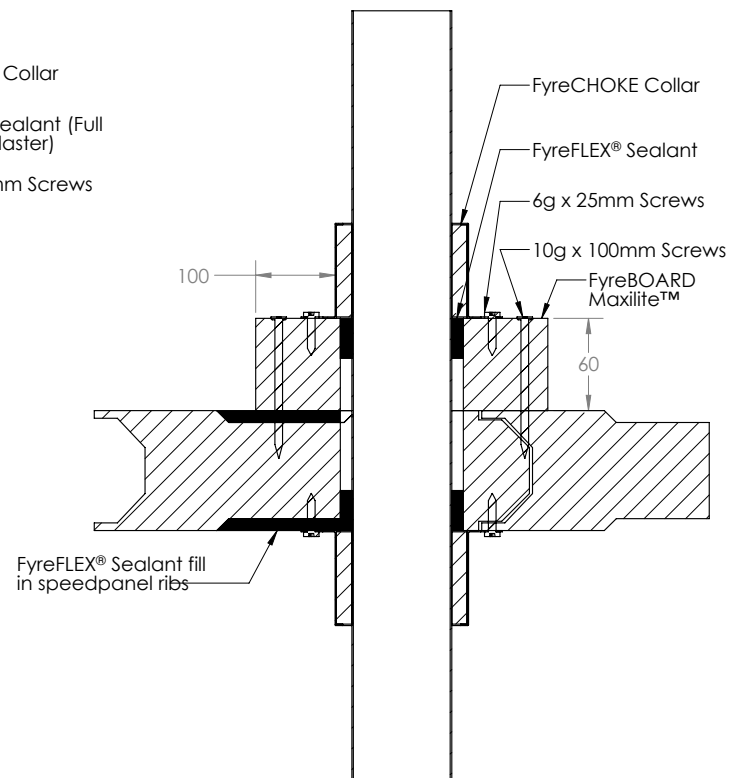
SECTION A-A

2. Plasterboard




SECTION B-B

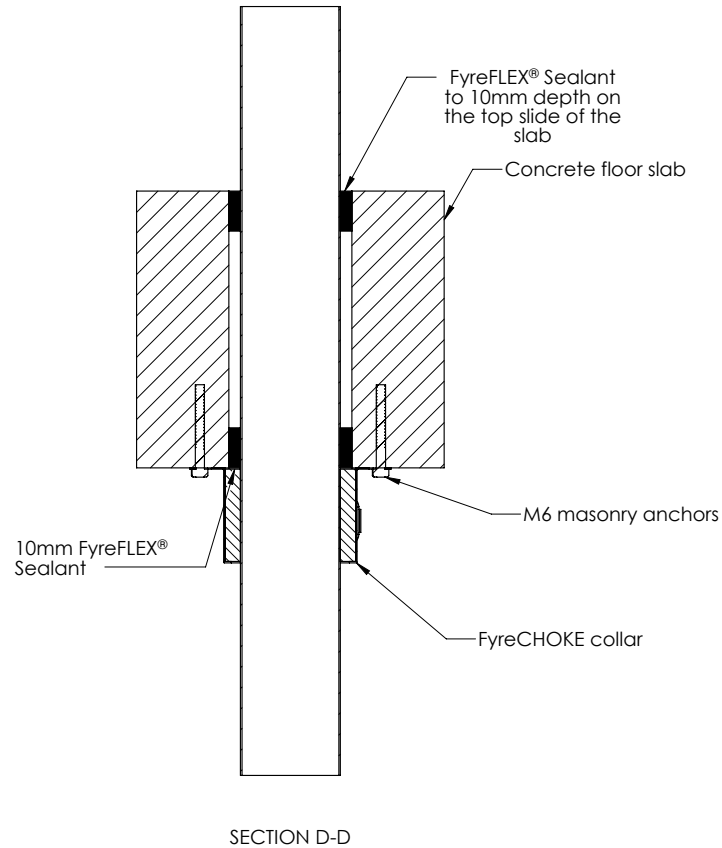
3. SpeedPanel



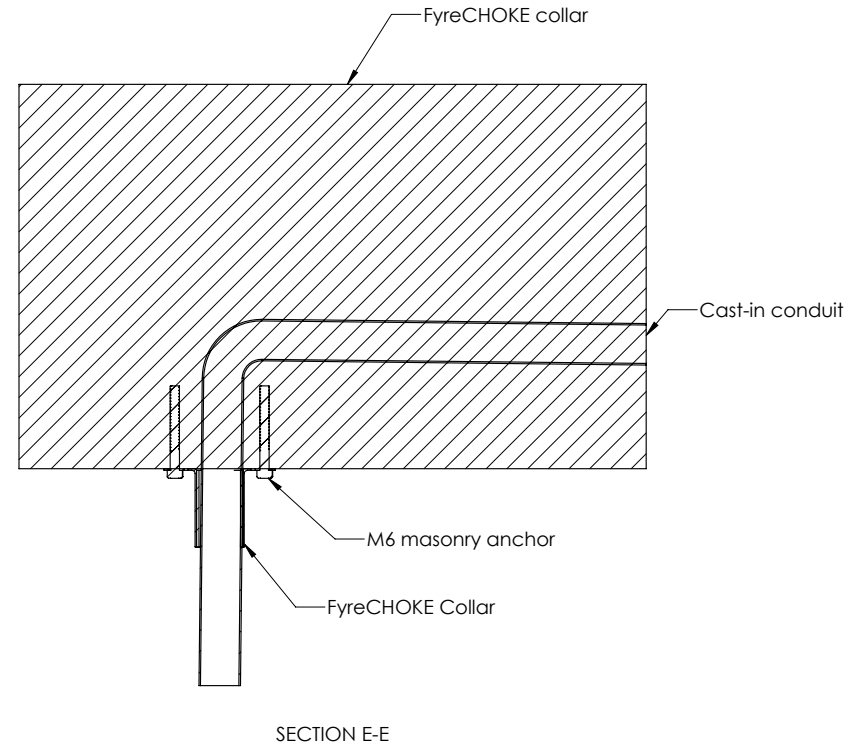
SECTION C-C


| | | | | | | | | | |
|---|-------------------------|----------------------------|----------------------|-----------------------------------|--------------------------|---|--|-------------|----------------|
| Drawing Name: Wall Installations | | | | Test Standard: AS1530.4 | Codes: | Revision: | Date: | No.: | NOTICE: |
| Project Title: FyreCHOKE Conduit and Premium Hinged Retrofit Collars | | | | Fire resistance level: | Drawn By: SM | <small>NOTE: ALL DIMENSIONS ARE IN MILLIMETRES (mm)</small> | | | |
| Drawing No. : 1 | Sheet: 1 of 3 | Date: 25/11/2020 | Scale: NTS | Based on Report No.: | Checked By: JH | <input type="checkbox"/> STANDARD DRAWING |  <p>TRAFALGAR FIRE Trafalgar Head Office: PO BOX 545 Chester Hill NSW 2162 T: 1800 888 714 F: 1800 201 500 E: technical@tgroup.com.au W: www.tfire.com.au</p> | | |
| | | | | | | <input type="checkbox"/> PROJECT DRAWING | | | |

4. Concrete Floors

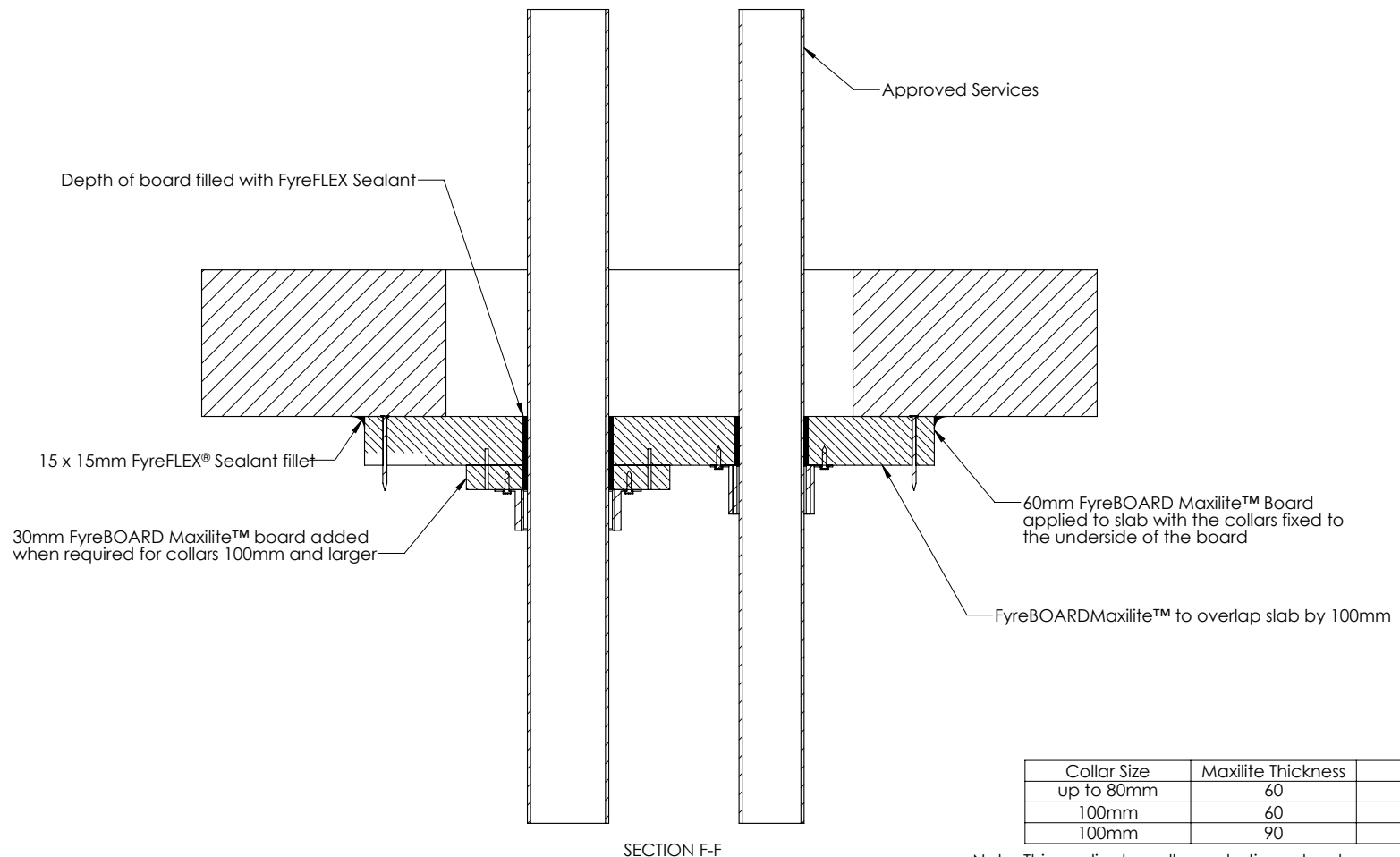


5. Cast-in Conduits




| | | | | | | | | | |
|---|-------------------------|----------------------------|----------------------|-----------------------------------|--------------------------|---|--|---|----------------|
| Drawing Name: Floor Installations | | | | Test Standard: AS1530.4 | Codes: | Revision: | Date: | No.: | NOTICE: |
| Project Title: FyreCHOKE Conduit and Premium Hinged Retrofit Collars | | | | Fire resistance level: | Drawn By: SM | <small>NOTE: ALL DIMENSIONS ARE IN MILLIMETRES (mm)</small> | | | |
| Drawing No. : 2 | Sheet: 2 of 3 | Date: 25/11/2020 | Scale: NTS | Based on Report No.: | Checked By: JH | <input type="checkbox"/> STANDARD DRAWING | <input type="checkbox"/> PROJECT DRAWING |  <p>TRAFALGAR FIRE</p> <p>PO BOX 545 Chester Hill NSW 2162 T: 1800 888 714 F: 1800 201 500 E: technical@tgroup.com.au W: www.tfire.com.au</p> | |

6. FyreBOARD Maxilite™ - Oversized Openings



| Collar Size | Maxilite Thickness | FRL |
|-------------|--------------------|-----------|
| up to 80mm | 60 | -/120/120 |
| 100mm | 60 | -/90/90 |
| 100mm | 90 | -/120/120 |

Note: This applies to wall penetrations also, however FyreCHOKE Collar's must be applied to both sides of a wall.

| | | | | | | | | | |
|---|-------------------------|----------------------------|----------------------|-----------------------------------|--------------------------|---|--|-------------|----------------|
| Drawing Name: FyreBOARD Maxilite™ | | | | Test Standard: AS1530.4 | Codes: | Revision: | Date: | No.: | NOTICE: |
| Project Title: FyreCHOKE Conduit and Premium Hinged Retrofit Collars | | | | Fire resistance level: | Drawn By: SM | <small>NOTE: ALL DIMENSIONS ARE IN MILLIMETRES (mm)</small> | | | |
| Drawing No. : 3 | Sheet: 3 of 3 | Date: 25/11/2020 | Scale: NTS | Based on Report No.: | Checked By: JH | <input type="checkbox"/> STANDARD DRAWING |  <p>TRAFALGAR FIRE PO BOX 545 Chester Hill NSW 2162 T: 1800 888 714 F: 1800 201 500 E: technical@tgroup.com.au W: www.tfire.com.au</p> | | |
| | | | | | | <input type="checkbox"/> PROJECT DRAWING | | | |