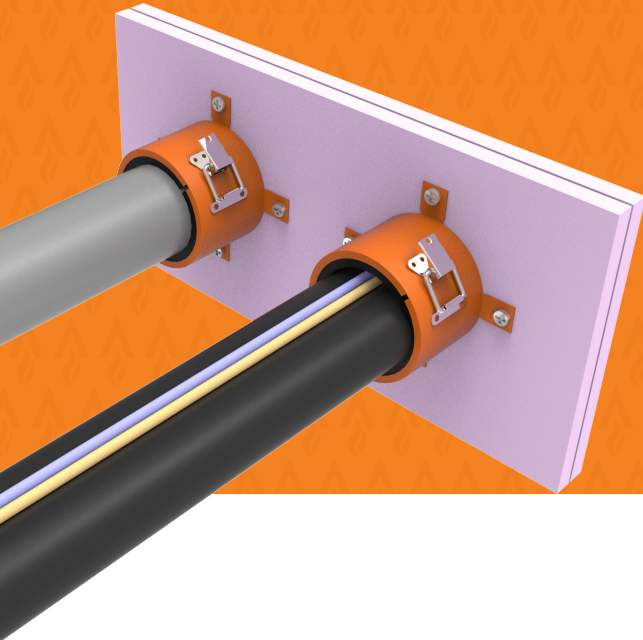


# FyreCOLLAR Premium Retrofit



Trafalgar Fire FyreCOLLAR Premium Retrofit are designed to provide maximum protection against the spread of fire through walls and floors that are penetrated by plastic conduits, plastic pipes or air-conditioning service bundles. FyreCOLLAR are simple to install, simply retro-fit around the service and fix to the wall or floor.



NOW AVAILABLE IN STAINLESS STEEL FOR HARSHER ENVIRONMENTS



Click To Watch



## KEY FEATURES



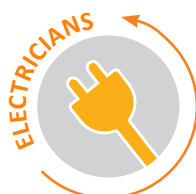
- Intumescent fire stopping for plastic pipes, conduits and air-conditioning bundle penetrations.
- Actively expands during fire conditions, forms a tight seal and prevents the spread of fire through the service penetration.
- Fire tested in a range of wall and floor systems and a wide variety of service types.
- Solid hinge and clasp with durable powder coated finish.
- Simple design allows for quick and easy installation of the collars.
- Sizes from 50-150mm

## APPLICATIONS

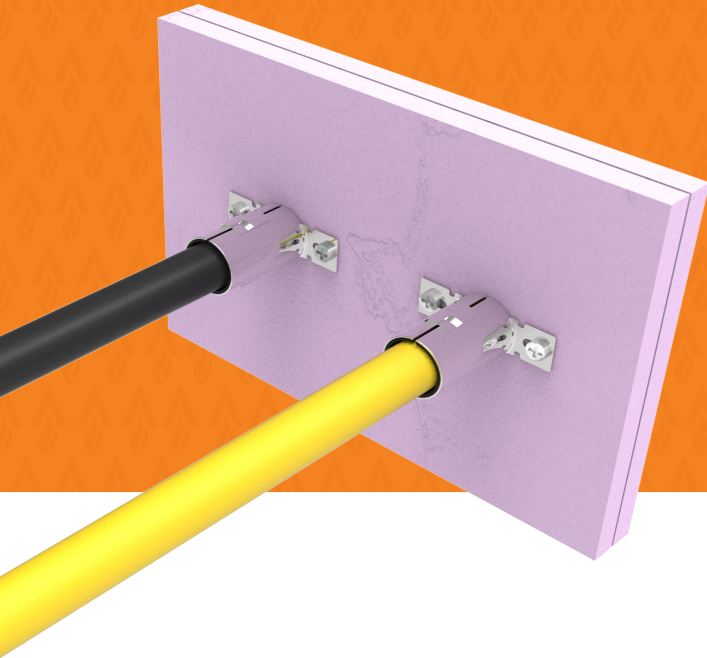


<b>Electricians</b>	Data NBN Conduits Electrical Conduits
<b>Plumbers</b>	HDPE pipes PVC pipes PEX pipes PEX-AL-PEX pipes
<b>HVAC&amp;R</b>	HVAC bundle Insulated pipes & cables

## TRADES



# FyreCOLLAR Conduit



Trafalgar Fire FyreCOLLAR Conduit are designed to provide maximum protection against the spread of fire through walls and floors that are penetrated by plastic conduits, plastic pipes. FyreCOLLAR are simple to install, simply retro-fit around the service and fix to the wall or floor.



Click To Watch



## KEY FEATURES



- Intumescent fire stopping specifically for plastic pipes and conduit penetrations.
- Actively expands during fire conditions, forms a tight seal and prevents the spread of fire through the service penetration.
- Fire tested in a range of wall and floor systems including a wide variety of service types.
- Stainless steel construction
- Simple design allows for quick and easy installation of the collars.
- Sizes 25-40mm

## APPLICATIONS



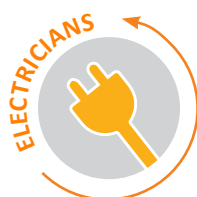
### Electricians

Data NBN Conduits  
Electrical Conduits

### Plumbers

PVC pipes  
PEX pipes  
PEX-AL-PEX pipes

## TRADES



# TABLE OF CONTENTS



Section	Trade	Page
Benefits		4
System Selector		5
Fire Resistance Level		6
FRL Tables	PVC Pipes 	7
	PEX & PEX-AL-PEX Pipes 	9
	PVC Conduits Electrical & Data 	10
	Pair Coil Bundles 	11
Installation Manual	Annular Gaps	12
	FyreCOLLAR - All Walls & Floors	13
	FyreCOLLAR - Wall & Floor Types	14
What is TWRAP™?		15
System Range		16
Compliance		18
FAQ		19
Technical Drawings	Walls Installations	20
	Floors Installations	21
	FyreBOARD Maxilite®	22
	Half-Wall Configurations	23
	Permanent Formwork	24
	Bundled Conduit Penetrations	25

# Fyre COLLAR

## WHAT ARE Fyre COLLAR?

Trafalgar Fire's Collar range includes the Fyre COLLAR Conduit and the larger Fyre COLLAR Premium Retrofit. They utilise a simple lock mechanism to secure around a service before being fastened to the wall or floor using integrated fixing tabs at the base of the collar.

Fyre COLLAR systems have been extensively tested and approved to AS1530.4-2014 & AS4072.1 in accordance with the National Construction Code, and are suitable for use under NCC2022 test requirements.

The Fyre COLLAR Conduit features the innovative two-piece 'slide-lock joint' mechanism, and are ideal for use in tight, difficult to reach locations. Their stainless-steel casing is supplied standard and is ideal for use in aggressive environments.

The Fyre COLLAR Premium Retrofit has a high-quality powder-coated finish and is ideal for applications where aesthetics of the system is important and easy identification is paramount.

## APPLICATIONS

### Fyre COLLAR Conduit Collars (25-40mm)

- PVC conduits including NBN or other fibre conduits.
- PVC conduits with residential (TPS) and three-phase (three core and Earth) power cables.
- PVC drain lines.
- PEX and PEX-AL-PEX pipes.

### Fyre COLLAR Premium Retrofit (50-150mm)

- PVC, PP-R and HDPE stack pipes (DWV) in floors.
- PVC stack pipes with elbow sockets in floors.
- PVC stack pipes (DWV) in walls.
- HVAC & R service bundles with multiple sets of pair coil and their associated cables through walls and floors.

Not suitable for Floor Waste applications. Contact Trafalgar Fire for more details.

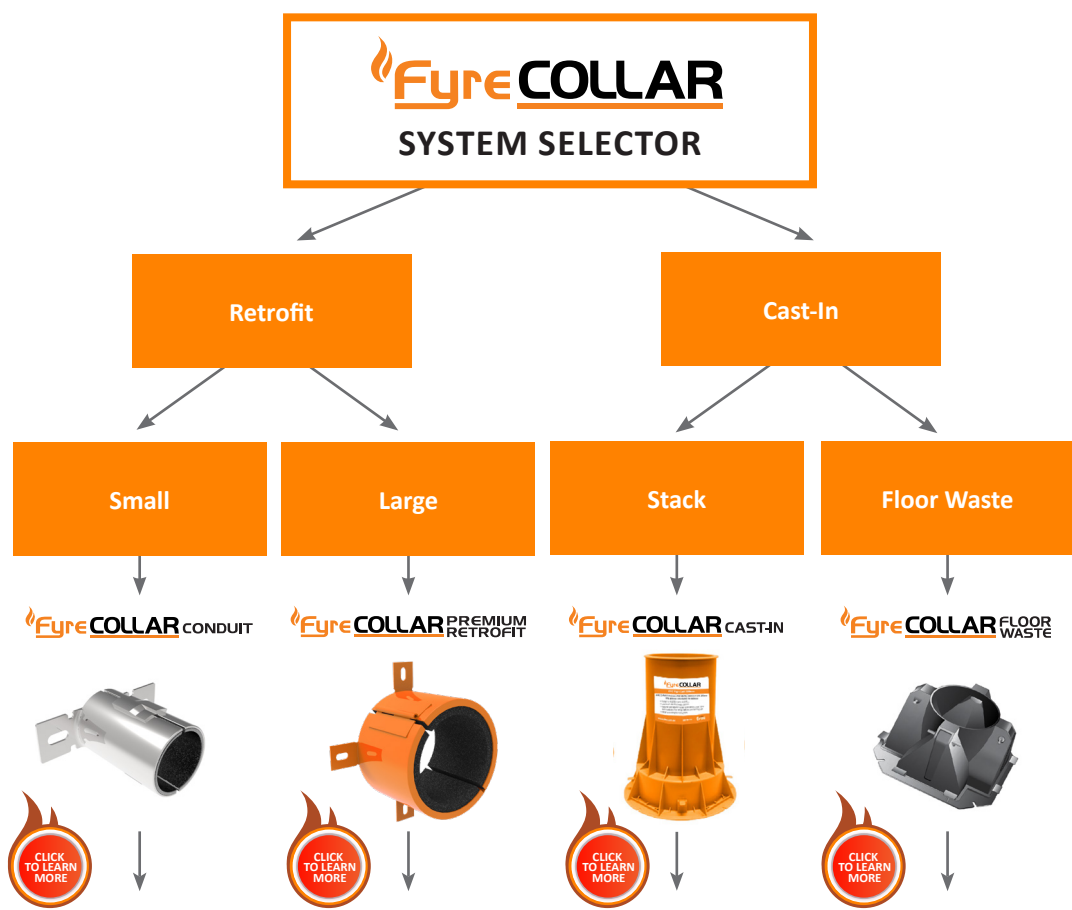
## Fyre COLLAR CONDUIT



## Fyre COLLAR PREMIUM RETROFIT



NOW AVAILABLE IN STAINLESS STEEL FOR HARSHER ENVIRONMENTS



		Fyre COLLAR CONDUIT	Fyre COLLAR PREMIUM RETROFIT	Fyre COLLAR CAST-IN	Fyre COLLAR FLOOR WASTE
Fire Barrier	Installation Prior to Fire Barrier Construction	x	x	✓	✓
	Concrete Slab	✓	✓	✓	✓
	FyreSET Mortar	x	x	x	x
	Masonry Walls	✓	✓	x	x
	Concrete Walls	✓	✓	x	x
	Plasterboard	✓	✓	x	x
	Hebel	✓	✓	x	x
	Walsc	✓	✓	x	x
	SpeedPanel	✓	✓	x	x
	FyreBOARD Maxilite®	✓	✓	x	x
Services	PVC Conduits	✓	✓ 50mm	x	x
	Insulated Metal Pipes	x	✓	x	x
	PVC Pipes	✓	✓	✓	✓
	HDPE	x	✓ Floors	✓	✓ 50mm
	PEX	✓	x	x	x
	PEX-AL-PEX	✓	x	x	x

For full FRL details please consult the relevant technical guide or contact Trafalgar Fire. Fire testing of Trafalgar Fire products is always ongoing.

# FyreCOLLAR CONDUIT AND PREMIUM RETROFIT

## FIRE RATING – HOW IS FIRE PERFORMANCE MEASURED?

An FRL (fire resistance level) is a handy way of summarising the performance of a building element. It consists of 3 numbers, all given in minutes:

### FRL 240/240/240

(example)



#### Structural Adequacy

The ability of the building element to support the weight of adjacent building elements.

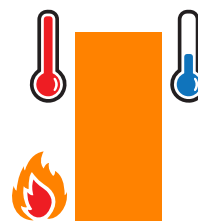
ie: a brick wall supporting a concrete floor slab above.



#### Integrity

The ability of an element to prevent the passage of flames and hot gasses.

ie: a plasterboard wall remaining intact and not allowing holes to form.



#### Insulation

The ability of an element to resist heat transfer from the exposed face to the unexposed face.

ie: a bundle of cables remaining below a set temperature limit on the unexposed side of the wall penetration system.

*Penetrations are not required to have a Structural Adequacy rating and is usually expressed as a dash. For example, a penetration through a 4-hour load bearing wall would be written as -/240/240.*

## INTEGRITY

The FyreCOLLAR system will achieve the integrity performance for up to 4 hours physically stopping the direct spread of fire, however the insulation performance of the penetration will be limited to the type of wall being used and conductivity of the services in the penetration.

## INSULATION (TEMPERATURE RISE)

Heat transfer via conduction (or heat rise) will occur through the conductive parts of any penetration system. To limit the heat rise through the FyreCOLLAR penetration systems, our 25mm thick TWRAP™ foil encased blanket can be wrapped around the services to achieve up to 2 hours of insulation performance. There are some applications that won't require any TWRAP™ to achieve the full FRL, please refer to the tables below for specific details.



# PVC PIPES

Plasterboard, AAC/Hebel Walls  
Speedpanel, Concrete/Masonry Walls  
Concrete Floors



PVC Pipe Size	Collar Size	IntRwall ***#	Plasterboard (64mm stud)		AAC Walls/ Hebel	Speedpanel ***	Concrete/ Masonry Walls	CLT Floors	Concrete Floors		
			Single Layer						Thickness	120mm	180mm**
			57mm	13mm	16mm	13mm	75mm	78mm			
16	25mm	-/60/60	-/60/60	-/90/90	-/120/120	-/120/120	-/120/120	-/120/120	-/120/90	-/120/120	-/240/240
20		-/60/60	-/60/60	-/90/90	-/120/120	-/120/120	-/120/120	-/120/120	-/120/90	-/120/120	-/240/240
25		-/60/60	-/60/60	-/90/90	-/120/120	-/120/120	-/120/120	-/120/120	-/120/90	-/120/120	-/240/240
32	32mm	-/60/60	-/60/60	-/90/90	-/120/120	-/120/120	-/120/120	-/120/120	-/120/90	-/120/120	-/240/240
40	40mm	-/60/60	-/60/60	-/90/90	-/120/120	-/120/120	-/120/120	-/120/120	-/120/90	-/120/120	-/240/240
50	50mm	-/60/60	-/60/60	-/90/90	-/120/120	-/120/120	-/120/120	-/120/120	-/120/90	-/120/120	-/240/240
65	65mm	-/60/60	-/60/60	-/90/90	-/120/120	-/120/120	-/120/120	-/120/120	-/120/90	-/120/120	-/240/240
80	80mm	-/60/60	-/60/60	-/90/90	-/120/120	-/120/120	-/120/120	-/120/120	-/120/90	-/120/120	-/240/240
100	100mm	-/60/60	-/60/60	-/90/90	-/120/120	-/120/120	-/120/120	-/120/120	-/120/120	-/120/120	-/240/240
100 (Socket)	130mm	-	-	-	-	-	-	-	-	-/120/120	-/240/240
150	150mm	-	-/60/60*	-/90/90*	-/120/120	-/120/120*	-/120/120	-/120/120	-	-/120/120	-/180/180

\*With min. 30mm thick patch of Maxilite panel each side of wall.  
 \*\*Also suitable for HDPE pipes up to -/240/240 up to 100mm in size.  
 \*\*\*Additional thickening required, see page 14.  
 # Refer to IGNE-25042-01R for approvals

*FyreCOLLAR are also suitable for use with **FyreBOARD Maxilite®**, if the opening is too large and needs to be closed.*

## APPLICATIONS RANGE (DWV)

In accordance with Australian Standards, tested pipes are approved for drain, waste and vent applications such as toilets, sinks and showers. Tested pipes are not suitable for floor waste pipes, contact Trafalgar Fire for assistance with this if required.





# PVC PIPES

## CEILING PENETRATIONS Plasterboard Ceiling



PVC Pipe Size	Collar Size	Plasterboard (with 60mm Maxilite patch on underside)	
		1x 13mm + 1x 16mm	3x 16mm
16	25mm	-/60/60 (60 RISF)	-/120/120 (120 RISF)
20		-/60/60 (60 RISF)	-/120/120 (120 RISF)
25		-/60/60 (60 RISF)	-/120/120 (120 RISF)
32	32mm	-/60/60 (60 RISF)	-/120/120 (120 RISF)
40	40mm	-/60/60 (60 RISF)	-/120/120 (120 RISF)
50	50mm	-/60/60 (60 RISF)	-/120/120 (120 RISF)
65	65mm	-/60/60 (60 RISF)	-/120/120 (120 RISF)
80	80mm	-/60/60 (60 RISF)	-/120/120 (120 RISF)
100	100mm	-/60/60 (60 RISF)	-/120/120 (120 RISF)

*FyreCOLLAR are also suitable for use with **FyreBOARD Maxilite®**, if the opening is too large and needs to be closed.*

### APPLICATIONS RANGE (DWV)

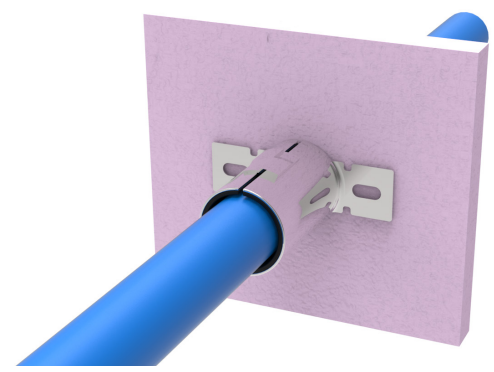
In accordance with Australian Standards, tested pipes are approved for drain, waste and vent applications such as toilets, sinks and showers. Tested pipes are not suitable for floor waste pipes, contact Trafalgar Fire for assistance with this if required.



# PEX & PEX-AL-PEX PIPES



Plasterboard, AAC/Hebel Walls  
Speedpanel, Concrete/Masonry Walls  
Concrete Floors

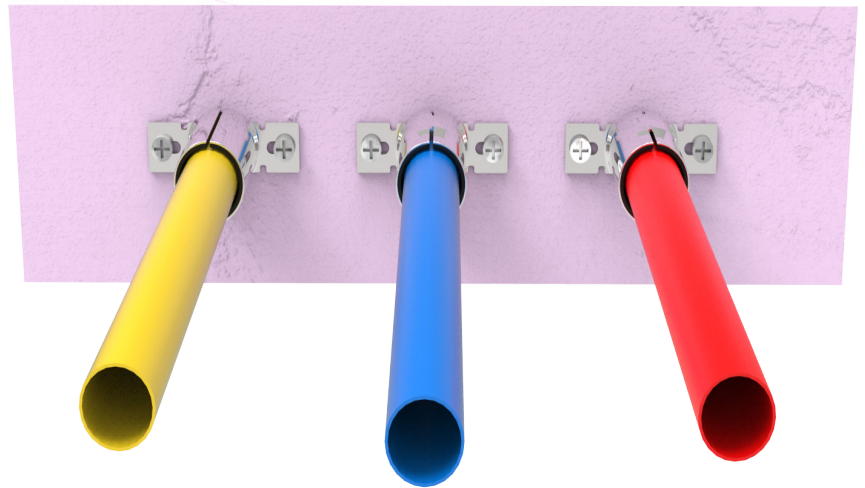


Pipe Type	Pipe Size	Collar Size	Plasterboard (64mm stud)			AAC Walls/ Hebel	Speedpanel*	Concrete/ Masonry Walls	Concrete Floors
			Single Layer		Double Layer				Thickness
			13mm	16mm	13mm	75mm	78mm	120mm	
PEX-A	up to 25mm	25mm	-/60/60	-/90/90	-/120/120	-/90/90	-/120/120	-/120/120	-/120/120
PEX-B	up to 25mm		-/60/60	-/90/90	-/120/120	-/90/90	-/120/120	-/120/120	-/120/120
PEX	up to 25mm		-/60/60	-/90/90	-/120/120	-/120/120	-/120/120	-/120/120	-/120/120

\*Additional thickening required, see [page 14](#).

*FyreCOLLAR Conduit are also suitable for use with [FyreBOARD Maxilite®](#), and [FyreBATT](#) penetration systems, ideal for closing oversized openings.*

*FyreCOLLAR Collars may be installed on penetrations as close as 40mm apart.*



# PVC Conduits Electrical & Data



Plasterboard, AAC/Hebel Walls  
Speedpanel, Concrete/Masonry Walls  
Concrete Floors



Conduit Size	Collar Size	IntRwall	Plasterboard (64mm stud)			AAC Walls/ Hebel	Speedpanel*	Concrete/ Masonry Walls	Concrete Floors	Maxilite Board
			Single Layer		Double Layer				Thickness	Thickness
			57mm	13mm	16mm				13mm	75mm
20	25mm	-	-/60/60	-/90/90	-/120/120	-/120/120	-/120/120	-/120/120	-/120/120	
25		-/60/60**	-/60/60	-/90/90	-/120/120	-/120/120	-/120/120	-/120/120	-/120/120	
32	32mm	-	-/60/60	-/90/90	-/120/120	-/120/120	-/120/120	-/120/120	-/120/120	
40	40mm	-	-/60/60	-/90/90	-/120/120	-/120/120	-/120/120	-/120/120	-/120/120	
50	50mm	-	-/60/60	-/90/90	-/120/120	-/120/120	-/120/120	-/120/120	-/120/120	
65	65mm	-	-	-	-	-	-	-	-/120/120	
80	80mm	-	-	-	-	-	-	-	-/120/120	

Flexible, rigid, or heavy duty (orange) conduits may contain any combination of the following up to the maximum that can be accommodated; 2C & E 2.5mm TPS, CAT5/CAT6 data cable, 3C & E PVC sheathed power cables up to 19mm diameter or fibre optic cables.

Penetrations through Plasterboard lined walls in the Half wall configurations shown in [page 22](#) will maintain their established FRLs.

# Where penetrations pass through the thinner areas of a steel deck concrete slab the established FRLs are maintained provided any gap between the FyreCOLLAR and the trough in the formwork is filled with 60mm thick FyreBATT.

\*Additional thickening required, see [page 14](#).

\*\*Approved services: 1x fibre optic cable or 1 x RG6 coax cable and 1 x Cat 6 communications cable wrap free only. If collar and conduit is lagged with min 600mm TWrap, conduit can be filled with any electrical cables.



# RETROFIT APPLICATIONS

## MIXED SERVICE COLLAR APPROVALS



### APPROVED SERVICE BUNDLES

Service	Specification	Size(s)
Refrigeration pipes	Copper pipes with FR insulation	Single copper pipes up to 20mm with FR insulation
Pair coil	Twin copper tubes with FR or PE thermal insulation	Up to 20mm diameter (3/4" & 3/8" for examples) copper pipe with: <ul style="list-style-type: none"> <li>FR Pipe insulation up to 25mm thickness</li> <li>PE Pipe insulation up to 19mm</li> </ul>
<b>Optional inclusion of:</b>		
Power cable	TPS or orange circular cables	<ul style="list-style-type: none"> <li>TPS cables up to 2.5mm<sup>2</sup></li> <li>3C+E cables up to 2.5mm<sup>2</sup></li> </ul>
Data cable	CAT6	6mm OD
Drain Pipe	PVC	Up to 25mm

Fire barrier (min thickness)	Installation	Wrap Free FRL*	FRL with 300mm TWRAP™	
Single layer 13mm plasterboard wall	Refrigeration pipes and up to 3x HVAC Service bundles, each consisting of: <ul style="list-style-type: none"> <li>1xPair coil</li> <li>1xPower cable</li> <li>1xData cable</li> <li>PVC drain</li> </ul>	-/60/60	<b>Wrap Free</b>	
Single layer 16mm plasterboard wall		-/90/60	-/90/90	
Double layer 13mm plasterboard wall		N/A	-/120/120	
Hebel® or WALSC AAC panel 75mm wall		-/90/60	-/120/120	
Speedpanel® 78mm wall		N/A	-/120/120	
Concrete/masonry walls		N/A	-/120/120	
Concrete floors		Collar/core hole size dependent on quantity and size of services.	-/120/120**	-/120/120
FyreBOARD Maxilite® board 60mm		N/A	-/90/60	
FyreBOARD Maxilite® board 90mm (locally thickened)		-/90/60	-/120/120	
Floor CLT 90mm thick w/ 16mm plasterboard to exposed face		Refrigeration pipes and up to 1x HVAC Service bundles, each consisting of: <ul style="list-style-type: none"> <li>1xPair coil</li> <li>1xPower cable</li> <li>1xData cable</li> <li>1x PVC drain</li> </ul>	N/A	-/120/90
1x13mm + 1x 16mm plasterboard ceiling w/local 60mm Maxilite patch	N/A	-/60/60 (RISF 60)		
3x 16mm plasterboard ceiling w/local 60mm Maxilite patch	Collar/core hole size dependent on quantity and size of services.	N/A	-/120/120 (RISF 120)	

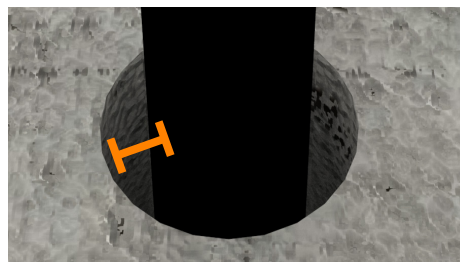
\*\* Applies to max of x2 pair coil only.

# INSTALLATION ANNULAR GAP REQUIREMENTS

## HOLE SIZES

### WHAT IS AN ANNULAR GAP?

The annular gap is the clearance between the pipe and the hole as illustrated in this image by the orange bar. Annular gaps should be limited to a maximum of 7.5mm, as shown below.



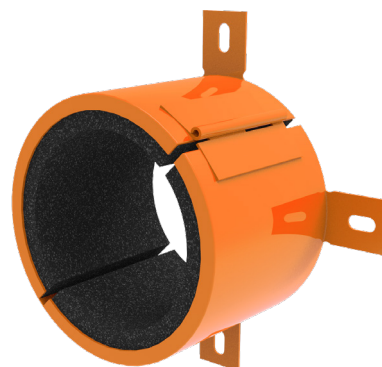
### TABLE 1: FyreCOLLAR CONDUIT

Product Code	Collar Size	Max Hole Size
FyreCOLLAR-CC-25	25mm	40mm
FyreCOLLAR-CC-32	32mm	47mm
FyreCOLLAR-CC-40	40mm	55mm



### TABLE 2: FyreCOLLAR RETROFIT

Product Code	Collar Size	Max Hole Size
FyreCOLLAR-PHRC-50	50mm	65mm
FyreCOLLAR-PHRC-65	65mm	80mm
FyreCOLLAR-PHRC-80	80mm	95mm
FyreCOLLAR-PHRC-100	100mm	115mm
FyreCOLLAR-PHRC-130	130mm	145mm
FyreCOLLAR-PHRC-150	150mm	165mm



*Note: This table references a maximum annular gap of 7.5mm between the service and the hole in the separating barrier. Annular gaps are to be sealed with FyreFLEX® Sealant.*

# INSTALLATION

## FyreCOLLAR IN WALLS & FLOORS

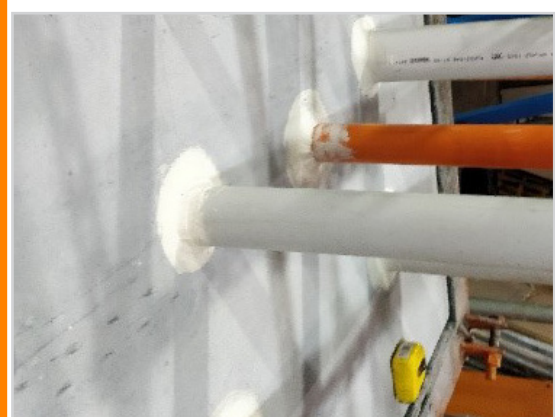
### ALL WALLS & FLOORS

#### CUT HOLE



Ensure that the opening in the wall/floor is within the approved size range (no more than 7.5mm annular gap as per the table on [page 12](#)). Ensure the surface is clean for the installation of FyreFLEX® Sealant.

#### SEAL



Fill the annular gap between the service and wall with FyreFLEX® Sealant for a depth of 10mm, on both sides of a wall or top and bottom of a floor.

*FyreFLEX® Sealant between the hole and services can be applied flush with the wall without a fillet. Check the table on [page 12](#) for the appropriate hole size for each collar.*

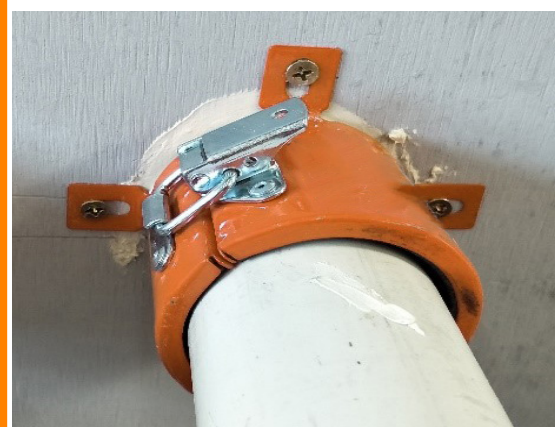
#### FIT



For the FyreCOLLAR Conduit, separate the two halves, fit them on either side of the service before sliding the halves back together.

For the FyreCOLLAR Premium Retrofit, undo the latch to open the collar, secure it around the service/s, and re-secure the latch.

#### FIX



Use appropriate fixings as per page 14 to secure the collar to the wall/floor using all of the available the fixing tabs. **Collars are required on both sides of all walls, but only on the underside of floors**

Click To Watch



# INSTALLATION FyreCOLLAR IN WALLS & FLOORS

## ALL WALLS & FLOORS

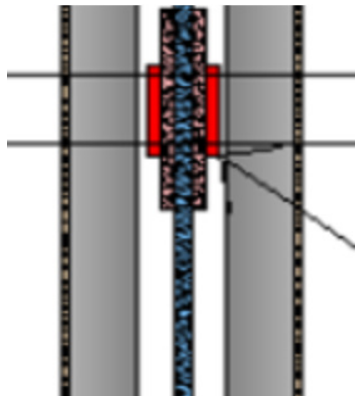


### THICKEN SPEEDPANEL



Speedpanel walls require a 60mm thick piece of FyreBOARD Maxilite® to be screw fixed onto one side of the penetration, before attaching the collar. See table below for screw fixings. Seal all gaps and perimeter with FyreFLEX® Sealant.

### INTRWALL



Intrwall systems require 16mm Fyrecheck on both sides of the wall, at least 75mm past the collar in all directions. Secured with 10g x 38mm Gyprock laminating screws at max 200mm centres.



### BACKFILL



Where annular gaps exist between the services and the collar, back-fill these FyreFLEX® Sealant to the full depth of the collar.

*Collars are installed to the bottom side of a floor only, or to both sides of a wall.*

**TABLE 3: FyreCOLLAR FIXINGS**

	Type	Fixing
Walls	Single Layer Plasterboard	8gx50mm plasterboard screws
	Double Layer Plasterboard	
	FyreBOARD Maxilite®	
	AAC Wall/ Hebel 75mm	6g x 25mm screws
	Speedpanel 78mm	Side 1 into bare Speedpanel - HEX head metal screws 12-14 x 20mm Side 2 FyreBOARD Maxilite® into Speedpanel - 10g x 100mm plasterboard screws in each corner Side 2 Collar into FyreBOARD Maxilite® - 6 x 25mm screws
	Concrete/Masonry	M6 x 50mm masonry anchors, or steel knock in anchors
Floors	Concrete/Masonry	M6 x 50mm masonry anchors, or steel knock in anchors

# WHAT IS TWRAP™?



TWRAP™ is a 25mm thick foil-faced, insulation wrap that has been engineered to provide insulation performance on service penetrations as required by the National Construction Code (NCC) in modern construction and has been tested specifically with some FyreCOLLAR systems to AS1530.4-2014.

TWRAP™ is not required for plastic pipe penetration systems however some air-conditioning bundles will require TWRAP™ to achieve the full insulation performance of the penetration (as per [page 10](#)).

TWRAP's aluminium foil, fiberglass-reinforced outer layer completely encapsulates the core and provides additional handling strength, protection from tearing and provides a high resistance to mould growth.

If required, TWRAP™ is wrapped around the services for the distance specified in the approval's tables. The TWRAP™ is to overlap itself by 50mm around the services at any joins, and is to be fixed with steel cable ties 50mm from each end and at 150mm centres between (or foil tape).



Click here to go back to Contents



# SYSTEM RANGE

## Fyre COLLAR CONDUIT

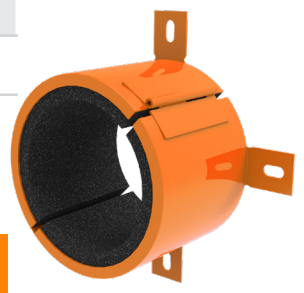
CLICKABLE CODES

Item Number	Collar Size	To Suit Nominal Service Size	Inner Diameter	Outer Diameter	Height	Min Order Qty
FyreCOLLAR-CC-25	25mm	25mm	26mm	36mm	50mm	1
FyreCOLLAR-CC-32	32mm	32mm	33mm	44mm	50mm	1
FyreCOLLAR-CC-40	40mm	40mm	43mm	48mm	50mm	1

## Fyre COLLAR PREMIUM RETROFIT

CLICKABLE CODES

Item Number	Collar Size	To Suit Nominal Service Size	Inner Diameter	Outer Diameter	Height	Min Order Qty
FyreCOLLAR-PHRC-50	50mm	50mm	58mm	72mm	62mm	1
FyreCOLLAR-PHRC-65	65mm	65mm	72mm	90mm	62mm	1
FyreCOLLAR-PHRC-80	80mm	80mm	85mm	102mm	62mm	1
FyreCOLLAR-PHRC-100	100mm	100mm	115mm	133mm	62mm	1
FyreCOLLAR-PHRC-130	130mm	100mm Elbow/socket	130mm	155mm	62mm	1
FyreCOLLAR-PHRC-150	150mm	150mm	160mm	200mm	62mm	1



## Fyre COLLAR STAINLESS STEEL RETROFIT

CLICKABLE CODES

Item Number	Collar Size	To Suit Nominal Service Size	Inner Diameter	Outer Diameter	Height	Min Order Qty
FyreCOLLAR-SSHRC-50	50mm	50mm	58mm	72mm	62mm	1
FyreCOLLAR-SSHRC-65	65mm	65mm	72mm	90mm	62mm	1
FyreCOLLAR-SSHRC-80	80mm	80mm	85mm	102mm	62mm	1
FyreCOLLAR-SSHRC-100	100mm	100mm	115mm	133mm	62mm	1
FyreCOLLAR-SSHRC-130	130mm	100mm Elbow/socket	130mm	155mm	62mm	1
FyreCOLLAR-SSHRC-150	150mm	150mm	160mm	200mm	62mm	1



# FyreCOLLAR



## COMPLIANCE WITH THE NATIONAL CONSTRUCTION CODE (NCC)

*Formerly known as BCA*

Under the building code, a Deemed to Satisfy (DTS) solution is one that satisfies the performance requirements set out in section C of volume one. Section C specifically deals with the fire protection of openings in fire barriers (i.e. service penetrations in fire rated walls and floors).

### Section C3.15 – Openings for Service Installations

Where any service penetrates a fire barrier that has a Fire Resistance Level (FRL) with respect to integrity and insulation, the installation should comply with:

A Fire Tested System – An identical prototype, installed in the same wall or floor system that has been tested/approved to the fire testing standard AS1530.4 and AS4072.1 which has achieved an FRL of equal to or greater than that required by the fire barrier.

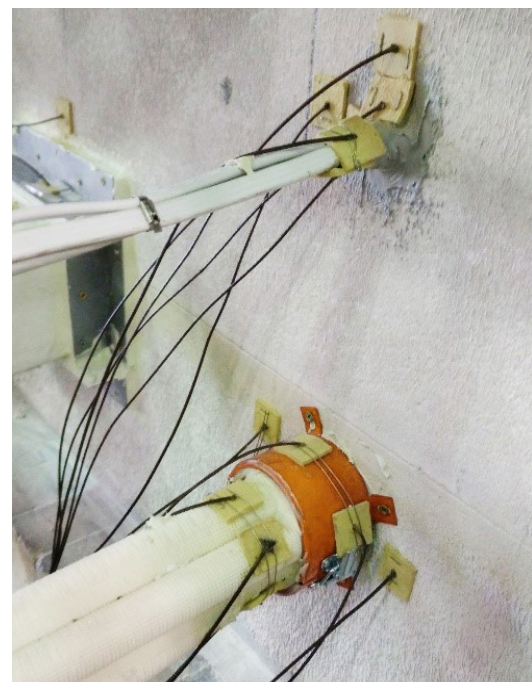
For example, if the site has a -/120/120 plasterboard wall system with an electrical conduit penetration, the product used to seal the cables must have been fire tested at an approved laboratory WITH the conduit filled with electrical cables IN the same wall type AND tested for at least 120 minutes without failing the integrity or insulation criteria.

*Compliance will only be achieved when the installation on site mirrors the tested system.*

## TEST AND ASSESSMENT REPORTS

Fire testing is a timely and expensive process, and it is impossible to test every single possible service configuration 'identically' in a practical sense. Under the building code C3.15(a)(i)(B) a testing authority is permitted to write a formal assessment confirming the likely fire performance (FRL) of the penetration. The guidelines for what can and can't be included in a formal assessment are outlined in AS4072.1.

The most recent FyreCOLLAR assessment report is FC11190 which was written by expert Fire Engineers from a NATA approved laboratory in accordance with AS1530.4-2014, and provides evidence of compliance under the current NCC, and is ready for NCC 2022 requirements.



## FAQ

**Q Can the collars be fitted around a conduit that's already been installed?**

**A** Yes, the collars are easily retrofit-able.

**Q Do I need to use sealant around the services?**

**A** Yes, all annular gaps are to be filled with FyreFLEX® Sealant. If there is a large gap between the collar and the service, FyreFLEX® Sealant must be used to backfill the collar.

**Q I've used collars on PVC pipes before, can I use them on HDPE?**

**A** In floors, yes. FyreCOLLAR have been tested on HDPE up 100mm and PPR plastic pipes up to 50mm. Contact Trafalgar Fire for more information.

**Q Can I use FyreCOLLAR on air-conditioning pair coil?**

**A** Yes, at the correct size. FyreFLEX® Sealant should be used to fill all gaps between the services and the collar.

**Q Can I use FyreCOLLAR on floor waste pipes?**

**A** No. For plastic pipes, FyreCOLLAR can only be used for DWV applications including plumbing stacks, sinks, basins, baths and toilets. See our floor waste collars for this application.

**Q Can FyreCOLLAR be fit into bondek floor slabs?**

**A** Yes using FyreBOARD Maxilite®. Contact Trafalgar Fire for more information.

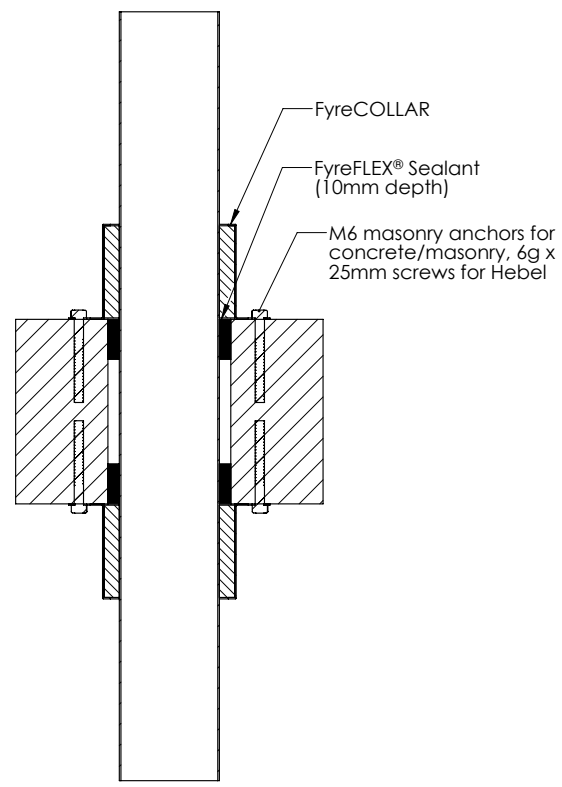
## SOCIAL MEDIA



**LinkedIn**

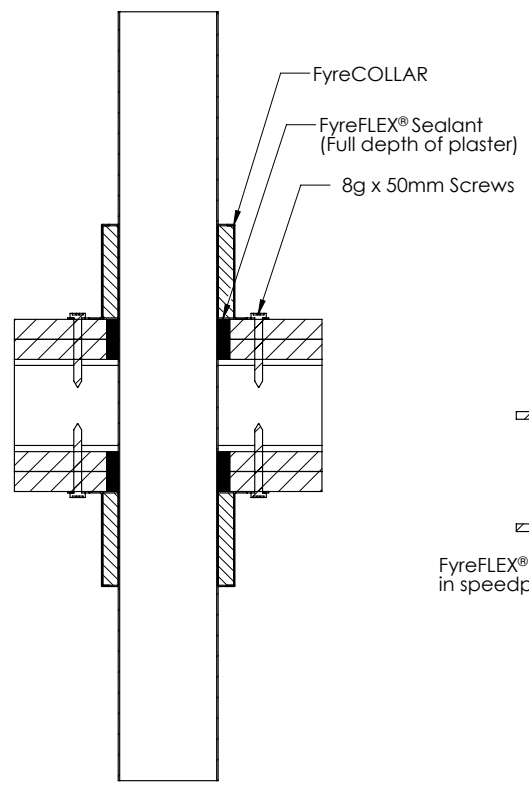
**YouTube**

**1. Concrete, Masonry or Hebel**



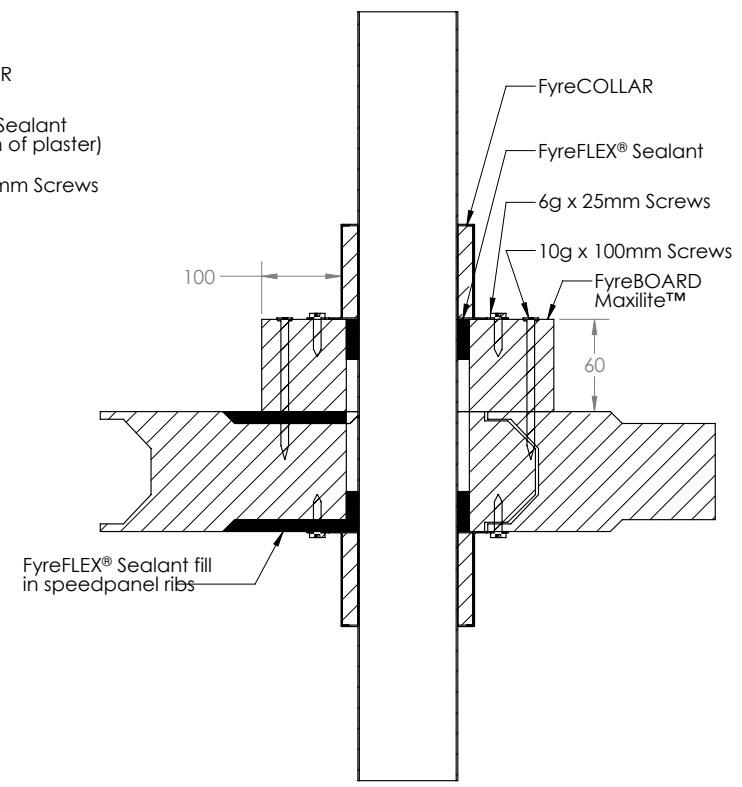
SECTION A-A

**2. Plasterboard**




SECTION B-B

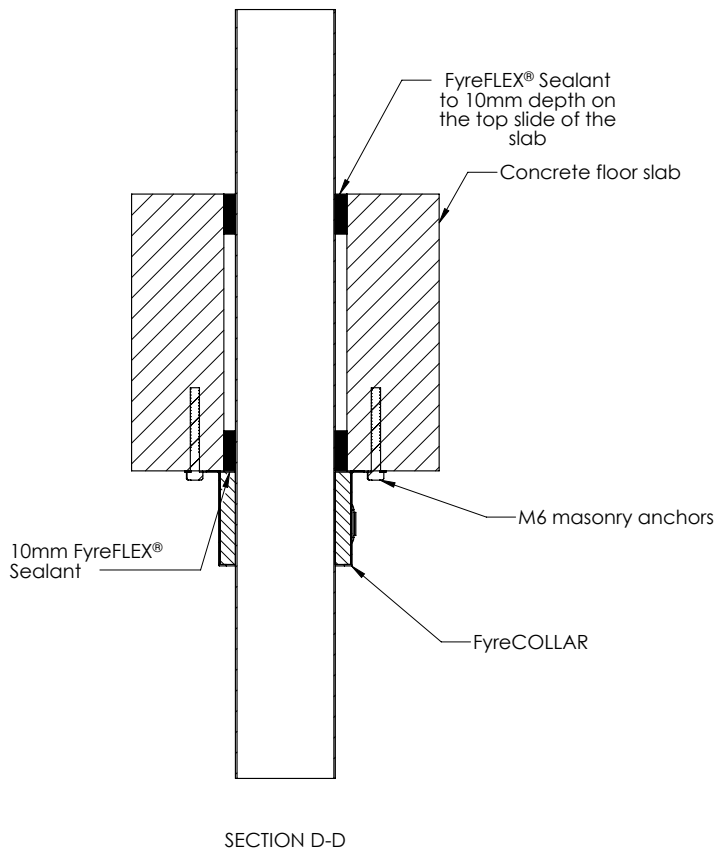
**3. SpeedPanel**



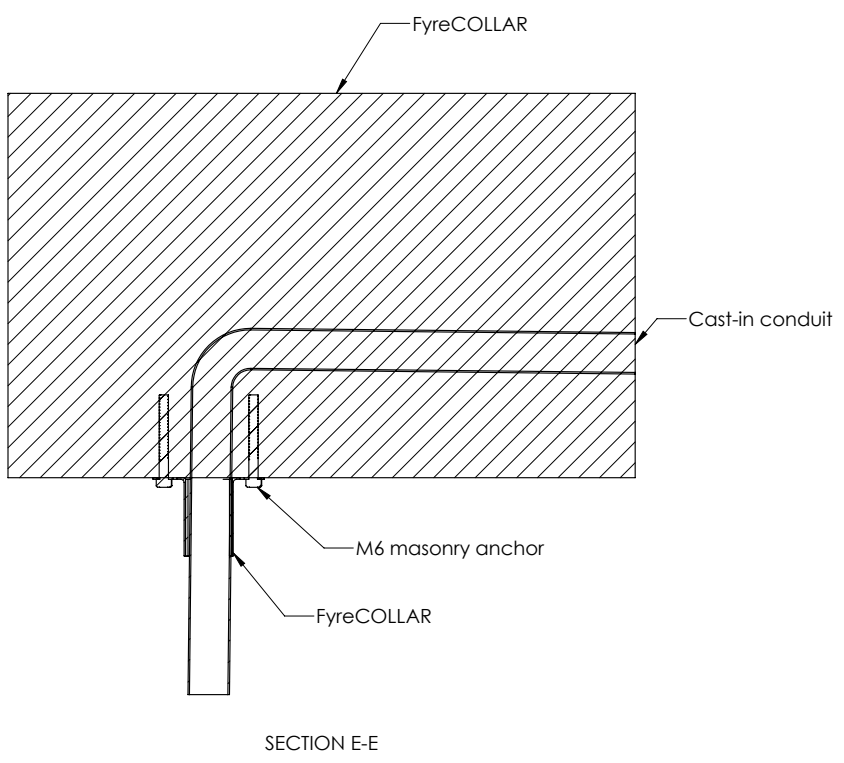
SECTION C-C

<b>Drawing Name:</b> Wall Installations				<b>Test Standard:</b> AS1530.4	<b>Codes:</b>	<b>Revision:</b>	<b>Date:</b>	<b>No.:</b>	<b>NOTICE:</b>
<b>Project Title:</b> FyreCOLLAR Conduit and Premium Hinged				<b>Fire resistance level:</b>	<b>Drawn By:</b> SM	<small>NOTE: ALL DIMENSIONS ARE IN MILLIMETRES (mm)</small>			
<b>Drawing No. :</b> 1	<b>Sheet:</b> 1 of 3	<b>Date:</b> 25/11/2020	<b>Scale:</b> NTS	<b>Based on Report No.:</b>	<b>Checked By:</b> JH	<input type="checkbox"/> STANDARD DRAWING	 <p><b>TRAFALGAR</b> <b>FIRE</b></p> <p><small>Trafalgar Head Office: PO BOX 545 Chester Hill NSW 2162 T: 1800 888 714 F: 1800 201 500 E: technical@tgroup.com.au W: www.tfire.com.au</small></p>		
						<input type="checkbox"/> PROJECT DRAWING			

### 4. Concrete Floors



### 5. Cast-in Conduits



**Drawing Name:** Floor Installations

**Project Title:** FyreCOLLAR Conduit and Premium Retrofit

**Drawing No. :**  
2

**Sheet:**  
2 of 3

**Date:**  
25/11/2020

**Scale:**  
NTS

**Test Standard:**  
AS1530.4

**Fire resistance level:**

**Based on Report No.:**

**Codes:**

**Drawn By:**  
SM

**Checked By:**  
JH

**Revision:**

STANDARD DRAWING  
 PROJECT DRAWING

**Date:**

**No.:**

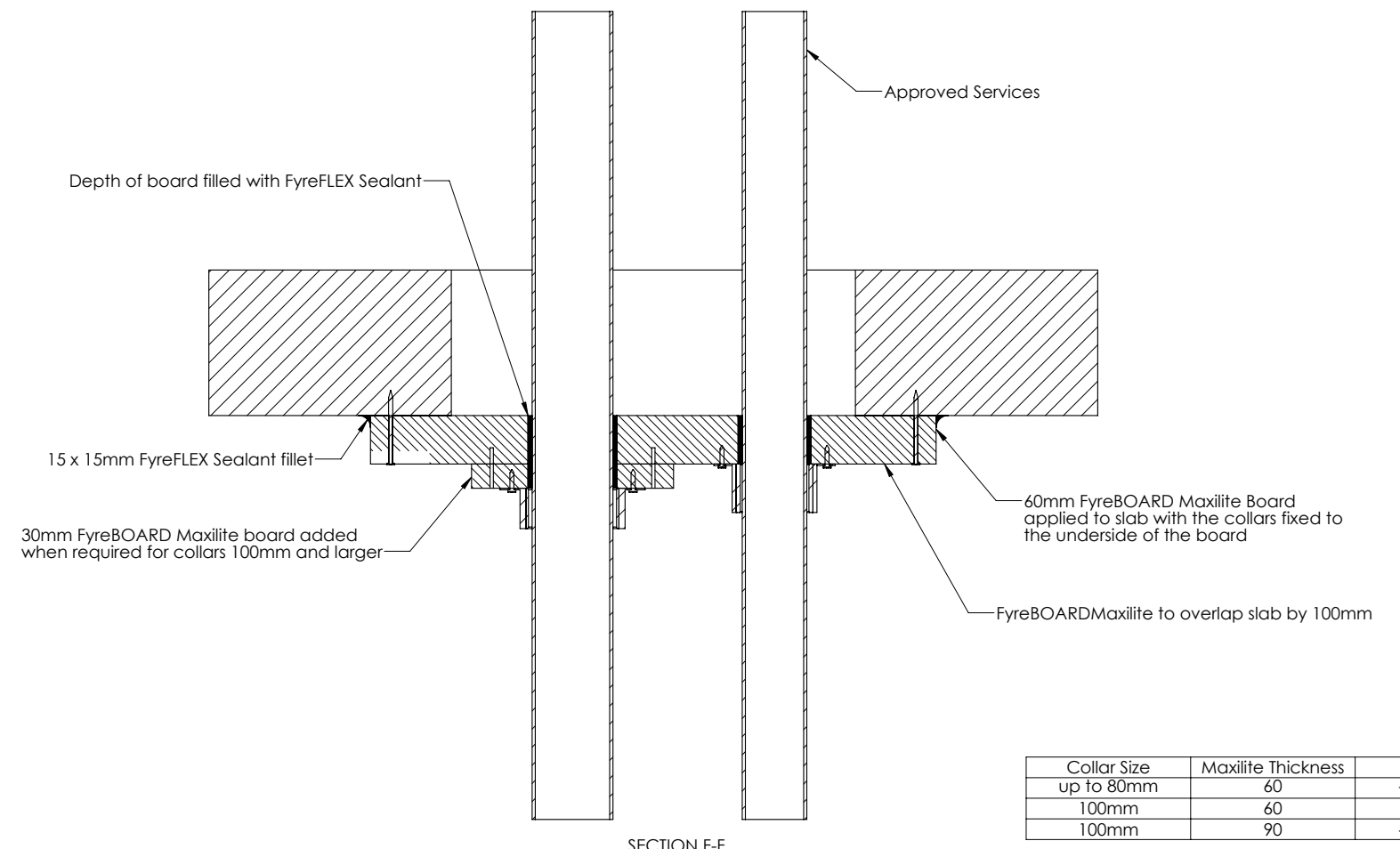
**NOTICE:**

NOTE: ALL DIMENSIONS ARE IN MILLIMETRES (mm)



**Trafalgar Head Office:**  
 PO BOX 545  
 Chester Hill NSW 2162  
 T: 1800 888 714  
 F: 1800 201 500  
 E: technical@tgroup.com.au  
 W: www.tfire.com.au

### 6. FyreBOARD Maxilite - Oversized Openings

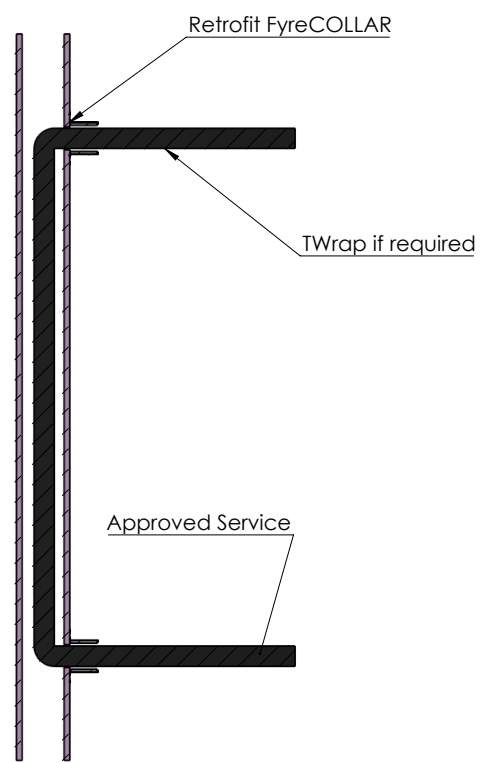


Collar Size	Maxilite Thickness	FRL
up to 80mm	60	-/120/120
100mm	60	-/90/90
100mm	90	-/120/120

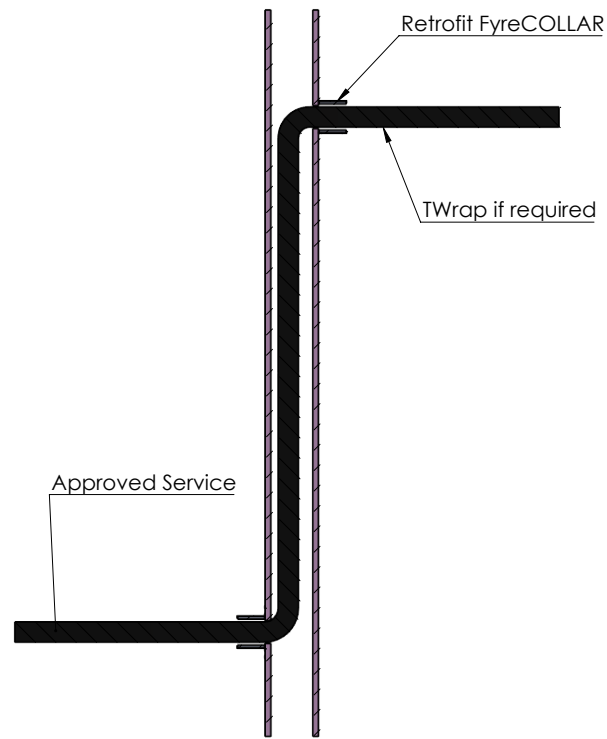
Note: This applies to wall penetrations also, however FyreCOLLAR must be applied to both sides of a wall.

<b>Drawing Name:</b> FyreBOARD Maxilite				<b>Test Standard:</b> AS1530.4	<b>Codes:</b>	<b>Revision:</b>	<b>Date:</b>	<b>No.:</b> NOTICE:
<b>Project Title:</b> FyreCOLLAR Retro-fit				<b>Fire resistance level:</b>	<b>Drawn By:</b> SM	<small>NOTE: ALL DIMENSIONS ARE IN MILLIMETRES (mm).</small> <b>Trafalgar Head Office:</b> PO BOX 545 Chester Hill NSW 2162 T: 1800 888 714 F: 1800 201 500 E: technical@group.com.au W: www.tfire.com.au		
<b>Drawing No. :</b> 3	<b>Sheet:</b> 3 of 3	<b>Date:</b> 5/08/2021	<b>Scale:</b> NTS	<b>Based on Report No.:</b>	<b>Checked By:</b> JH			


Click here to go back to Contents

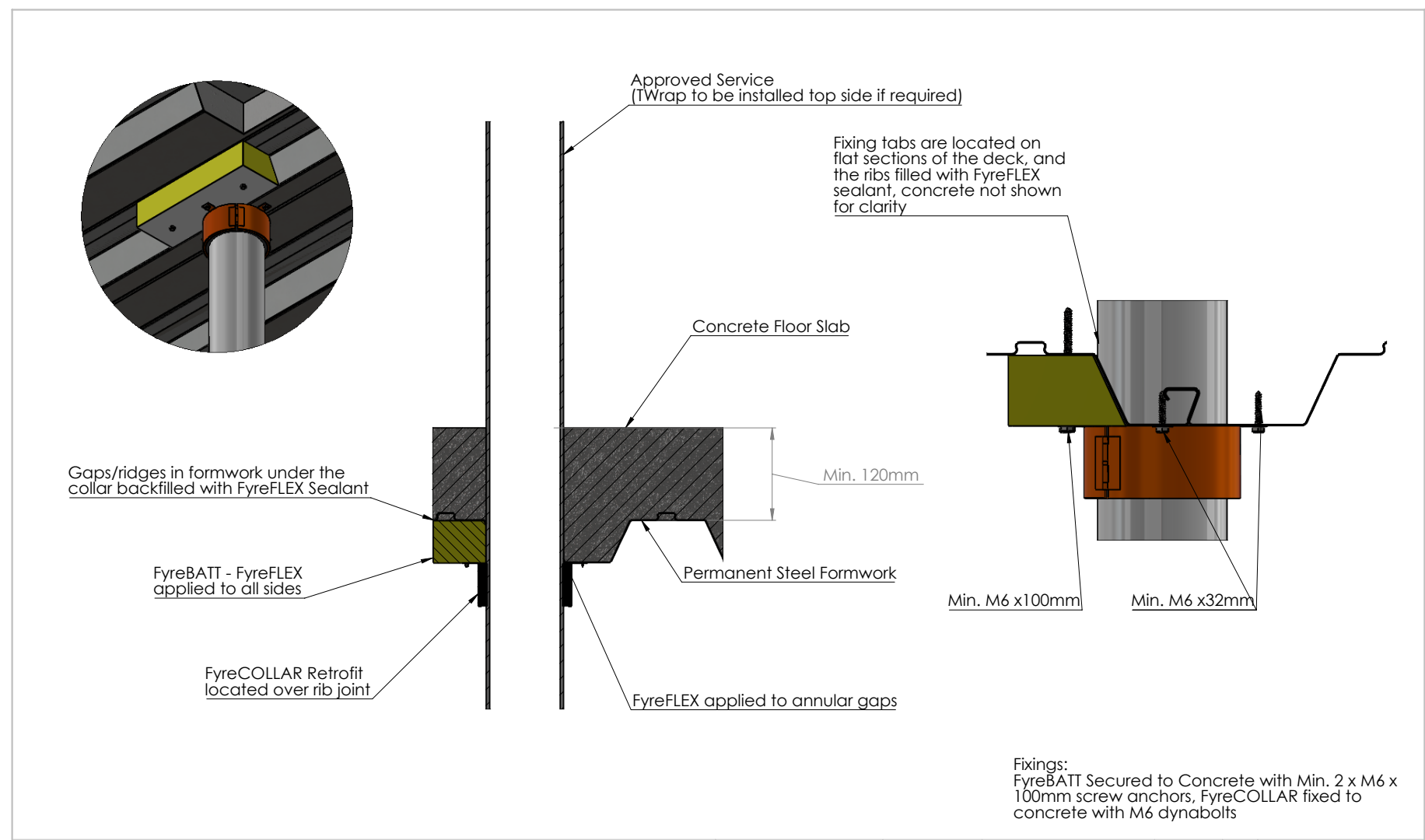



'C' Configuration



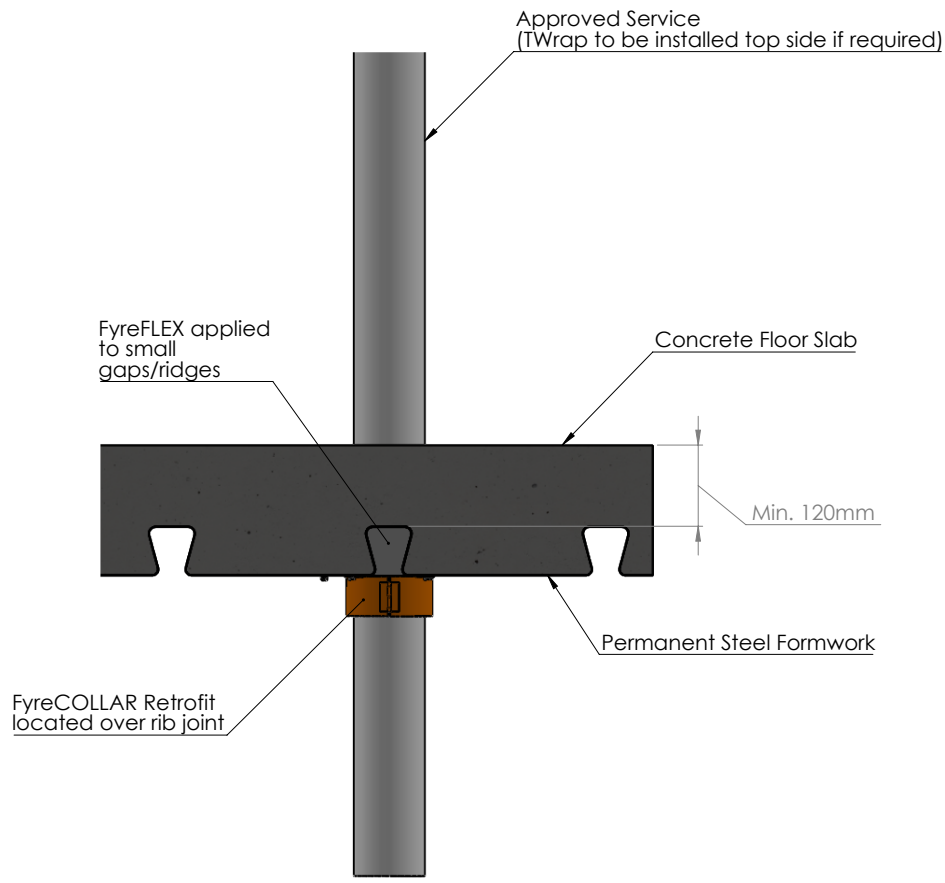
'S' Configuration


<b>Drawing Name:</b> Half-Wall Penetrations				<b>Test Standard:</b> AS1530.4	<b>Codes:</b>	<b>Revision:</b>	<b>Date:</b>	<b>No.:</b>	<b>NOTICE:</b>
<b>Project Title:</b> FC11190 Drawings				<b>Fire resistance level:</b>	<b>Drawn By:</b> DP	<small>NOTE: ALL DIMENSIONS ARE IN MILLIMETRES (mm).</small>			
<b>Drawing No. :</b> 1	<b>Sheet:</b> 1 of 1	<b>Date:</b> 27/11/2023	<b>Scale:</b> NTS	<b>Based on Report No.:</b>	<b>Checked By:</b> JH	<input type="checkbox"/> STANDARD DRAWING	 <p><small>Trafalgar Head Office: PO BOX 545 Chester Hill NSW 2162 T: 1800 888 714 F: 1800 201 500 E: technical@tgroup.com.au W: www.tfire.com.au</small></p>		
						<input type="checkbox"/> PROJECT DRAWING			



<b>Drawing Name:</b> Permanent Formwork Penetration				<b>Test Standard:</b> AS1530.4	<b>Codes:</b>	<b>Revision:</b>	<b>Date:</b>	<b>No.:</b>	<b>NOTICE:</b>
<b>Project Title:</b> FC11190 Drawings				<b>Fire resistance level:</b>	<b>Drawn By:</b> DP	<small>NOTE: ALL DIMENSIONS ARE IN MILLIMETRES (mm)</small>			
<b>Drawing No. :</b> 1	<b>Sheet:</b> 1 of 1	<b>Date:</b> 31/05/2024	<b>Scale:</b> NTS	<b>Based on Report No.:</b>	<b>Checked By:</b> JH	<input type="checkbox"/> STANDARD DRAWING	 <p><small>Trafalgar Head Office: PO BOX 545 Chester Hill NSW 2162 T: 1800 888 714 F: 1800 201 500 E: technical@group.com.au W: www.tfire.com.au</small></p>		
						<input type="checkbox"/> PROJECT DRAWING			

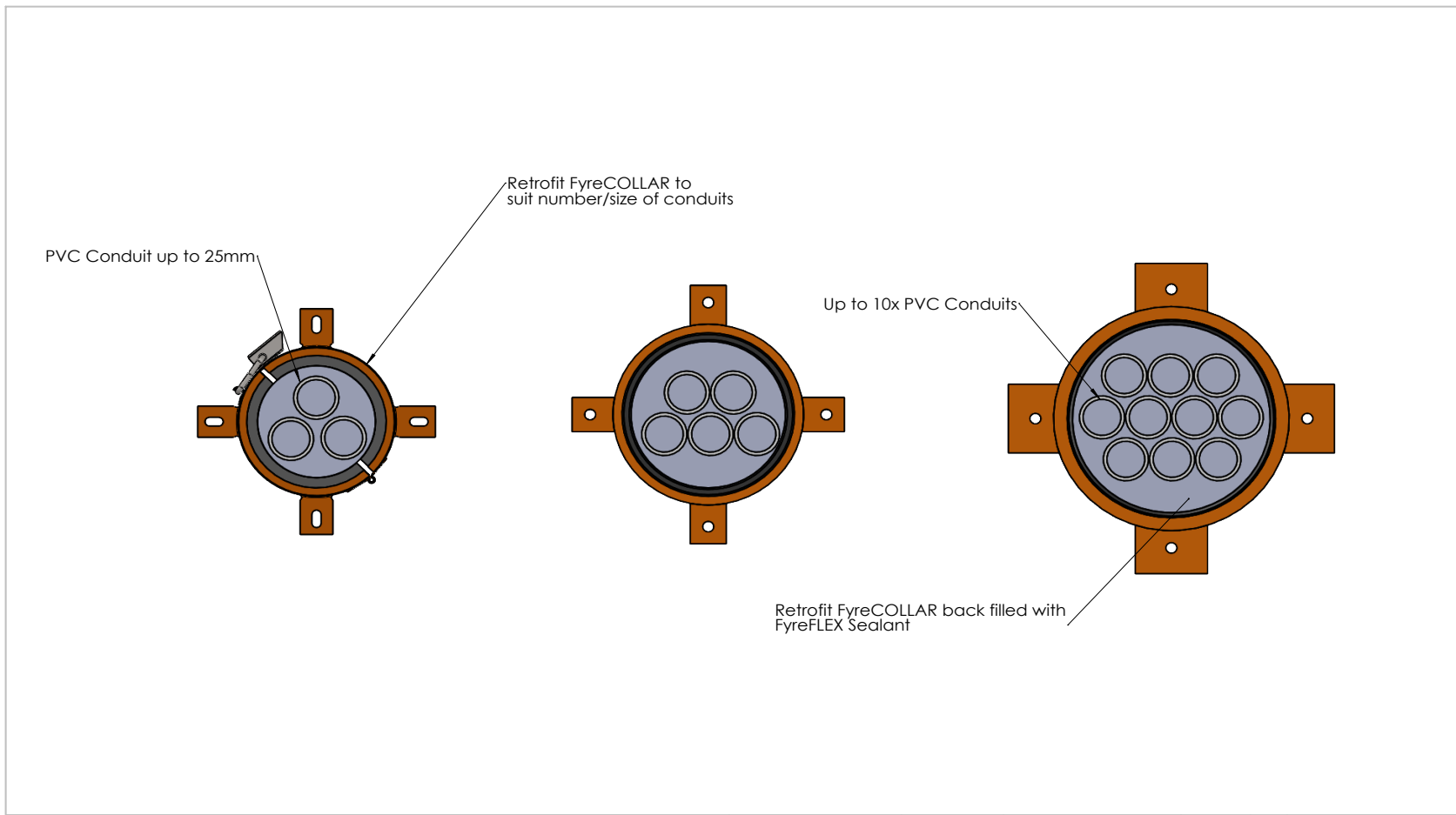
Click here to go back to Contents




<b>Drawing Name:</b> Permanent Formwork 2				<b>Test Standard:</b> AS1530.4	<b>Codes:</b>	<b>Revision:</b>	<b>Date:</b>	<b>No.:</b>	<b>NOTICE:</b>
<b>Project Title:</b> Permanent Formwork Drawing				<b>Fire resistance level:</b>	<b>Drawn By:</b> SM	<small>NOTE: ALL DIMENSIONS ARE IN MILLIMETRES (mm).</small>			
<b>Drawing No. :</b> 2	<b>Sheet:</b> 2 of 2	<b>Date:</b> 8/23/2024	<b>Scale:</b> NTS	<b>Based on Report No.:</b>	<b>Checked By:</b> JH	<input type="checkbox"/> STANDARD DRAWING	 <p><small>Trafalgar Head Office: PO BOX 545 Chester Hill NSW 2162 T: 1800 888 714 F: 1800 201 500 E: technical@tgroup.com.au W: www.tfire.com.au</small></p>		
						<input type="checkbox"/> PROJECT DRAWING			

Click here to go back to Contents

Conduit	Collar Size	Concrete Floors min. 150mm thick
Up to ten PVC conduits (Rigid, Flexi, and/or HD) up to 25mm diameter each	Collar size to suit bundle size	-/180/180



<b>Drawing Name:</b> Up to 10x Conduits				<b>Test Standard:</b> AS1530.4	<b>Codes:</b>	<b>Revision:</b>	<b>Date:</b>	<b>No.:</b>	<b>NOTICE:</b>
<b>Project Title:</b> FC11190 Drawings				<b>Fire resistance level:</b>	<b>Drawn By:</b> DP	<small>NOTE: ALL DIMENSIONS ARE IN MILLIMETRES (mm).</small>			
<b>Drawing No. :</b> 1	<b>Sheet:</b> 1 of 1	<b>Date:</b> 11/22/2023	<b>Scale:</b> NTS	<b>Based on Report No.:</b>	<b>Checked By:</b> JH	<input type="checkbox"/> STANDARD DRAWING	 <small>Trafalgar Head Office: PO BOX 545 Chester Hill NSW 2162 T: 1800 888 714 F: 1800 201 500 E: technical@tgroup.com.au W: www.fire.com.au</small>		
						<input type="checkbox"/> PROJECT DRAWING			