

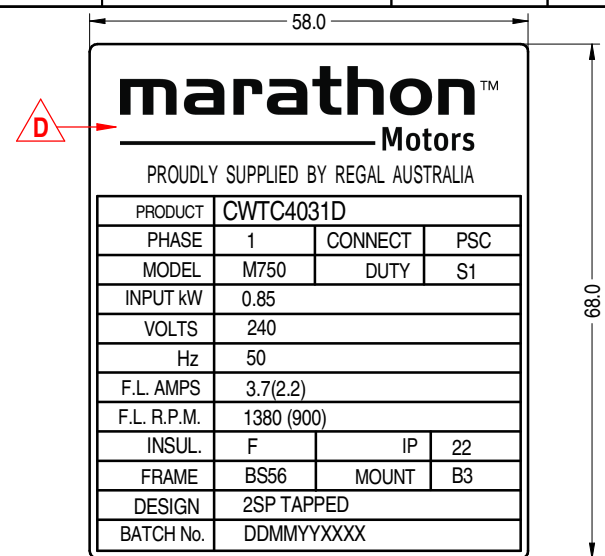
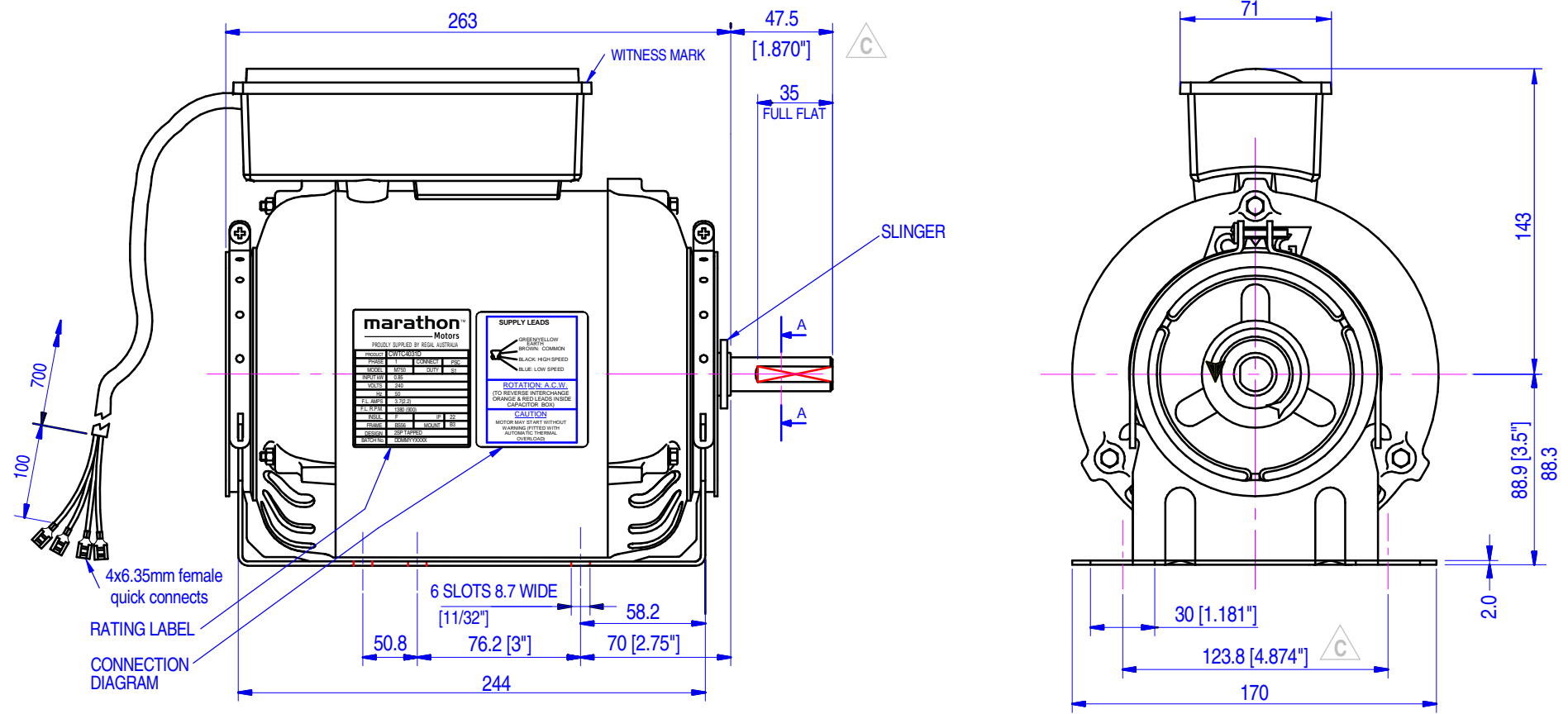
MOTOR SPECIFICATION

FINAL INSPECTED MOTORS MUST COMPLY WITH ELECTRIC MOTOR VIBRATION SPECIFICATION (ES049)

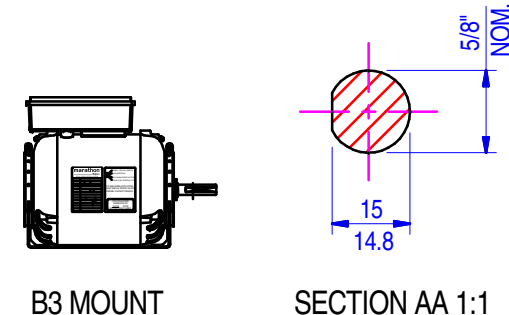
THIRD ANGLE PROJECTION

809B54RTB-A11S

Q.R. No.	Y004999	CUSTOMER NO.	CWTC4031D
CUSTOMER	Regalbeloit		
MOTOR RATING	VOLTS	240	Hz 50 Ph 1 Duty S1 IP 22
	RPM.	1380(900)	3.7(2.2) AMPS
	NOM. OUTPUT	570 WATTS (INPUT 0.85 kW)	
ROTATION	ANTI-CLOCKWISE AT DRIVE END		
CAPACITOR	START	-----	μF/V RUN 14 / 450 μF/V
ENCLOSURE	DRIPPROOF		
MOTOR TYPE	PSC	INSULATION CLASS	F
THERMAL PROTECTION	AUTO RESET OVERLOAD		
APPLICATION	GERNERAL PURPOSE - SHAFT HORIZONTAL		
BEARING D.E.	6204 DDU CM	LUBRICATION	LONG LIFE, WIDE RANGE
BEARING N.D.E.	6203 DDU CM		
SUPPLY LEAD	4 CORE FLEX 800 mm ± 30		
EARTH PROVISION	IN CAP BOX		
BASIC BUILD SPECIFICATION	XXX	PAINT/ COLOUR	BLACK PAINT
PERFORMANCE SPECIFICATION	SP9B017-02		
CONNECTION DIAGRAM	391-303-01	RATING LABEL	AS SHOWN



- NOTE:
1. DRIVE END: FIT WAVE WASHER
 2. OPPOSITE D.E. : NO WAVE WASHER, DO NOT LOCK
 3. FIT PLASTIC FAN WITH 22 mm METAL INSERT USING BUSH, FIT FAN WASHER
 4. USE DRIPPROOF ENDSHIELDS MACHINED TO TAKE RUBBER MOUNTING RING.
 5. DRIVE END ENDSHIELD HAS SLOTS ALL THE WAY ROUND
 6. PAINT INSIDE OF STATOR WITH OXIDE PRIMER
 7. ASSEMBLY HOLDING CLAMPS USING 30mm x 3/16"
 8. PLACE MOTOR IN CRADLE, COMPLETE ASSEMBLY
 9. FIT BLACK PLASTIC CAP BOX



SPECIAL REQUIREMENTS:
1. CAPACITOR PROTECTION P0 CLASS B

UNLESS OTHERWISE SPECIFIED : DIMENSIONS ARE IN MM. TOLERANCES	DECIMALS	ANGULAR
	.X ± 1.0	± 30'
	.XX ± 0.1	
	THIS DRAWING REMAINS THE PROPERTY OF FASCO MOTORS AND MAY NOT BE USED, COPIED OR ISSUED WITHOUT WRITTEN PERMISSION FROM FASCO MOTORS	
	SCALE N.T.S.	

MOTOR WEIGHT	14.4 kg.	
DRAWN	muntana	07/07/2012
CHECKED	Pipat	18/10/2018
RELEASED	Kanapote	23/11/2018
SCALE	N.T.S.	

FASCO THAILAND
29/7-8 MOO 3, BANGKRUAY - SAINOI Rd.,
BANGKRANG, MUANG NONTABURI DISTRICT,
NONTABURI 11000 THAILAND

FRAME	MOTOR	
STATUS	CWTC4031D	
SHEET	DWG. NO.	REVISION
A3	809B54RTB-A11S	D

MIC1804200 By: Muntana Date:10/10/2018 MIC D:Remove CMG branding on CW motors nameplate and Note: motor packing switch to Marathon branding.