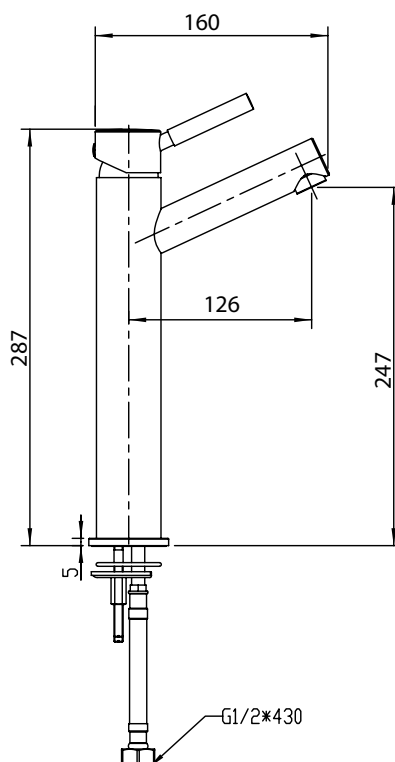


# MIZU

## DRIFT EXTENDED BASIN MIXER 5 STAR



Dimensions are nominal measurements only.

### SPECIFICATIONS

<b>Recommended use</b>	Domestic, hotel and commercial
<b>Colour availability</b>	White
<b>Pressure rating</b>	Maximum continuous operating pressure 1000kPa.  Note: As per AS/NZS3500 pressure must be limited to 500kPa on any new home, extension or renovation.  Note: For best performance and longer life we recommend an operating pressure between 150-500 kPa
<b>Temperature rating</b>	Maximum continuous working temperature 65°
<b>WELS</b>	Stars 5 Flow Rate 6 L/min
<b>Suitable Hot Water Units</b>	Storage tank: Yes Continuous Flow: Yes Gravity Feed: Not recommended
<b>Standards</b>	AS/NZS 3718, 6400



To see the complete Mizu range go to [www.reece.com.au/bathrooms](http://www.reece.com.au/bathrooms)

### CLEANING RECOMMENDATIONS

We recommend the use of soapy water or approved cleaners.

This product should not be cleaned with abrasive materials.

Damage caused by any improper treatment is not covered by the product warranty - refer to Warranty Conditions.



**Disclaimer:** Products in this specification manual must by regulation be installed by licensed and registered trade people. The manufacturer/distributor reserves the right to vary specifications or delete models from their range without prior notification. Dimensions are nominal measurements only. Dimensions and set-outs listed are correct at time of publication however the manufacturer/distributor takes no responsibility for printing errors.

Tech Page Version 1

m i z u **reece**

# MIZU

## DRIFT EXTENDED BASIN MIXER 5 STAR

### INSTALLATION INSTRUCTIONS

#### Note:

Mixer must be installed by a licenced plumber

#### Important

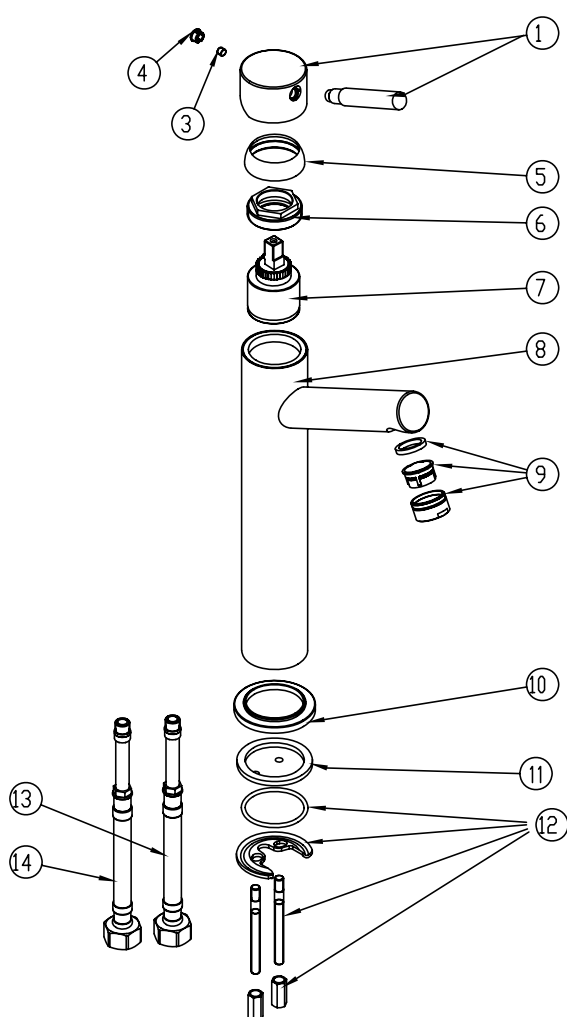
Your mixer comes to you already factory assembled and tested. We do not recommend the dismantling of any internal part of the mixer. The mixers are factory tested and sealed so as to give the best performance.

1. Please flush out new pipe work prior to connecting the new mixer.
2. All mixers should be installed with isolating stop cocks (Arco).
3. This tap is suitable for high pressure applications where both hot and cold water supply pressures are at 150kPa or above.
4. Place the base washer into position (11).
5. Fit the tap body (8) into the basin hole making sure first that the flexible connectors (13,14) are firmly tightened into base of the body.

6. Do not use teflon tape on threads.
7. From underneath apply your washer (12) prior to positioning the horse shoe plate.
8. Lock the mixer into position by tightening the lock nut.

#### Servicing - Replacement of cartridge

1. Remove cap (4) and unscrew grub screw (3) using allen key.
2. Lift off handle and remove cartridge dome (5), unscrew brass locking nut (6) and lift out cartridge (7).
3. Replace cartridge (7), replace brass locking nut (6) and replace handle. Tighten grub screw (3) and push in indicator cap (4).



#### Exploded View

Item	Description	Product Code
1-4.	Basin Mixer Handle Complete	9503175
5.	Cartridge Dome	
6.	Cartridge Lock Nut	
7.	Cartridge	9503176
8.	Mixer Body	
9.	Aerator Complete	9503177
10.	Dress Ring	
11.	Sealing Washer	
12.	Basin Mixer Fixing Fit	9503179
13.	Flexible Hose (Hot)	9503180
14.	Flexible Hose (Cold)	9503181

Plumbers, please ensure a copy of the installation instructions is left with the end user for future reference