

WALL MOUNTED AIR CONDITIONER

Remote Controller Manual

KS Series

KS09 | KS12 | KS18
KS24 | KS28



kaden°TM

Table of Contents

1. Remote controller specifications	4
2. Function buttons	4
3. Handling the remote controller	5
4. Remote LCD screen indicators	6
5. How to use the basic functions	7
6. How to use the advanced functions	13

Important note

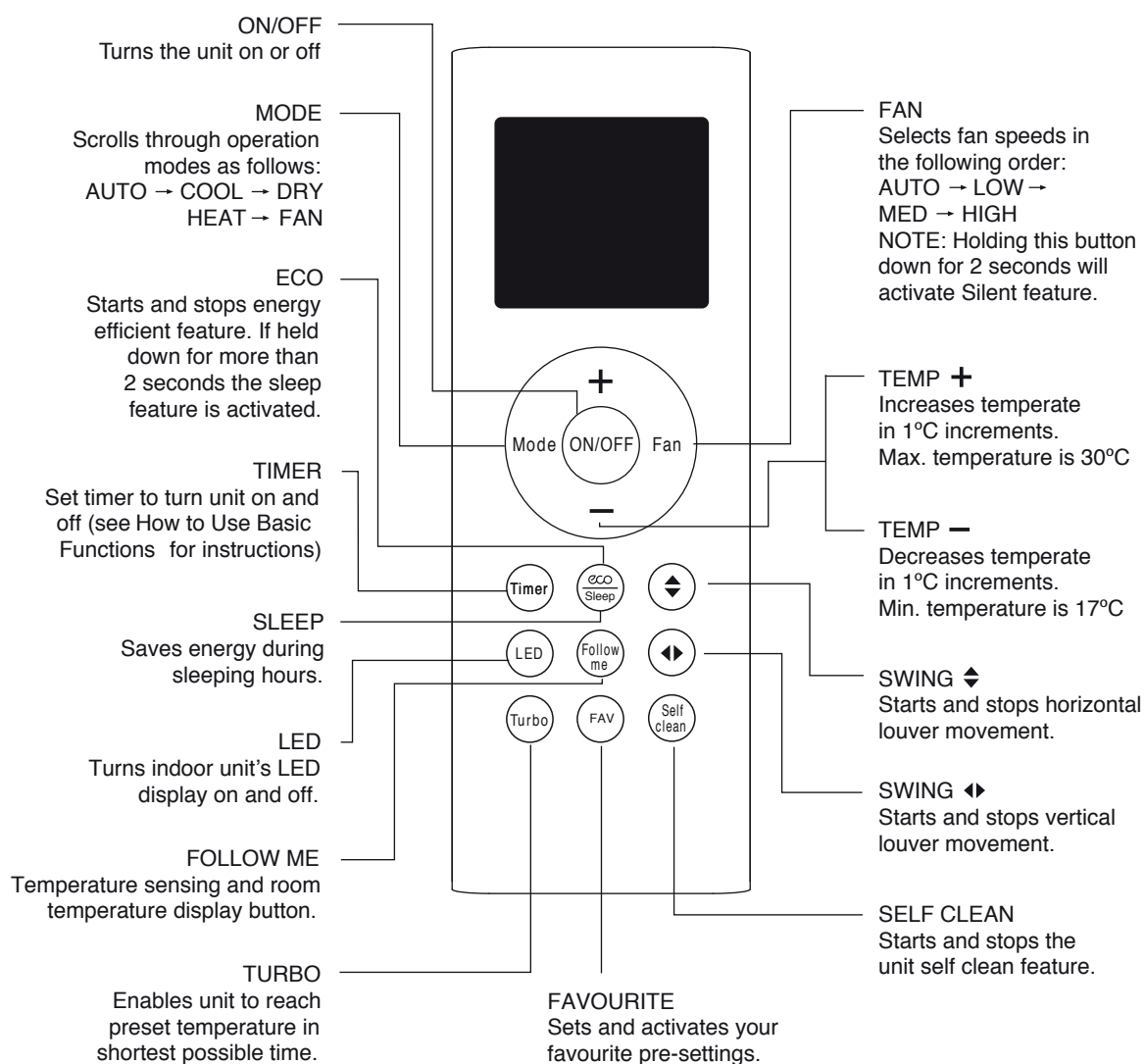
Read this manual carefully before installing or operating your new air conditioning unit. Make sure to save this manual for future reference.

1. Remote controller Specifications

Model	RG66A1/BGEF
Rated Voltage	3.0V (Dry batteries R03/LR03×2)
Signal Receiving Range	8m
Environment	-5°C~60°C

2. Function buttons

Before you begin using your new air conditioner, make sure to familiarise yourself with its remote control. The following is a brief introduction to the remote control itself. For instructions on how to operate your air conditioner, refer to the **How to Use The Basic/Advance Functions** section of this manual.



3. Handling the remote controller

Not sure what a function does?

Refer to the **How to Use Basic Functions** and **How to Use Advanced Functions** sections of this manual for a detailed description of how to use your air conditioner.

Inserting and replacing batteries

Your air conditioning unit comes with two AAA batteries. Put the batteries in the remote control before use:

1. Remove the back cover from the remote control, exposing the battery compartment.
2. Insert the batteries, paying attention to match up the (+) and (-) ends of the batteries with the symbols inside the battery compartment.
3. Install the back cover.

Tips for using remote control

- The remote control must be used within 8 meters of the unit.
- The unit will beep when remote signal is received.
- Curtains, other materials and direct sunlight can interfere with the infrared signal receiver.
- Remove batteries if the remote control will not be used more than 2 months.

Installing remote control holder

The remote controller can be attached to a wall or stand by using a remote controller holder.

1. Before installing the remote controller, check that the air conditioner receives the signals properly.
2. Install the holder with two screws.
3. Put the remote controller in the holder.

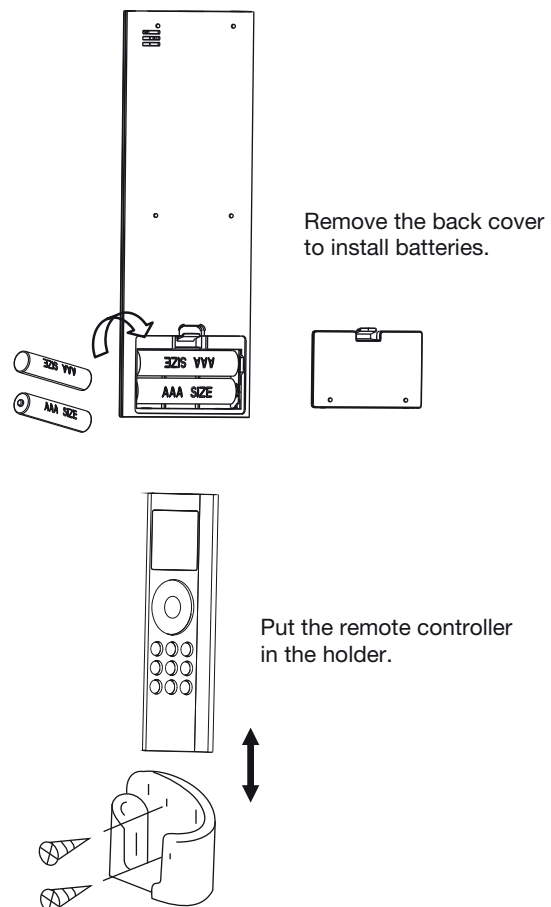
! Battery notes

For optimum product performance:

- **Do not** mix old and new batteries, or batteries of different types.
- **Do not** leave batteries in the remote control if you don't plan on using the device for more than 2 months.

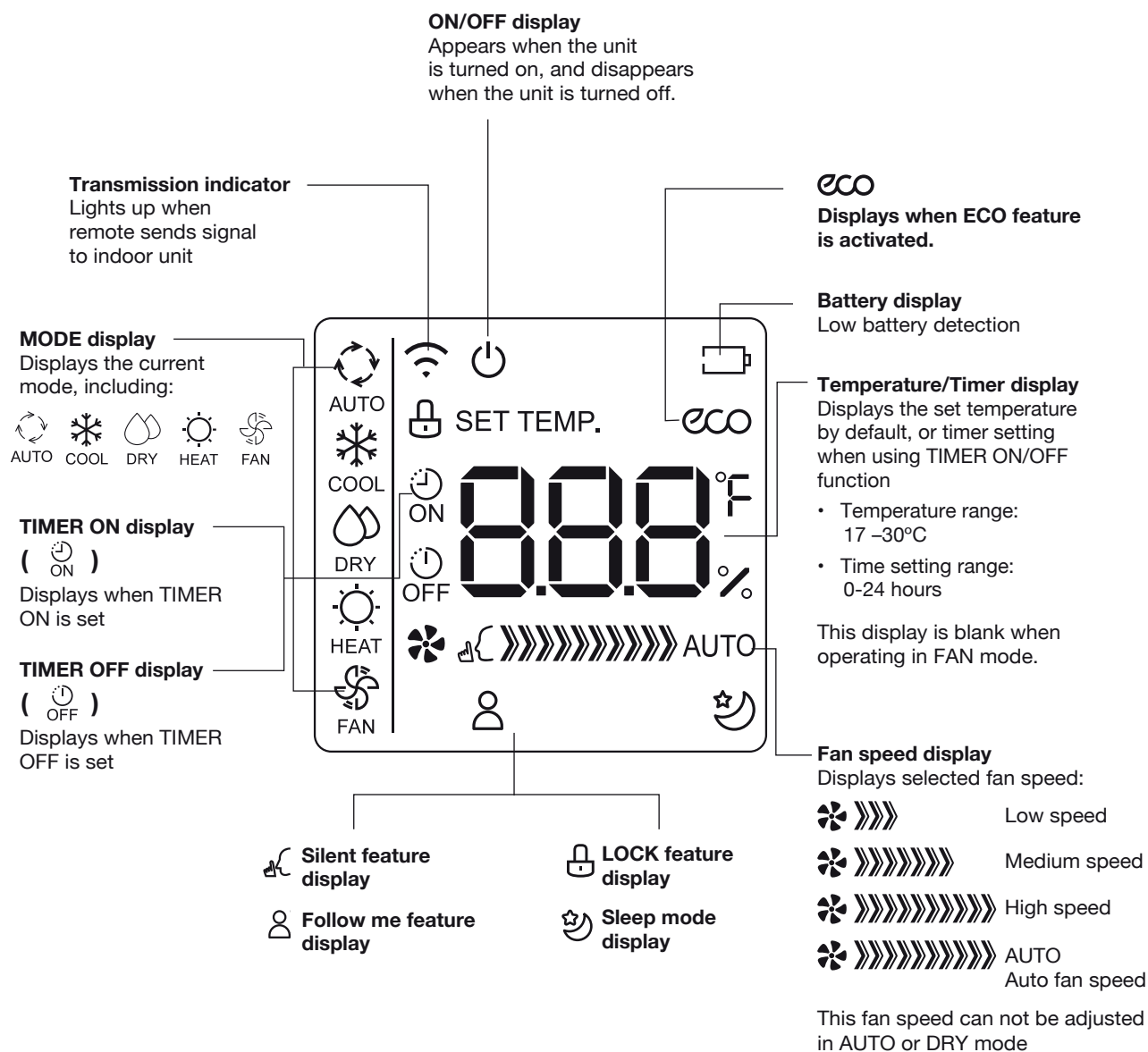
! Battery disposal

Do not dispose of batteries as unsorted municipal waste. Refer to local laws for proper disposal of batteries.



4. Remote LCD screen indicators

Information is displayed when the remote controller is powered up.



5. How to use the basic functions

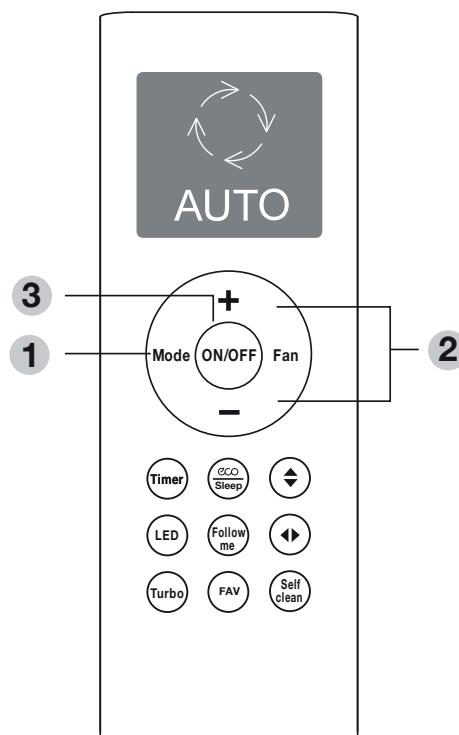
AUTO operation

In **AUTO** mode, the unit will automatically select the **COOL**, **FAN**, **HEAT** or **DRY** mode based on the set temperature.

1. Press the **MODE** button to select **AUTO** mode.
2. Set your desired temperature using the **Temp +** or **Temp -** button.
3. Press the **ON/OFF** button to start the unit.

Note

FAN SPEED can't be set in Auto mode.

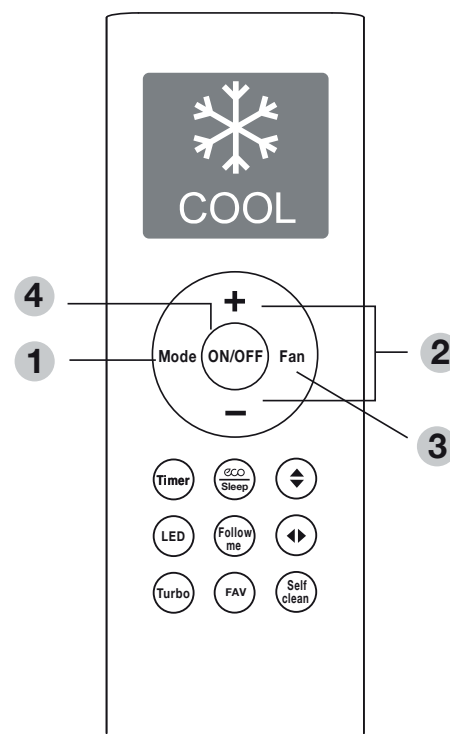


COOL operation

1. Press the **MODE** button to select **COOL** mode.
2. Set your desired temperature using the **Temp +** or **Temp -** button.
3. Press the **FAN** button to select the fan speed.
4. Press the **ON/OFF** button to start the unit.

Setting temperature

The operating temperature range for units is 17-30°C. You can increase or decrease the set temperature in 1°C increments.

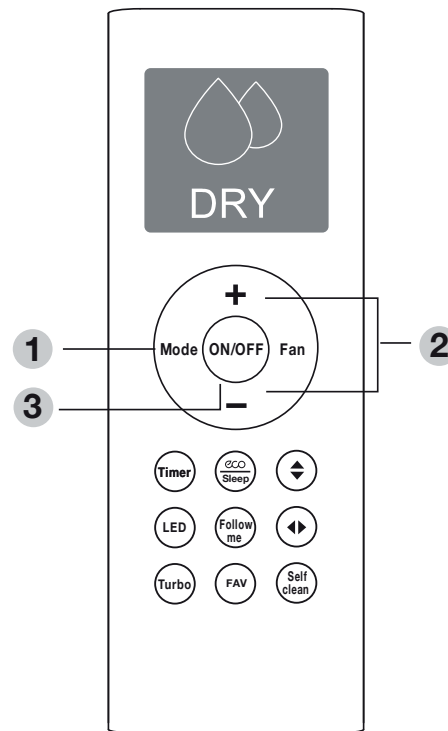


DRY operation (dehumidifying)

1. Press the **MODE** button to select **DRY** mode.
2. Set your desired temperature using the **Temp +** or **Temp -** button.
3. Press the **ON/OFF** button to start the unit.

Note

FAN SPEED can't be changed in **DRY** mode.

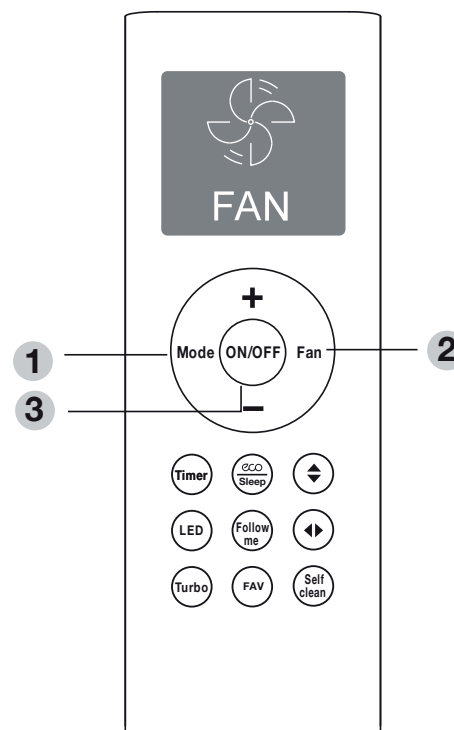


FAN operation

1. Press the **MODE** button to select **FAN** mode.
2. Press the **FAN** button to select the fan speed.
3. Press the **ON/OFF** button to start the unit.

Note

You can't set temperature in FAN mode. As a result, your remote control's LCD screen will not display temperature.

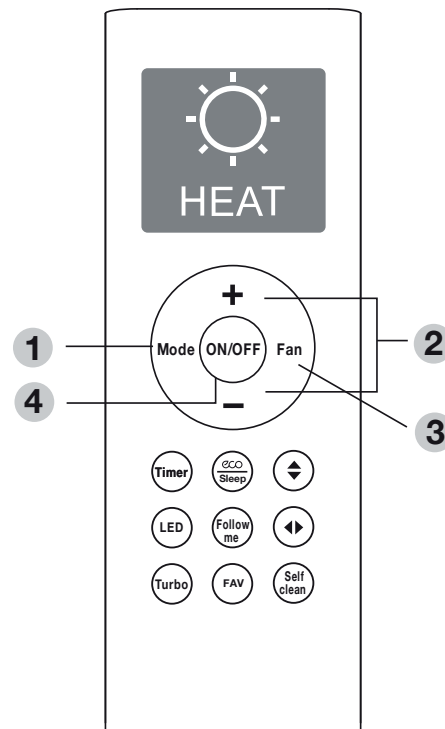


HEAT operation

1. Press the **MODE** button to select **HEAT** mode.
2. Set your desired temperature using the **Temp +** or **Temp -** button.
3. Press the **FAN** button to select the fan speed.
4. Press the **ON/OFF** button to start the unit.

Note

As outdoor temperature drops, the performance of your unit's HEAT function may be affected. In such instances, we recommend using this air conditioner in conjunction with other heating appliance.



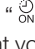
Setting the TIMER function

Your air conditioning unit has two timer-related functions:

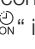
- **TIMER ON** – sets the amount of time after which the unit will automatically turn on.
- **TIMER OFF** – sets the amount of time after which the unit will automatically turn off.

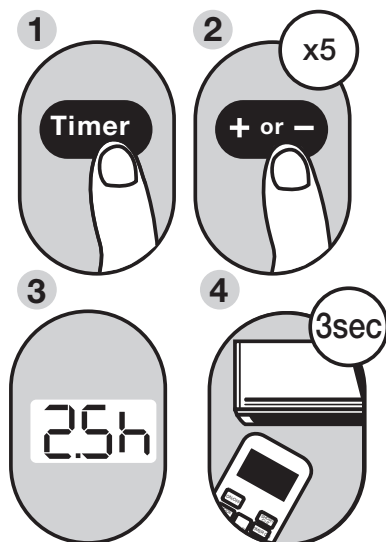
TIMER ON function

The **TIMER ON** function allows you to set a period of time after which the unit will automatically turn on, such as when you come home from work.

1. Press the **Timer** button, the Timer on indicator “” displays and flashes. By default, the last time period that you set and an “h” (indicating hours) will appear on the display.

Note: This number indicates the amount of time after the current time that you want the unit to turn on. For example, if you set TIMER ON for 2.5 hours, “2.5h” will appear on the screen, and the unit will turn on after 2.5 hours.

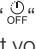
2. Press the **Temp +** or **Temp –** button repeatedly to set the time when you want the unit to turn on.
3. Wait 3 seconds, then the TIMER ON function will be activated. The digital display on your remote control will then return to the temperature display. The “” indicator remains on and this function is activated.




Example: Setting unit to turn on after 2.5 hours

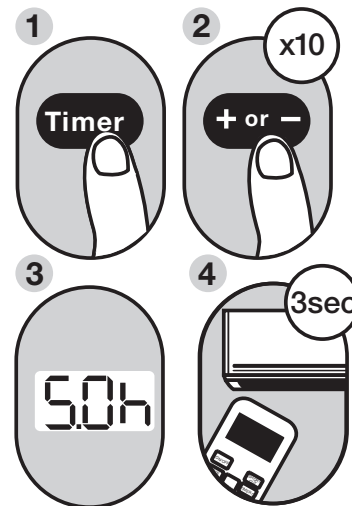
TIMER OFF function

The **TIMER OFF** function allows you to set a period of time after which the unit will automatically turn off, such as when you wake up.

1. Press the **Timer** button, the Timer off indicator “” displays and flashes. By default, the last time period that you set and an “h” (indicating hours) will appear on the display.

Note: This number indicates the amount of time after the current time that you want the unit to turn off. For example, if you set TIMER OFF for 5 hours, “5.0h” will appear on the screen, and the unit will turn off after 5 hours.

2. Press the **Temp +** or **Temp –** button repeatedly to set the time when you want the unit to turn off.
3. Wait 3 seconds, then the TIMER OFF function will be activated. The digital display on your remote control will then return to the temperature display. The “” indicator remains on and this function is activated.



Example: Setting unit to turn off after 5 hours

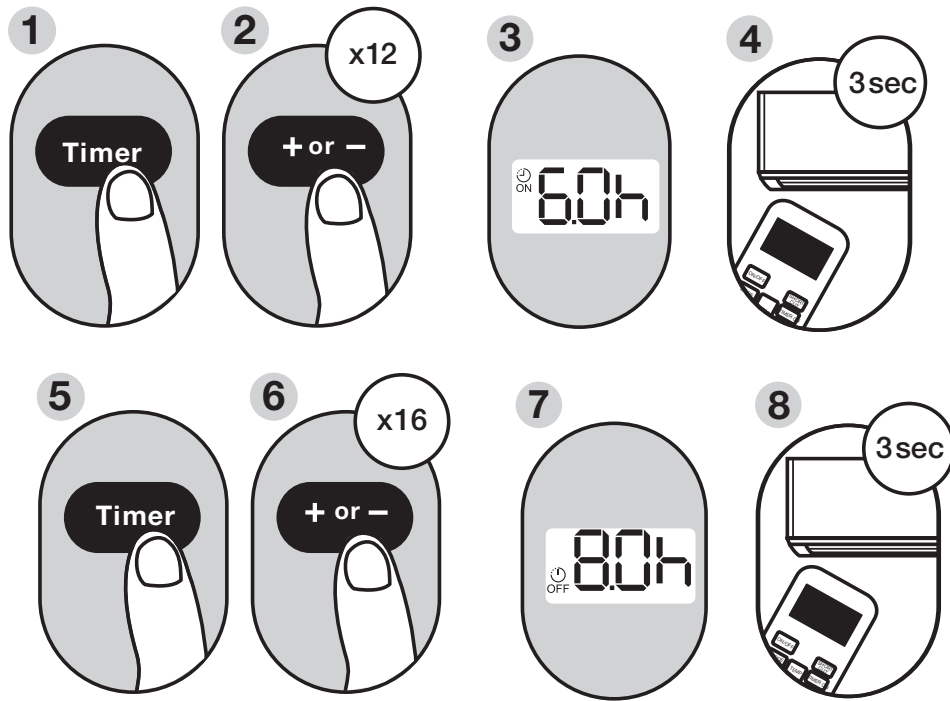
Note

When setting the TIMER ON or TIMER OFF functions, up to 10 hours, the time will increase in 30 minute increments with each press. After 10 hours and up to 24, it will increase in 1 hour increments. The timer will revert to zero after 24 hours. You can turn off either function by setting its timer to “0.0h”.

Setting both TIMER ON and TIMER OFF at the same time

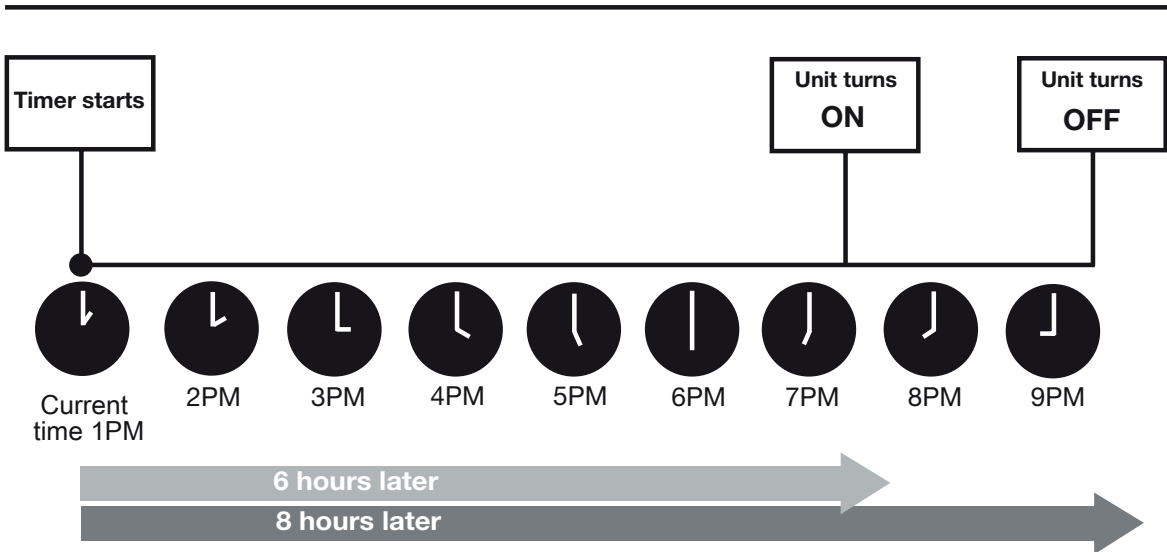
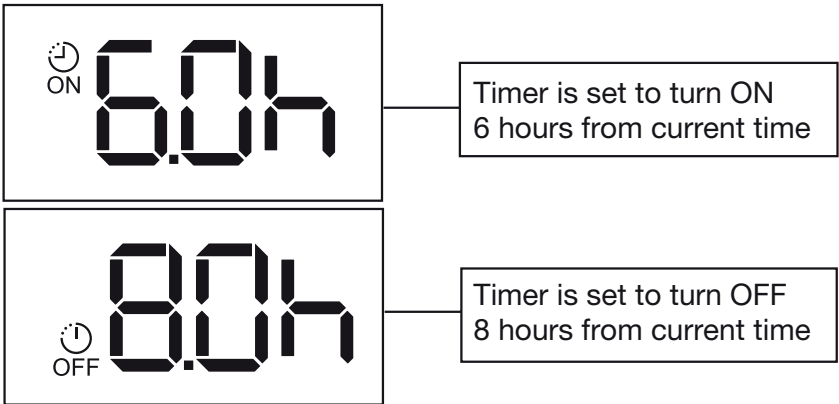
Keep in mind that the time periods you set for both functions refer to hours after the current time. For example, say that the current time is 1:00 PM, and you want the unit to turn on automatically at 7:00 PM. You want it to operate for 2 hours, then automatically turn off at 9:00 PM.

Do the following:



Example: Setting the unit to turn on after 6 hours, operate for 2 hours, then turn off (see figure below)

Your remote display



6. How To Use The Advanced Functions

ECO function

Note

This function is only available under **COOL** mode.

ECO operation

When the **ECO** feature is activated, the air conditioner will operate automatically at 24°C.

The fan speed is Auto.

Note

Pressing the **ON/OFF** button, modifying the mode or adjusting the set temperature to less than 24°C will stop ECO operation.

Under **ECO** operation, the set temperature should be 24°C or higher. It may result in insufficient cooling if you feel uncomfortable, just adjust the temperature to stop it.

SLEEP function

The **SLEEP** function is used to decrease energy use while you sleep (and don't need the same temperature settings to stay comfortable). This function can only be activated via remote control. For detail, see "sleep operation" in "OWNER'S MANUAL".

Note

The SLEEP function is not available in **FAN** or **DRY** mode.

TURBO function

The **TURBO** function makes the unit work extra hard to reach your present temperature in the shortest amount of time possible.

- When you select **TURBO** feature in **COOL/HEAT** mode, the unit will blow cool/hot air with strongest wind setting to jump-start the cooling/heating process.

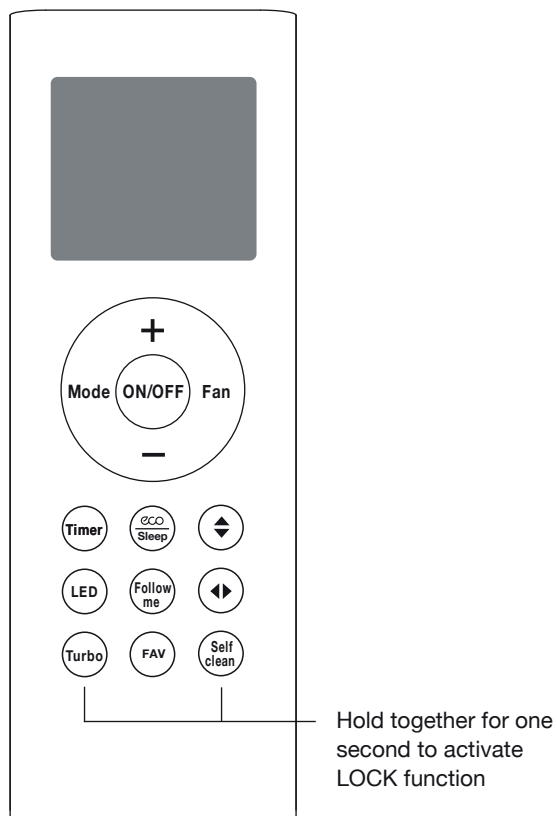
SELF CLEAN function

Airborne bacteria can grow in the moisture that condenses around heat exchanger in the unit. With regular use, most of this moisture is evaporated from the unit. When the self clean feature is activated, your unit will clean itself automatically. After cleaning, unit will turn off automatically.

You can use **self clean** feature as often as you like.

Note

You can only activate this function in **COOL** or **DRY** mode

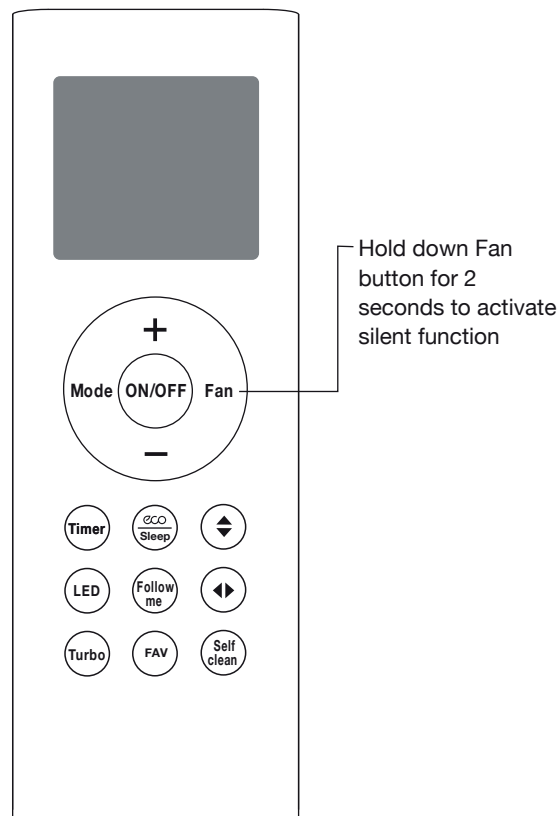


LOCK function

Press Turbo button and self clean button simultaneously for one second to lock or unlock the keyboard.

FOLLOW ME function

The follow me function enables the remote control to measure the temperature at its current location and send this signal to the air conditioner every 3 minute interval. When using AUTO, COOL, or HEAT modes, measuring ambient temperature from the remote control (instead of from the indoor unit itself) will enable the air conditioner to optimise the temperature around you and ensure maximum comfort.



SWING function

Swing ◀▶ Button

Used to stop or start vertical louver movement and set the desired left/right air flow direction. The vertical louver changes 6 degree in angle for each press. If keep pushing more than 2 seconds, the vertical louver auto swing feature is activated.

Swing ◀▶ Button

Used to stop or start horizontal louver movement or set the desired up/down air flow direction. The louver changes 6 degree in angle for each press. If keep pushing more than 2 seconds, the louver will swing up and down automatically.

Silent function

Hold down **FAN** button for 2 seconds to activate /cancel **Silent** mode. Due to low frequency operation of compressor, it may result in insufficient cooling and heating capacity.

Favourite Function

- Used to restore the current settings or resume previous settings.
- Push this button when remote controller is on, the system will automatically revert back to the previous settings including operating mode, setting temperature, fan speed level and sleep feature (if activated).
- If pushing more than 2 seconds, the system will automatically restore the current operation settings including operating mode, setting temperature, fan speed level and sleep feature (if activated).

kaden°