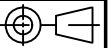


NOTE : FASCO AUSTRALIA IS HAPPY TO PROVIDE TECHNICAL ASSISTANCE TO OUR CUSTOMERS IN MANY AREAS. HOWEVER, SINCE FASCO AUSTRALIA IS NOT AWARE OF ALL DATA CONCERNING THE USE AND APPLICATION OF THIS MOTOR, THE SUITABILITY OF THE MOTOR FOR THE APPLICATION MUST BE DETERMINED BY AND IS THE RESPONSIBILITY OF THE CUSTOMER.



MOTOR SPECIFICATION

CUSTOMER	-----			
CUSTOMER P/N	-----			
QR No.	-----	CAPACITOR	uf / V	
POWER OUTPUT	7.5 W	START	-----	
MOTOR TYPE	S/POLE	RUN	-----	
SUPPLY	VOLTS	HERTZ	PHASE	POLES
	240	50	1	2
ENCLOSURE	CLIP ON BOBBIN			
SPEED (RPM) AT RATED OUTPUT	2000±100	WINDING TYPE	SINGLE SP.	
ROTATION	ANTI-CLOCKWISE			
INSULATION CLASS	B	DUTY	AOM	
THERMAL PROTECTION	ZP			
RATED CURRENT	0.3A			
APPLICATION	REFRIGERATION MOTOR			
MOUNTING	BOBBIN & SCREWS			
BEARING & LUBRICATION	626ZZ 140°C GREASE			
SUPPLY LEAD	COLOUR	BLACK		
	<input checked="" type="checkbox"/> MULTI STRAND	LENGTH	AS NOTED	
	<input type="checkbox"/> SINGLE CORE	TERMINALS	AS SHOWN	
		Q.C. HOUSING	-----	
EARTH PROVISION	-----			
BASIC BUILD SPECIFICATION	-----			
PERFORMANCE SPECIFICATION	SPM53016-01			
SHAFT MATERIAL	MILD STEEL			
CONNECTION DIAGRAM	-----	PAINT SPEC	CLEAR VARNISH	

PACKAGING SPECIAL REQUIREMENTS

20 - MOTORS PER BOX
ADDITIONAL PROTECTION :-
 CORROSION INHIBITING PAPER IN EACH BOX
 SHAFT COATED WITH RUST INHIBITOR

PALLET AND BOX LABELS TO HAVE:-

FASCO NUMBER
 DATE OF MANUFACTURE
 QUANTITY
 WEIGHT

PACK PARTS IN PLASTIC BAG AND ATTACH TO MOTOR LEAD.
 2 - NUT 5/32" B.S.W. 5/16" A/F HEX ZINC PLATED
 2 - 4 DIA INTERNAL SHAKEPROOF WASHER ZINC PLATED.

DIMENSIONS IN mm UNLESS OTHERWISE SPECIFIED
 GENERAL TOLERANCES
 LINEAR: X = ±1.0
 X.X = ±0.25
 X.XX = ±0.1
 ANGULAR: X = 2°
 X.X = ±0.5°
 SURFACE FINISHES MAX 3.0 MICRO METRES
 SYMBOLS PER A.S. 1100

This drawing remains the property of Fasco Australia Pty. Ltd.
 No part or parts of this drawing may be reproduced without written permission.

MAT'L		
FINISH		
DRAWN	MURFETTR	20/10/11
CHECKED	BALCHANT	13/01/12
RELEASED	BALCHANT	13/01/12
SCALE	1:1	



ABN 76 000 010 944

1/14 Monterey Road Dandenong Victoria

FRAME
STATUS
R
SHEET
A3

.MOTOR
 240V 50HZ 1SP ACW

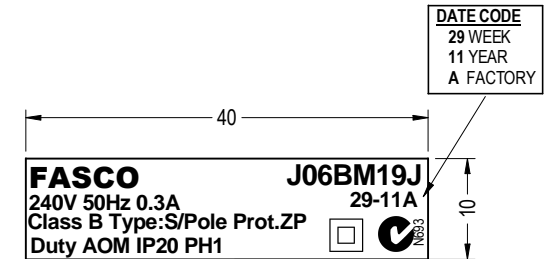
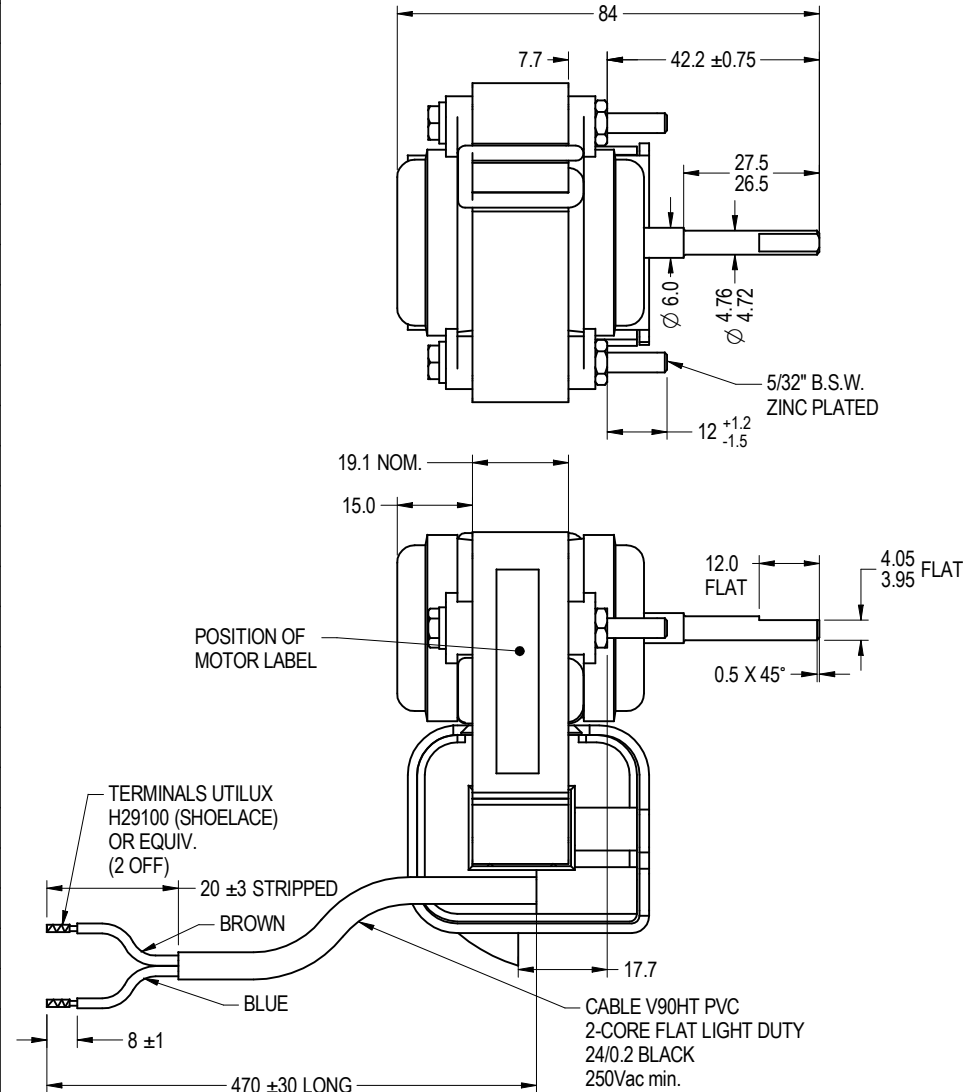
DWG. NO.

J06BM19J

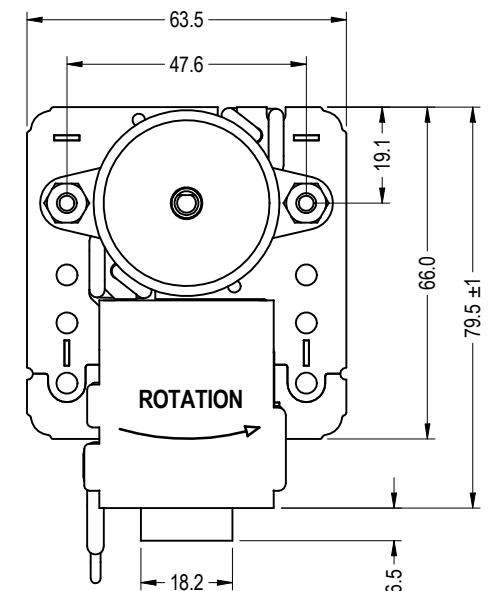
REVISION

A

DO NOT SCALE PRINT



DETAIL OF MOTOR LABEL



M/C No. 003699
 By: MURFETTR
 Date: 10/11/11
 M/C Note: FIRST SOLID EDGE DRAWING