

VADA

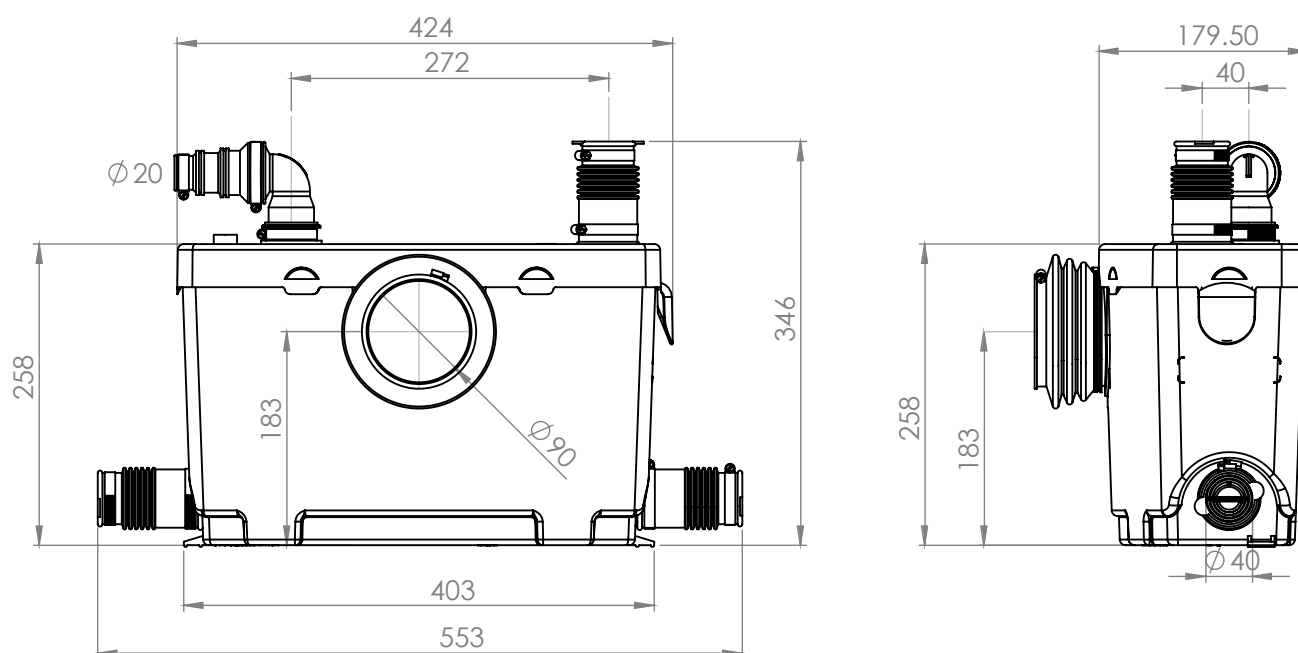
COMMERCIAL MACERATOR

SPECIFICATIONS

Recommended use	The Vada Commercial Macerator is designed for intensive use in commercial environments. The unit is designed to receive and pump away waste water from up to 4 fixtures which is ideal for restaurants, bars and other similar commercial applications.
Reece Product Code and Description	VADA COMMERCIAL MACERATOR
Dimensions	424 x 258 x 179.5 (W x H x D)
Inlet Diameter	40mm
Vertical Pumping Height	Up to 7 meters
Horizontal Pumping Distance	Up to 100 meters at 1% grade
Maximum Temperature	35°C
Inlets	4
Electrical Power Supply	220 - 240 V - 50 Hz
Motor Power Rating	600 W
Recommended Discharge Pipe Size	DN20 uPVC pressure pipe
Alarm	Optional
Casing	White
Warranty	2 years
Standards	ATS 5200.101:2005, WMKA 23048



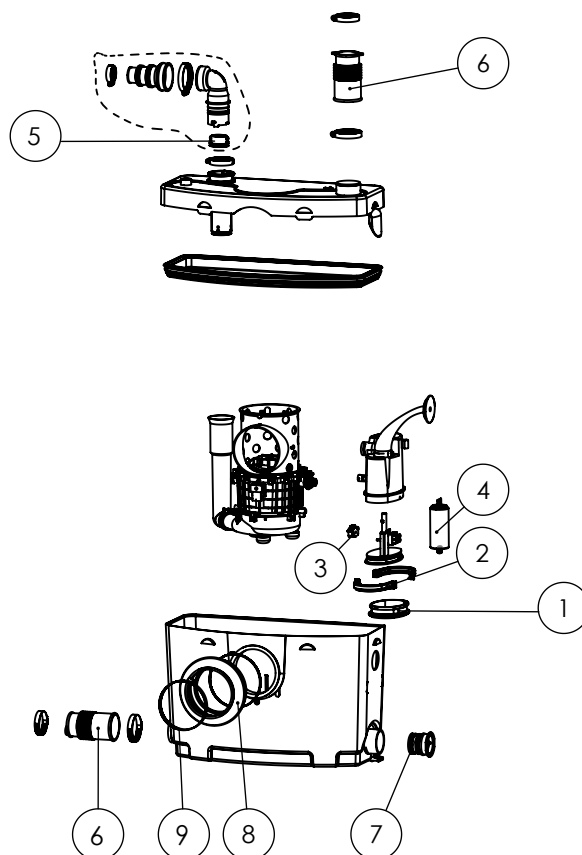
PRODUCT CONFIGURATION AND DIMENSIONS



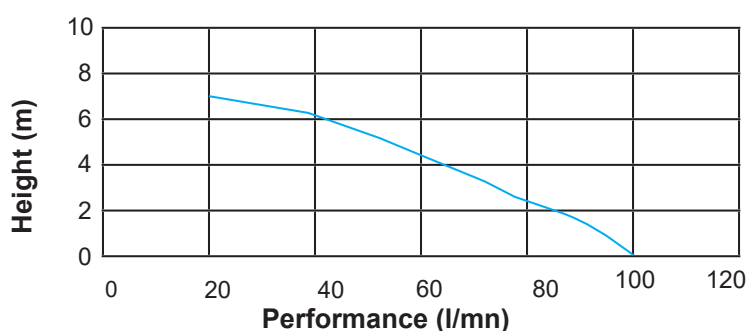
VADA COMMERCIAL MACERATOR

PARTS DIAGRAM

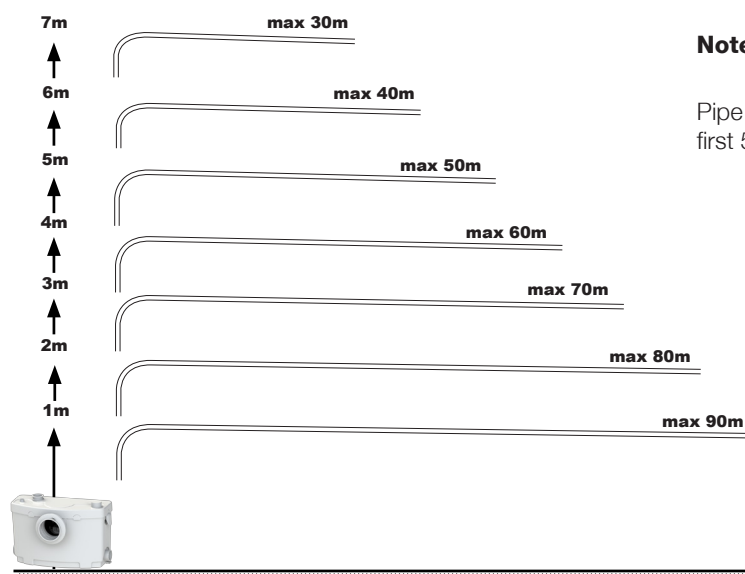
No	Description	Part No
1	Membrane	SI200184
2	1/2 membrane clip (unit)	VA100144
3	Micro switch type XGK	SA100125
4	Capacitor 14µf	CO100130
5	Discharge elbow set - white	CMBSAV
6	46/40 inlet connector - white	BL120162
7	Side plug with o-ring - white	BOUCHCOMP
8	White pan gasket	AU010121
9	Pan gasket screw clamp 90-110mm	NP100590



FLOW CHARACTERISTICS

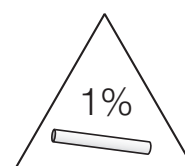


PUMPING DISTANCE PERFORMANCE



Note: 1% fall minimum required on the horizontal run.

Pipe size must be increased by 1 size minimum after the first 5 meters of horizontal run



Disclaimer Products in this specification manual must by regulation be installed by licensed and registered trade people. The manufacturer/distributor reserves the right to vary specifications or delete models from their range without prior notification. Dimensions and set-outs listed are correct at time of publication however the manufacturer/distributor takes no responsibility for printing errors.

VADA

COMMERCIAL MACERATOR

INSTALLATION INSTRUCTIONS

Important note:

- The macerator pump should be installed to allow full access in the event that servicing or removal is required.
- The unit must be located on the same floor level to the incoming fixtures. It must not be installed in a pit or in-ground opening.
- The macerator pump must be coupled directly to the spigot (outlet) of the WC pan or at a maximum distance of 300mm.
- All incoming pipework must have a constant gradient of 1:40.
- The unit has 4 possible inlet ports.
- Installation of the unit is to be undertaken by a licensed/registered plumber in conjunction with AS 3500.
- Before commissioning the unit, make sure all connections are secure and water tight.
- Where possible, venting should always be made in a manner consistent with venting requirements referred to in Australian Standards AS 3500.
- An optional carbon filter can be purchased if other methods of venting are not possible. If the option is used, periodical replacement of this filter pod is recommended approximately every 12 months.
- The electrical installation should be carried out by a registered electrician in accordance with AS/NZS 3000.
- AAV valves are not an alternative to venting to atmosphere as the unit needs to have two way venting for correct activation function.

Connecting incoming waste water:

1. If using the lid ports, use a stanley knife or hacksaw to remove the very top of the port to allow connection.
2. Connect the inlet connector to the inlet and tighten with a metal hose clamp (Fig 1).
Note: the small diameter faces towards the pump casing.
3. Position the pump so that it is not in contact with a partition or wall of the room.
4. Place the WC on a level surface.
5. Apply soapy water to the WC spigot and position the pan to the pump, ensuring there is a 20mm gap in between. If no gap is left, any contact with the pump will result in sound vibration. The gap also allows for easy service (Fig 2 and Fig 3).
6. Place the pan collar onto the front of the pump, ensuring the small diameter is secured to the pump using a plastic cable tie.
7. Pull the pan collar over the pan outlet.
8. Position the metal hose clip over the end of the pan collar connector and tighten.

FIG 1

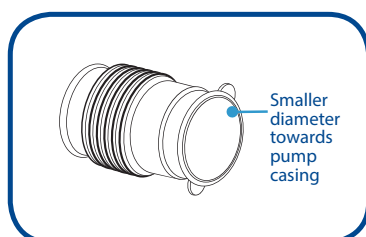


FIG 2

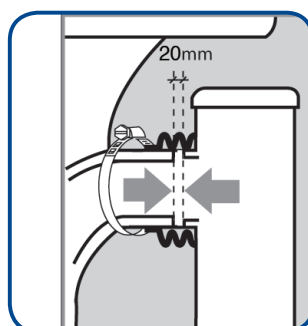
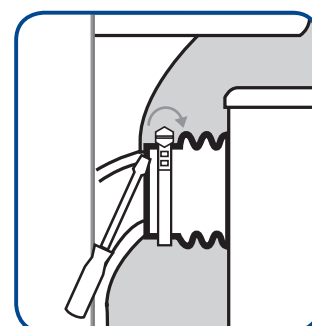


FIG 3



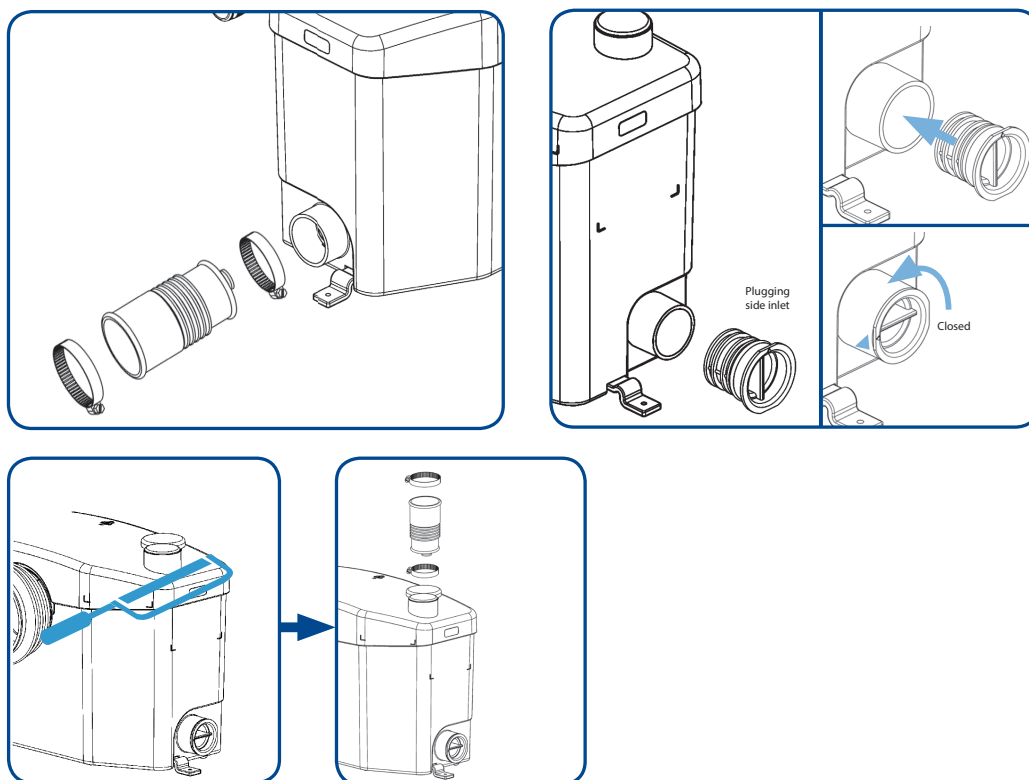
VADA

COMMERCIAL MACERATOR

Connecting extra sanitary fixtures:

See Fig 4 for connection extra fixtures.

FIG 4



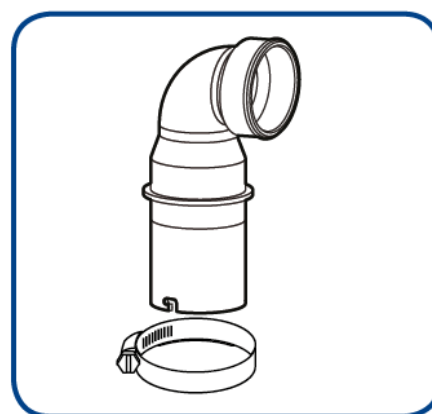
Connecting outgoing (discharge) waste water:

Note: Vertical lifts must occur prior to any horizontal runs, except for the initial short run at the pump connection, this should be NO MORE than 300mm in length.

Only ONE vertical lift is permitted in the discharge line, all changes of direction in the discharge line MUST be made with 45deg bends rather than 90deg bends.

1. Once the pipe is selected, insert the discharge elbow into the rubber discharge pipe protruding from the lid (Fig 1).
2. Turn to the required direction and secure with a steel hose clip.
3. Trim the rubber step down reducer to the discharge pipe and secure with a steel hose clip (Fig.2).
4. A PVC pressure ball valve must be installed on the pump line as close to the unit as possible.

FIG 1



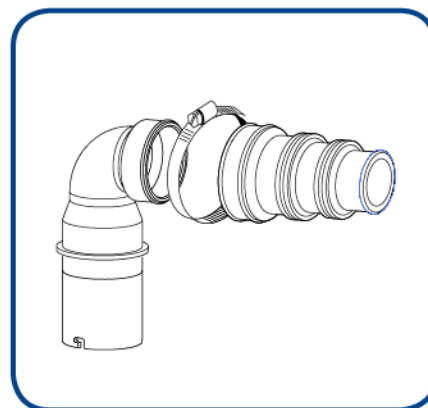
VADA

COMMERCIAL MACERATOR

FIG 2

Commissioning:

- Once ALL connections are secure and before you switch the power on, run the cold water tap for approx 10 seconds and allow water to enter the pump.
- Then switch the power to the pump ON. Your pump should immediately activate and begin discharging into the discharge pipe system. Initial run time is normally between 5-10 seconds. Duration of run time is generally determined by the length of travel in the pump-out line.
- Pump operation will shut down after this time.



Care and use:

- DO NOT dispose of solvents, paints, turps, caustic acid, or other corrosive acids or cleaners.
- DO NOT dispose of foreign objects, feminine hygiene products, wet wipes or paper hand towels in the system.
- DO NOT dispose of hot water in excess of 35°C.
- DO NOT use cleaning products that produce excessive foam, this may cause motor damage.
- DO NOT use excessive amounts of toilet paper.
- DO periodically clean the macerator with a quality cleaning product on the market that is not acid/citric based.

TROUBLESHOOTING:

SYMPTOMS	PROBABLE CAUSES	REMEDIES
The unit stops or hums	<ul style="list-style-type: none"> • An object is blocking the blades • The unit has been running for too long and the (self re-setting) thermal cut out has been engaged 	<ul style="list-style-type: none"> • Contact service/installation support • The unit will reset itself
The motor intermittently activates	<ul style="list-style-type: none"> • Dripping tap/fixtures • The non-return valve is faulty 	<ul style="list-style-type: none"> • Check the installation upstream • Clean or replace the non-return valve (externally mounted)
The motor operates normally, but continues to run for a long time	<ul style="list-style-type: none"> • The length or height of the installation is over the specification, or there are too many bends/elbows • The pump line is blocked 	<ul style="list-style-type: none"> • Check the installation • Contact service/installation support
The motor does not activate	<ul style="list-style-type: none"> • The electrical power supply is not active • The motor or the control system is defective 	<ul style="list-style-type: none"> • Restore the electrical supply • Contact service/installation support
The motor emits a rattling or crunching sound, hums, but does not run	<ul style="list-style-type: none"> • Foreign object in box • Problem with the motor or the control system 	<ul style="list-style-type: none"> • Contact service/installation support
Cloudy water comes up into the shower tray (units with side inlets)	<ul style="list-style-type: none"> • Shower installed too low compared with the macerator unit • Hinged side inlet discs clogged up 	<ul style="list-style-type: none"> • Check the installation • Clean the hinged discs • Contact service/installation support

Service/installation support:

AUS: 1300 554 779

NZ: (09) 390 4615

Disclaimer Products in this specification manual must by regulation be installed by licensed and registered trade people. The manufacturer/distributor reserves the right to vary specifications or delete models from their range without prior notification. Dimensions and set-outs listed are correct at time of publication however the manufacturer/distributor takes no responsibility for printing errors.

VADA COMMERCIAL MACERATOR



REECE PRODUCT QUALITY GUARANTEE

You have purchased a quality product from Reece Australia Pty Ltd ABN 84 004 097 090 / Reece New Zealand Ltd ("Reece"). This product is covered by a 2 year product warranty.

2 YEAR WARRANTY

This warranty covers faults in the product construction, material and assembly. Products which are within 2 years from the date of purchase, found upon inspection by an authorised Reece representative, to be defective in construction, material or assembly, will be repaired or exchanged with an equivalent product free of charge. Replaced items become Reece's property.

All replacement products will be available for collection without charge to the customer at the nearest Reece branch to the customer's location, or elsewhere as agreed between the customer and Reece.

Warranty Conditions

This warranty will apply only under all of the following conditions:

- The item has been installed by a licensed plumber
- Failure is due to a fault in the manufacture of the product
- Proof of purchase (including the date of purchase) is provided
- The installation of the product is in accordance with the instructions provided

This warranty does not cover products purchased as an ex-display without being fully checked and tested for sale by the manufacturer.

This warranty does not include faults caused by:

- Unsuitable or improper use
- Incorrect installation or installation not in accordance with the instructions provided
- Installation or part installation by the purchaser or any person other than a LICENSED PLUMBER or tradesperson licensed to install this product.
- Normal wear and tear
- Inadequate or complete lack of maintenance
- Chemical, electrochemical or electrical influences
- Harsh detergents or abrasive cleaners used on product finishes

EXCLUSIONS

To the fullest extent permitted by law, Reece excludes all liability for damage or injury to any person, damage to any property, and any indirect consequential or other loss or damage.

CLAIM PROCEDURE

For all warranty queries customers are to contact the branch where the product was purchased. These details can be found on your purchase invoice.

Our goods come with guarantees that cannot be excluded under the Australian Consumer Law. You are entitled to a replacement or refund for a major failure and for compensation for any other reasonably foreseeable loss or damage. You are also entitled to have the goods repaired or replaced if the goods fail to be of acceptable quality and the failure does not amount to a major failure.

Tech page version 3

Plumbers/Contractors, please ensure a copy of the installation instructions is left with the end user for future reference.

Don't risk it, use a licensed plumber.™

