

## Venice Wall Hung Vanity



The Venice Collection balances modern symmetry and classical beauty. Embodying organic design and finishes, flowing form and function with timeless style. Venice is contemporary luxury and is designed to be paired with the Venice basins and box frame mirror. Designed and manufactured in Australia.

SPECIFICATIONS		VARIATIONS			
<b>Recommended Use</b>	Domestic, Hotel & Commercial	<b>750</b>	<b>1000</b>	<b>1200</b>	<b>1500</b>
<b>Material</b>	Exterior: Timber laminate on HMR board Thermolaminate on HMR board	<b>Width (mm)</b>	750	1000	1200
<b>Colour</b>	For more information please refer to the Material, Colour and and Finishes page	<b>Depth (mm)</b>	550	550	550
<b>Bench Top Colours</b>	Timber laminate or Caesarstone® Deluxe Colour	<b>Height (mm)</b>	410	410	410
<b>Fixing</b>	Bolted/screwed to wall by licensed trades person. Supplied with easy to install brackets. Installer must determine appropriate wall fixing	<b>Number of Drawers</b>	1	1	1
<b>Basin</b>	Sold Separately	<b>Weight - w timber top</b>	51kg	55kg	65kg
<b>Tap Hole Availability</b>	Not available on timber bench top	<b>- w stone top</b>	64kg	76kg	88kg
<b>Drawers</b>	Hettich push to open drawers Includes drawer divider				
<b>Micro Trap</b>	Supplied with 40mm PVC micro-trap				

Dimensions are nominal measurements only.

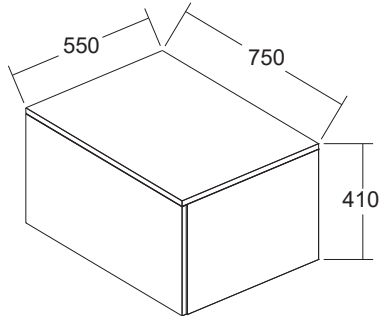
**Disclaimer:** Products in this specification manual must by regulation be installed by licensed and registered trade people. The manufacturer/distributor reserves the right to vary specifications or delete models from their range without prior notification. Dimensions are nominal measurements only. Dimensions and set-outs listed are correct at time of publication however the manufacturer/distributor takes no responsibility for printing errors.

Published 02/10/2020

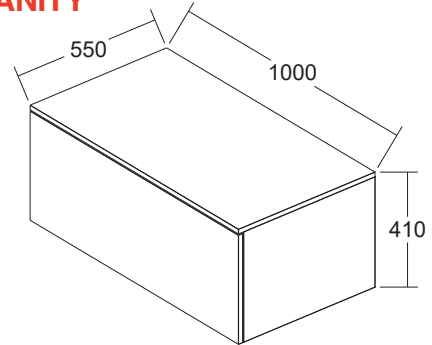
## Venice Wall Hung Vanity

### LINE DRAWINGS

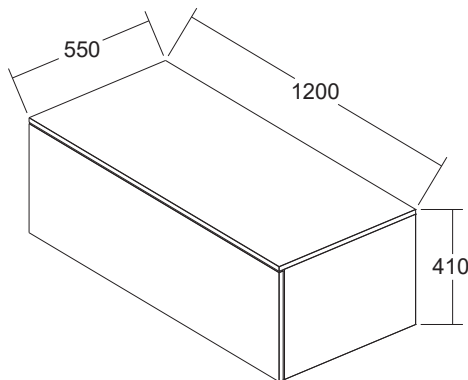
#### 750 VANITY



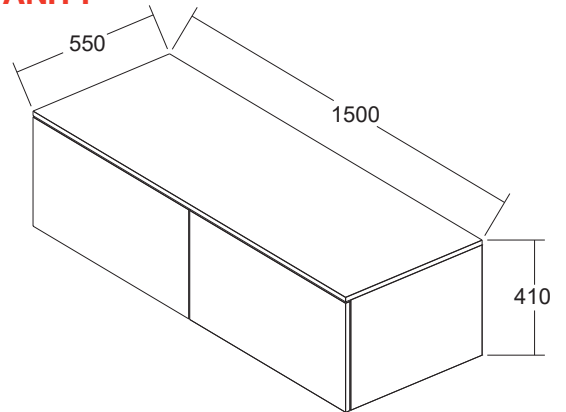
#### 1000 VANITY



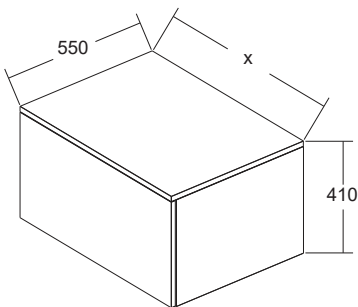
#### 1200 VANITY



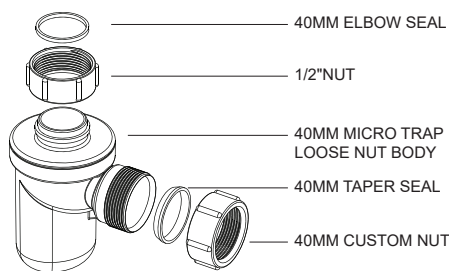
#### 1500 VANITY



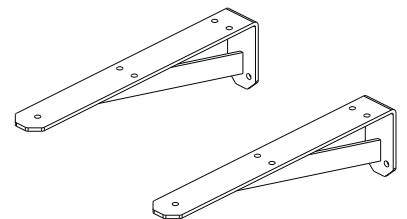
### ASSEMBLY LIST



Venice cabinet with drawer



40mm PVC micro trap



Steel mounting bracket set\*

\*Bracket component appearance may vary from illustration

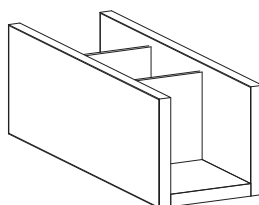
#### Note:

Venice 750, 1000 & 1200 vanity includes:

- 1x set of steel brackets
- 1x internal drawer divider

Venice 1500 vanity includes:

- 2x sets of steel brackets
- 2x internal drawer dividers



Internal drawer divider

Dimensions are nominal measurements only.

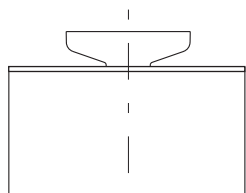
**Disclaimer:** Products in this specification manual must by regulation be installed by licensed and registered trade people. The manufacturer/distributor reserves the right to vary specifications or delete models from their range without prior notification. Dimensions are nominal measurements only. Dimensions and set-outs listed are correct at time of publication however the manufacturer/distributor takes no responsibility for printing errors.

Published 02/10/2020

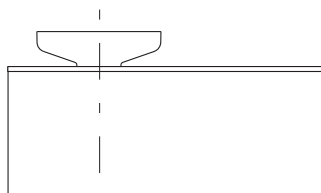
## Venice Wall Hung Vanity

### VENICE BASIN CONFIGURATIONS

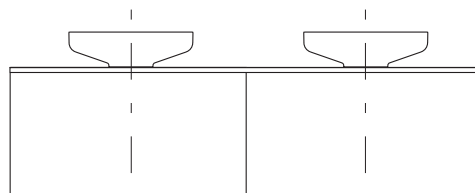
#### VENICE 450 BASIN POSITIONS ON VANITY



Centred Bowl  
750/1000/1200 (single drawer)

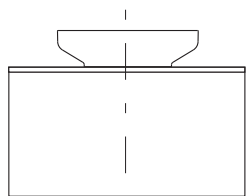


Offset left or right bowl  
1000/1200 (single drawer)  
1500 (double drawer)

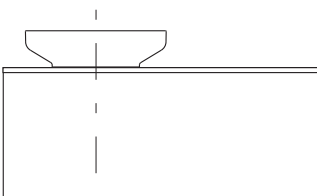


Double bowl  
1200 (single drawer)  
1500 (double drawer)

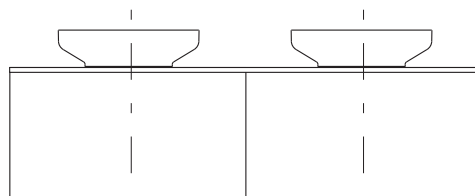
#### VENICE 500 BASIN POSITIONS ON VANITY



Centred Bowl  
750/1000/1200 (single drawer)

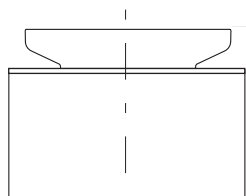


Offset left or right bowl  
1000/1200 (single drawer)  
1500 (double drawer)

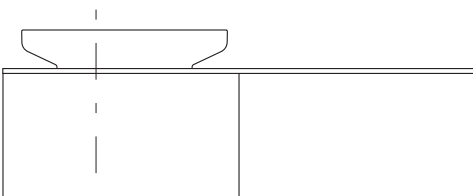


Double bowl  
1500 (double drawer)

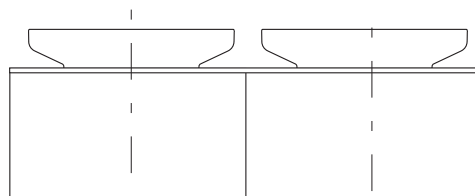
#### VENICE 700 BASIN POSITIONS ON VANITY



Centred Bowl  
750/1000/1200 (single drawer)

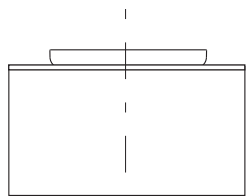


Offset left or right bowl  
1500 (double drawer)

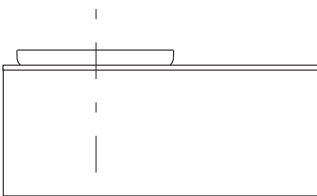


Double bowl  
1500 (double drawer)

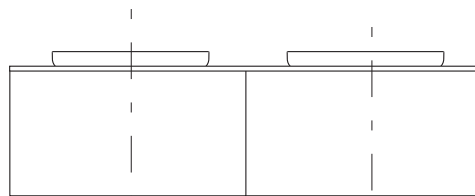
#### VENICE 500 SEMI INSET BASIN POSITIONS ON VANITY



Centred Bowl  
750/1000/1200 (single drawer)



Offset left or right bowl  
1000/1200 (single drawer)  
1500 (double drawer)



Double bowl  
1500 (double drawer)

**NOTE: SEMI-INSET BASIN HAS ALLOWANCE FOR PLUMBING IN DRAWER**

**ASK YOUR REECE REPRESENTATIVE FOR OTHER SUITABLE BASINS FOR VENICE CABINETS**

Dimensions are nominal measurements only.

**Disclaimer:** Products in this specification manual must by regulation be installed by licensed and registered trade people. The manufacturer/distributor reserves the right to vary specifications or delete models from their range without prior notification. Dimensions are nominal measurements only. Dimensions and set-outs listed are correct at time of publication however the manufacturer/distributor takes no responsibility for printing errors.

Published 02/10/2020