

# Data sheet

valid from: 9/14/18

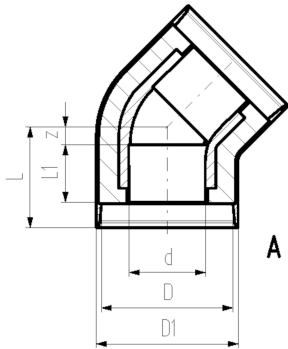


## COOL-FIT 4.0 Elbow 45°

### Model:

- Pre-insulated PE100 SDR11, metric
- Insulation made from GF HE foam
- Outer jacket impact resistant. Colour: black
- Electrofusion Fitting with integrated sealing lip, for a water and vapour tight sealing

\*d32/90 - d110/180 available from Q4 2018



	d/D (mm)	PN (bar)	Code	Weight (kg)	D1 (mm)	L (mm)	L1 (mm)	z (mm)	closest inch (inch)	Type
*	32/90	16	<b>738 153 108</b>	0.108	97	72	36	11	1	A
*	40/110	16	<b>738 153 109</b>	0.162	117	76	40	11	1 ¼	A
*	50/110	16	<b>738 153 110</b>	0.218	117	82	44	13	1 ½	A
*	63/125	16	<b>738 153 111</b>	0.315	132	89	48	16	2	A
*	75/140	16	<b>738 153 112</b>	0.650	147	98	55	18	2 ½	A
*	90/160	16	<b>738 153 113</b>	1.030	168	117	62	30	3	A
*	110/180	16	<b>738 153 114</b>	1.270	188	138	72	41	4	A
	160/250	16	<b>738 153 117</b>	4.100	258	161	90	46	6	A
	225/315	16	<b>738 153 120</b>	17.603	324	278	110	143	8	A

The technical data are not binding. They neither constitute expressly warranted characteristics nor guaranteed properties nor a guaranteed durability. They are subject to modification. Our General Terms of Sale apply.

Georg Fischer Piping Systems Ltd, Postfach, CH-8201 Schaffhausen/Switzerland

Phone +41 -(0)52-631 1111

e-mail: [info.ps@georgfischer.com](mailto:info.ps@georgfischer.com)

Internet: <http://www.gfps.com>