

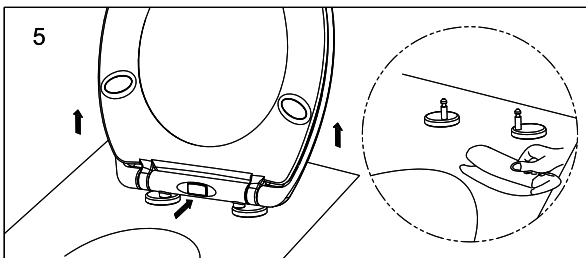
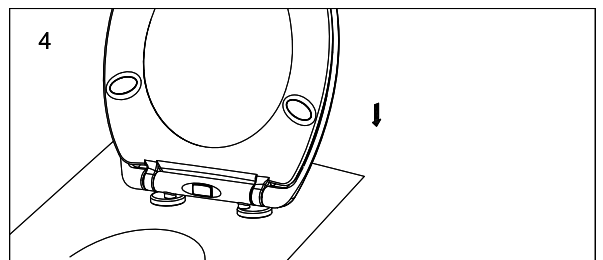
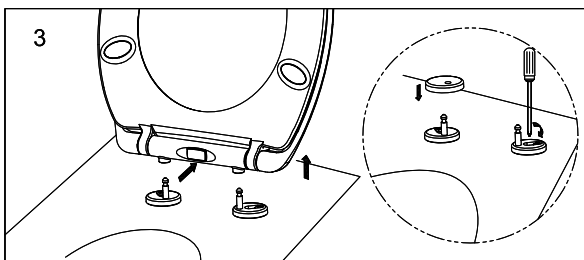
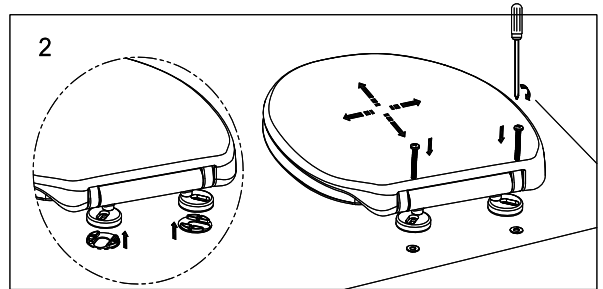
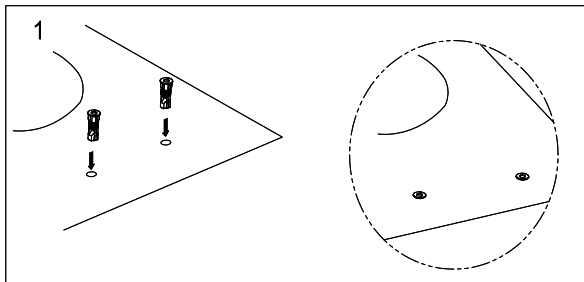
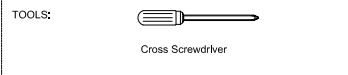
## KADO

## Kado Lux Quick Release Soft Close Seat

## LUX SEAT INTALLATION INSTRUCTIONS

## Important Note:



Soft close seat and covers can take up to 30 seconds to close. Do not force the closing mechanism as this may result in damage. The fixings of your seat may require re-tightening occasionally depending on use.



## Top Fixing Installation Procedure

1. Insert the nylon toggles into the hinge holes of the pan.
2. Mount the hinges onto the shaft of the toilet seat.
3. Plug the bolt into the nylon toggle.
4. Align the toilet seat with the pan.
5. Tighten the screws.
6. Push the button to release the seat.
7. Lift the toilet seat.
8. Insert hinge covers over posts.
9. Fix seat into final position.

## SPARE PARTS

Picture	Reece Code	Product Description
	9506723	KADO QUICK RELEASE SCS BUFFER SET
	9503294	TOP FIX QUICK RELEASE HINGE SET

Dimensions are nominal measurements only.

Plumbers, please ensure a copy of the installation instructions is left with the end user for future reference.

Published 28/07/2020