



WOLFEN™

INSTALLATION MANUAL

1806668 Wolfen 800 CCBTW Double Flap Toilet Suite White (4 Star)

1806669 Wolfen 800 CCBTW Double Flap Toilet Suite Blue (4 Star)

1806670 Wolfen 800 CCBTW Double Flap Toilet Suite Grey (4 Star)





WOLFEN™

CONTENTS

Intro	02
Technical Information	03
Installation Instructions	04 - 07
Cleaning	05
Warranty	08

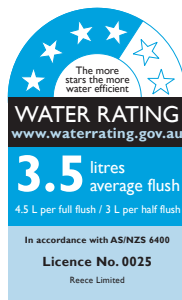
Delivering unrivalled quality

Designed for absolute performance, Wolfen's 800 Closed Coupled Back to Wall Toilet Suite sets new standards in quality, hygiene and flushing performance. A Rimless, raised height design combined with precision engineering and extended footprint ensures suitability for care and ambulant environments.

Available in blue, grey and white double flap seats and raised height buttons to meet the Ambulant requirements of AS1428.

TECHNICAL INFORMATION

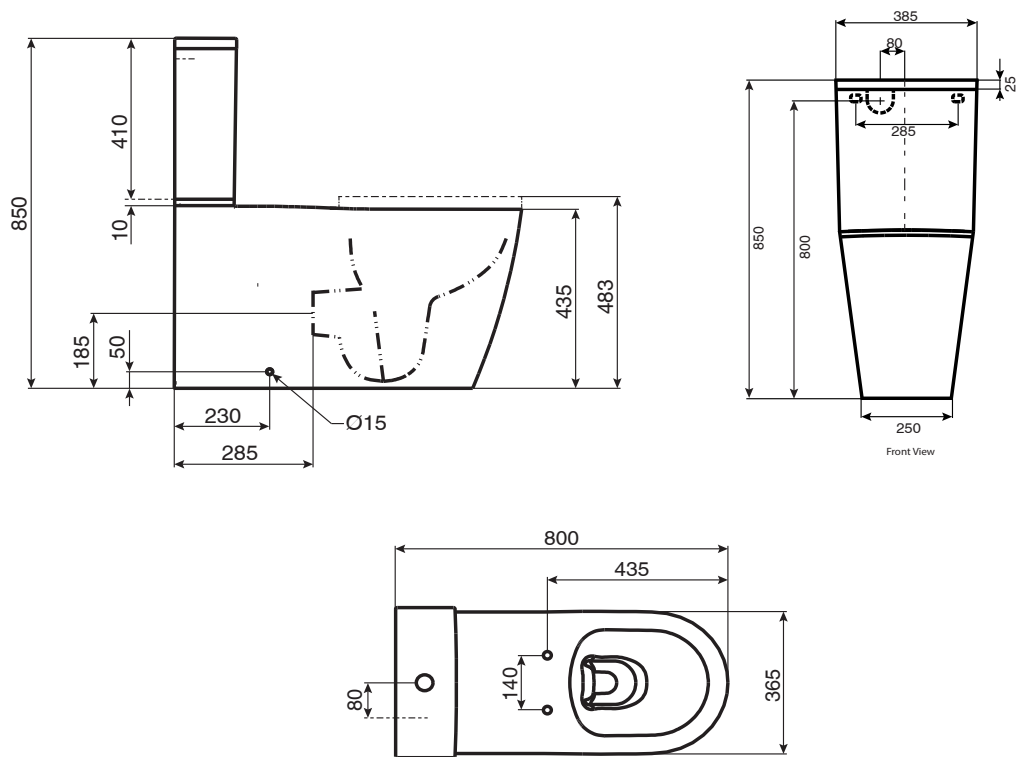
Model	Wolfen 800 CCBTW Toilet Suite Double Flap Seat White (4 Star)	Wolfen 800 CCBTW Toilet Suite Double Flap Seat Blue (4 Star)	Wolfen 800 CCBTW Toilet Suite Double Flap Seat Grey (4 Star)
Product Code	1806668	1806669	1806670
Material	Pan: Vitreous China Cistern: Vitreous China Seat: Urea	Pan: Vitreous China Cistern: Vitreous China Seat: Urea	Pan: Vitreous China Cistern: Vitreous China Seat: Urea
Colour	Pan: White Cistern: White Seat: White	Pan: White Cistern: White Seat: Blue	Pan: White Cistern: White Seat: Grey
Weight	Pan: 50kg Cistern: 19kg Seat: 2.8kg	Pan: 50kg Cistern: 19kg Seat: 2.8kg	Pan: 50kg Cistern: 19kg Seat: 2.8kg
Water Inlet Position	Back Inlet	Back Inlet	Back Inlet
Toilet Seat	Double Flap Seat	Double Flap Seat	Double Flap Seat
Rim Configuration	Rimless	Rimless	Rimless
Set Out (mm)	185 min - 285 max	185 min - 285 max	185 min - 285 max
Inlet Valve Pressure	500 kPa	500 kPa	500 kPa
For Replacement Spare Parts	1804815 Wolfen Double Flap Toilet Seat White	1804816 Wolfen Double Flap Toilet Seat Blue	1804817 Wolfen Double Flap Toilet Seat Grey
	9508769 Wolfen 800 Toilet Suite Button - White	9508768 Wolfen 800 Toilet Suite Button - Blue	9508767 Wolfen 800 Toilet Suite Button - Grey
	9508717 Wolfen Seat Buffers (Sideways)		
	9508718 Wolfen Fixing Kit		
Product Features	Meets AS1428.1 Ambulant design for access and mobility requirements		



INSTALLATION INSTRUCTIONS

Wolfen CCBTW Toilet Suite Double Flap Seat (4 Star)

1806668|1806669|1806670



Set-Up

1. Rough in positions of water inlet, waste outlet and fixing bracket holes. Ensure inlet connection extends 40mm from finished wall. Prepare waste outlet according to required set out (185mm min - 285mm max) and drill floor fixing brackets into position (60mm inside traced mark of pan rim).
2. Insert top-fix plastic fixing nut (2) and bolt (2) into pan (supplied) to fit the cistern.

S-Trap Installation

1. Lubricate the rubber fins of the pan bend and position in the waste pipe at the required height. Fix the pan connector back to the wall using the rod and bracket.
2. Align and push pan back to wall, connect pan spigot into waste bend ensuring firm connection.
3. Fix cistern onto pan, bucket flush and check for leaks.

Water Inlet & Levelling Pan

1. Connect rear water inlet valve using 15mm mini cistern stop supplied. Fit hose elbow to mini cistern stop. Fill the cistern and ensure correct water level. For adjustment refer separate inlet valve instructions.
2. Ensure that pan is level and that cistern aligns with wall. Make minor adjustments if necessary.
3. Fix pan to floor using screws and caps provided.
4. Silicone pan to floor. Remove excess sealant.

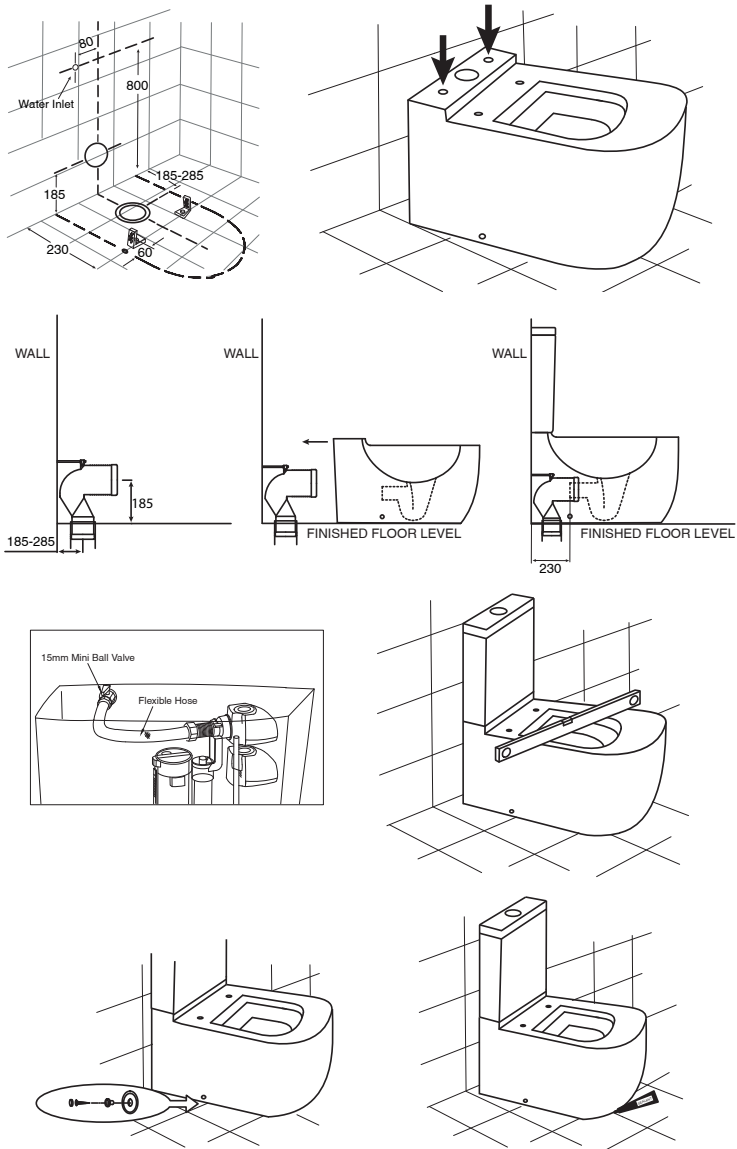
Important Note

Ensure that the back inlet connection extends 40mm from the finished wall.

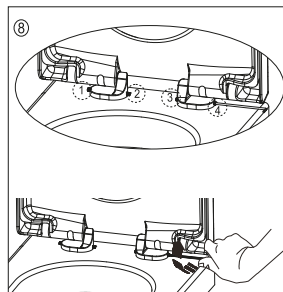
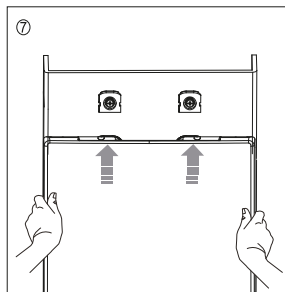
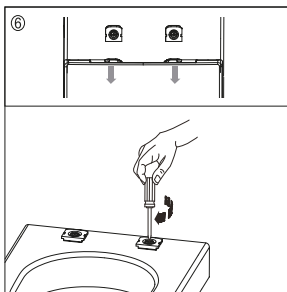
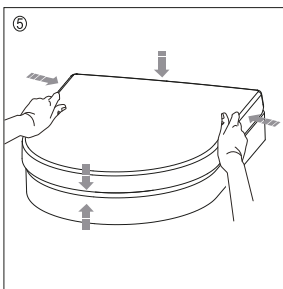
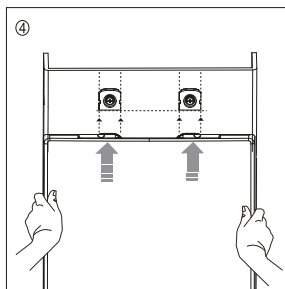
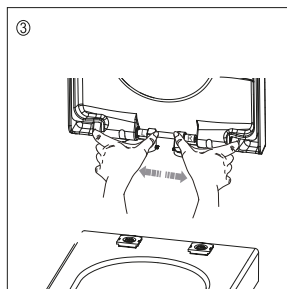
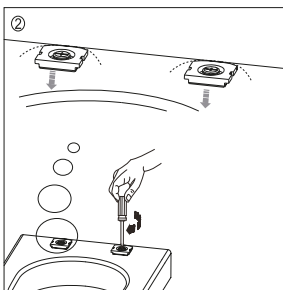
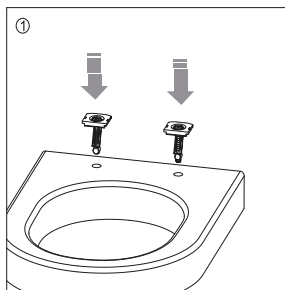
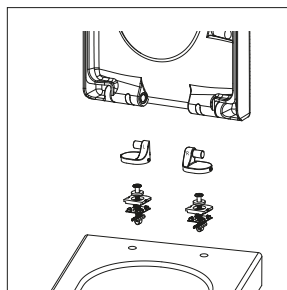


CLEANING

We recommend the use of soap water or approved cleaners. This product should not be cleaned with abrasive materials. Damage caused by any improper treatment is not covered by the product warranty. Refer to Warranty Conditions.



INSTALLATION INSTRUCTIONS



REECE PRODUCT QUALITY GUARANTEE



You have purchased a quality product from Reece Australia Pty Ltd ABN 84 004 097 090 ("Reece"). This product is covered by a 5 year replacement product warranty and a 12 month warranty over spare parts and labour.

5 YEAR WARRANTY

This warranty covers faults in the product construction, material and assembly. Products which are within 5 years from the date of purchase, found upon inspection by an authorised Reece representative, to be defective in construction, material or assembly, will be repaired or exchanged with an equivalent product free of charge. Replaced items become Reece's property.

All replacement products will be available for collection without charge to the customer at the nearest Reece branch to the customer's location, or elsewhere as agreed between the customer and Reece.

Labour and Spare Parts

The labour for the replacement of products and spare parts to which this warranty applies will be supplied by Reece or relevant supplier using licensed plumbers engaged by Reece or relevant supplier within 1 year from the date of purchase. Spare parts other than those listed in the Manufacturer's Provisions above, which are within 1 year from the date of purchase found upon inspection by an authorised Reece representative to be defective in construction, material or assembly, will be replaced free of charge.

Warranty Conditions

This warranty will apply only under all of the following conditions:

- The item has been installed by a licensed plumber
- Failure is due to a fault in the manufacture of the product
- Proof of purchase (including the date of purchase) is provided
- The installation of the product is in accordance with the instructions provided

This warranty does not cover products purchased as an ex-display without being fully checked and tested for sale by the manufacturer.

This warranty does not include faults caused by:

- Unsuitable or improper use
- Incorrect installation or installation not in accordance with the instructions provided
- Installation or part installation by the purchaser or any person other than a LICENSED PLUMBER
- Normal wear and tear
- Inadequate or complete lack of maintenance
- Chemical, electrochemical or electrical influences
- Harsh detergents or abrasive cleaners used on product finishes

EXCLUSIONS

To the fullest extent permitted by law, Reece excludes all liability for damage or injury to any person, damage to any property, and any indirect consequential or other loss or damage.

CLAIM PROCEDURE

For all warranty queries customers are to contact the branch where the product was purchased. These details can be found on your purchase invoice.

Our goods come with guarantees that cannot be excluded under the Australian Consumer Law. You are entitled to a replacement or refund for a major failure and for compensation for any other reasonably foreseeable loss or damage. You are also entitled to have the goods repaired or replaced if the goods fail to be of acceptable quality and the failure does not amount to a major failure.

IF AFTER CHECKING THE
INSTALLATION INSTRUCTIONS
AND IMPORTANT
INFORMATION, THE PROBLEM
HAS NOT BEEN IDENTIFIED,
CUSTOMERS ARE TO
CONTACT THE BRANCH
WHERE THE PRODUCT WAS
PURCHASED. THESE DETAILS
CAN BE FOUND ON YOUR
PURCHASE INVOICE.

General contact details for
Reece are as follows:

Reece Australia Pty Ltd

118 Burwood Hwy

Burwood VIC 3125

+61 3 9274 0000

admin@reece.com.au



WOLFEN™

reece.com.au/wolfen