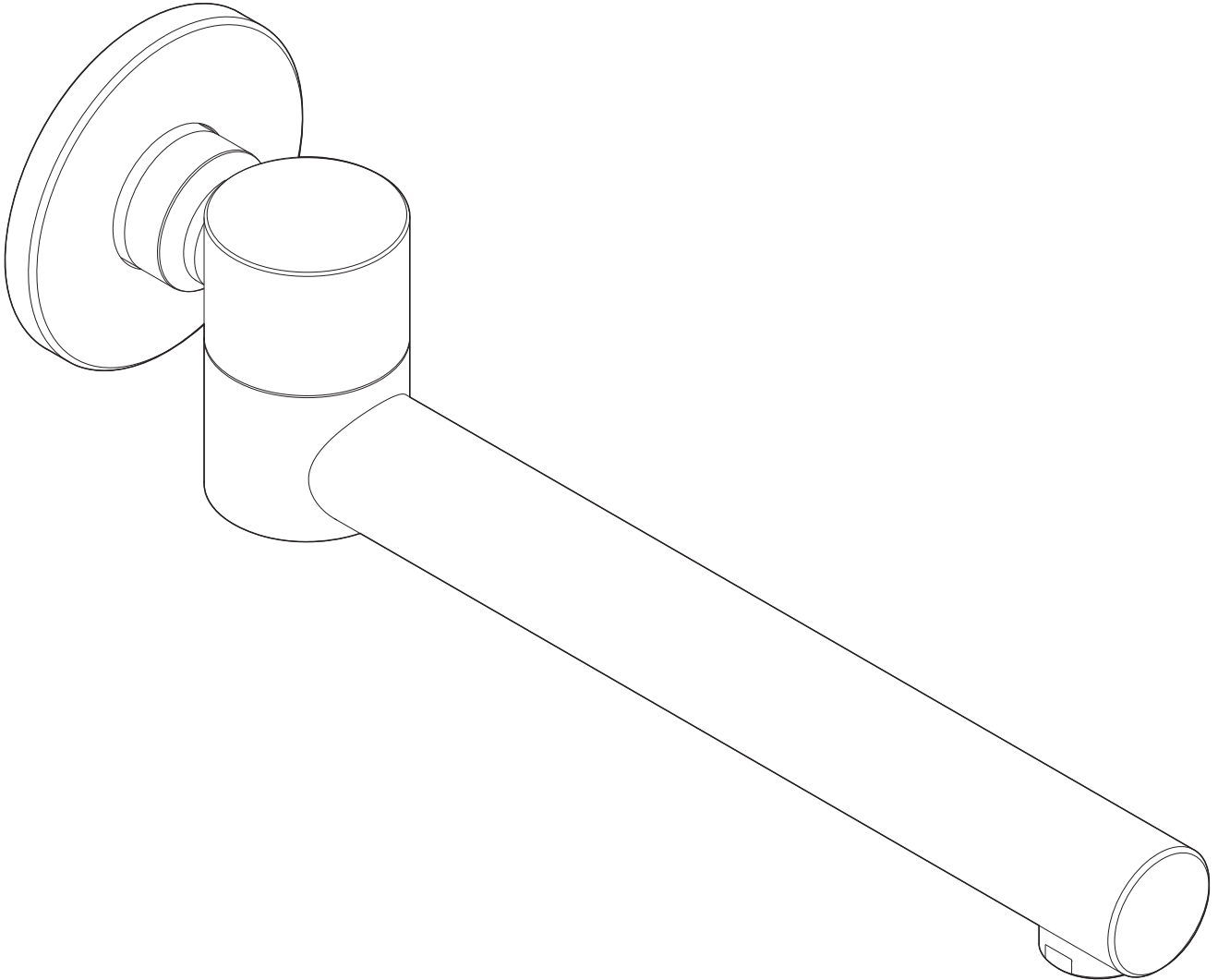


Drift Swivel Bath Outlet Straight



Installation Instructions



Outlet must be installed to the requirements of AS/NZS 3500 by a qualified Plumber.



Installation shall comply with Australian Standard AS3500.1 or relevant local authority requirements.

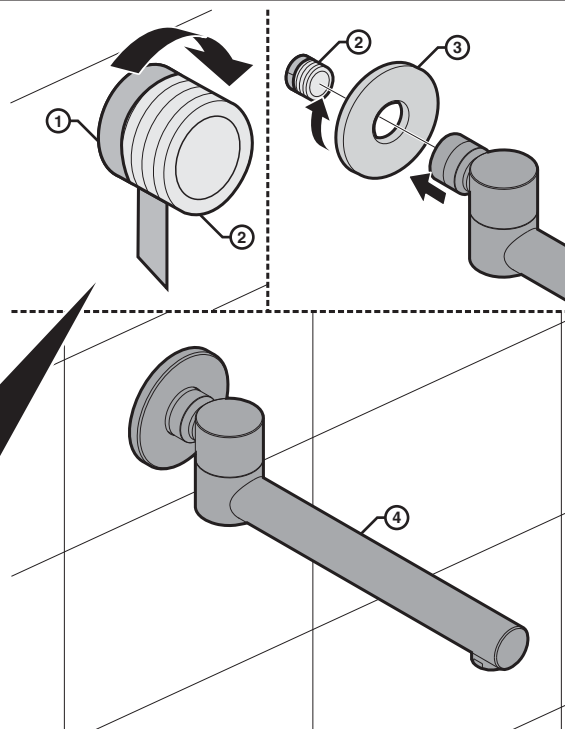
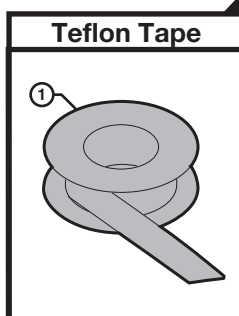
Note: The water supply lines need to be 'flushed out' prior to installation.

- Use a suitable sealing Compound **(1)** (plumbing Teflon Tape or Pipe cord) on exposed Wall Thread **(2)**.
- Fit Cover Plate **(3)** onto rear of Outlet **(4)**.
- Assemble Outlet **(4)** to Wall Thread **(2)**.

Note: Ensure outlet is correctly aligned



Maximum Continuous Working Temperature 65c.



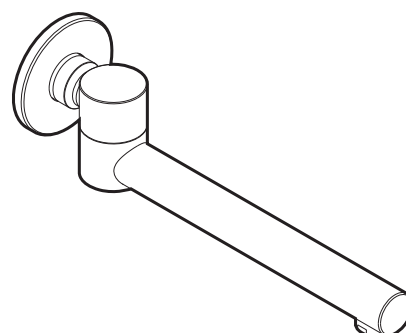
Recommended pressure range 150 – 500kPa.



Maximum Continuous Working Temperature 65c.



Leaking joints are not covered by the warranty.



Care Details

We recommend the use of soapy water or approved cleaners. This product should not be cleaned with abrasive materials. Damage caused by any improper treatment is not covered by the product warranty. Refer to Warranty Conditions

Plumbers, please ensure a copy of the installation instruction is left with the end user for future reference.

