



## INSTALLATION INSTRUCTIONS

**RBA8902-102 FREE STANDING DRINKING FOUNTAIN**  
**RBA8902-151 JUNIOR HEIGHT VERSION**



## COMPONENTS

Stainless Steel Drinking Fountain  
Stainless Steel Fixing Bracket  
Bubbler  
Security Screws and bit

## PRE-INSTALLATION

Installation should be in accordance with AS/NZS 3500.1 & AS/NZS 3500.2, local authority and statutory requirements, and as per these installation instructions.

1. Water should be terminated with a 15mm mini cock, within the shaded area shown. Towards the top of the area is preferable due to the proximity of the access panel.
2. 40mm waste should be terminated at 830mm [675mm for Junior Height] from finished floor, and centre of the unit. This dimension is arrived at using a Iplex standard 40mm P trap supplied by others.
3. If S trap configuration is required, floor penetration should be within an area not closer than 40mm from the edge of the footprint of the unit.

## INSTALLATION

1. Remove the mounting frame and access panel from the unit using the security bit provided.
2. Fix the mounting frame and S-clip to the wall in the location shown, using suitable fixings supplied by others. Using a level, ensure that the frame is vertical, and the S-clip is level.
3. Fix the unit to the frame and mark the fixing holes in the base of the unit. Remove the unit, drill the floor, fit floor anchors (by others) and re-fit the unit.
4. Ensure that the unit is securely fitted to the frame and make the necessary water and waste connections.
5. Check for leaks and replace the access panel.

## HYDRAULIC REQUIREMENTS

Pressure:	Min: 200kPa Max: 500kPa
Inlet Connection:	G $\frac{1}{2}$ B inlet connection
Outlet Connection:	40mm BSP Waste connection
Water Temperature:	4 - 30°C

# INSTALLATION DRAWING

1 Bubbler

2 Stainless Steel Access Panel

3 Vandal Resistant Fasteners

4 Wall & Floor Anchors (By Others)

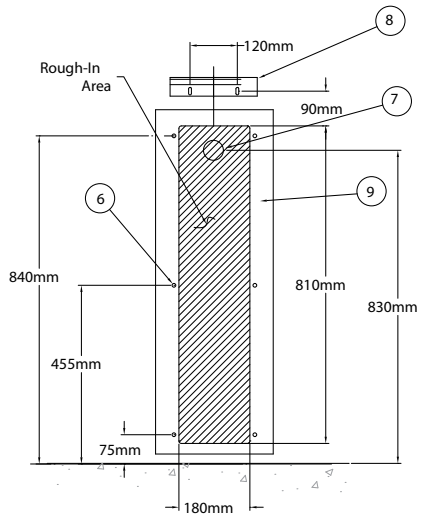
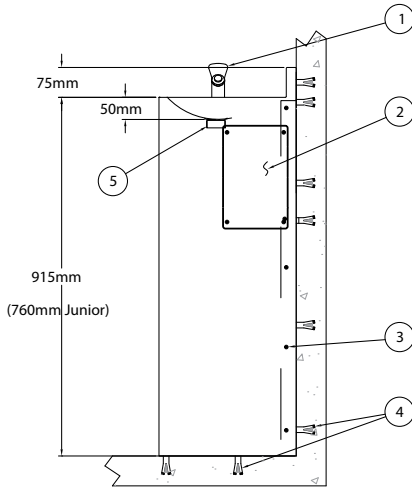
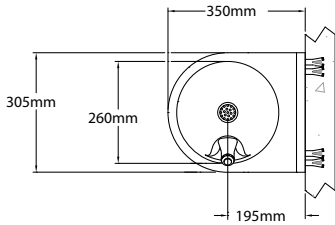
5 40mm BSP Waste Connection

6 9mm DIA. Anchoring Holes

7 Waste outlet for Hardies 40mm "P" trap

8 "S" Clip

9 Mounting Frame



## RBA8902-102 FREE STANDING DRINKING FOUNTAIN

Unit is a free standing drinking fountain fabricated of 1.6mm thick, type 304 stainless steel with exposed surfaces polished to a satin finish. Smooth radiused design eliminates sharp corners. Supplied with CP self closing, push button bubbler with mouth shield.

## SPARE PARTS

**RBA Code Number**  
RBA8900-999-002

**Part Description**  
Replacement cartridge

## TROUBLE SHOOTING

PROBLEM	POSSIBLE CAUSES	SOLUTION
No flow or low volume	Water turned off. Inlet strainer blocked.	Turn on. Remove and clean.
Water flows continuously	Cartridge blocked with dirt or cartridge damaged	Remove and clean. Replace the cartridge*
Leak under knob	Loose screws or cartridge damaged	Tighten brass screw under white flow adjustment screw. Replace the cartridge*
Short or long flow stream	Low or high pressure	Rectify supply pressure as per hydraulic requirements
Short or long flow stream	Cartridge adjustment required	Remove button, adjust white screw in cartridge clockwise to reduce, or counter clockwise to increase.

\*Replacement Cartridge Model RBA8900-999-002



For further information,  
contact the nearest RBA Group office:  
**SYDNEY • MELBOURNE • BRISBANE • AUCKLAND**  
**Australia** 1300 788 778 | [www.rba.com.au](http://www.rba.com.au)  
**New Zealand** 0800 722 111 | [www.rbagroup.co.nz](http://www.rbagroup.co.nz)

