



WOLFEN

# INSTALLATION MANUAL

---

252430 Wolfen Pre Rinse Sink Mixer

---

252452 Wolfen Compact Pre Rinse Sink Mixer

---

252431 Wolfen Pre Rinse Trigger Spray

---



Installation Details | Warranty



**WOLFEN™**

## **CONTENTS**

|                           |    |
|---------------------------|----|
| Intro                     | 03 |
| Technical Information     | 04 |
| Unit Components           | 06 |
| Installation Instructions | 08 |
| Warranty                  | 10 |

## Delivering unrivalled quality

Designed for absolute performance, Wolfen's commercial mixer products set new standards in quality and durability. Ergonomic design combined with precision engineering ensures that every Wolfen product is easy-to-use and made to last. Here are just some of the many innovative features that make Wolfen mixers the smart solution.

### Infection control

- Food grade hose
- Minimum crevices for bacteria build up

### Commercial durability features

- Stainless steel spray jet head
- Stainless steel braided hose with external lining
- Wall fixing bracket for ongoing stability

### Installation and Servicing

- Cut-down wall bracket with height and projection adjustment

### Usage features

- Easy operation with front control pot filler
- Tensioned polished spring for maneuverability
- Trigger spray clip enables effortless continual use

### Anti vandal features

- Allen key fixing

### Application

- Commercial Food Premises



WM

Suitable for High Pressure applications (minimum 150kPa)

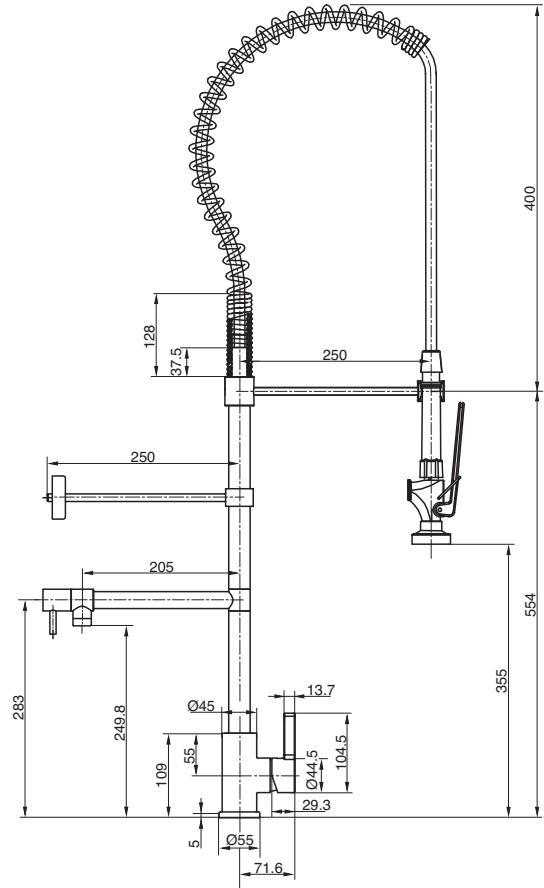
# TECHNICAL INFORMATION

| Model                                | Pre Rinse Sink Mixer   | Pre Rinse Sink Mixer Compact | Trigger Spray |
|--------------------------------------|------------------------|------------------------------|---------------|
| Product Code                         | 252430                 | 252452                       | 252431        |
| Product Type                         | Pre Rinse unit         | Pre Rinse unit               | Hand spray    |
| Colour                               | Chrome                 | Chrome                       | Chrome        |
| Finish                               | Polished               | Polished                     | Polished      |
| Material                             | Brass                  | Brass                        | Brass         |
| Cartridge Type                       | Ceramic Disc Cartridge | Ceramic Disc Cartridge       | N/R           |
| Min Continuous Flow Working Pressure | 150kPa                 | 150kPa                       | 150kPa        |
| Max Continuous Flow Working Pressure | 500kPa                 | 500kPa                       | 500kPa        |
| Min Continuous Working Temperature   | 5°C                    | 5°C                          | 5°C           |
| Max Continuous Working Temperature   | 80°C                   | 80°C                         | 80°C          |
| Max Static Pressure                  | 500kPa                 | 500kPa                       | 500kPa        |
| Height                               | 954mm                  | 615mm                        | N/R           |
| Clearance (Pot Filler)               | 250mm                  | 169mm                        | N/R           |
| Reach (Trigger Spray)                | 250mm                  | 250mm                        | N/R           |

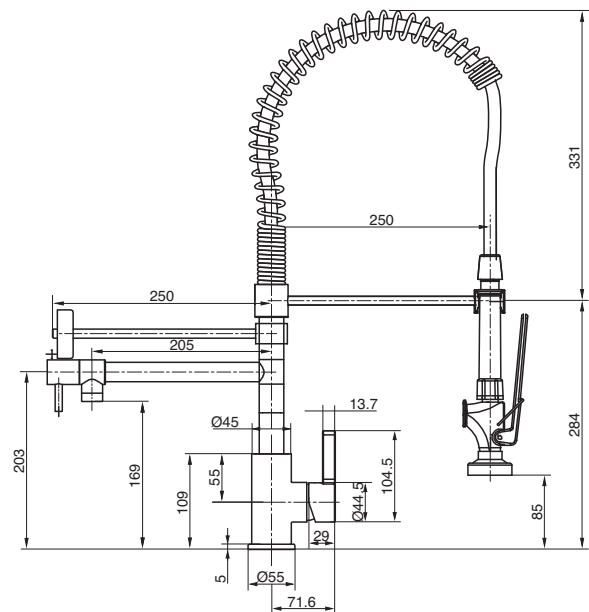


**Wolfen Pre Rinse Sink Mixer**

252430


**Wolfen Compact Pre Rinse Sink Mixer**

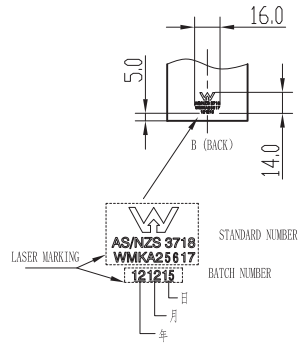
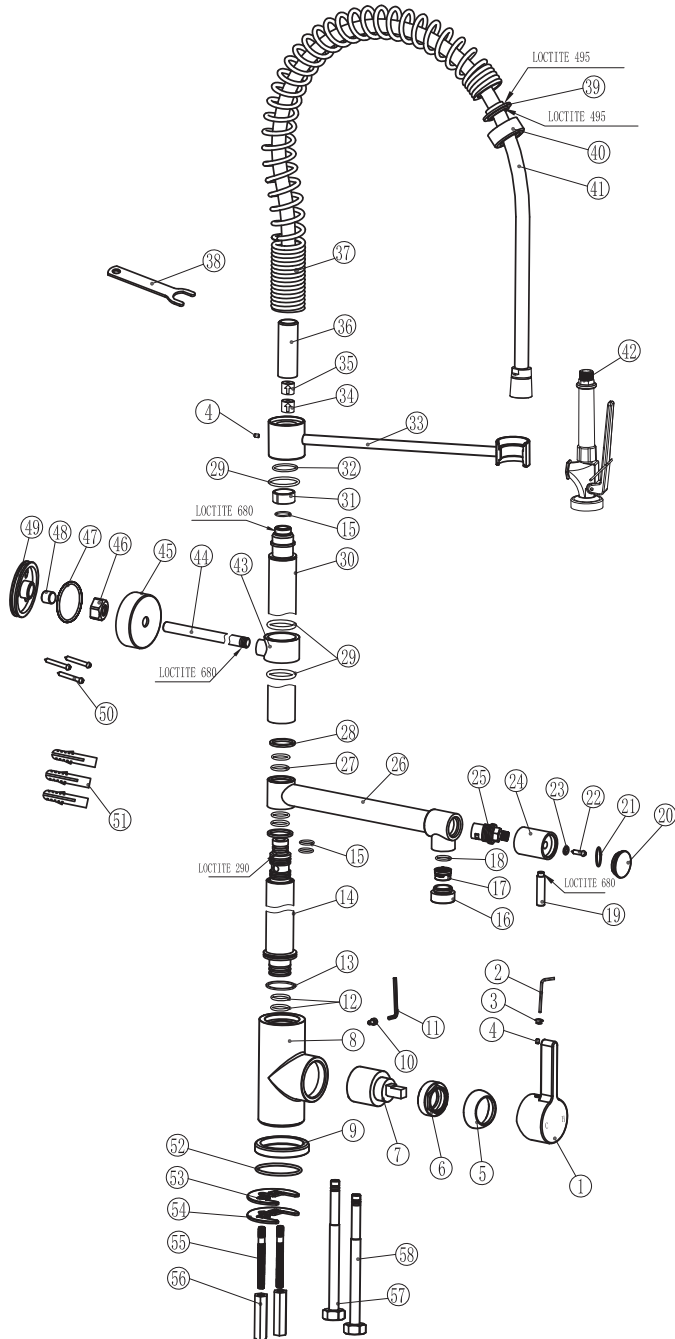
252452



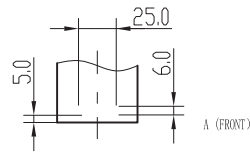
# UNIT COMPONENTS

| No. | Code     | Description                                | Qty |
|-----|----------|--|-----|
| 01  | 84060659 | Handle                                     | 1   |
| 02  | 93053    | S2. 5 Allen Key                            | 1   |
| 03  | 94433    | Handle Plug                                | 1   |
| 04  | 92042    | M5 x 5 Grub Screw                          | 2   |
| 05  | WA824-10 | M37 x 1.25 Cap                             | 1   |
| 06  | WA824-9  | M37 x 1.25 Lock Nut                        | 1   |
| 07  | K-35A    | Cartridge                                  | 1   |
| 08  |          | Body                                       | 1   |
| 09  | MX613-1  | Ø53mm Base Ring                            | 1   |
| 10  | 82000015 | M4 x 8 Grub Screw                          | 1   |
| 11  | 22700-9  | S3 Allen Key                               | 1   |
| 12  | 3200-7   | Ø22 x 2.5 O Ring                           | 2   |
| 13  | DJ097-3  | Washer                                     | 1   |
| 14  | 83060277 | Raser 1                                    | 1   |
| 15  | 94142    | Bs015 O Ring                               | 3   |
| 16  | 84060043 | Aerator Housing                            | 1   |
| 17  | 90253    | Aerator                                    | 1   |
| 18  | 76F-3    | Ø15.2 x 2.2 O Ring                         | 1   |
| 19  | 84060093 | Handle, Lever                              | 1   |
| 20  | TSF26-9  | Handle, Cap                                | 1   |
| 21  | SHA06-2  | Ø15 x 1.5 O Ring                           | 1   |
| 22  | 82000017 | M4 x 10 Screw                              | 1   |
| 23  | TSF26-7  | Ø12 x Ø4.3 x 1.2 Washer                    | 1   |
| 24  | TSF26-6  | Handle, Body                               | 1   |
| 25  | 84000132 | C/Disc Cartridge                           | 1   |
| 26  | 83060280 | Swivel Outlet, Brazed Assembly, Pot Filler | 1   |
| 27  | 81000095 | Ø20 x 2 O Ring                             | 4   |
| 28  | 81000012 | Thrust Washer                              | 2   |
| 29  | 81000002 | Bs121 O Ring                               | 3   |

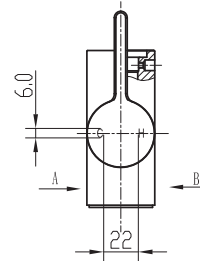
| No. | Code     | Description                 | Qty |
|-----|----------|-----------------------------|-----|
| 30  | 83060278 | Riser 2                     | 1   |
| 31  | 71438-8  | Washer                      | 1   |
| 32  | 94167    | Bs019 O Ring                | 1   |
| 33  | 83060279 | Support Arm                 | 1   |
| 34  | 93064    | Check Value 8.0L/Min        | 1   |
| 35  | 93024    | Check Value                 | 1   |
| 36  | 71438-9  | Extension Tube              | 1   |
| 37  | 84060063 | Spring, Coiled Hose Support | 1   |
| 38  | 84050533 | Spanner For Hose            | 1   |
| 39  | 81000011 | Washer For Spring           | 1   |
| 40  | 84060086 | Cover Plate For Spring      | 1   |
| 41  | 82000012 | Flexible Hose Assembly      | 1   |
| 42  | 82000026 | Trigger Spray Gun, Black    | 1   |
| 43  | 84060095 | Bracket                     | 1   |
| 44  | 84060094 | Bracket Arm                 | 1   |
| 45  | 84060078 | Bracket Cover               | 1   |
| 46  | 84000081 | Lock Nut, Bracket           | 1   |
| 47  | 94103    | Bs130 O Ring                | 1   |
| 48  | 84000080 | Lock Sleeve, Bracket        | 1   |
| 49  | 84000079 | Fixing Plate, Bracket       | 1   |
| 50  | 82000005 | M4 x 32 Screw               | 3   |
| 51  | 81000050 | Wall Plug                   | 3   |
| 52  | 94154    | Bs132 O Ring                | 1   |
| 53  | WA872-4  | Fixing Washer               | 1   |
| 54  | WA872-3  | Fixing Plate                | 1   |
| 55  | WA872-1B | M6 x 65mm Fixing Bolt       | 2   |
| 56  | WAS872-2 | M6 x 42 Fixing Nut          | 2   |
| 57  | 82000008 | Flexible Hose-Hot           | 1   |
| 58  | 82000007 | Flexible Hose-Cold          | 1   |



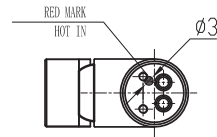
**Fig. 1**



**Fig. 2**



**Fig. 3**



**Fig. 4**

# INSTALLATION INSTRUCTIONS

## Important Note

Mixer must be installed to the requirements of AS/NZS 3500 by a qualified plumber. Your mixer comes to you already factory assembled and tested. We do not recommend the dismantling of any internal part of the mixer. The mixers are factory tested and sealed so as to give the best performance.

## Installation Instructions

1. Place the base o-ring (9) on the underside of the mixer body (8).
  2. Screw in the hot and cold flexible connectors (57 & 58) to the mixer body (8).
  3. Screw in the fixing bolt (55) into the mixer body (8) and tighten with a screw driver.
  4. Place the mixer unit over the pre-punched tap hole in the sink. Feed the flexible connectors through first.
  5. From underneath the sink or basin, slide on the U-shaped fixing washer (53), then the U-shaped fixing plate (54).
  6. Screw on the long hex nut (56) until the mixer base is firmly fixed to the sink. Tighten with a socket set or tube spanner.
  7. Connect the hot and cold flexible connectors to the inlet isolation valves.
  8. Fit the main riser assembly into the mixer body by pushing the twin o-ring spigot downward, then fit and tighten the allen key screw (10) with the allen key provided (11).
- Note: the wall support bar (44) can be slid up or down to the desired height to enable fixing to the wall or splashback.
9. Ensuring the riser is 90 degrees to the wall, measure and cut the wall support bar to a length with a 2 to 5mm gap from the wall.
  10. Slide on the chrome cover flange (45), nut (46), brass olive (48) & wall fixing plate (49) onto the wall support bar (44) as shown in exploded parts diagram.
  11. Fit the o-ring (47) to the groove on the fixing wall plate.
  12. Swing the wall support bar into position and mark the three holes for drilling into the wall.
  13. Swing the wall support bar to the left or right to enable the three holes to be drilled.
  14. For a masonry wall use the wall anchors provided (51) with screws (50).
  15. For a timber backed wall use the screws provided (50).
- Note: For a stainless steel splashback and/or cool room panel wall, ensure the fixing method used results in a solid fixing.
16. Swing the wall support bracket back into position, line up the holes and screw the fixing plate back to the wall. Tighten the brass nut and olive, ensuring a firm and solid installation. Slide the chrome cover plate over the wall plate.
- Note: The brass MI thread on the end of the end of the trigger spray hose swivels, so you do not have to spin the whole hose around when connecting the hose to the riser assembly.
17. Fit the flat washer (31) into the top of the riser assembly to ensure a water tight seal.
  18. Slide the spring return back to expose the MI brass connecting thread.



19. Using the open ended spanner provided, screw the brass M1 end of the flexible hose into the top of the riser assembly. Do up firmly but do not over tighten. Support the weight of the hose and spring while tightening to prevent cross threading and kinking of the hose.
20. Slide the spring back over the end of the hose until it sits on top of the riser assembly.
21. Fit the washer (39) to the other end of the flexible hose.
22. Screw the trigger spray unit to the flexible hose. Tighten firmly using a spanner on the flat section of the loose nut.
23. Turn on the water and test the unit.

#### **Operating Instructions**

When not in use, the mixer should be turned off at the mixer cartridge so the unit is not under mains pressure when unsupervised.

The hose must not be overextended or bent forcibly.

#### **IMPORTANT INFORMATION**

- The mixer can only be used on main pressure systems.
- The warranty is extended to the purchaser only and is not transferable.
- Misuse of the product is not covered by warranty.
- Use only suitable agents to clean the surface of your mixer. i.e. no abrasive cleaners.
- If the incoming water pressure exceeds 500kPa, it is recommended that you install an approved limiting valve.
- Approved operating temperature is not to exceed 80°C. Optimum operating temperature is 60°C.
- Minimum operating pressure is 150kPa.
- Maximum pressure is 500kPa, optimum working pressure is 350kPa.



# REECE PRODUCT QUALITY GUARANTEE



You have purchased a quality product from Reece Pty Ltd ABN 84 004 097 090 ("Reece"). This product is covered by a 5 year replacement product warranty and a 12 month warranty over spare parts and labour.

## 5 YEAR WARRANTY

This warranty covers faults in the product construction, material and assembly. Products which are within 5 years from the date of purchase, found upon inspection by an authorised Reece representative, to be defective in construction, material or assembly, will be repaired or exchanged with an equivalent product free of charge. Replaced items become Reece's property.

All replacement products will be available for collection without charge to the customer at the nearest Reece branch to the customer's location, or elsewhere as agreed between the customer and Reece.

## Labour and Spare Parts

The labour for the replacement of products and spare parts to which this warranty applies will be supplied by Reece or relevant supplier using licensed plumbers engaged by Reece or relevant supplier within 1 year from the date of purchase. Spare parts other than those listed in the Manufacturer's Provisions above, which are within 1 year from the date of purchase found upon inspection by an authorised Reece representative to be defective in construction, material or assembly, will be replaced free of charge.

## Warranty Conditions

This warranty will apply only under all of the following conditions:

- The item has been installed by a licensed plumber
- Failure is due to a fault in the manufacture of the product
- Proof of purchase (including the date of purchase) is provided
- The installation of the product is in accordance with the instructions provided

This warranty does not cover products purchased as an ex-display without being fully checked and tested for sale by the manufacturer.

This warranty does not include faults caused by:

- Unsuitable or improper use
- Incorrect installation or installation not in accordance with the instructions provided
- Installation or part installation by the purchaser or any person other than a LICENSED PLUMBER
- Normal wear and tear
- Inadequate or complete lack of maintenance
- Chemical, electrochemical or electrical influences
- Harsh detergents or abrasive cleaners used on product finishes

## EXCLUSIONS

To the fullest extent permitted by law, Reece excludes all liability for damage or injury to any person, damage to any property, and any indirect consequential or other loss or damage.

## CLAIM PROCEDURE

For all warranty queries customers are to contact the branch where the product was purchased. These details can be found on your purchase invoice.

Our goods come with guarantees that cannot be excluded under the Australian Consumer Law. You are entitled to a replacement or refund for a major failure and for compensation for any other reasonably foreseeable loss or damage. You are also entitled to have the goods repaired or replaced if the goods fail to be of acceptable quality and the failure does not amount to a major failure.

**Don't risk it, use a licensed plumber.™**

IF AFTER CHECKING THE  
INSTALLATION INSTRUCTIONS  
AND IMPORTANT  
INFORMATION, THE PROBLEM  
HAS NOT BEEN IDENTIFIED,  
PLEASE CONTACT GENTEC  
CUSTOMER SUPPORT ON:

**+61 2 9211 4422** or  
**[info@gentecaustralia.com.au](mailto:info@gentecaustralia.com.au)**



**WOLFEN™**

[reece.com.au/wolfen](https://reece.com.au/wolfen)