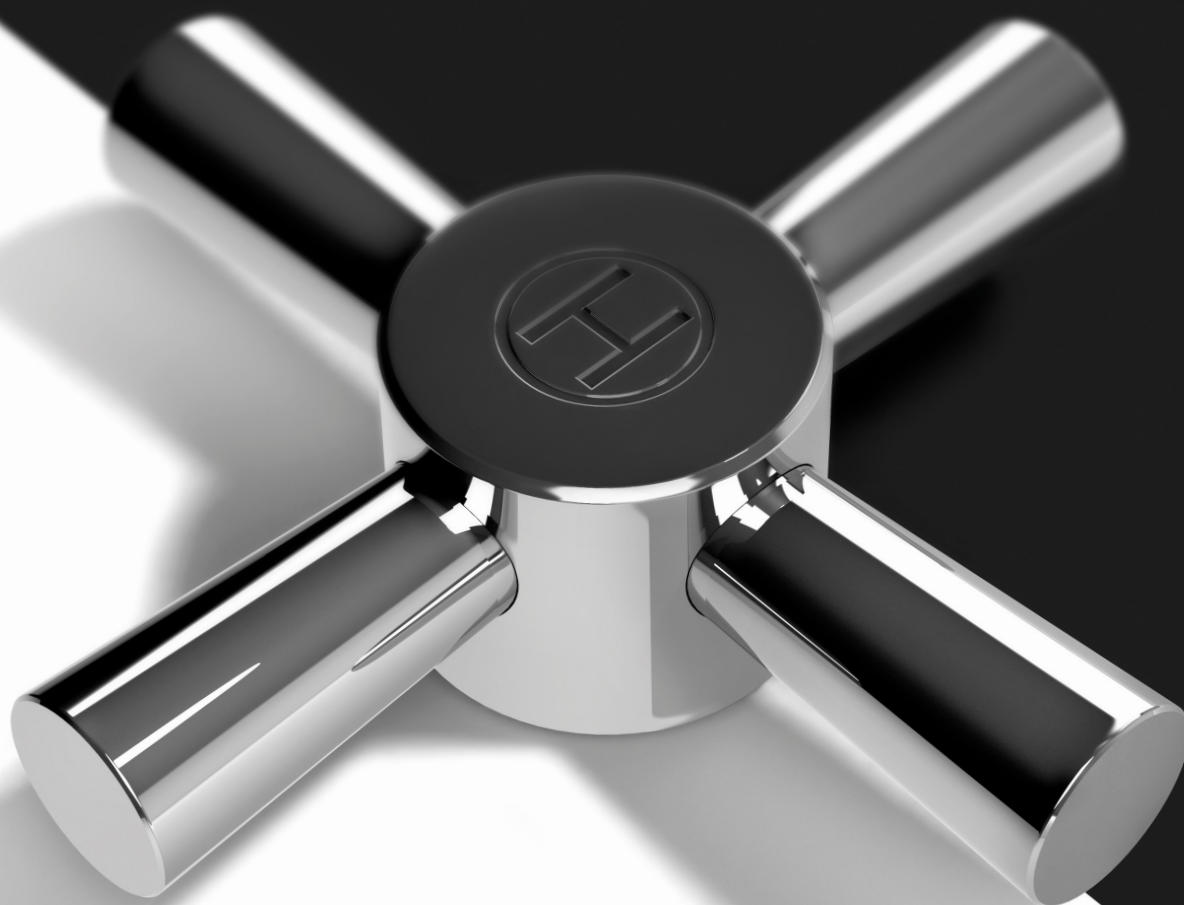




PHOENIX

TAPWARE, SHOWERS & ACCESSORIES



DESIGN /
QUALITY /
CUSTOMER SERVICE /

WHY CHOOSE PHOENIX?

Our founding principle is to develop new products of outstanding quality and originality.

Founded on the principles of design, quality and customer service, Phoenix has been producing tapware, showers and accessories since 1989. Our Design Team's expertise in style, innovation and first-class engineering, have established our prominent position in the Australian bathroom industry.

We offer tailored design solutions and bespoke manufacturing services to customers nationally.

Phoenix's sales staff and agents cover all metro and country areas of Australia and we pride ourselves on the service they and our customer service centre provide. We distribute nationally from our Victorian warehouse with satellite warehouses in Adelaide and Perth.



We have been trading in the tapware industry for 29 years. We put these years of knowledge and experience into the development of each Phoenix product to ensure we maintain the trust we have gained from customers since 1989.



'Australian design for Australian bathrooms'. Our collections are designed in Australia by our in-house design team, giving us the ability to manage and control the design, quality and performance of our products and respond quickly to market trends.



We have been internationally recognised for our innovative design with four iF Design awards, three Red Dot awards and two Good Design awards. This is a great accomplishment for our design team, who's hard work has been deservedly rewarded by such esteemed design forums.



A large range of our products have been awarded a 6 star WELS rating for water efficiency, to help Australian households conserve water and reduce water and energy bills.



Phoenix products are certified to meet Watermark regulations, confirming our products comply with the Plumbing Code of Australia and the relevant Australian Standards.



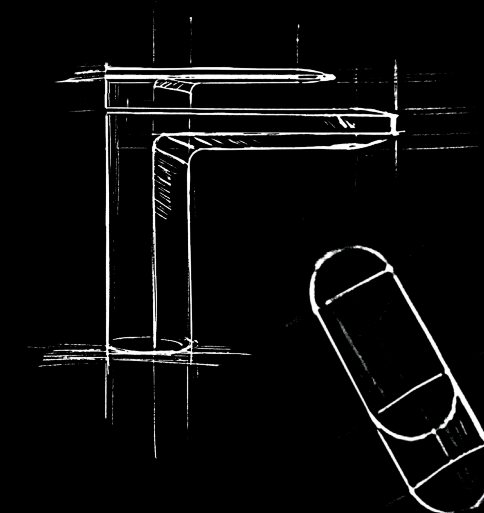
Phoenix tapware, bath outlets and accessories enjoy a 7 year product replacement warranty, a 15 year cartridge and shower warranty and a 1 year parts and labour warranty - Domestic use only. Phoenix heated towel rails enjoy a 3 year product replacement warranty - Domestic use only.

For full warranty details visit www.reece.com.au/warranties

DESIGN

Our relentless focus on design and innovation ensures customers will always enjoy the best bathroom experience.

An in-house design team gives us the ability to manage and control the design, quality and performance of our products and respond quickly to market trends. As a collective, our design team has over 100 years of experience in the design industry and have been recognised for their outstanding achievements throughout this time, with four iF Product Design awards, three Red Dot awards and two Good Design awards.



GEN X

The Gen X collection has the timelessness to ensure it will complement any room, whether traditional or contemporary. Complete the look by combining the extensive range of Gen X bathroom accessories.



Selected Gen X products available in both Lever and Cross Handle options.



WALL SINK SET GOOSENECK
Reach: 212mm
4 Star - 7lt/min



WALL SINK SET SQUARELINE
Reach: 279mm
4 Star - 7lt/min



HOB SINK SET GOOSENECK
Reach: 200mm
3 Star - 8lt/min



HOB SINK SET SQUARELINE
Reach: 240mm
3 Star - 8lt/min



BASIN SET GOOSENECK
Reach: 130mm
5 Star - 5.5lt/min

Chrome



BASIN SET SQUARELINE
Reach: 157mm
5 Star - 5lt/min



BATH SET CURVED OUTLET
Reach: 200mm



COMMANDER SHOWER SET
3 Star - 8lt/min
Lever Handles available



WALL TOP ASSEMBLIES
Washing machine stops available



LEVER WALL SINK SET GOOSENECK
Reach: 280mm
3 Star - 8lt/min



LEVER BASIN SET GOOSENECK
Reach: 130mm
5 Star - 5lt/min



LEVER BATH SET CURVED OUTLET
Reach: 200mm



LEVER WALL TOP ASSEMBLIES
Washing machine stops available



TOILET ROLL HOLDER
W 130mm x D 100mm
Double Toilet Roll Holder
available



**TOILET ROLL HOLDER
(DOUBLE FIXING)**
W 140mm x D 90mm



ROBE HOOK
D 45mm



HAND TOWEL HOLDER
W 180mm x D 80mm



SOAP DISH
W 140mm x D 120mm



SHOWER SHELF
W 300mm x D 120mm



SINGLE TOWEL RAIL
D 80mm
Available in sizes: 600mm, 760mm, 900mm



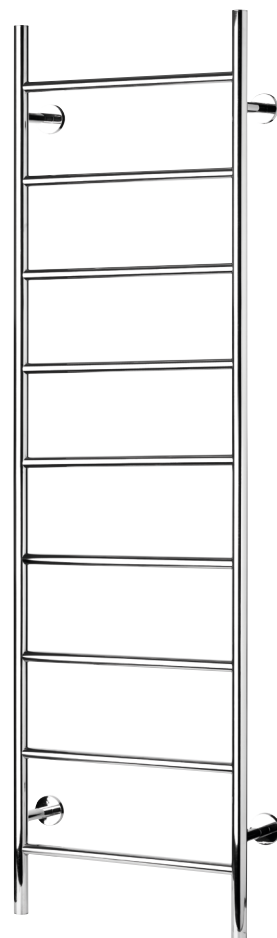
TOWEL RACK
W 500mm x D 260mm



DOUBLE TOWEL RAIL
D 140mm
Available in sizes: 600mm, 760mm, 900mm



SHOWER BASKET
W 300mm x D 129mm
x H 86mm
Soap Basket available



TOWEL LADDERS
H 700mm x W 500mm x D 108mm
H 700mm x W 750mm x D 108mm
H 1500mm x W 400mm x D 100mm



HEATED TOWEL RAIL
Material: Stainless Steel 304 grade
Finish: Polished
IPX5 rating
Available as plug in or hard wired,
all fittings supplied
H 700mm x W 500mm x D 108mm
H 700mm x W 750mm x D 108mm

PRISTINE

The Pristine 2-in-1 Filtered Water Sink Mixer cleverly combines filtered tap water with a superbly styled sink mixer, designed to deliver drinking water which is safe, clean, clear and odourless. Pristine delivers both filtered and unfiltered water through two different lever handles, giving you the flexibility to select what water you use and when you use it.

With an advanced filter system that is hidden out of sight, the Pristine uses a dual cartridge filter system to deliver the cleanest, most pure water for consumption.



**2-IN-1 FILTERED WATER
SINK MIXER**
5 Star - 6lt/min
Available with or without
complete water filter kit

Chrome



CARBON BLOCK CARTRIDGE
Removes bad tastes and neutralises odours by removing chlorine, pesticides, herbicides, chemicals, heavy metals, parasites and bacteria (including cryptosporidium, giardia and turbidity), down to 5 micron.

CARTRIDGE REPLACEMENT
Based on average rates of water quality and usage, it is recommended that you change your filter cartridges every six months or when you experience a drop in water pressure.

RONA FLOW CARTRIDGE
A multi-layered cartridge featuring four different grades of fibre designed to trap all levels of particles down to 1 micron. Allows for higher flow rate of water, without compromising contaminant retention.



FLOW

Add a touch of elegance to any room with a Phoenix Tapware outlet from our unique contemporary collection. With their organic, free form design, each outlet in this range can create a stunning focal point with effortless functionality and style.



SLEEK HOB BATH OUTLET
Reach: 200mm



HOB BATH OUTLET - CURVE
Reach: 200mm



WALL BATH OUTLET - SQUARE SLIT BOX 135 X 80MM
Reach: 80mm



WALL BATH OUTLET - ANGLE SLIT BOX
Reach: 80mm



WALL BATH OUTLET - SQUARE SLIT BOX 190 X 110MM
Reach: 110mm



WALL BATH OUTLET - LARGE
Reach: 180mm



WALL BATH OUTLET - SQUARE EDGE
Reach: 180mm



WALL BATH OUTLET - SMALL
Reach: 180mm



SLEEK WALL BATH OUTLET
Reach: 200mm

LOOKING FOR INSPIRATIONAL IMAGERY?

Follow Phoenix on social media and visit the inspirational gallery on our website for all the latest trends in bathrooms and kitchens. We share project imagery and inspiration of the highest calibre, crediting the work of those who use our product to create incredible spaces.



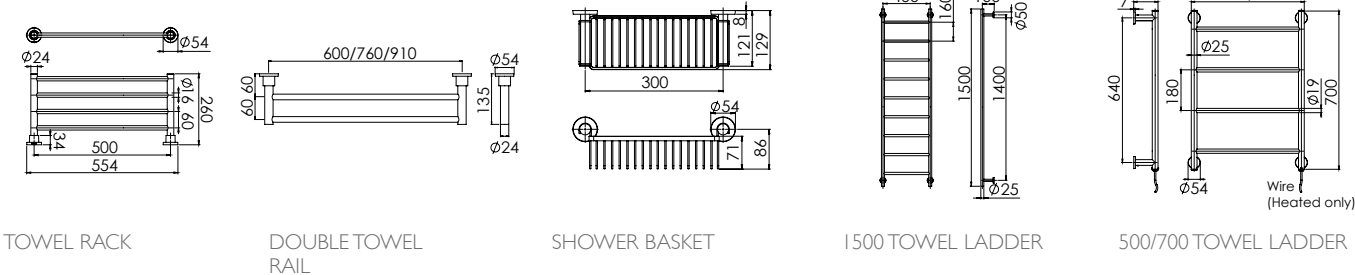
GEN X



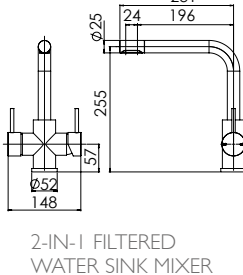
GEN X



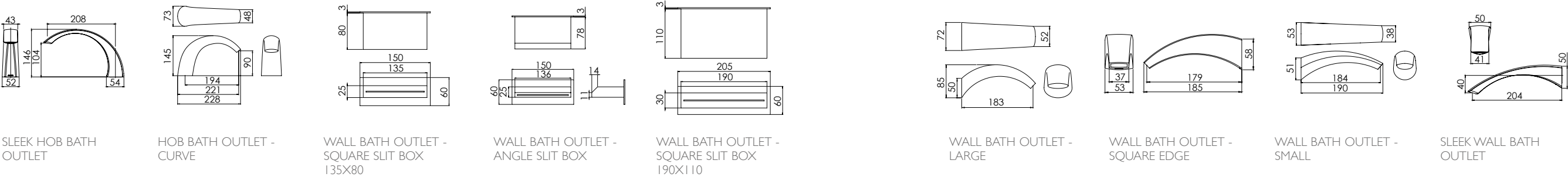
GEN X



PRISTINE



FLOW



www.phoenixtapware.com.au

Bathroom Happiness™

Visit any one of our 300 showrooms around Australia for all the latest products, concepts and inspiration to make your bathroom whatever you want it to be. And for the ultimate bathroom experience, go to one of our new bathroom life™ stores where you will find the biggest range of leading Australian and international brands.

Call 1800 032 566 or visit www.reece.com.au for your nearest bathroom showroom.

Due to limitations in the printing process the colours in this brochure are a guide only. The manufacturer/distributor reserves the right to vary specifications or delete models from their range without prior notification. The manufacturer/distributor takes no responsibility for printing errors. Phoenix Tapware products enjoy a 7 year product warranty and a one year parts and labour warranty – domestic use only.

V18 [BROCHURE CODE 9501533]

