

# Hideaway Active

The intelligent urinal



- Automatic touch-free flushing
- Self-diagnosing technology
- WELS 6 Star efficiency
- Fast and easy installation

With a range of self-diagnostic features designed to maximise water efficiency, the Hideaway Active Urinal delivers exceptional value for commercial or residential use.

With 4 flushing modes available and using just 0.8 litres per flush, Hideaway Active is the eco friendly solution that dramatically reduces maintenance hassles. Easy installation into standard 90mm stud walls offers total flexibility for all types of applications.

Incorporating superior detection technology the Siphonic Trap offers an unrivalled level of control via the Control Unit, with diagnostics continually providing feedback on everything from battery life to valve life and usage rates.

## Reece. Works for you.™

Call **1800 032 566** or visit **[www.reece.com.au](http://www.reece.com.au)** for your nearest Reece store.  
Due to limitations in the printing process the colours in this brochure are a guide only.

The manufacturer/distributor reserves the right to vary specifications or delete models from their range without prior notification. The manufacturer/distributor takes no responsibility for printing errors.  
All products enjoy a product replacement warranty. For full warranty details visit [www.reece.com.au/productquality](http://www.reece.com.au/productquality)

V1 [BROCHURE CODE 2130230]

hideaway



# hideaway

The Intelligent Urinal



# What makes it so smart?

## The Control Unit

Easy to diagnose any problems during routine maintenance or service via the control unit.

A Battery powered model can be used when mains power cannot be accessed at the point of installation.

Provides feedback on battery life, usage and valves.

Push button setting allows flush time to be adjusted based on supply pressure.

Easy shut down mode for when manual cleaning is required, and then will automatically restart 30 minutes later.

The Hideaway Active urinal features four different touch free flushing modes to suit a variety of uses.



### Normal Mode

- One flush after every user



### Saver Mode

- One flush after every 3 users
- Mode will automatically switch from normal to saver when there are crowds, or during peak periods
- One minute of non-use will switch the control unit back to normal mode.



### Eco Mode

- One flush after every 3 users or every 15 minutes (which ever comes first)



### Janitors flush

- Triggers an automatic hygiene flush after 48 hours of non-use. Perfect for long weekends or holiday periods

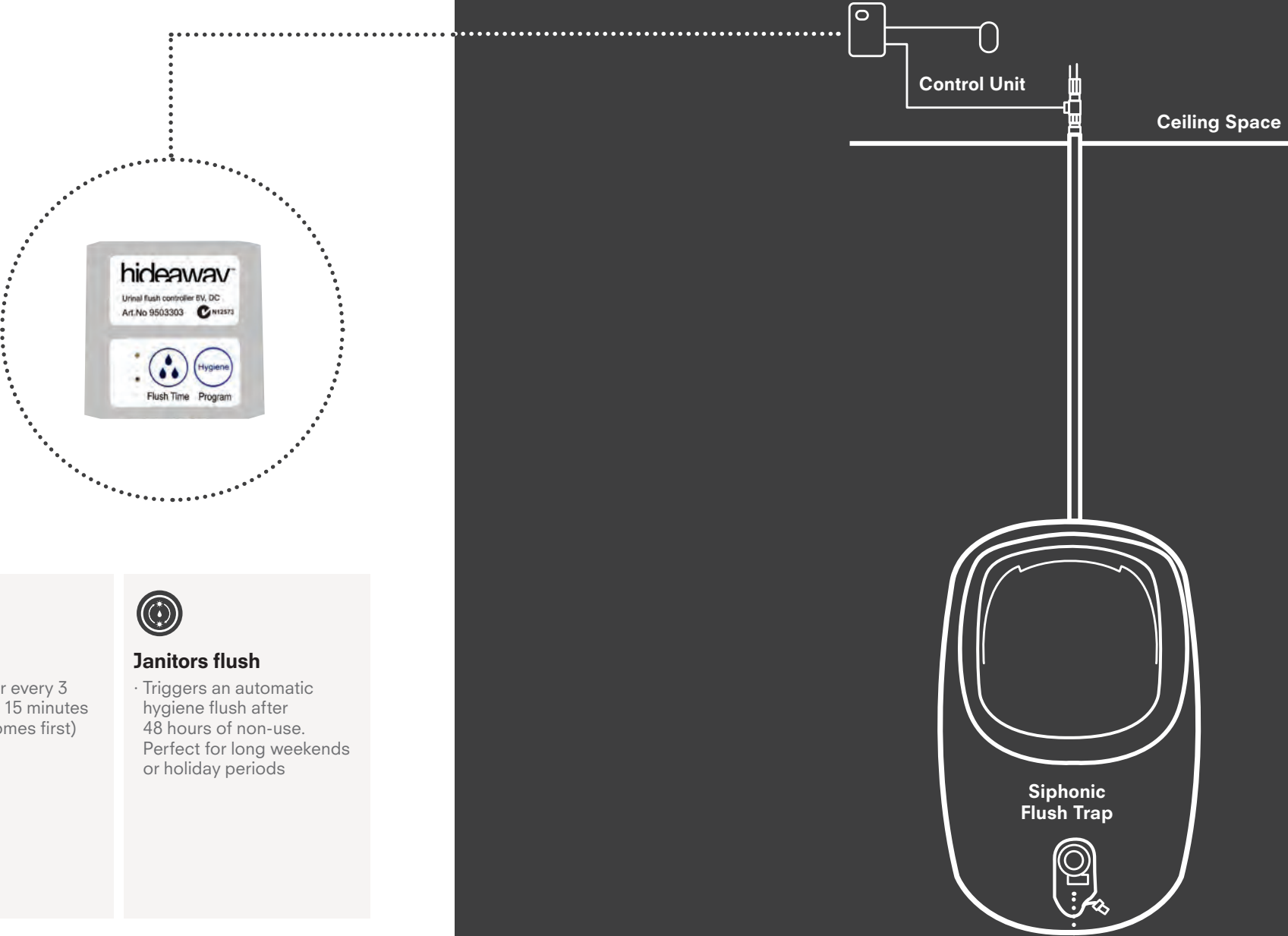


## Siphonic Flush Trap

Automatic touch-free flush ensures maximum hygiene and water efficiency.

Sensors detect urine or change in temperature (not movement) to activate a flush, so there are no false detections, reducing water wastage.

The sensor can detect if the urine bowl is filled with liquid or blocked, and will stop flushing to prevent overflow.



## The perfect fit

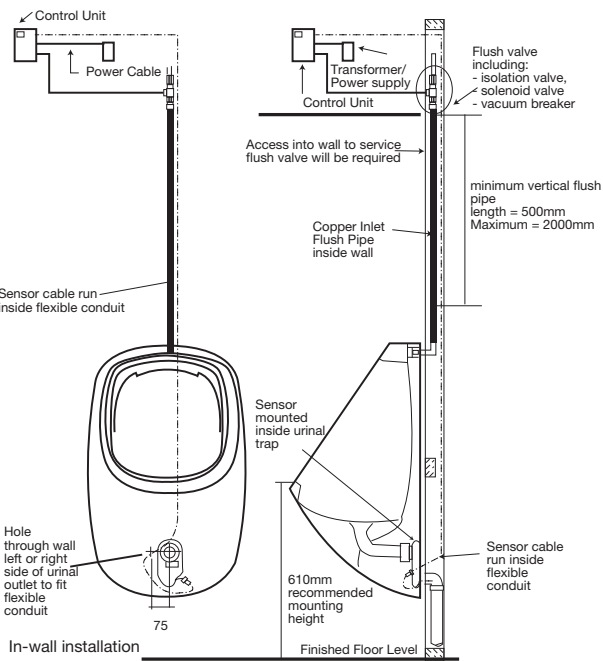
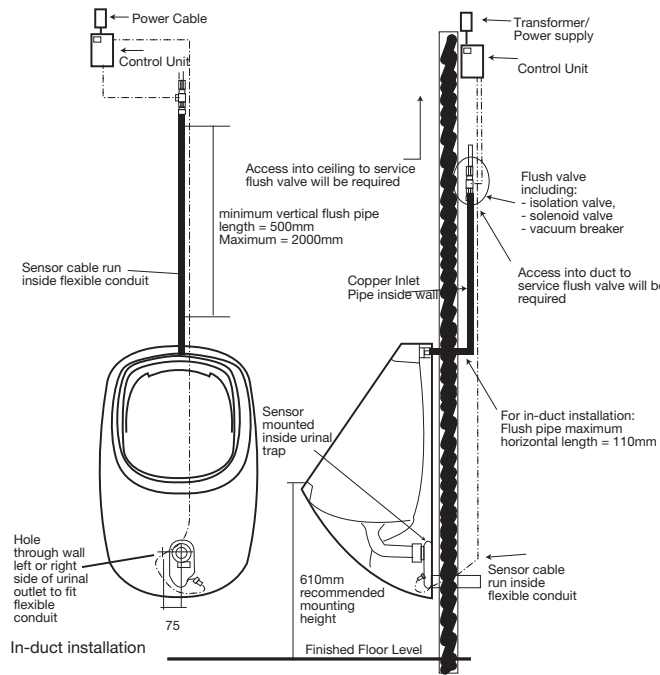
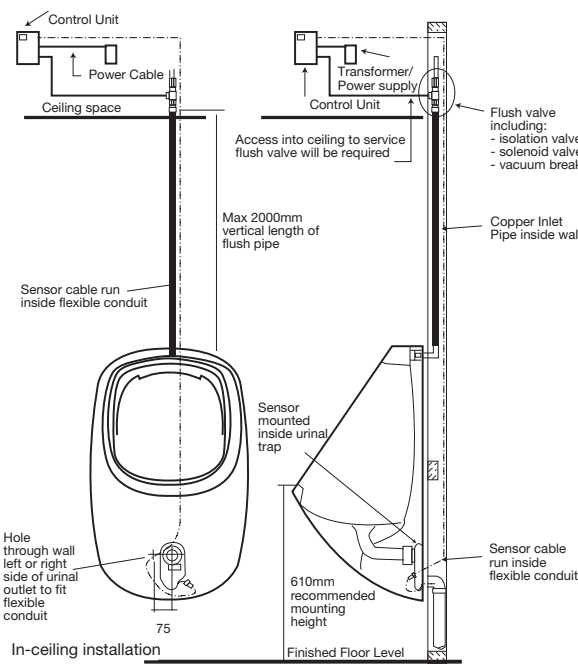
The hideaway active urinal and siphonic trap have been purposely designed to fit into a standard 90mm stud wall for fast and simple installation - with options available for in-ceiling, in-duct and in-wall installation of the control unit.

## 6 Star water efficiency

Using just 0.8 litres per flush, the Hideaway Active has been given a WELS 6 star rating - the gold standard for water efficiency in Australia. This makes it the perfect choice for applications where water conservation is a high priority.



# Technical Specifications



**Reece Product Quality Guarantee**  
Hideaway Active Urinal has a 7 year product replacement warranty. For full warranty details visit [www.reece.com.au/warranties](http://www.reece.com.au/warranties)