

KADO

ERA ALL DOOR (SINGLE CURVED END)



12mm benchtop / Feather Grey



20mm benchtop / Royal Battle Blue



50mm benchtop / Red Marble



90mm benchtop / Wolfram Green

SPECIFICATIONS

Recommended Use	Domestic, Hotel and Commercial
Vanity Top Material	12mm Durasein, 20mm Cherry Pie or 20mm Caesarstone Mineral (Surcharge applies). 50mm or 90mm Thick Benchtop available (Durasein only) Basin sold separately. For more information please refer to the Colour Finish and Material Variations Document.
Vanity Unit Material	MDF MR E0 (Medium Density Fibreboard, Moisture Resistant, Rated Emission Level E0)
Vanity Colour Variations	Matte White, Matte Feather Grey, Matte Black, Matte Royal Battle (Blue), Matte Wolfram (Green), Matte Red Marble
Interior Finish	Fresh White
Tap Hole Availability	0, 1 or 3 Tap Holes (pending basin selection)
Waste	Chrome Universal Plug & Waste 40mm Outlet (included)
Fixing	Bolted/Screwed to the wall by a licensed tradesperson (Fixings not included).
Doors	Hettich soft-close hinged door(s)
Inclusions	150mm radius, curved push-to-open shaker door. One end flat panel, suitable against wall installation.
Handle Options	Handle Options: Blaze Handle, Cooper Knob or Seashell.
or	For finishes available refer to the Colour Finish and Material Variations Document.
Push-to-Open Door(s)	OR Push-to-Open.

Disclaimer: Products in this specification manual must by regulation be installed by licensed and registered trade people. The manufacturer/distributor reserves the right to vary specifications or delete models from their range without prior notification. Dimensions are nominal measurements only. Dimensions and set-outs listed are correct at time of publication however the manufacturer/distributor takes no responsibility for printing errors.

Tech Page Version 1

To see the complete KADO range go to
www.reece.com.au/bathrooms



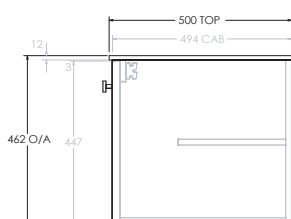
KADO

ERA ALL DOOR (SINGLE CURVED END)

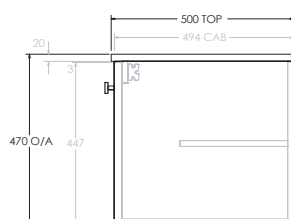
STANDARD SIZES	600mm	750mm	1050mm	1350mm	1650mm
Width (mm)	605	755	1055	1355	1655
Depth (mm)	500	500	500	500	500
Height (mm) - 12mm Benchtop (Durasein Only)	462	462	462	462	462
Height (mm) - 20mm Benchtop (Cherry Pie / Caesarstone Mineral)	470	470	470	470	470
Height (mm) - 50mm Benchtop (Durasein Only)	500	500	500	500	500
Height (mm) - 90mm Benchtop (Durasein Only)	540	540	540	540	540
Number of Doors (Including Curved End Door)	2	3	3	4	5
Basin Configurations	Centre	Centre	Centre/Offset	Centre/Offset/ Double	Centre/Offset/ Double

Side View - With Benchtop Options

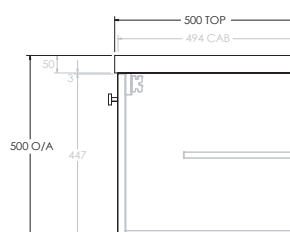
12mm
(Durasein)



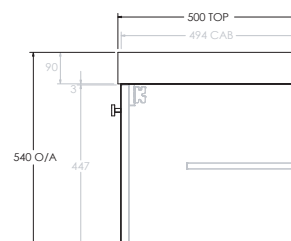
20mm
(Cherry Pie & Caesarstone Mineral)



50mm
(Durasein Only)



90mm
(Durasein Only)



KADO

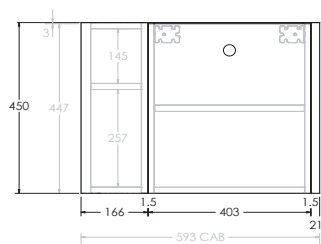
ERA ALL DOOR (SINGLE CURVED END)

Single curve left shown, right is same but mirrored (Please indicate curve side on order form)

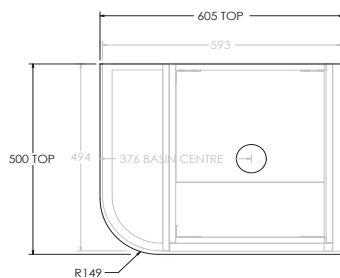
Below Front View specs are for cabinet details only, refer to page 2 for overall heights and benchtop options.

600mm

Front View

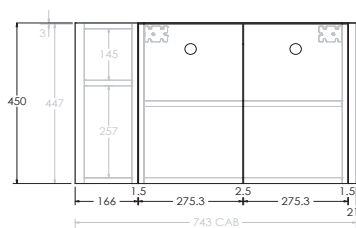


Top View
Centre

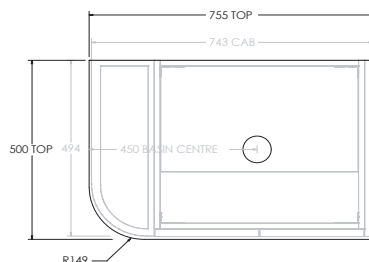


750mm

Front View

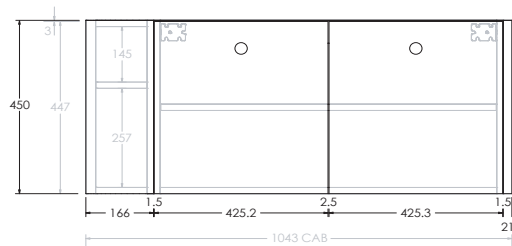


Top View
Centre

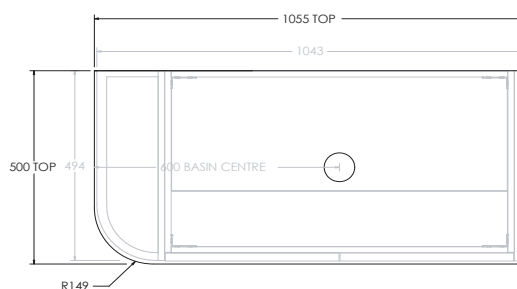


1050mm

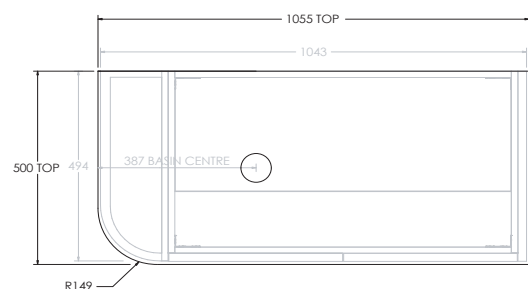
Front View



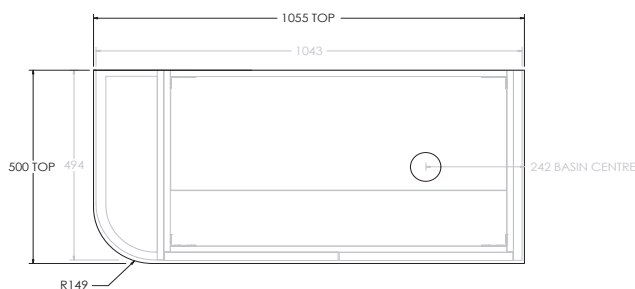
Top View
Centre



Left



Right



KADO

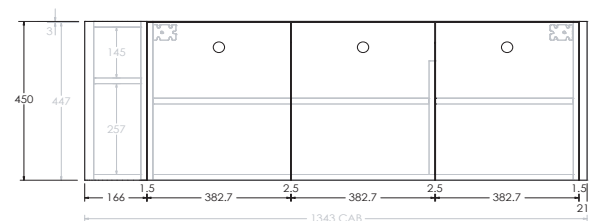
ERA ALL DOOR (SINGLE CURVED END)

Single curve left shown, right is same but mirrored (Please indicate curve side on order form)

Below Front View specs are for cabinet details only, refer to page 2 for overall heights and benchtop options.

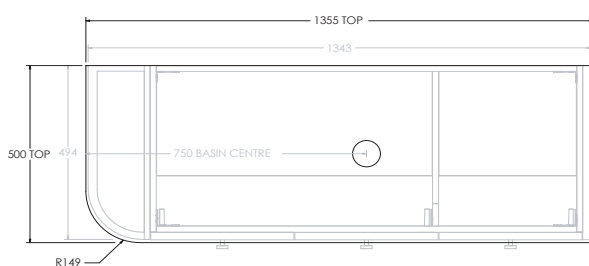
1350mm

Front View

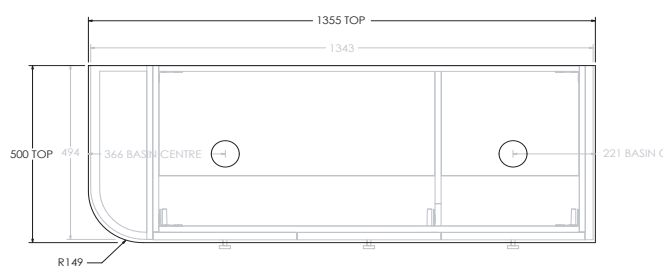


Top View

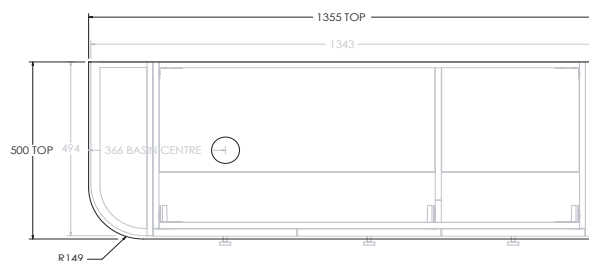
Centre



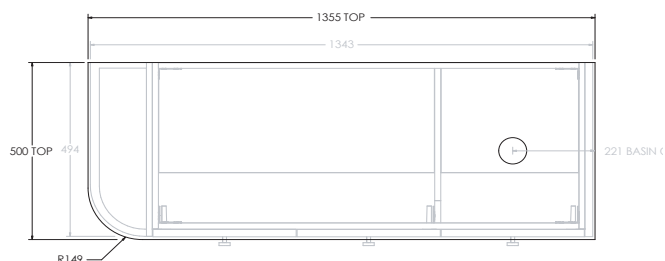
Double



Left



Right



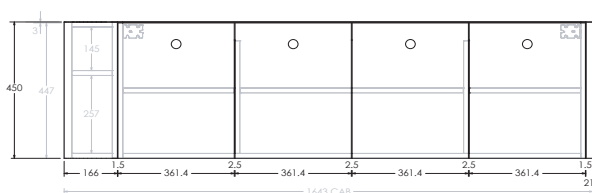
ERA ALL DOOR (SINGLE CURVED END)

Single curve left shown, right is same but mirrored (Please indicate curve side on order form)

Below Front View specs are for cabinet details only, refer to page 2 for overall heights and benchtop options.

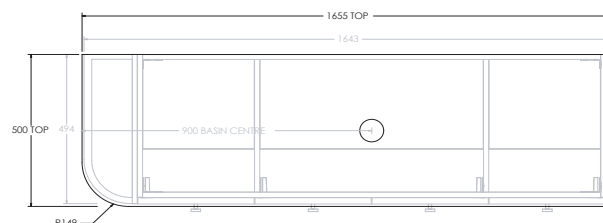
1650mm

Front View



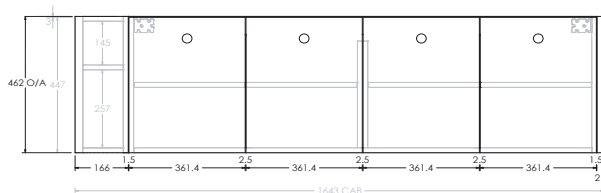
Top View

Centre

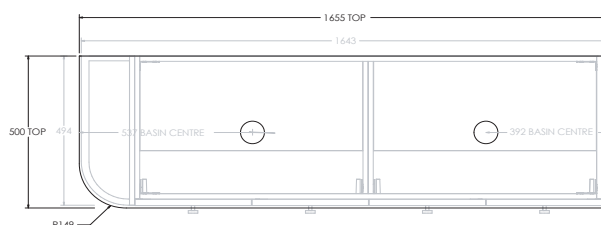


1650mm

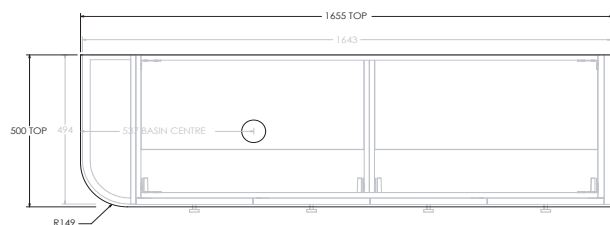
Front View



Double



Left



Right

