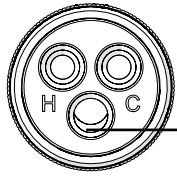


### Swivel Hob Set

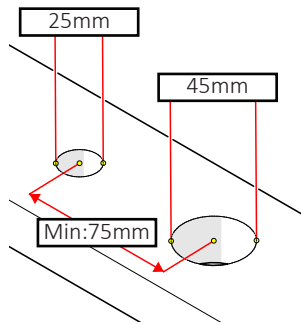
- 1** Drill 25mm and 45mm Holes into bechtop with a minimum pitch of 75mm.

Install Hoses using the H&C indicators as a guide.

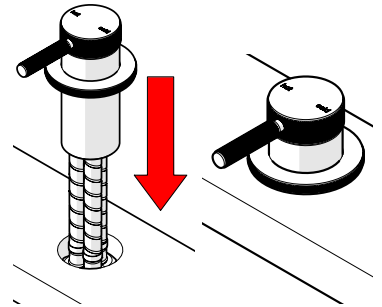


**Benchtop Thickness:**  
Min: 15mm  
Max: 35mm

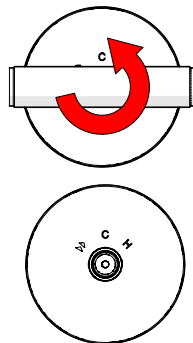
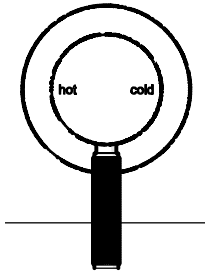
OUTLET



- 2** Feed Hoses Though benchtop until dress plate is flush with bench.



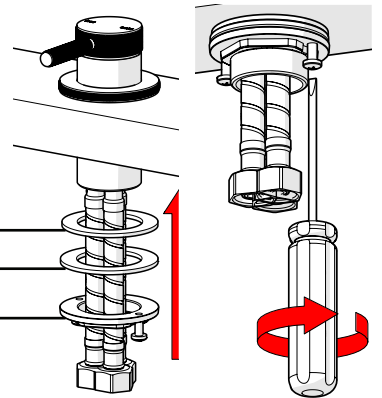
- 3** Ensure hanbdles are in desired Position before installing fixing kit.



- 4** Slide both the rubber washer and steel washer over threaded tail. Fasten locknut with a wrench.

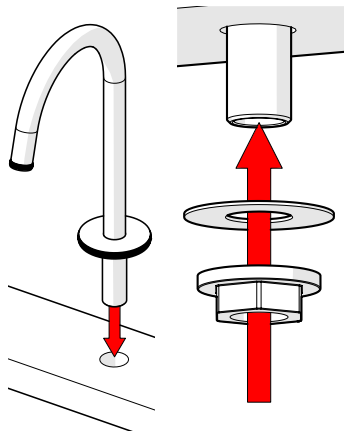
Use a screwdriver to tighten locking screws.

RUBBER WASHER  
STEEL WASHER  
LOCKNUT



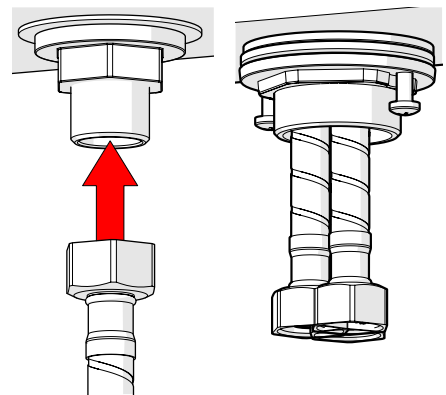
- 5** Feed Outlet Threaded Tail through 25mm hole in benchtop.

Fasten using supplied washer and plastic locknut.



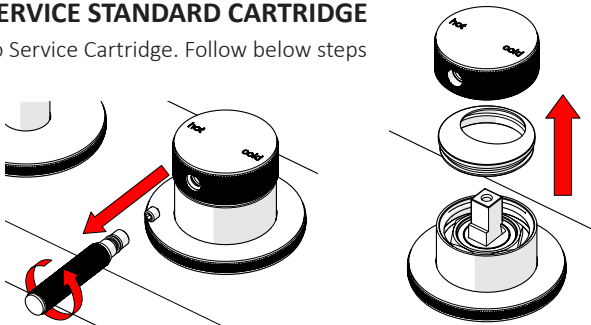
- 6** Install OUTLET hose to Spout. Connect HOT & COLD hoses to water supply.

**TEST AND CHECK FOR LEAKS.**



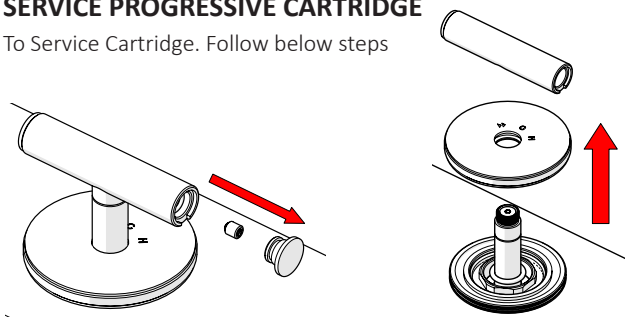
#### S SERVICE STANDARD CARTRIDGE

To Service Cartridge. Follow below steps



#### S SERVICE PROGRESSIVE CARTRIDGE

To Service Cartridge. Follow below steps



### Care Details

We recommend the use of soapy water or approved cleaners. This product should not be cleaned with abrasive materials. Damage caused by any improper treatment is not covered by the product warranty. Refer to Warranty Conditions

Installation should comply with Australian standard AS3500.1 or relevant local authority requirements. Showers may not be suitable for use within:

- Gravity-fed water systems
- Some instantaneous hot water systems

Any flow controller incorporated in the outlet to be tightened to prevent removal by hand. As Per AS3718

**Plumbers, please ensure a copy of the installation instruction is left with the end user for future reference.**

