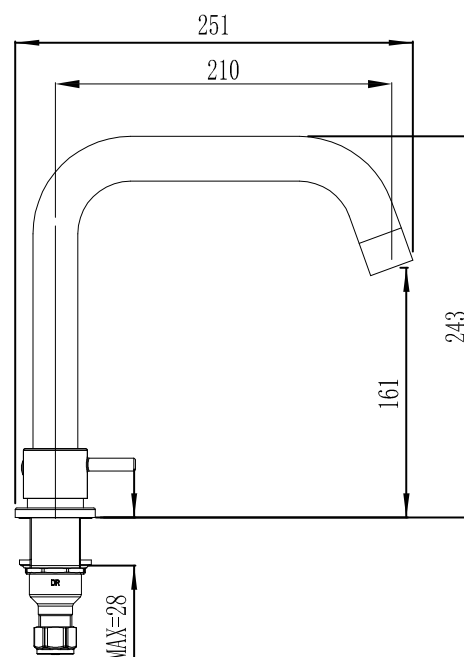
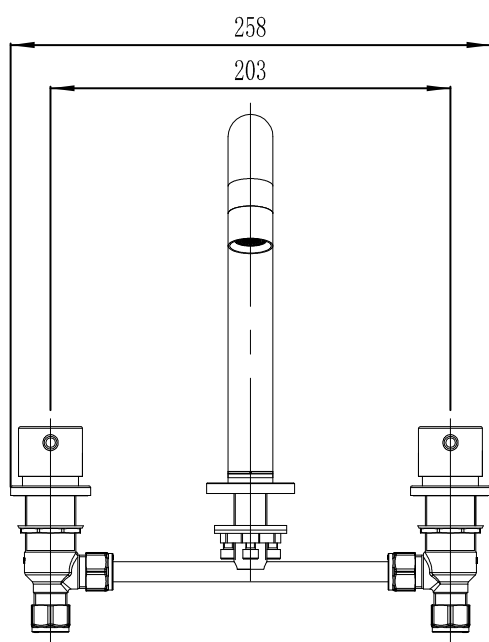


MIZU

DRIFT HOB SPA SET



Dimensions are nominal measurements only.

SPECIFICATIONS

Recommended use	Domestic, hotel and commercial.
Colour	Chrome
Pressure Rating	<p>Maximum continuous operating pressure 1000kPa.</p> <p>For best performance and longer life we recommend 150-500kPa.</p> <p>Hot and cold water inlet pressure should be equal.</p>
Temperature Rating	Maximum continuous working temperature 80°
Suitable Hot Water Units	<p>Storage Tank: Yes</p> <p>Continuous Flow: Yes</p> <p>Gravity Feed: Yes</p>



To see the complete MIZU range go to www.reece.com.au/bathrooms

CLEANING RECOMMENDATIONS

We recommend the use of soapy water or approved cleaners.

This product should not be cleaned with abrasive materials.

Damage caused by any improper treatment is not covered by the product warranty- refer to Warranty Conditions.

MIZU

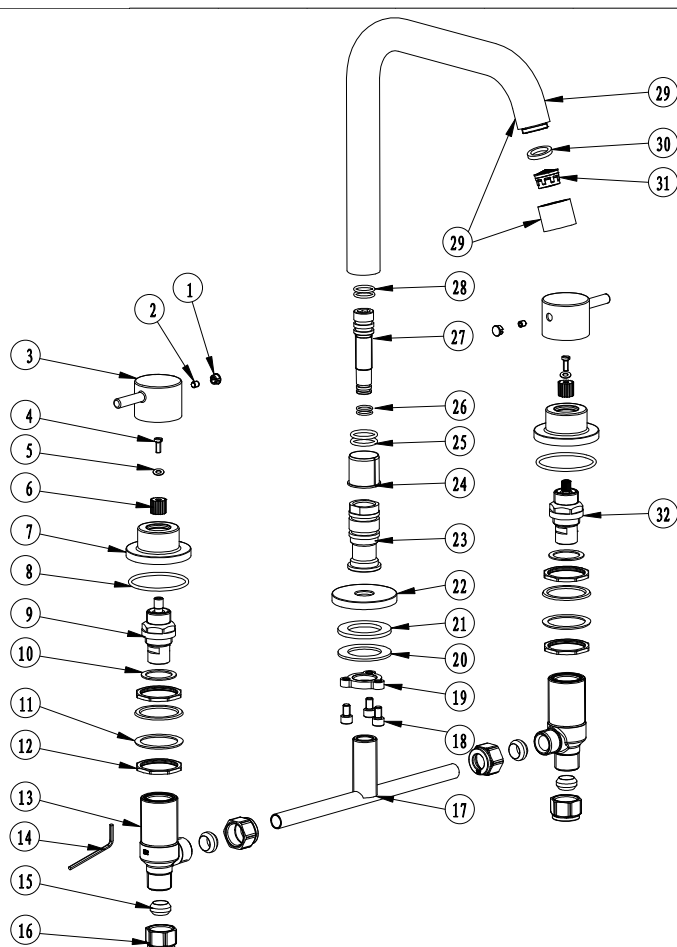
DRIFT HOB SPA SET

INSTALLATION

Note

Ensure water lines are flushed free of impurities

1. Attach stop bodies (14) to tee-piece (17). Fully tighten connections, but do not overtighten.
2. Insert stop bodies through basin holes ensuring that housing thread extends above basin level
3. Adjust and fix stop bodies (14) into position using locking nuts (12 & 19)
4. Separate cartridge locknut and fibre washer from cartridge (9).
5. Grip the cartridge on the hexagonal flats and install cartridge fully into stop body until it comes to a firm stop. Do not tighten cartridge into position by rotating spindle.
6. Turn spindle to off position and turn on water at mains. Check that cartridge has fully seated. If dripping occurs then gently tighten cartridge further until dripping stops.
7. Firmly tighten cartridge fibre washer and cartridge locknut into position.
8. Place o-ring (8) into base of cartridge bonnet (7) and secure down onto cartridge by tightening bonnet by hand.
9. Turn cartridge to fully OFF position.
10. Assemble handle (3) onto cartridge (9) and secure in place by fixing with grub screw (2).
11. Ensure rubber washer is inserted in underside of spout base flange (21)
12. Install outlet.



Exploded View

Item	Description	Item	Description
1	Plug	16	Nut
2	Grub Screw	17	Tee Piece
3	Handle	18	Bolt
4	Screw	19	Lock Nut
5	Washer	20-21	Washer
6	Spline	22	Dress Ring
7	Bonnet	23	Connector
8	O-Ring	24	Sleeve
9	Cartridge (Hot)	25-26	O ring
10	Fibre Washer	27	Outlet Spigot
11	Nylon Washer	28	O-Ring
12	Lock Nut	29	Spout
13	Stop Body	30	Washer
14	Allen Key	31	Neoperl Aerator
15	Olive	32	Cartridge (Cold)

Plumbers, please ensure a copy of the installation instructions is left with the end user for future reference