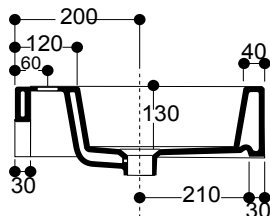
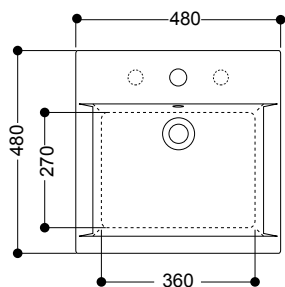
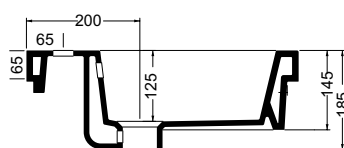
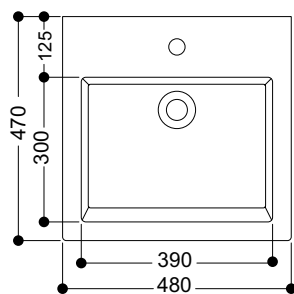


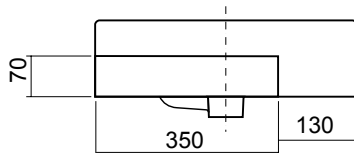
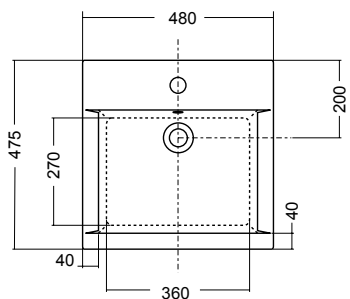
# AXA HOX BASINS



**Axa Hox Counter/Wall Basin**



**Axa Hox Semi Inset Basin**



**Axa Hox Semi Recessed Basin**

To see the complete Axa range go to [www.reece.com.au/bathrooms](http://www.reece.com.au/bathrooms)

Disclaimer: Products in this specification manual must by regulation be installed by licensed and registered trade people. The manufacturer/distributor reserves the right to vary specifications or delete models from their range without prior notification. Dimensions and set-outs listed are correct at time of publication however the manufacturer/distributor takes no responsibility for printing errors.

Tech Page Version 3

# AXA HOX BASINS

## SPECIFICATIONS

<b>Recommended use</b>	Domestic, hotel and commercial
<b>Material</b>	Vitreous china
<b>Colour</b>	White
<b>Integral overflow</b>	Yes (Chrome overflow ring)
<b>Taphole availability</b>	Counter/Wall Basin - 0, 1 and 3 Taphole Semi Inset Basin - 1 and 3 Tapholes Semi Recessed Basin - 1 and 3 Taphole
<b>Capacity</b>	Counter/Wall Basin - 9 Litres Semi Inset Basin - 7.4 Litres Semi Recessed Basin - 9 Litres
<b>Weight</b>	Counter/Wall Basin - 15 kg Semi Inset Basin - 15.5 kg Semi Recessed Basin - 15 kg
<b>Plug and waste</b>	32x40 Overflow Waste (not supplied)
<b>Fixing</b>	Sealed to countertop with waterproof sealant Fixing bolts supplied with wall basin installation
<b>Cut out template</b>	Supplied with basin

## CLEANING RECOMMENDATIONS

We recommend the use of soapy water or approved cleaners.

This product should not be cleaned with abrasive materials.

Damage caused by any improper treatment is not covered by the product warranty - refer to Warranty Conditions.

# AXA HOX COUNTER/WALL BASIN

## INSTALLATION INSTRUCTIONS

### Counter

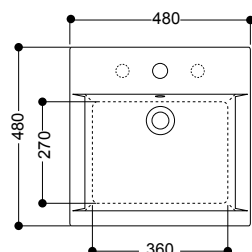
Note: Rear of basin is unglazed. Any counter top installation is recommended against the wall.

1. Cut out bench top as per template supplied ("D").
2. Fit selected tapware and waste supplied to basin. Ensure waste is siliconed around rim.
3. Apply waterproof sealant to rim of basin.
4. Locate basin complete with fittings onto bench top and press firmly all around.
5. Remove excess sealant.
6. External edges can be joint sealed using flexible sealant ensuring to wipe off any excess.

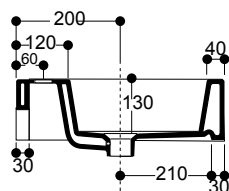
### Wall

Note: If fixing to timber framed walls or partitioning the wall should be reinforced with noggin to receive fixing bolts.

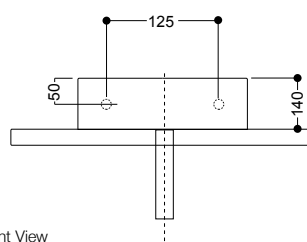
1. Drill holes into wall at desired height and fixing centres and install fixing bolts supplied (fig 1 and 3).
2. Fit selected tapware to basin. Fit the supplied overflow waste to basin ensuring it is sealed with silicone on top.
3. Carefully align basin complete with fittings onto protruding bolts.
4. Insert nylon bushes and locking nuts supplied and partially tighten locknuts to hold basin into position. Make minor adjustments at this stage and ensure basin is level and then fully tighten lock nuts. Do not overtighten!
5. If desired all visible external edges can be joint sealed using flexible sealant ensuring to wipe off any excess.



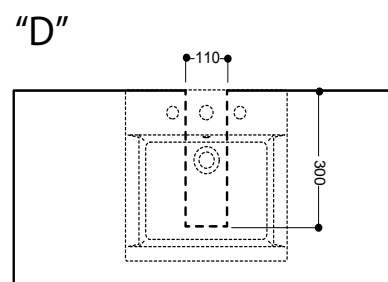
Top View



Side View



Front View



Plumbers, please ensure a copy of the installation instructions is left with the end user for future reference

# AXA

## HOX SEMI INSET BASIN

### INSTALLATION INSTRUCTIONS

**Note**

Please consider installed position of basin, to ensure minimal water splash from tapware selected.  
Back edge of basin is fully glazed.

1. Position supplied cut out template onto the bench and mark off the counter installation.
2. Cut hole in bench to template size.
3. Fit selected waste to basin. Ensure waste is sealed top and bottom.
4. Apply waterproof sealant (not supplied) to the rim of the basin.
5. Fit basin onto the bench top and press firmly all around to achieve good seal.
6. Remove sealant surplus sealant.

# AXA HOX SEMI RECESSED BASIN

## INSTALLATION INSTRUCTIONS

### Note

Exposed rear surface of basin is fully glazed.

1. Cut out bench top as per 'cut out' detailed below and template supplied.
2. Fit selected tapware to basin. Fit the required waste to basin ensuring it is sealed with silicone at top and bottom.
3. Apply waterproof sealant (not supplied) to the rim of the basin and to the bench top.
4. Fit basin onto the bench top and press firmly all around to achieve good seal.
5. Remove surplus sealant.

