

Sanifos®



CHAMBERS



INGROUND PUMP

Saniflo  SFA GROUP

Shaking up water



INTRODUCTION

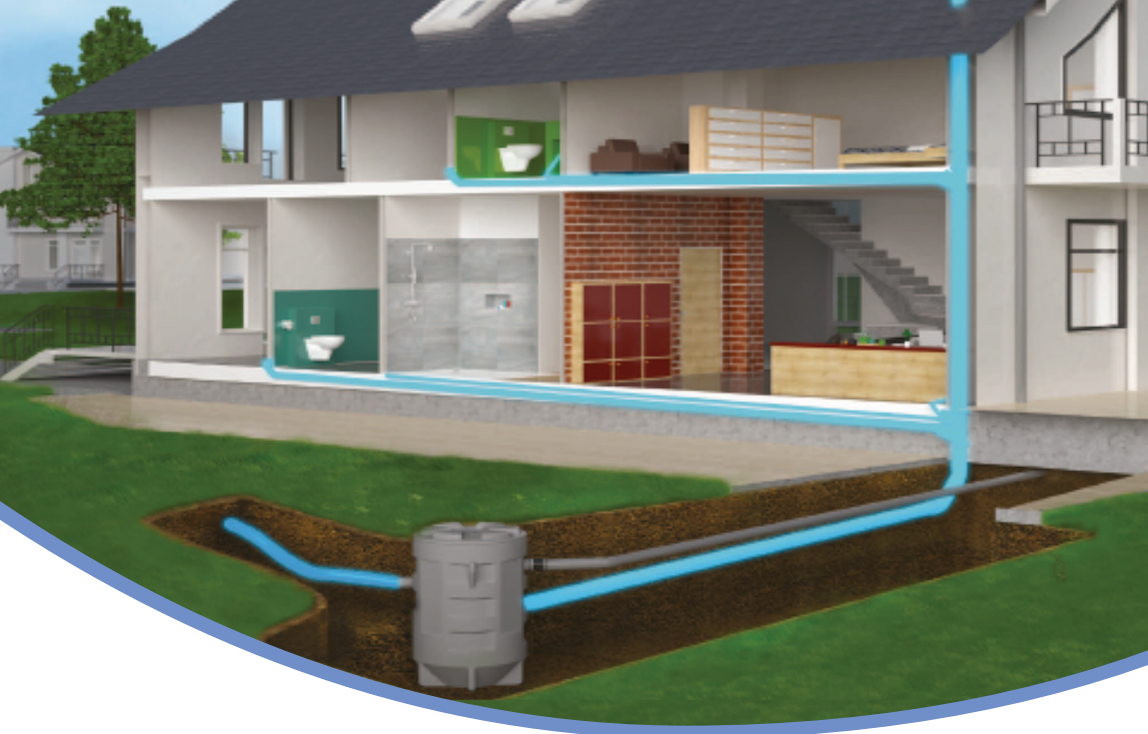
SFA, the makers of Saniflo, are introducing a range of Inground Pump Chambers into Australia called Sanifos.

Sanifos comprises a range of fully packaged Inground Pump Chambers, which carry the same quality and aftersales service standards Saniflo SFA is so well known for.

About Sanifos

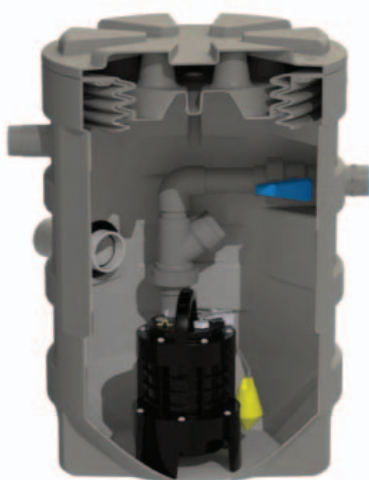
Like Saniflo, Sanifos is a brand created and owned by the French SFA group. For over 60 years the SFA Group's goal has been to allow one to easily install toilets, showers, sinks, kitchens, baths and hand basins literally anywhere. From its early beginnings as the inventor of the domestic macerating system, the SFA Group is today amongst the main companies providing pump solutions worldwide.

PRODUCT	PUMP OPTIONS	TWIN PUMP OPTION	SELECTION	GREY WATER	BLACK WATER	H MAX (M)	Q MAX L/MIN
SANIFOS 280	Sanipump Cutter			✓	✓	11	216 L/min
SANIFOS 610 GR	Sanipump Cutter			✓	✓	11	216 L/min
	Sanipump SLD 700					11	583 L/min
SANIFOS 1000+*	Sanipump Cutter	✓		✓	✓	11	216 L/min
	Sanipump ZFS 71					20	266 L/min



Sanifos® 280

The Sanifos® 280 is a packaged pumping station designed for smaller single dwelling use such as granny flats and is an efficient solution where gravity reliant sewerage systems are not possible due to limited site access and site constraints such as property sloping away from the sewer infrastructure.



WHY CHOOSE THIS PRODUCT?

Ideal for small single dwelling residential or small commercial applications

Tough reliable cutter pump suitable for heavy usage

Compact space saving tank design

Engineered to Australian Standards AS1546

Wired high level alarm

Choice of optional inlet connection points

Working temperature of 70°C max for short periods

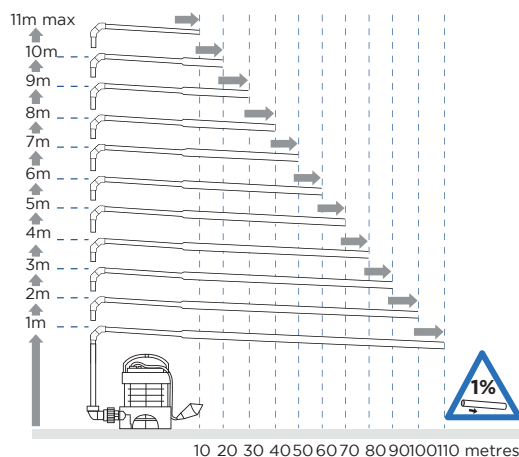
IP68 rated

Complete package ready to install. Includes internal pipework, non return and ball valve supplied

Energy saving and reduced motor wear thanks to large working volume

VERTICAL/HORIZONTAL PERFORMANCE

Increase size of horizontal run by one pipe size after 5m.
All horizontal pipework requires a minimum of 1:100 fall.



APPLICATIONS



TOILET



HAND BASIN



BATH



SHOWER



WASHING MACHINE



DISH WASHER



KITCHEN SINK

Product Reference:
SA305

Sanipump Cutter



Robust blade suitable for heavy usage



Shaking up water

Made in France to the highest standards, needs to be installed by a licensed plumber



APPLICATIONS



TOILET



HAND BASIN



BATH



SHOWER



WASHING MACHINE



DISH WASHER

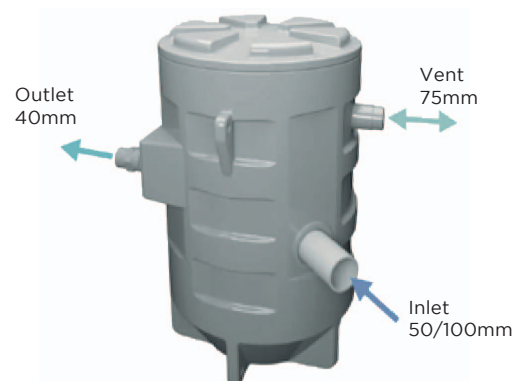
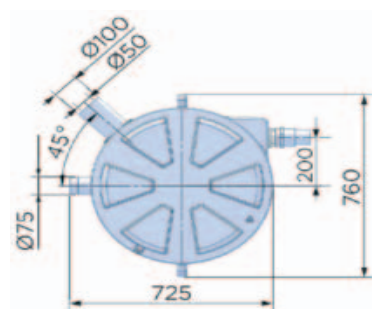
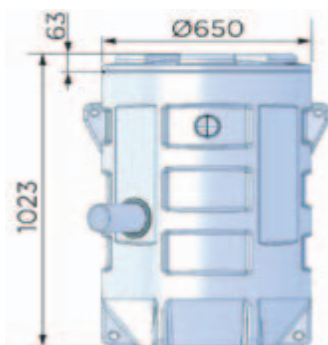
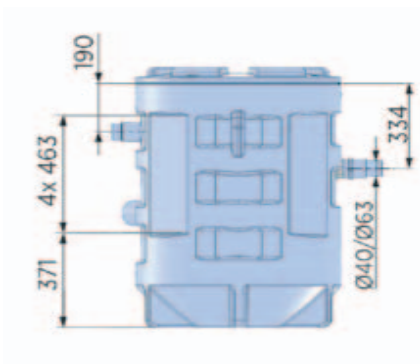


KITCHEN SINK

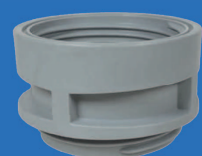
Product Reference:
SA305

TECHNICAL CHARACTERISTICS

Discharge Pipework	40 mm
Motor Power Sanipump Cutter	1500 Watts
Maximum Current Draw	6 A
Voltages	220-240 V/50 Hz
Tank Volume	280 L
Working Waste Water Temp	35°C/Max 70°C (intermittent)
Overall Measurements	1023 x 760 mm
Inlet Pipework	40/50/100 mm
IP Rating	IP68
Max Discharge Sanipump Cutter	216 L/min
Weight	38 kg



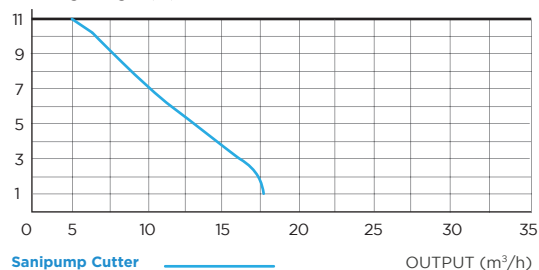
Comes with wired high level alarm



Optional tank extension ring

FLOW RATE PERFORMANCE CHART

Discharge height (m)



SFA GROUP

Shaking up water

Made in France to the highest standards, needs to be installed by a licensed plumber



APPLICATIONS



TOILET



HAND BASIN



BATH



SHOWER



WASHING MACHINE



DISH WASHER



KITCHEN SINK

SANIFOS 610 GR

Sanifos® 610 GR

The Sanifos® 610 GR is packaged pumping station for single dwelling use is an efficient solution where gravity reliant sewerage systems are not possible due to limited site access and site constraints such as property sloping away from the sewer infrastructure.

Product Reference:
Sanipump Cutter - SA303



WHY CHOOSE THIS PRODUCT?

Ideal for single dwelling residential or small commercial applications

The choice of Tough reliable macerator or dedicated storm water pumps

Compact space saving tank design

Engineered to Australian Standards AS1546

Wired high level alarm

Choice of optional inlet connection points

Working temperature of 70°C max for short periods

IP68 rated

Complete package ready to install. Includes internal pipework, non return and ball valve supplied.

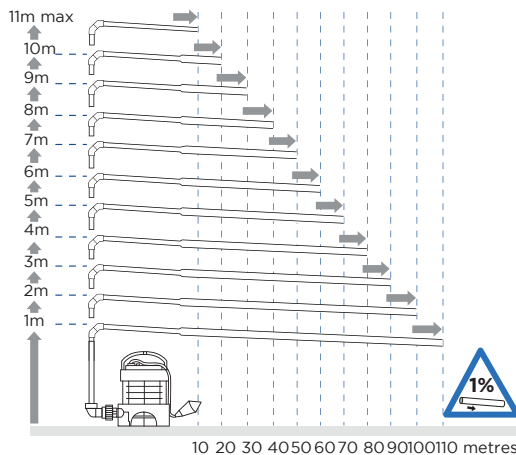
Energy saving and reduced motor wear thanks to large working volume.



Robust blade suitable for standard usage

VERTICAL/HORIZONTAL PERFORMANCE

Increase size of horizontal run by one pipe size after 5m. All horizontal pipework requires a minimum of 1:100 fall.



Shaking up water

Made in France to the highest standards, needs to be installed by a licensed plumber



APPLICATIONS



TOILET



HAND BASIN



BATH



SHOWER



WASHING MACHINE



DISH WASHER



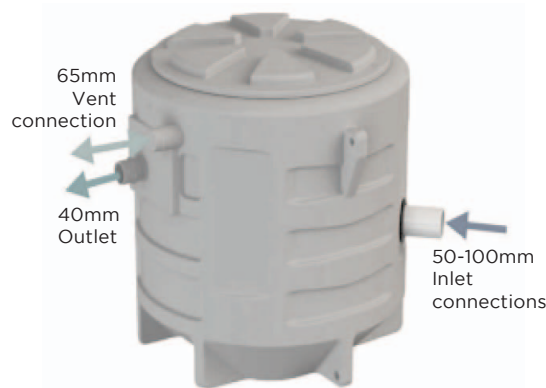
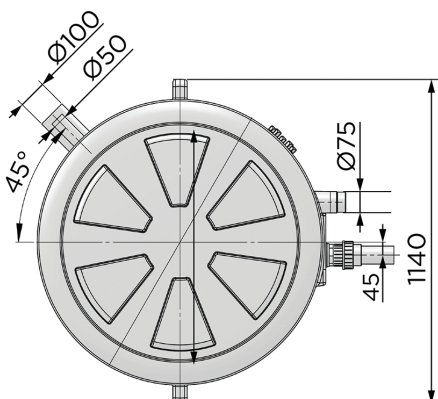
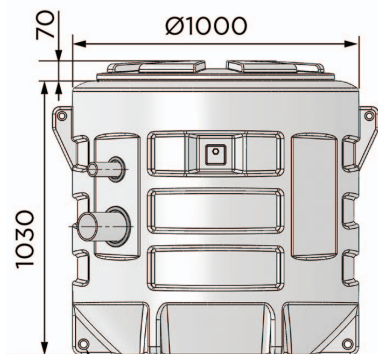
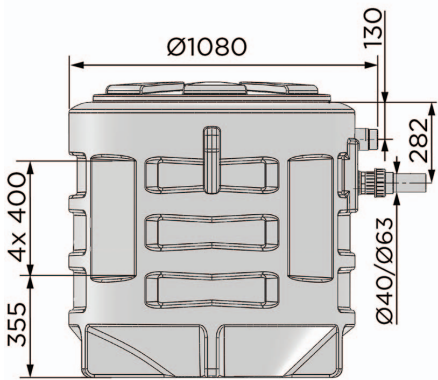
KITCHEN SINK

SANIFOS 610 GR

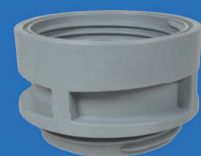
Product Reference:
Sanipump Cutter - SA303

TECHNICAL CHARACTERISTICS

Discharge Pipework	40 mm
Motor Power Sanipump Cutter	1500 Watts
Voltages	220-240 V/50 Hz
Tank Volume	610 L
Working Waste Water Temp	35°C/Max 70°C (intermittent)
Overall Measurements	1140 x 1000 mm
Inlet Pipework	40/50/100 mm
IP Rating	IP68
Max Discharge Sanipump Cutter	216 L/min

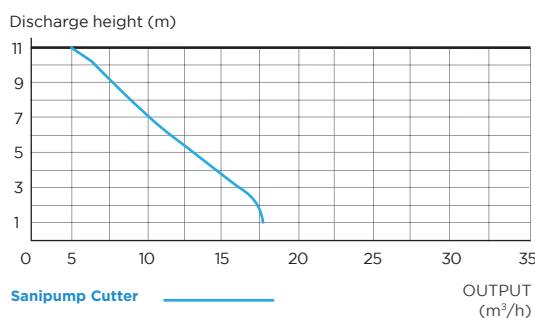


Comes with wired high level alarm

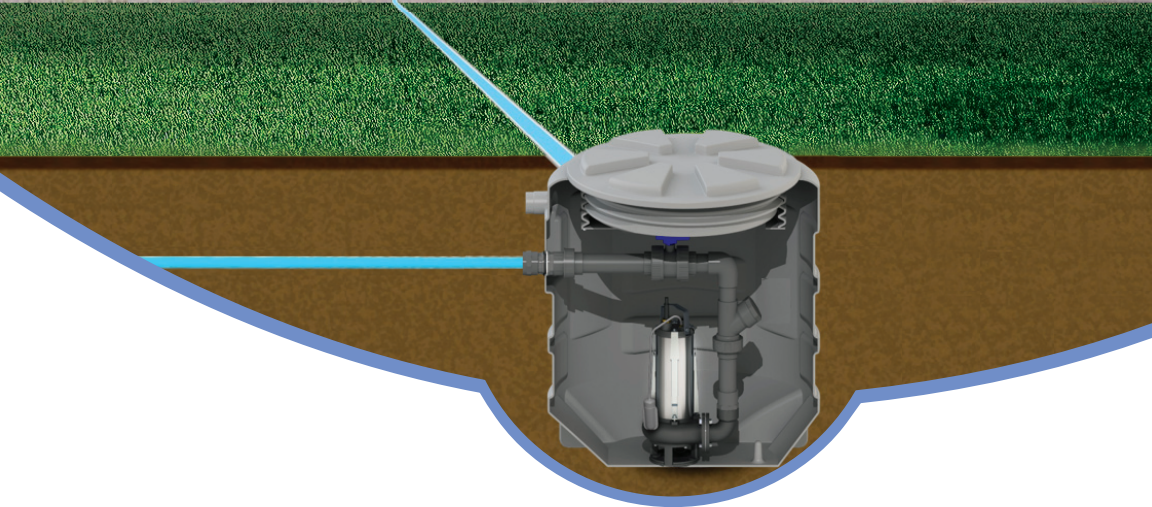


Optional tank extension ring

FLOW RATE PERFORMANCE CHART



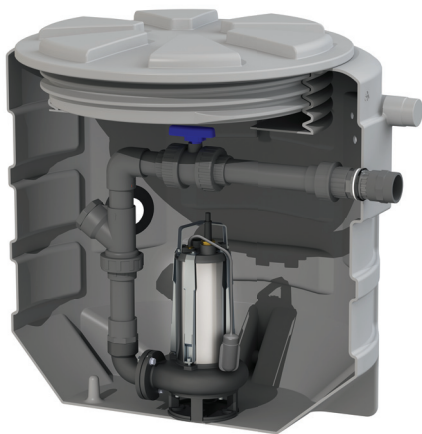
Made in France to the highest standards, needs to be installed by a licensed plumber



Product Reference:
SA302

Sanifos® 610 SLD

The Sanifos® 610 SLD 700 is a packaged pumping station for single dwelling use is an efficient solution where gravity a reliant storm water systems is not possible due to limited site access and site constraints such as property sloping away from the main storm water infrastructure.



SA302

WHY CHOOSE THIS PRODUCT?

Ideal for single dwelling residential or small commercial applications

Tough reliable storm water pump

Compact space saving tank design

Engineered to Australian Standards AS1546

Wired high level alarm

Choice of optional inlet connection points

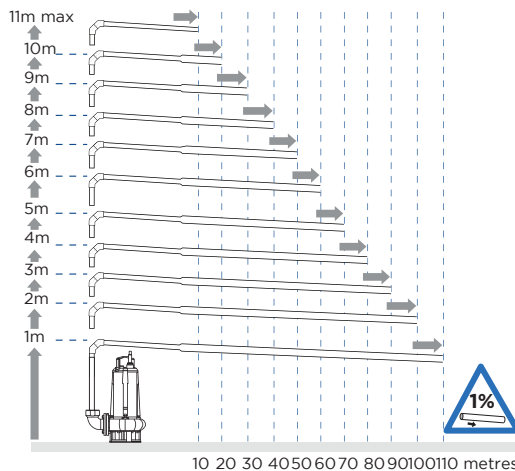
IP68 rated

Complete package ready to install. Includes internal pipework, non return and ball valve supplied.

Energy saving and reduced motor wear thanks to large working volume.

VERTICAL/HORIZONTAL PERFORMANCE

Increase size of horizontal run by one pipe size after 5m. All horizontal pipework requires a minimum of 1:100 fall.



Sanipump
SLD 700



High performance twin channel impeller



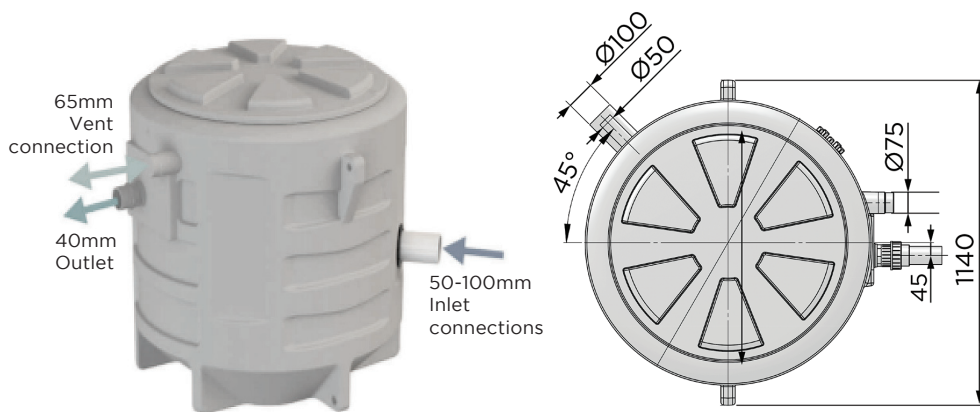


Sanifos® 610 SLD

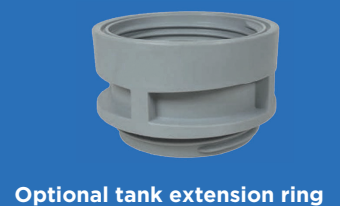
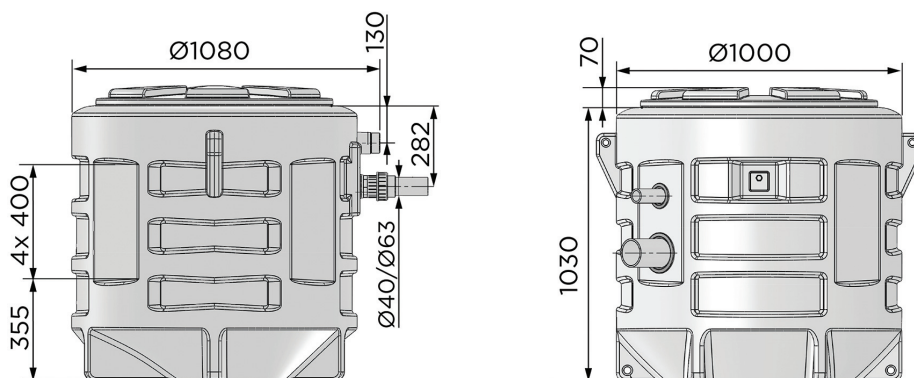
TECHNICAL CHARACTERISTICS

Discharge Pipework	40 mm
Motor Power	1100 Watts
Voltages	220-240 V/50 Hz
Tank Volume	610 L
Overall Measurements	1140 x 1000 mm
Inlet Pipework	40/50/100 mm
IP Rating	IP68
Max Discharge	583 L/min

Product Reference:
SA302

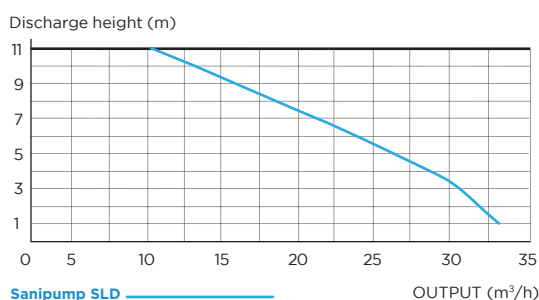


Comes with wired high level alarm



Optional tank extension ring

FLOW RATE PERFORMANCE CHART



Made in France to the highest standards, needs to be installed by a licensed plumber



APPLICATIONS



TOILET



HAND BASIN



BATH



SHOWER



WASHING MACHINE



DISH WASHER



KITCHEN SINK

Product Reference: SA309

Sanifos® 1000 GR Twin

The Sanifos 1000 GR Twin is a dual motor pump station designed for large-medium residential use and is an effective solution where gravity reliant sewerage systems are not possible due to limited site access and constraints such as the property sloping away from the sewer.



WHY CHOOSE THIS PRODUCT?

Ideal for larger single dwelling residential or commercial applications

Tough robust cutter blade assembly

Compact space saving tank design

Engineered to Australian Standards AS1546

Intelligent controller with high level alarm

Choice of optional inlet connection points

IP68 rated

Complete package ready to install. Includes dual pumps internal pipework, non return and ball valve supplied

Energy saving and reduced motor wear thanks to large working volume and shared duty cycle



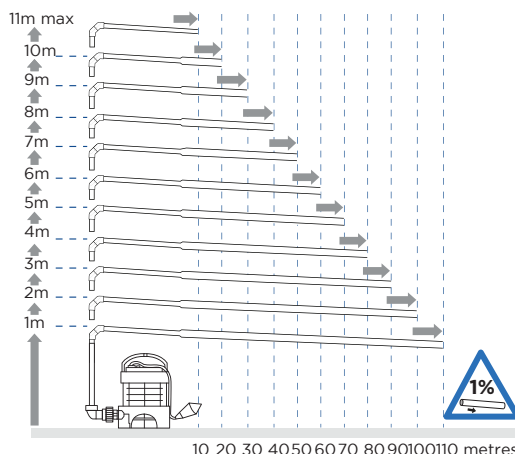
Sanipump Cutter (Guide rail mounted)



Robust blade suitable for heavy usage

VERTICAL/HORIZONTAL PERFORMANCE

Increase size of horizontal run by one pipe size after 5m. All horizontal pipework requires a minimum of 1:100 fall.





APPLICATIONS



TOILET



HAND
BASIN



BATH



SHOWER



WASHING
MACHINE



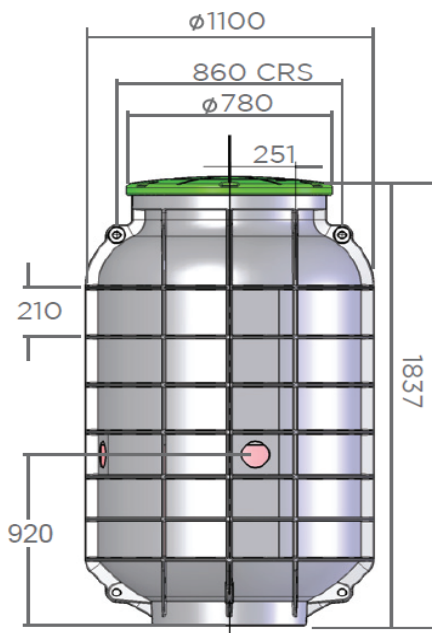
DISH
WASHER



KITCHEN
SINK

SANIFOS 1000 GR TWIN

Product Reference:
SA309

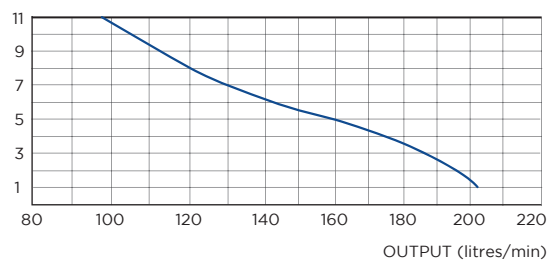


TECHNICAL CHARACTERISTICS

Discharge Pipework	40 mm
Motor Power Sanipump Cutter	2 X 1500 Watts
Weight	130 kg
Voltages	220-240 V/50 Hz
Tank Volume	1000 L
Overall Measurements	1837 x 1100 mm
Inlet Pipework	50/100 mm
IP Rating	IP68
Max Discharge Sanipump Cutter	216 L/min
Maximum Recommended Head	11 metres

FLOW RATE PERFORMANCE CHART

Discharge height (m)



Smart Controller



Remote Alarm Panel



Shaking up water

Made in France and assembled in Australia to the highest standards. Must be installed by a licensed plumber.



APPLICATIONS



TOILET



HAND BASIN



BATH



SHOWER



WASHING MACHINE



DISH WASHER



KITCHEN SINK

Sanifos® 1000 ZFS Single

The Sanifos 1000 ZFS Single is a high lift heavy duty single motor pump station designed for large-medium residential or commercial where higher lift is required. The pump station is an effective solution where gravity reliant sewerage systems are not possible due to limited site access and constraints such as the property sloping away from the sewer.

Product Reference: SA301



WHY CHOOSE THIS PRODUCT?

Ideal for larger single dwelling residential or commercial applications

Heavy duty pump for higher lift requirements

Compact space saving tank design

Engineered to Australian Standards AS1546

Intelligent controller with high level alarm

Choice of optional inlet connection points

IP68 rated

Complete package ready to install. Includes pump, internal pipework, non return valve & ball valve supplied

Energy saving and reduced motor wear thanks to large working volume



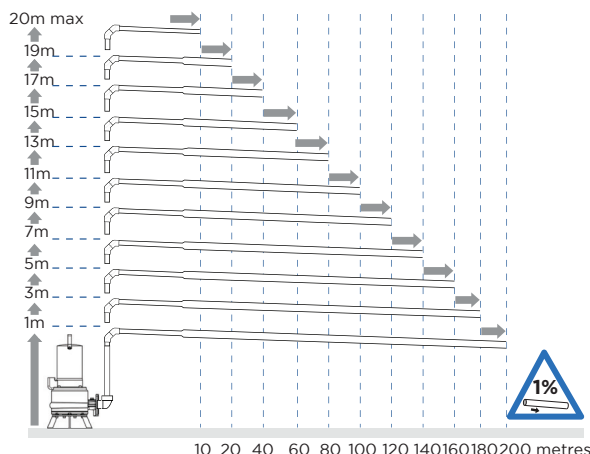
Sanipump ZFS 71

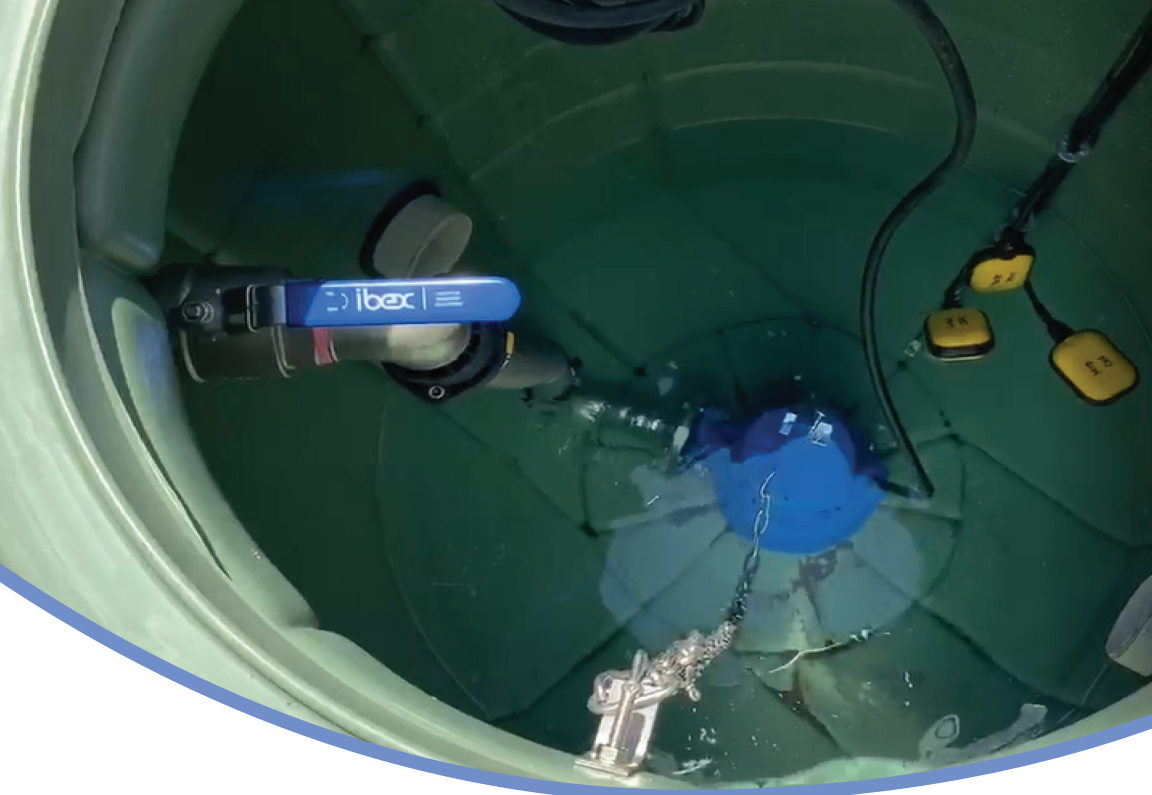


Heavy duty adjustable cutter for intense usage

VERTICAL/HORIZONTAL PERFORMANCE

Increase size of horizontal run by one pipe size after 5m. All horizontal pipework requires a minimum of 1:100 fall.





APPLICATIONS



TOILET



HAND
BASIN



BATH



SHOWER



WASHING
MACHINE



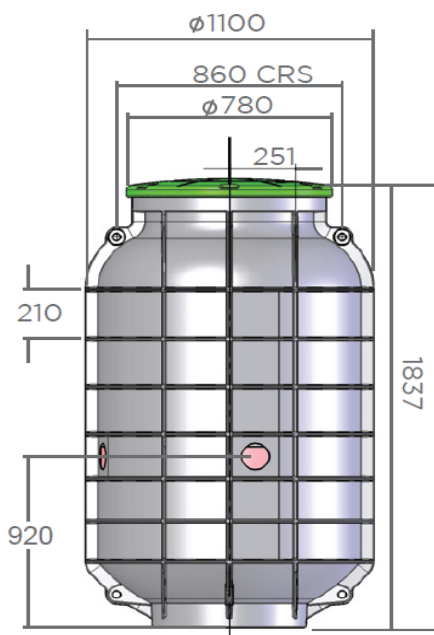
DISH
WASHER



KITCHEN
SINK

SANIFOS 1000 ZFS SINGLE

Product Reference:
SA301

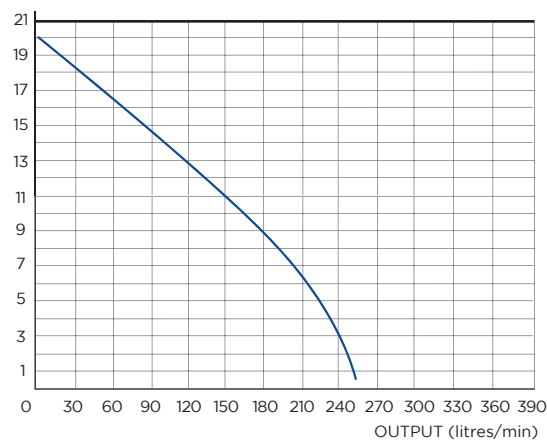


TECHNICAL CHARACTERISTICS

Discharge Pipework	50 mm
Motor Power	2200 Watts
Weight	130 kg
Voltages	220-240 V/50 Hz
Tank Volume	1000 L
Overall Measurements	1837 x 1100 mm
Inlet Pipework	100 mm
IP Rating	IP68
Max Discharge Sanipump ZFS 71.1	256 L/min
Maximum Recommended Head	20 metres

FLOW RATE PERFORMANCE CHART

Discharge height (m)



Full function pump
controller with manual
override and high
level audible alarm



Shaking up water

Made in Germany and assembled in
Australia to the highest standards.
Must be installed by a licensed plumber.



APPLICATIONS



TOILET



HAND BASIN



BATH



SHOWER



WASHING MACHINE



DISH WASHER



KITCHEN SINK

Sanifos® 1000 ZFS Twin

The Sanifos 1000 ZFS Twin is a high lift heavy duty dual motor pump station designed for large-medium residential or commercial where higher lift is required. The pump station is an effective solution where gravity reliant sewerage systems are not possible due to limited site access and constraints such as the property sloping away from the sewer.

Product Reference: SA310



WHY CHOOSE THIS PRODUCT?

Ideal for larger single dwelling residential or commercial applications

Heavy duty dual pump set for higher lift requirements

Compact space saving tank design

Engineered to Australian Standards AS1546

Pump controller or high level alarm options

Shared pump duty for prolonged system life

Heavy duty cutter assembly for intensive use

IP68 rated

Complete package ready to install. Includes dual pumps internal pipework, non return and ball valve supplied

Energy saving and reduced motor wear thanks to large working volume and shared duty cycle



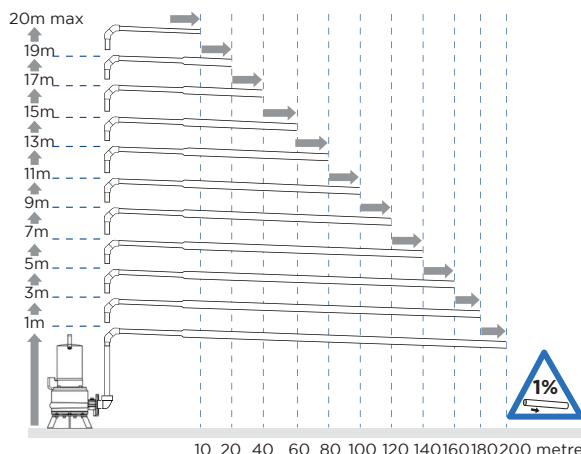
Sanipump ZFS 71



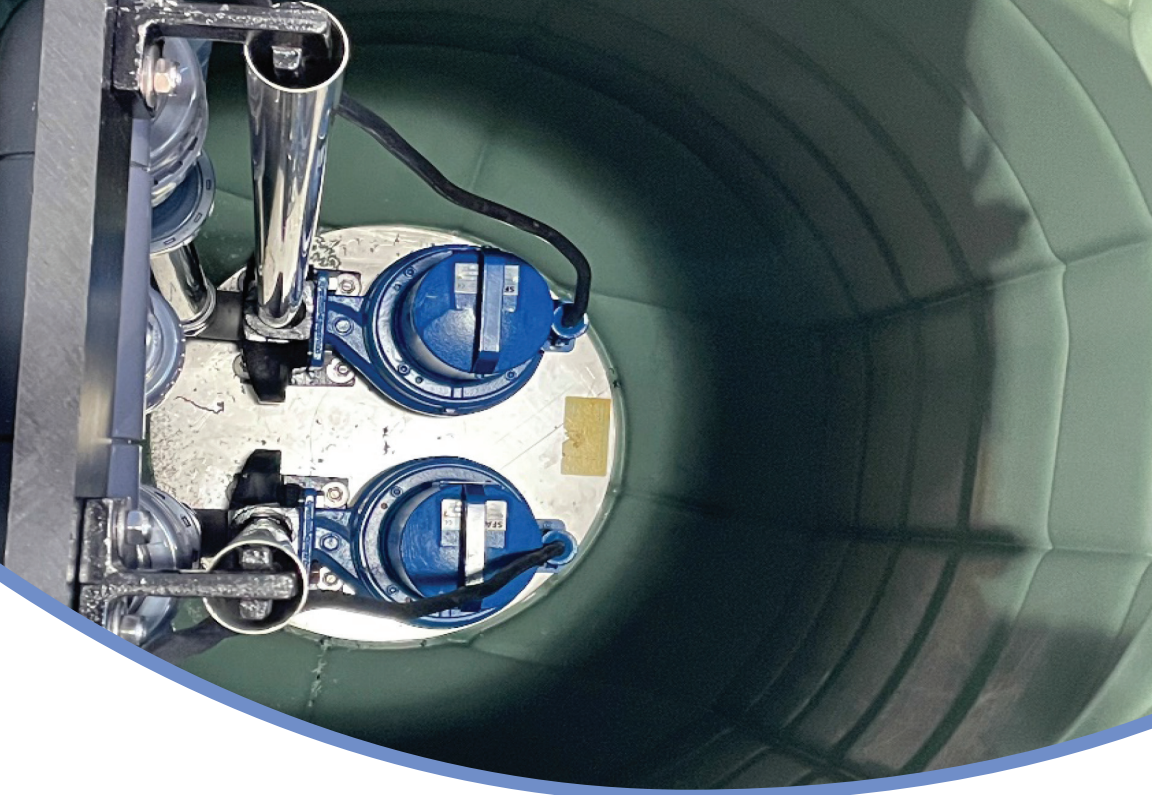
Heavy duty adjustable cutter for intense usage

VERTICAL/HORIZONTAL PERFORMANCE

Increase size of horizontal run by one pipe size after 5m. All horizontal pipework requires a minimum of 1:100 fall.



*AU ONLY



APPLICATIONS



TOILET



HAND
BASIN



BATH



SHOWER



WASHING
MACHINE



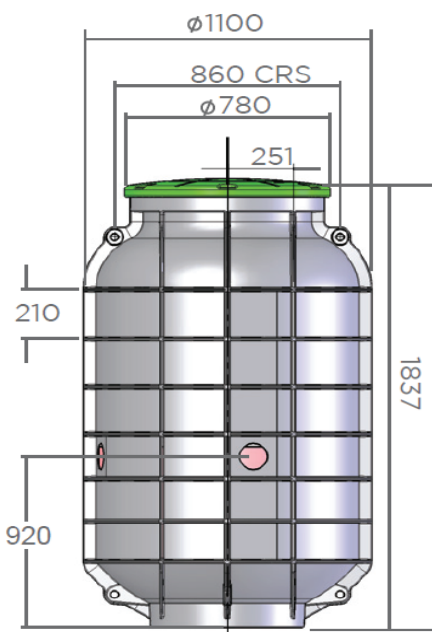
DISH
WASHER



KITCHEN
SINK

SANIFOS 1000 ZFS TWIN

Product Reference:
SA310

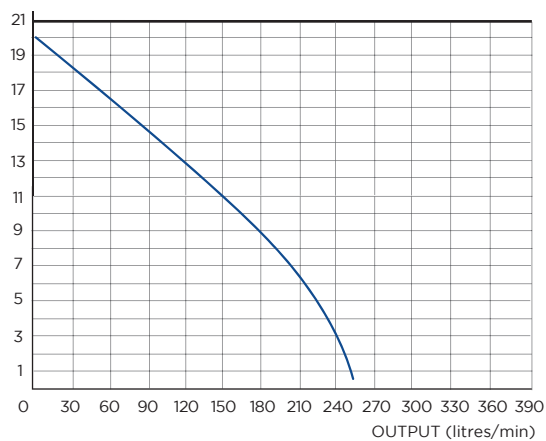


TECHNICAL CHARACTERISTICS

Discharge Pipework	50 mm
Motor Power	2 X 2200 Watts
Weight	169 kg
Voltages	220-240 V/50 Hz
Tank Volume	1000 L
Overall Measurements	1837 x 1100 mm
Inlet Pipework	100 mm
IP Rating	IP68
Max Discharge Sanipump ZFS 71.1	256 L/min
Maximum Recommended Head	20 metres

FLOW RATE PERFORMANCE CHART

Discharge height (m)



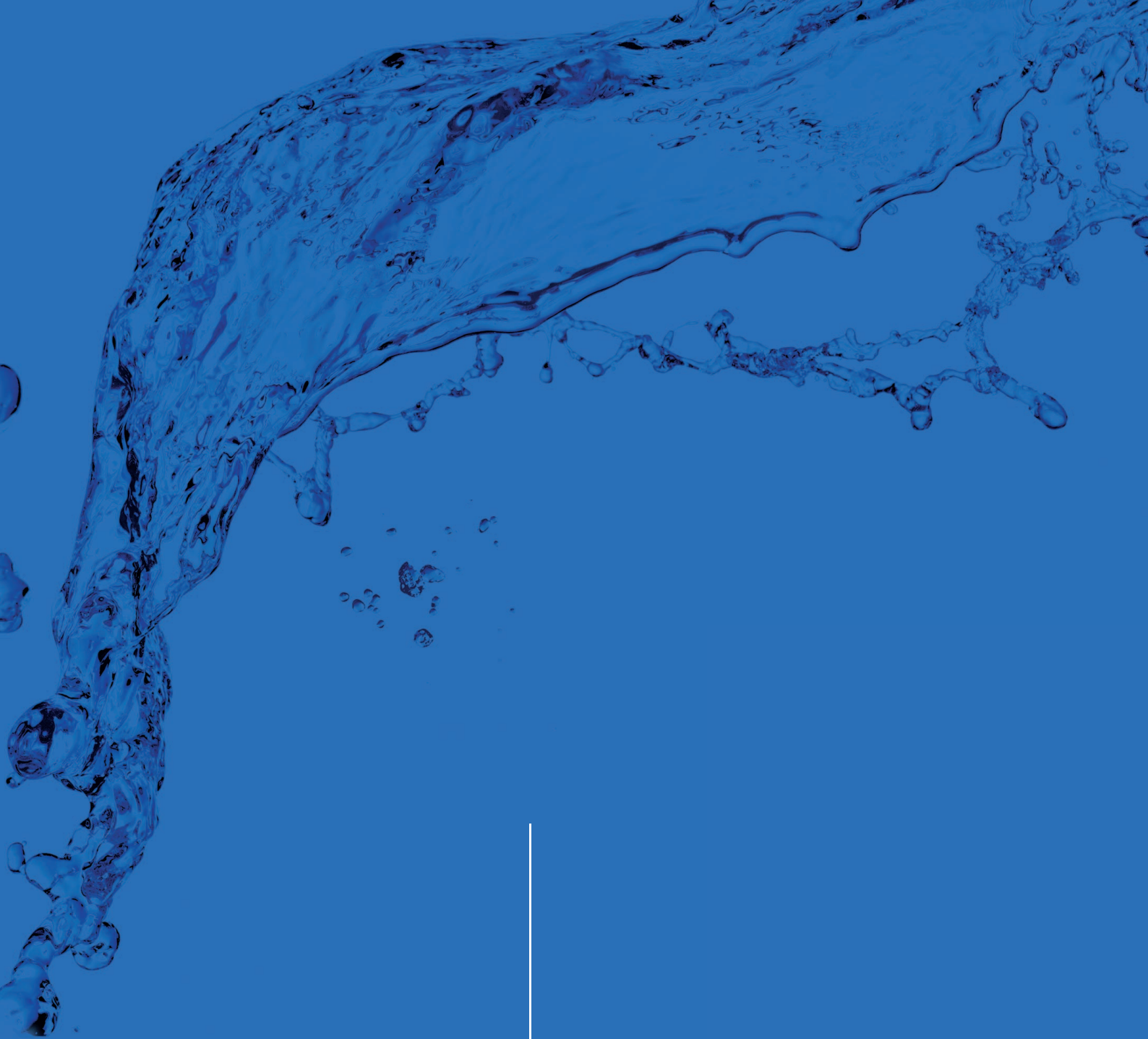
Full function dual pump
controller with manual
override and high level
audible alarm

*AU ONLY



Shaking up water

Made in Germany and assembled in
Australia to the highest standards.
Must be installed by a licensed plumber.



Saniflo  **SFA** GROUP

Shaking up water

SANIFLO'S DESIGN SERVICE

We know our products well and we also have extensive experience in where they are used.

Contact us on **technical@saniflo.com.au** and we will help with your projects and plans.

**FOR PROJECT
PUMP SELECTION
ADVICE**



SANIFLO AUSTRALASIA

Tel: 1300 554 779

General enquiries: info@saniflo.com.au

Technical & project support: technical@saniflo.com.au

WWW.SANIFLO.COM.AU