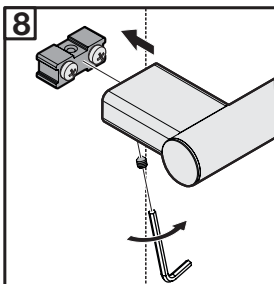
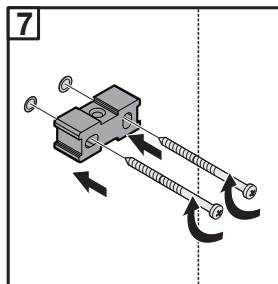
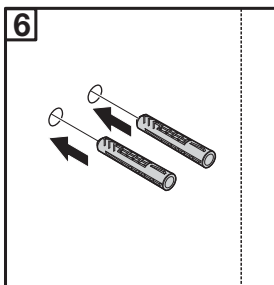
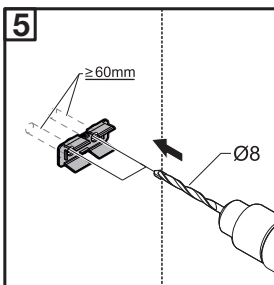
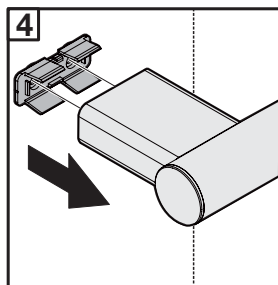
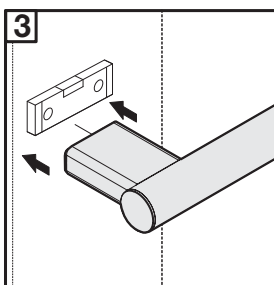
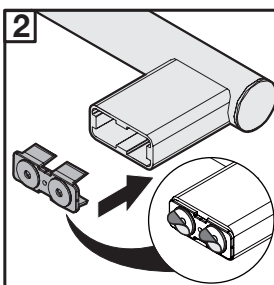
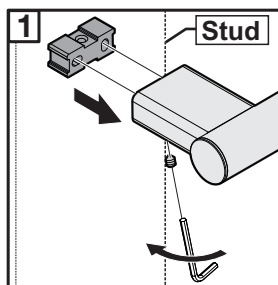
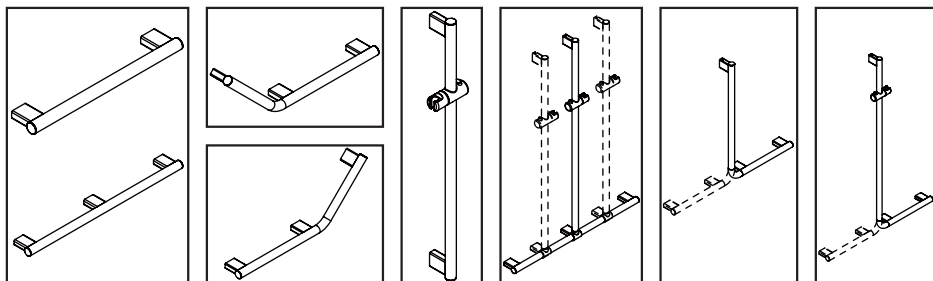
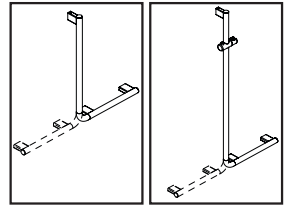
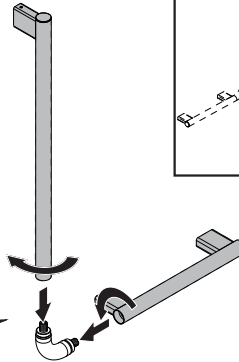
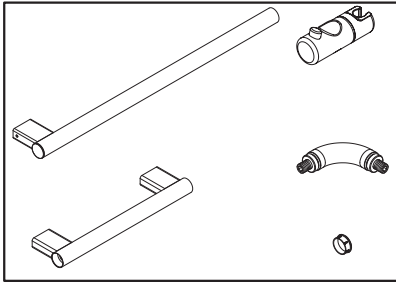


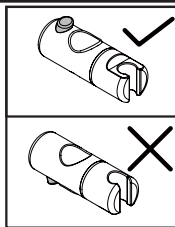
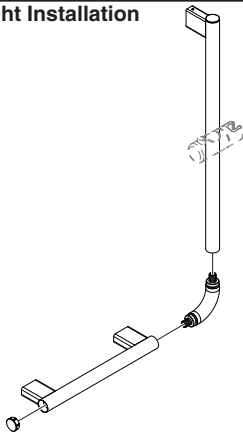
Drift Assisted Living Accessories



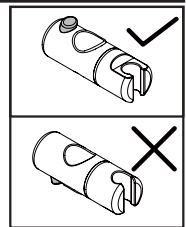
Reversible for left and right installation



Right Installation



Left Installation



NOTE

Weight load rating is 150kg

NOTE

Wall materials vary. The accessory fixing kit supplied is suited for solid wall fixing.
For timber framed walls, please ensure the accessory is fixed to a noggin/stud behind the wall.
Where stud/noggin is not available, please use suitable hollow wall fixing.

Instruction is to be left with the end user for future reference.

