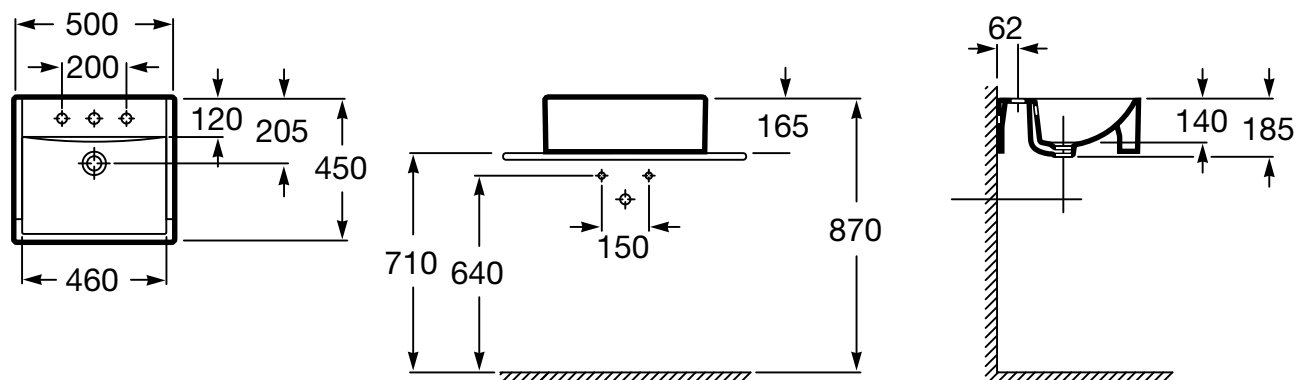


ROCA

DIVERTA SEMI RECESSED BASIN



Dimensions are nominal measurements only.

SPECIFICATION

Fixing Requirements	Fixing clips supplied
Integral Overflow	Yes
Tap Hole Availability	1 or 3 tapholes
Plug & Waste	Suits 32 x 40mm overflow waste
Water Capacity	5.2 litres
Colour Availability	White
Template	Supplied



To see the complete ROCA range go to www.reece.com.au/bathrooms

FEATURES

Recommended Use	Domestic, hotel or commercial
Weight	16.04kg

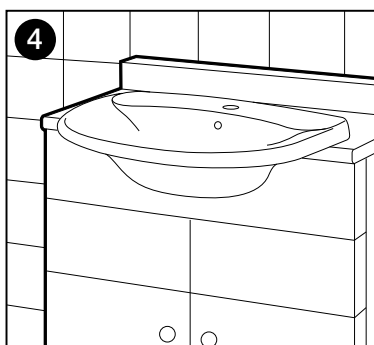
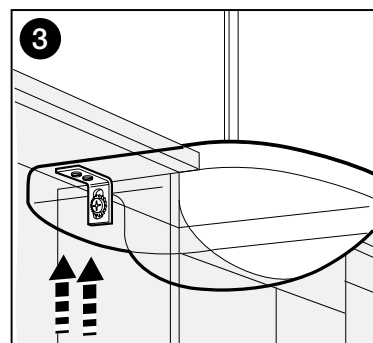
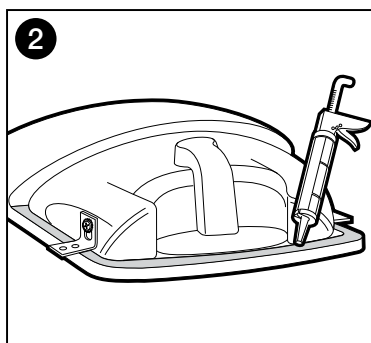
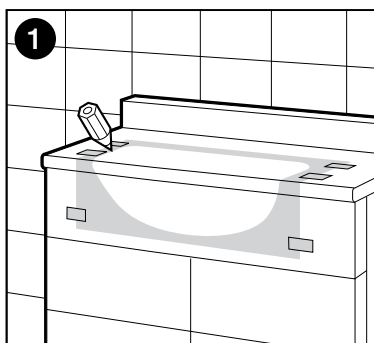
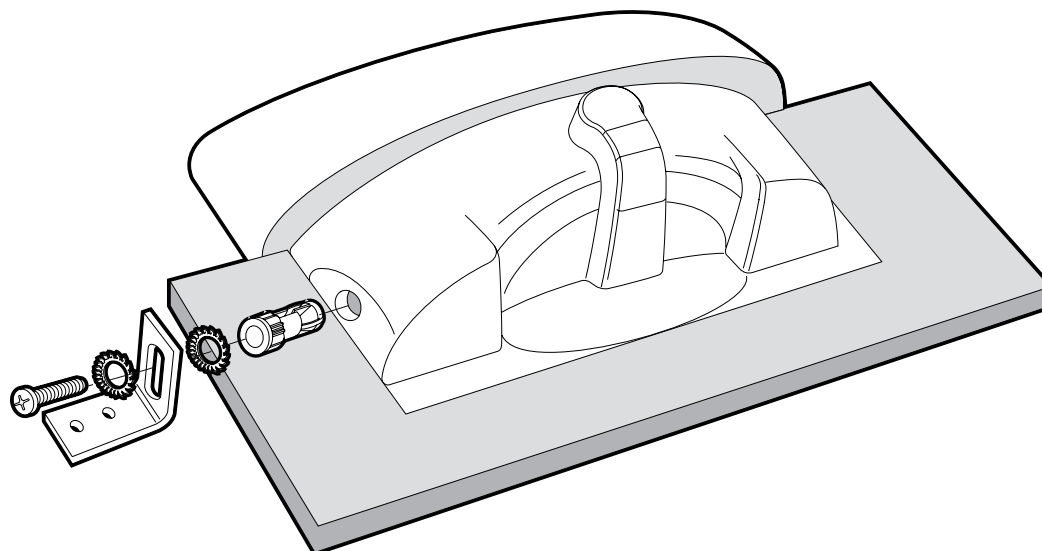
CLEANING RECOMMENDATIONS

Soapy water or approved bathroom cleaners. This bathroom product should not be cleaned with abrasive materials. Damage caused by any improper treatment is not covered by the product warranty. Refer to Warranty Conditions.

ROCA

DIVERTA SEMI RECESSED BASIN

INSTALLATION



Plumbers, please ensure a copy of the installation instructions is left with the end user for future reference