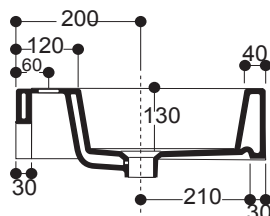
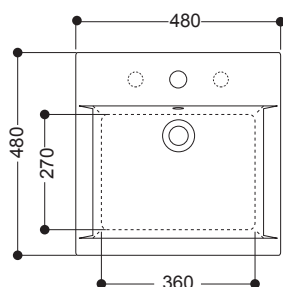
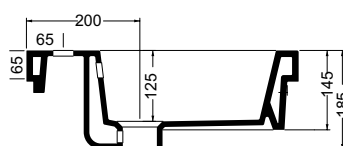
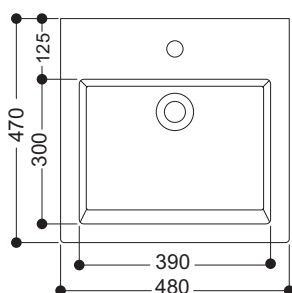


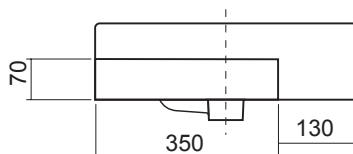
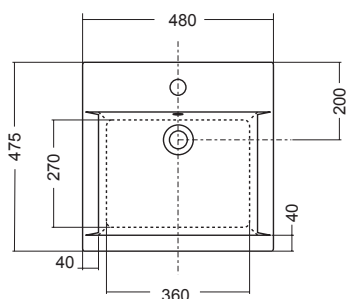
AXA HOX BASINS



Axa Hox Counter/Wall Basin



Axa Hox Semi Inset Basin



Axa Hox Semi Recessed Basin

To see the complete Axa range go to www.reece.com.au/bathrooms

Disclaimer: Products in this specification manual must by regulation be installed by licensed and registered trade people. The manufacturer/distributor reserves the right to vary specifications or delete models from their range without prior notification. Dimensions and set-outs listed are correct at time of publication however the manufacturer/distributor takes no responsibility for printing errors.

Tech Page Version 2

AXA

HOX BASINS

SPECIFICATIONS

Recommended use	Domestic, hotel and commercial
Material	Vitreous china
Colour	White
Integral overflow	Yes (Chrome overflow ring)
Taphole availability	Counter/Wall Basin - 0, 1 and 3 Taphole Semi Inset Basin - 1 and 3 Tapholes Semi Recessed Basin - 1 and 3 Taphole
Capacity	Counter/Wall Basin - 9 Litres Semi Inset Basin - 7.4 Litres Semi Recessed Basin - 9 Litres
Weight	Counter/Wall Basin - 15 kg Semi Inset Basin - 15.5 kg Semi Recessed Basin - 15 kg
Plug and waste	32x40 Overflow Waste (not supplied)
Fixing	Sealed to countertop with waterproof sealant
Cut out template	Supplied with basin

CLEANING RECOMMENDATIONS

We recommend the use of soapy water or approved cleaners.

This product should not be cleaned with abrasive materials.

Damage caused by any improper treatment is not covered by the product warranty - refer to Warranty Conditions on the last page.

AXA

HOX COUNTER/WALL BASIN

INSTALLATION INSTRUCTIONS

Counter

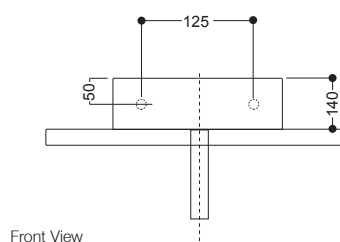
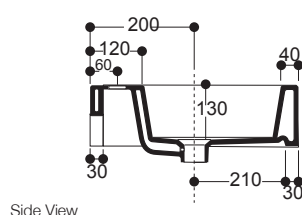
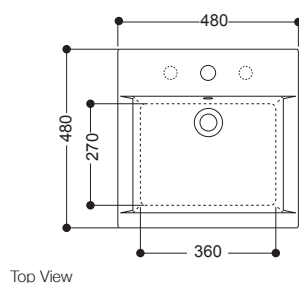
Note:

1. Rear of basin is unglazed. Any counter top installation is recommended against the wall.
2. Cut out bench top as per template supplied (d).
3. Fit selected tapware and waste supplied to basin. Ensure waste is siliconed around rim.
4. Apply waterproof sealant to rim of basin.
5. Locate basin complete with fittings onto bench top and press firmly all around.
6. Remove excess sealant.
7. External edges can be joint sealed using flexible sealant ensuring to wipe off any excess.

Wall

Note:

1. If fixing to timber framed walls or partitioning the wall should be reinforced with noggin to receive fixing bolts.
2. Drill holes into wall at desired height and fixing centres and install fixing bolts supplied (fig 1 and 3).
3. Fit selected tapware to basin. Fit the supplied overflow waste to basin ensuring it is sealed with silicone on top.
4. Carefully align basin complete with fittings onto protruding bolts.
5. Insert nylon bushes and locking nuts supplied and partially tighten locknuts to hold basin into position. Make minor adjustments at this stage and ensure basin is level and then fully tighten lock nuts. Do not overtighten!
6. If desired all visible external edges can be joint sealed using flexible sealant ensuring to wipe off any excess.



Plumbers, please ensure a copy of the installation instructions is left with the end user for future reference

AXA

HOX SEMI INSET BASIN

INSTALLATION INSTRUCTIONS

Note

Please consider installed position of basin, to ensure minimal water splash from tapware selected.
Back edge of basin is fully glazed.

1. Position supplied cut out template onto the bench and mark off the counter installation.
2. Cut hole in bench to template size.
3. Fit selected waste to basin. Ensure waste is sealed top and bottom.
4. Apply waterproof sealant (not supplied) to the rim of the basin.
5. Fit basin onto the bench top and press firmly all around to achieve good seal.
6. Remove sealant surplus sealant.

AXA **reece**



REECE PRODUCT QUALITY GUARANTEE

You have purchased a quality product from Reece Pty Ltd ABN 84 004 097 090 ("Reece"). This product is covered by a 15 year replacement product warranty and a 12 month warranty over spare parts and labour.

15 YEAR WARRANTY – DOMESTIC USE

This warranty covers faults in the product construction, material and assembly. Products which are within 15 years from the date of purchase, found upon inspection by an authorised Reece representative, to be defective in construction, material or assembly, will be repaired or exchanged with an equivalent product free of charge. Replaced items become Reece's property.

All replacement products will be available for collection without charge to the customer at the nearest Reece branch to the customer's location, or elsewhere as agreed between the customer and Reece.

Labour and Spare Parts

The labour for the replacement of products and spare parts to which this warranty applies will be supplied by Reece or relevant supplier using licensed plumbers engaged by Reece or relevant supplier within 1 year from the date of purchase.

Spare parts which are within 1 year from the date of purchase found upon inspection by an authorised Reece representative to be defective in construction, material or assembly, will be replaced free of charge.

Warranty Conditions

This warranty will apply only under all of the following conditions:

- The item has been installed by a licensed plumber
- The item has been installed for and subjected to domestic residential use only
- Failure is due to a fault in the manufacture of the product
- Proof of purchase (including the date of purchase) is provided
- The installation of the product is in accordance with the instructions provided

This warranty does not cover products purchased as an ex-display without being fully checked and tested for sale by the manufacturer.

This warranty does not include faults caused by:

- Unsuitable or improper use
- Incorrect installation or installation not in accordance with the instructions provided
- Installation or part installation by the purchaser or any person other than a LICENSED PLUMBER
- Normal wear and tear
- Inadequate or complete lack of maintenance
- Chemical, electrochemical or electrical influences
- Harsh detergents or abrasive cleaners used on product finishes

1 YEAR WARRANTY – COMMERCIAL USE

'Commercial' use is all use other than for normal domestic residential purposes, including use in non-business places as in public buildings, schools, sports centres and in establishments that contain private bathrooms with high frequency of use by many individuals, such as hotels, motels, retirement villages and hospitals.

The Commercial warranty covers this product against manufacturing faults in the construction, material and assembly of both the finished products and any spare parts for a period of 1 year from the date of purchase. Products and spare parts which are found upon inspection by an authorised Reece representative to be defective in construction, material or assembly will be repaired or exchanged free of charge. Replaced items become Reece's property. The labour for the replacement of products and spare parts to which this warranty applies will be supplied by Reece or relevant supplier using licensed plumbers engaged by Reece or relevant supplier. The Warranty Conditions and exclusions which apply to the domestic use warranty also apply to this commercial warranty.

EXCLUSIONS

To the fullest extent permitted by law, Reece excludes all liability for damage or injury to any person, damage to any property, and any indirect consequential or other loss or damage.

CLAIM PROCEDURE

For all warranty queries customers are to contact the branch where the product was purchased. These details can be found on your purchase invoice.

Our goods come with guarantees that cannot be excluded under the Australian Consumer Law. You are entitled to a replacement or refund for a major failure and for compensation for any other reasonably foreseeable loss or damage. You are also entitled to have the goods repaired or replaced if the goods fail to be of acceptable quality and the failure does not amount to a major failure.