

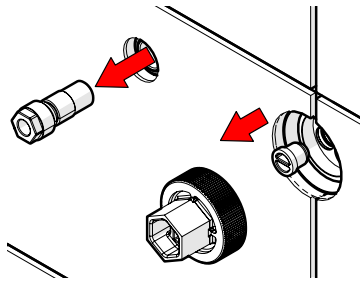


Basin/Bath Mixer Set Fit Off

1

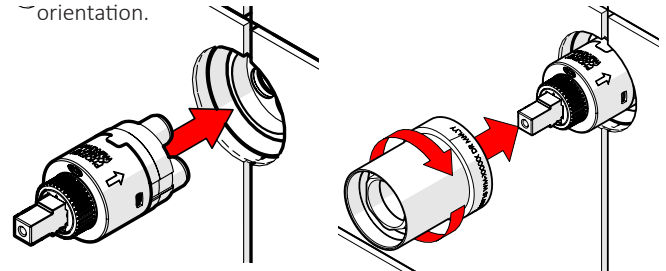
Remove Test Caps with a flat head screwdriver or spanner.

Ensure that no Test Plugs are in Body.

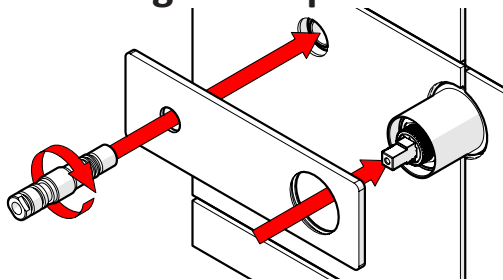
**2**

Add grease or soap to Cartridge Legs. Push Cartridge gently into Body. Ensure correct orientation.

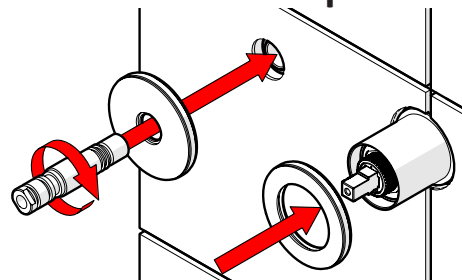
Firmly fasten Cartridge Sleeve to Mixer Body using a 1" Tube spanner.

**3**

Single Backplate

**OR**

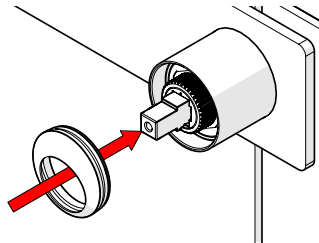
Double Backplate



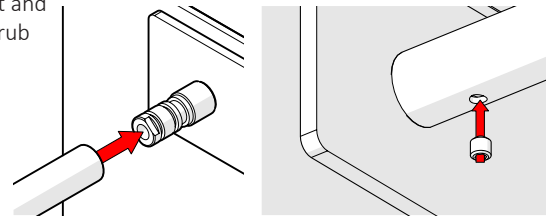
Gently push Dress Plate over Wall Mixer Sleeve. Align outlet hole in wall with outlet hole in Dress Plate. Fasten Spout Adaptor through Dress Plate onto in-wall Mixer Body.

4

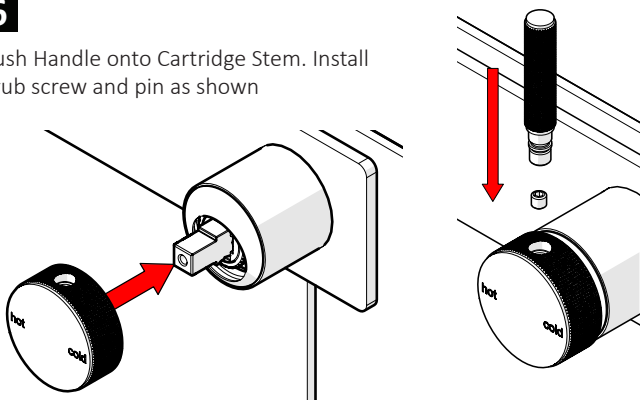
Push Dome into position. Ensure correct orientation

**5**

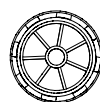
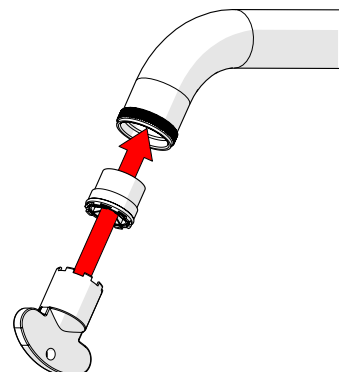
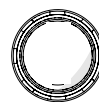
Push on Spout and Secure with grub screw.

**6**

Push Handle onto Cartridge Stem. Install grub screw and pin as shown

**7**

For **BATH** applications. Remove pre-installed aerator. Install provided max flow with key as shown.

Bath**Basin**

Care Details

We recommend the use of soapy water or approved cleaners. This product should not be cleaned with abrasive materials. Damage caused by any improper treatment is not covered by the product warranty. Refer to Warranty Conditions

Installation should comply with Australian standard AS3500.1 or relevant local authority requirements. Showers may not be suitable for use within:

- Gravity-fed water systems
- Some instantaneous hot water systems

Any flow controller incorporated in the outlet to be tightened to prevent removal by hand. As Per AS3718

Plumbers, please ensure a copy of the installation instruction is left with the end user for future reference.

