

mizu

Mizu Drift MK2 Wall Bath Mixer Set 200mm

IMPORTANT NOTE:

Mixer must be installed to the requirements of AS/NZS 3500 by a qualified plumber. Your mixer comes to you already factory assembled and tested. We do not recommend the dismantling of any internal part of the mixer. The mixers are factory tested and sealed so as to give the best performance.

INSTALLATION INSTRUCTIONS:

1. Flush out new pipe work prior to connecting the new mixer.
2. During installation, protect the cartridge barrel (9) surface and spout outlet hole (7-14) by using the plastic cover (27) and plug (26) provided. Pay attention to the mixer and cover plate dimensions when working out installation depth. If required, manipulate the mounting surface to allow for a suitable installation depth.
3. The mixer is ideally suited for timber/metal noggin installation using fastening screws for mounting. If an alternative installation method is intended (e.g. block wall) take appropriate steps to ensure a suitable installation.
4. The outlet in the mixer must always be to the left of the operation handle and aligned level
5. Connect the hot water supply line to the hot 'H' inlet and the cold water supply line to the cold 'C' inlet in the mixer
6. Pressure test all connections as to AS/NZS 3500
7. After the finished wall is completed, remove both the plastic covers and fit the cartridge sleeve (7) and wall cover plate (5)
8. Apply Teflon tape on the spout adapter (20) and use an 8mm Allen key (not supplied) to tighten the adapter into the mixer outlet threads. Ensure appropriate allowance is given for thread engagement and offset for the spout fitment
9. Fit the wall cover plate (5) and use an appropriate sealing compound to seal wall penetrations and the cover plate edges to the wall
10. Fit the spout (16) by placing it over the spout adapter end that is exposed and secure the spout by tightening the 2 grub screws (17) in the spout with the supplied Allen key (21)
11. Fit the handle (11)(14) by fitting the handle slot over the mixer cartridge (8) lever. Use the supplied Allen key (21) to tighten the grub screw (12) in the handle till it is firmly secured. Insert the grub screw hole cover (13) into the handle.

CLEANING RECOMMENDATIONS:

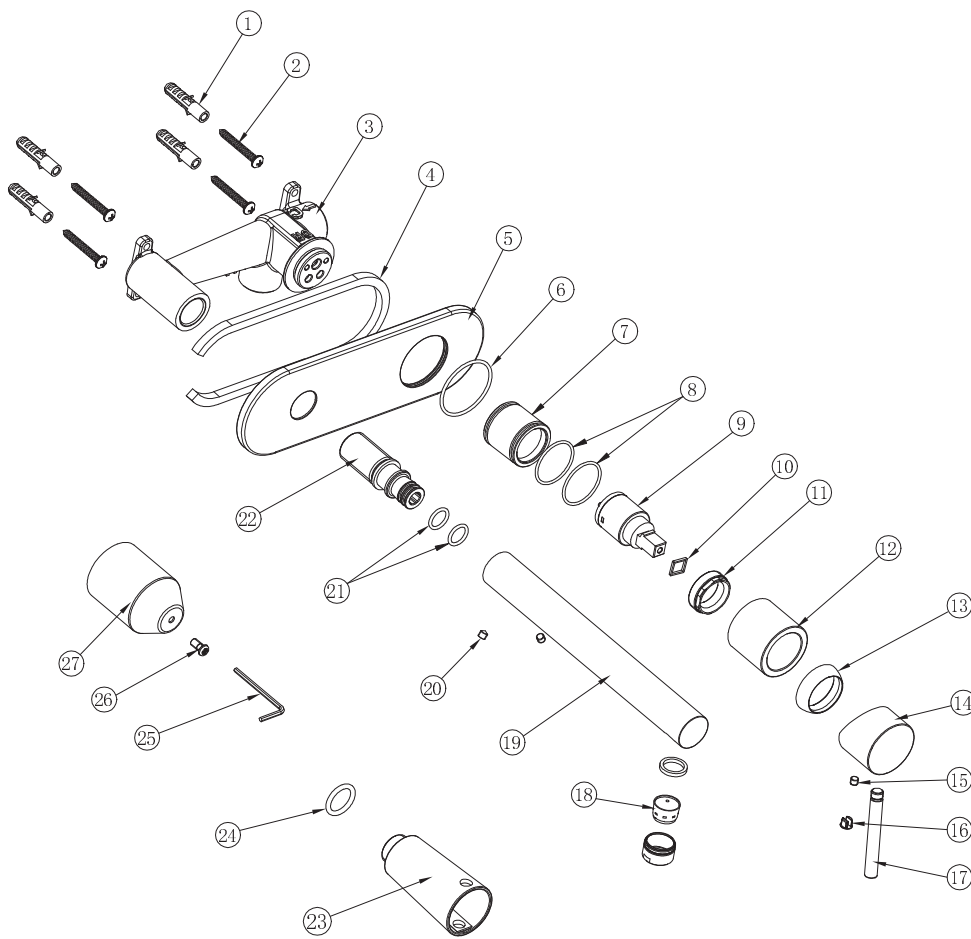
We recommend the use of soapy water or approved cleaners. This product should not be cleaned with abrasive materials. Damage caused by any improper treatment is not covered by the product warranty. Refer to Warranty Conditions

Plumbers, please ensure a copy of the Installation Instructions are left with the end user for future reference



mizu

Mizu Drift MK2 Wall Bath Mixer Set 200mm



No.	Description	Quantity
1	Expansion Screw Ø8*38	4
2	Self Tapping Screw	4
3	Body	1
4	Foam-Rubber Cushion	1
5	Panel	1
6	O-Ring D38*D2	1
7	Cartridge Cover	1
8	O-Ring	2
9	Cartridge	1
10	Washer	1
11	Bonnet	1
12	Cartridge Cover	1
13	Cap	1
14	Handle	1
15	M5*5 Set Screw	1
16	Plug	1
17	Hand Lever	1
18	Aerator	1
19	Spout	1
20	M5*5 Set Screw	2
21	O-Ring	2
22	M5*5 Set Screw	1
23	Washer	1
24	O-Ring	1
25	Spanner	1
26	Screw	1
27	Safety Cover	1