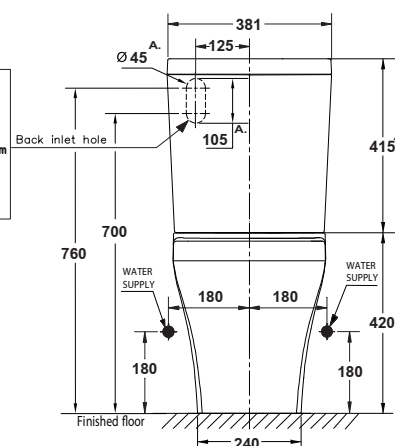
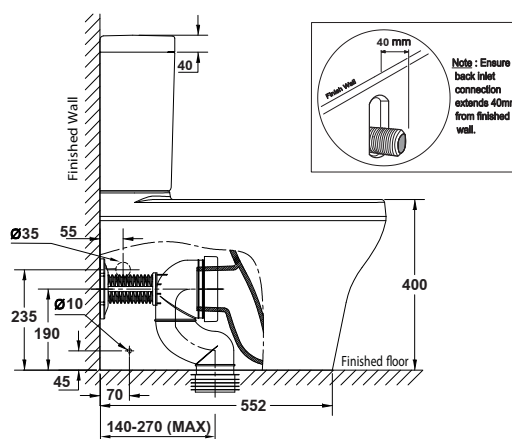
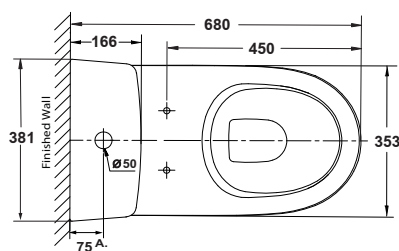


PORCHER
CYGNET C/C BTW T/SUITE (4*)



FEATURES

Recommended use	Domestic, hotel and commercial
Material	Vitreous China
Weight	Pan: 34 kg Cistern: 13 kg
Fixing	Toilet pan screwed and siliconed to floor. Cistern bolted directly to pan.
Warranty :	7 years domestic / 1 year commercial.

SPECIFICATIONS

Colour availability	White
Rim configuration	Box rim
Bowl configuration	P trap (converts to S using plastic s-bend provided)
Set out	S Trap 140 – 270 mm. (recommend 180mm) P Trap 190 mm. fixed
Pan fixing	Screwed to floor (fixing screws supplied) and bedded with sealant.
Cistern fixing	Bolted directly to bowl
Seat	Supplied with soft close seat.
Water inlet	Back inlet, left hand side or bottom inlet, left or right hand side. (Refer to Illustration)
Cistern	4.5/3 litre dual flush
Inlet valve	Rec. max operating pressure as per AS3500.1, clause 3.3.4 is 500Kpa
Wels	4 Star, 3.3 litre per average flush



To see the complete Porcher range go to
www.reece.com.au/bathrooms

CLEANING RECOMMENDATIONS

We recommend the use of soapy water or approved bathroom cleaners.

This bathroom product should not be cleaned with abrasive materials eg. steel wool / scourers. Do not use any corrosive or abrasive cleaning agents containing acids or scouring agents. Damage caused by any improper treatment is not covered by the product warranty-refer to warranty Conditions on the last page.



Disclaimer : Products in this specification manual must by regulation be installed by licensed and registered trade people. The manufacturer/distributor reserves the right to vary specifications or delete models from their range without prior notification. Dimensions and set-outs listed are correct at time of publication however the manufacturer/distributor takes no responsibility for printing errors.

Tech Page Version 2

Percher reece

PORCHER

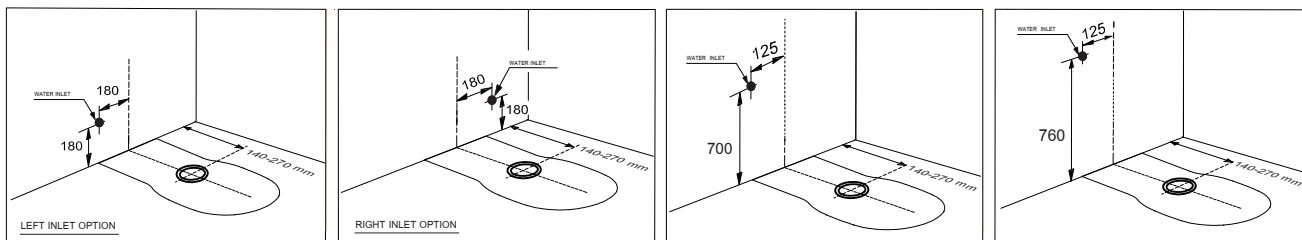
CYGNET C/C BTW TOILET SUITE (4*)

INSTALLATION INSTRUCTIONS

It is recommended that toilet seat and cover be installed after all trades are finished.

All measurements for roughing-in should be taken from finished wall / floor. Dimensions shown are nominal only

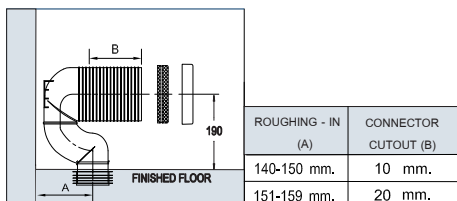
Water inlet set up.



Roughing - in position of water inlet set up should be follow the picture dimension as above.

S - trap connector

140 - 159 mm.



For in the case of roughing 140-159 mm. Should be cutout the connector follow the table at above (without fixing connector part)

S - trap connector

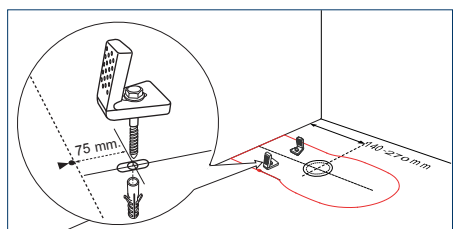
160 - 270 mm.

ROUGHING-IN (B)	CONNECTOR CUTOUT (B)	ROUGHING-IN (A)	CONNECTOR CUTOUT (B)	CONNECTOR CUTOUT (C)
160-170 mm.	30 mm.	221-230 mm.	90 mm.	C=116 - (A-160)
171-180 mm.	40 mm.	231-240 mm.	100 mm.	
181-190 mm.	50 mm.	241-250 mm.	110 mm.	
191-200 mm.	60 mm.	251-260 mm.	120 mm.	
201-210 mm.	70 mm.	261-270 mm.	130 mm.	
211-220 mm.	80 mm.			

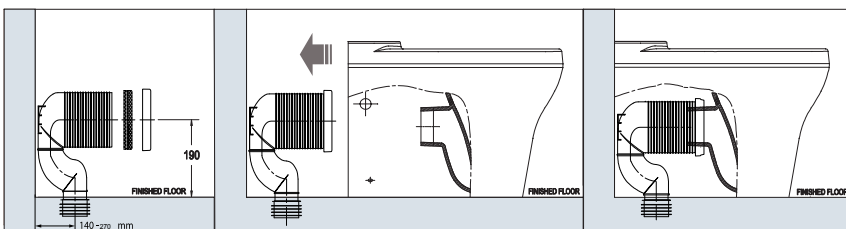
For in the case of roughing - in > 160 mm. Should be cutout the connector and fixing connector part follow the above table.

Fixing bracket &

S trap installation

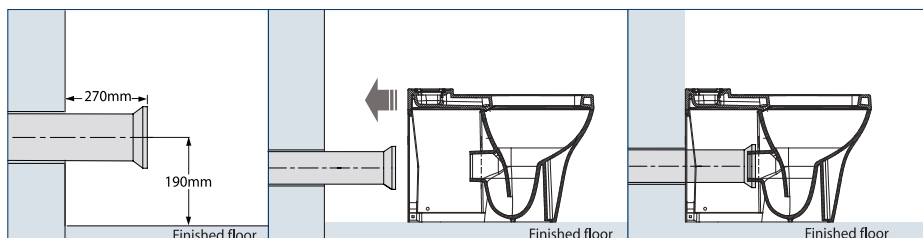


Install pan fixing brackets 75 mm. in from pan rim. position pan against wall and mark off pan fixing holes on floor.



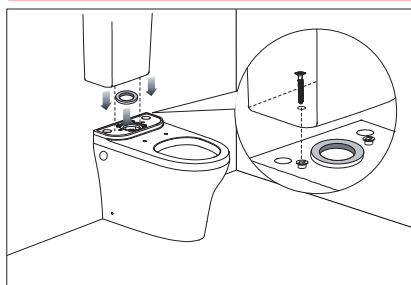
Push bend into waste and secure as required as to supplied with this bend. Push pan into position. Ensure that you make a firm connection with outlet pipes. Flush test for leaks.

P trap installation

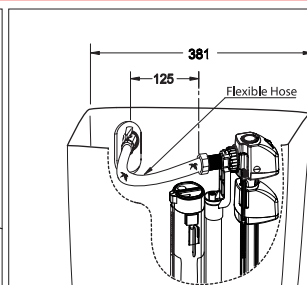


Push P trap into sewer. Push pan into position. Ensure that you make a firm connection with outlet pipes and avoid disrupting the floor fixing brackets. Flush test for leaks.

Cistern installation

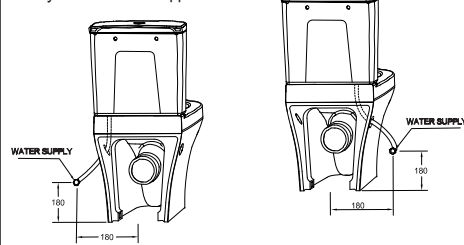


Gently lower cistern onto pan location fixing bolts into matching pan bolt holes.



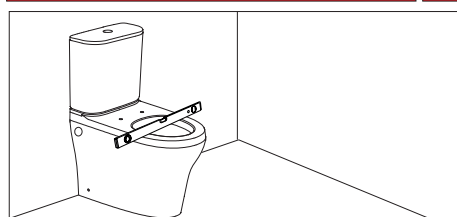
Back inlet : Connect rear water inlet valve using 15 mm M + F ball valve supplied.

*Only for bottom inlet applications



Bottom inlet : Connect bottom inlet using a recommended flexible hose and valve(not supplied)

Fixing pan to floor



Fill the cistern and ensure correct water level. For adjustment refer separate instructions for inlet.



Ensure that pan is level and that cisterns align with wall. Make minor adjustments if necessary.

Plumbers, please ensure a copy of the installation instructions is left with the end user for future reference

Porchet

reece

PORCHER

CYGNET C/C BTW TOILET SUITE (4*)



REECE PRODUCT QUALITY GUARANTEE

You have purchased a quality product from Reece Pty Ltd ABN 84 004 097 090 ("Reece"). This product is covered by a 7 year replacement product warranty and a 12 month warranty over spare parts and labour.

7 YEAR WARRANTY – DOMESTIC USE

This warranty covers faults in the product construction, material and assembly. Products which are within 7 years from the date of purchase, found upon inspection by an authorised Reece representative, to be defective in construction, material or assembly, will be repaired or exchanged with an equivalent product free of charge. Replaced items become Reece's property.

All replacement products will be available for collection without charge to the customer at the nearest Reece branch to the customer's location, or elsewhere as agreed between the customer and Reece.

Labour and Spare Parts

The labour for the replacement of products and spare parts to which this warranty applies will be supplied by Reece or relevant supplier using licensed plumbers engaged by Reece or relevant supplier within 1 year from the date of purchase. Spare parts (includes the toilet seat) other which are within 1 year from the date of purchase found upon inspection by an authorised Reece representative to be defective in construction, material or assembly, will be replaced free of charge.

Warranty Conditions

This warranty will apply only under all of the following conditions:

- The item has been installed by a licensed plumber
- The item has been installed for and subjected to domestic residential use only
- Failure is due to a fault in the manufacture of the product
- Proof of purchase (including the date of purchase) is provided
- The installation of the product is in accordance with the instructions provided

This warranty does not cover products purchased as an ex-display without being fully checked and tested for sale by the manufacturer.

This warranty does not include faults caused by:

- Unsuitable or improper use
- Incorrect installation or installation not in accordance with the instructions provided
- Installation or part installation by the purchaser or any person other than a LICENSED PLUMBER
- Normal wear and tear
- Inadequate or complete lack of maintenance
- Chemical, electrochemical or electrical influences
- Harsh detergents or abrasive cleaners used on product finishes

1 YEAR WARRANTY – COMMERCIAL USE

'Commercial' use is all use other than for normal domestic residential purposes, including use in non-business places as in public buildings, schools, sports centres and in establishments that contain private bathrooms with high frequency of use by many individuals, such as hotels, motels, retirement villages and hospitals.

The Commercial warranty covers this product against manufacturing faults in the construction, material and assembly of both the finished products and any spare parts for a period of 1 year from the date of purchase. Products and spare parts which are found upon inspection by an authorised Reece representative to be defective in construction, material or assembly will be repaired or exchanged free of charge. Replaced items become Reece's property. The labour for the replacement of products and spare parts to which this warranty applies will be supplied by Reece or relevant supplier using licensed plumbers engaged by Reece or relevant supplier. The Warranty Conditions and exclusions which apply to the domestic use warranty also apply to this commercial warranty.

EXCLUSIONS

To the fullest extent permitted by law, Reece excludes all liability for damage or injury to any person, damage to any property, and any indirect consequential or other loss or damage.

CLAIM PROCEDURE

For all warranty queries customers are to contact the branch where the product was purchased. These details can be found on your purchase invoice.

Our goods come with guarantees that cannot be excluded under the Australian Consumer Law. You are entitled to a replacement or refund for a major failure and for compensation for any other reasonably foreseeable loss or damage. You are also entitled to have the goods repaired or replaced if the goods fail to be of acceptable quality and the failure does not amount to a major failure.