

KADO

ERA ALL DRAWER (SINGLE CURVED END)



12mm benchtop / Feather Grey



20mm benchtop / Royal Battle Blue



50mm benchtop / Wolfram Green



90mm benchtop / Red Marble

SPECIFICATIONS

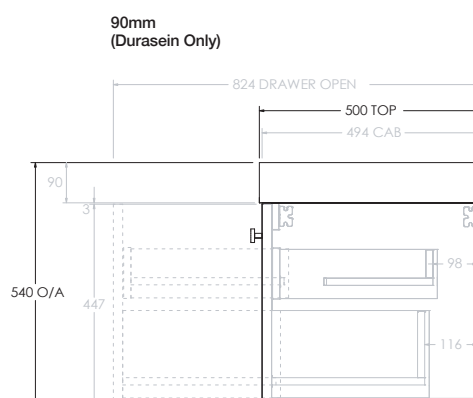
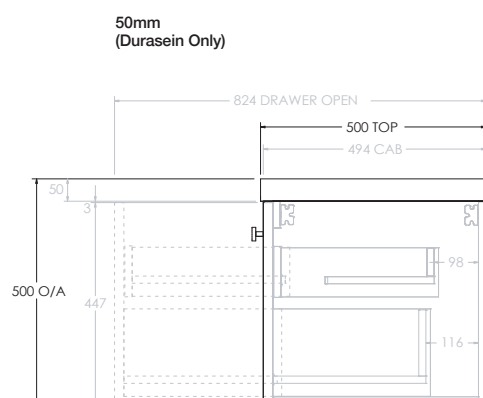
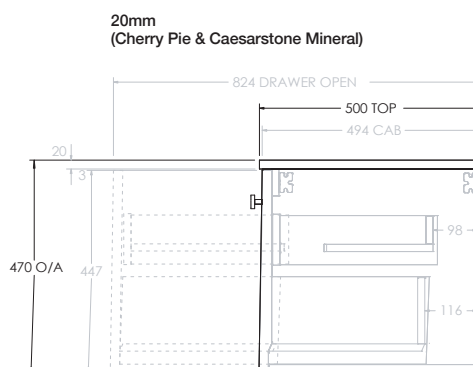
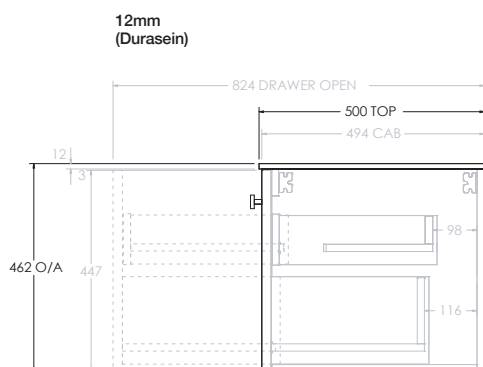
Recommended Use	Domestic, Hotel and Commercial
Vanity Top Material	12mm Durasein, 20mm Cherry Pie or 20mm Caesarstone Mineral (Surcharge applies). 50mm or 90mm Thick Benchtop available (Durasein only) Basin sold separately. For more information please refer to the Colour Finish and Material Variations Document.
Vanity Unit Material	MDF MR E0 (Medium Density Fibreboard, Moisture Resistant, Rated Emission Level E0)
Vanity Colour Variations	Matte White, Matte Feather Grey, Matte Black, Matte Royal Battle (Blue), Matte Wolfram (Green), Matte Red Marble
Interior Finish	Fresh White
Tap Hole Availability	0, 1 or 3 Tap Holes (pending basin selection)
Waste	Chrome Universal Plug & Waste 40mm Outlet (included) Dura Short Trap (recommended for semi-inset basins)
Fixing	Bolted/Screwed to the wall by a licensed tradesperson (Fixings not included).
Drawers	Deluxe solid sided soft-close drawers in white OR Hettich AvanTech Push-To-Open Drawers in white Internal storage drawer in white
Inclusions	150mm radius, curved push-to-open shaker door. One end flat panel, suitable for against wall installation.
Handle Options	Handle Options: Blaze Handle, Cooper Knob or Seashell.
or	For finishes available refer to the Colour Finish and Material Variations Document.
Push-to-Open Drawer(s)	OR Push-to-Open option.

KADO

ERA ALL DRAWER (SINGLE CURVED END)

STANDARD SIZES	600mm	750mm	1050mm	1350mm	1650mm
Width (mm)	605	755	1055	1355	1655
Depth (mm)	500	500	500	500	500
Height (mm) - 12mm Benchtop (Durasein Only)	462	462	462	462	462
Height (mm) - 20mm Benchtop (Cherry Pie / Caesarstone Mineral)	470	470	470	470	470
Height (mm) - 50mm Benchtop (Durasein Only)	500	500	500	500	500
Height (mm) - 90mm Benchtop (Durasein Only)	540	540	540	540	540
Number of Drawer(s) (Including internal drawer(s))	2	2	2	4	4
Number of Doors (Curved End)	1	1	1	1	1
Basin Configurations	Centre	Centre	Centre/Offset	Centre/Offset/ Double	Centre/Offset/ Double

Side View - With Benchtop Options



KADO

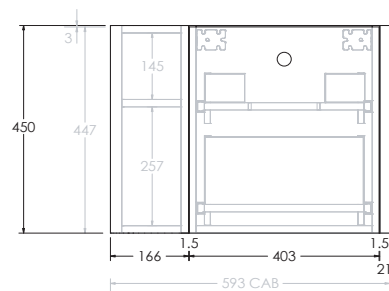
ERA ALL DRAWER (SINGLE CURVED END)

Single curve left shown, right is same but mirrored (Please indicate curve side on order form)

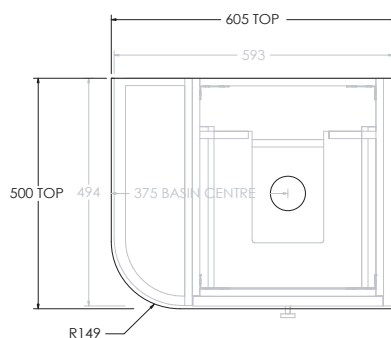
Below Front View specs are for cabinet details only, refer to page 2 for overall heights and benchtop options.

600mm

Front View

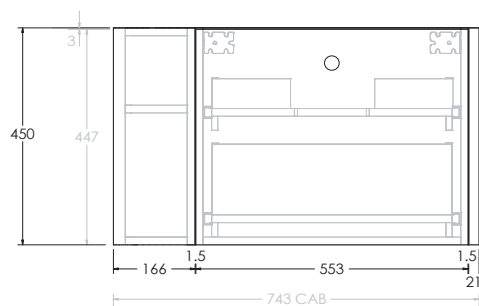


Top View
Centre

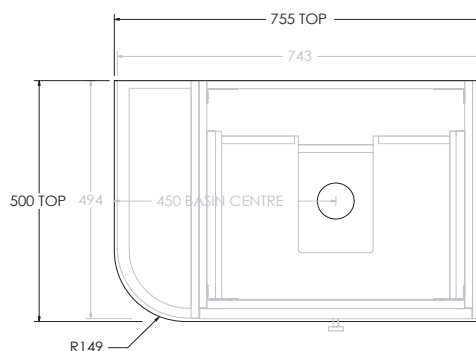


750mm

Front View



Top View
Centre



KADO

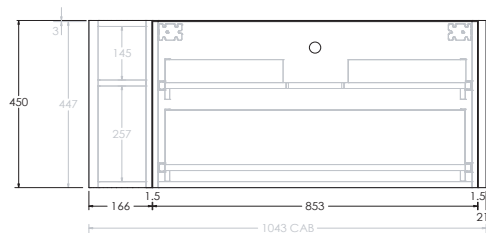
ERA ALL DRAWER (SINGLE CURVED END)

Single curve left shown, right is same but mirrored (Please indicate curve side on order form)

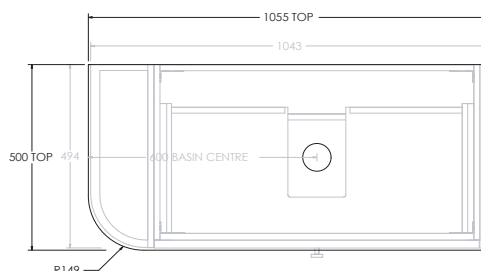
Below Front View specs are for cabinet details only, refer to page 2 for overall heights and benchtop options.

1050mm

Front View

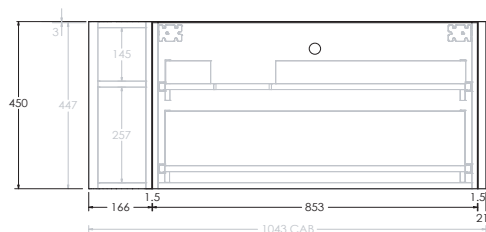


Top View
Centre

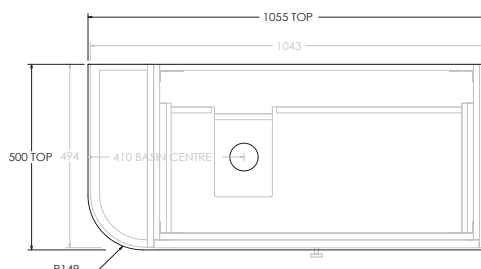


1050mm

Front View

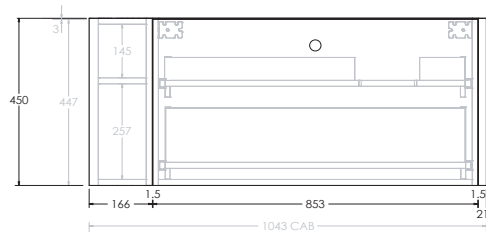


Top View
Offset (Left)

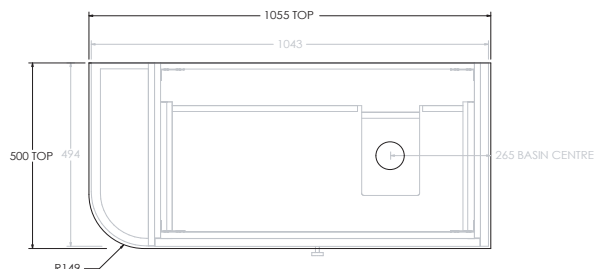


1050mm

Front View



Top View
Offset (Right)



KADO

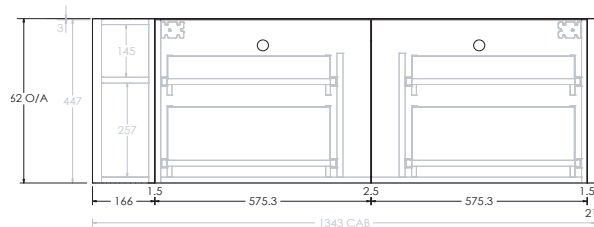
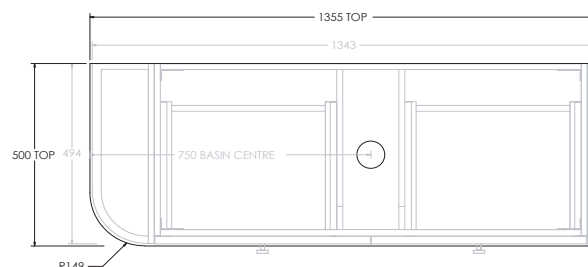
ERA ALL DRAWER (SINGLE CURVED END)

Single curve left shown, right is same but mirrored (Please indicate curve side on order form)

Below Front View specs are for cabinet details only, refer to page 2 for overall heights and benchtop options.

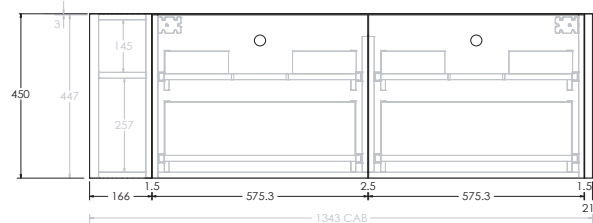
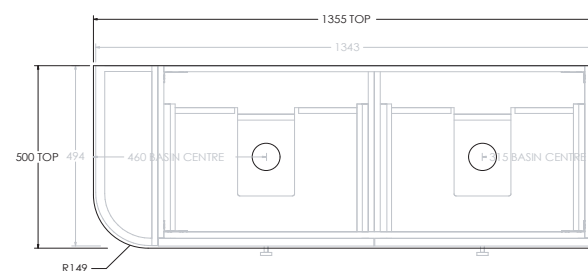
1350mm

Front View

Top View
Centre

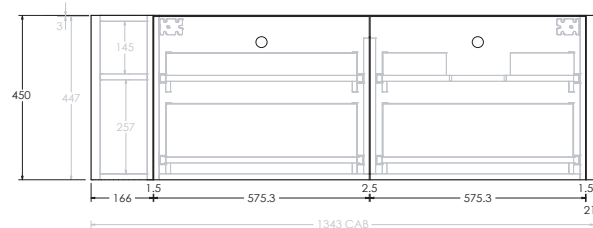
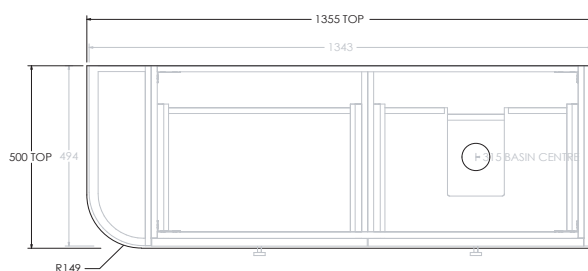
1350mm

Front View

Top View
Double

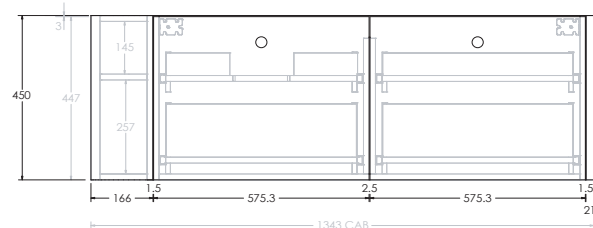
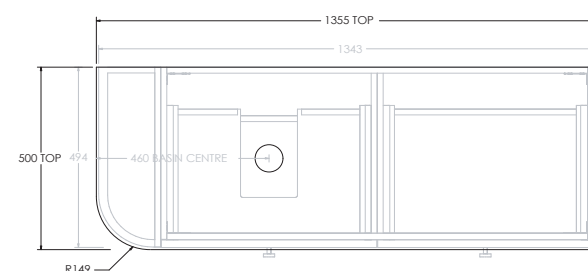
1350mm

Front View

Top View
Offset (Right)

1350mm

Front View

Top View
Offset (Left)

Please Note: Specs show benchtop overhang on flat end, specify on order form if end is up against wall to remove overhang (-6mm).

KADO

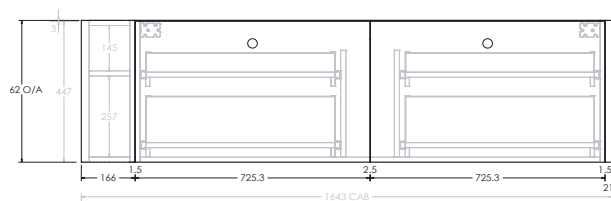
ERA ALL DRAWER (SINGLE CURVED END)

Single curve left shown, right is same but mirrored (Please indicate curve side on order form)

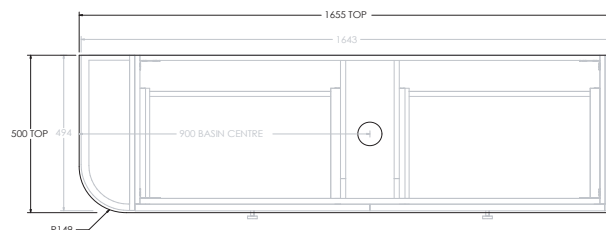
Below Front View specs are for cabinet details only, refer to page 2 for overall heights and benchtop options.

1650mm

Front View

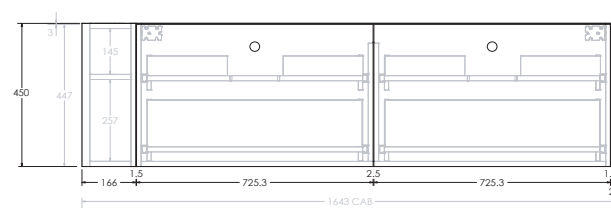


Top View
Centre

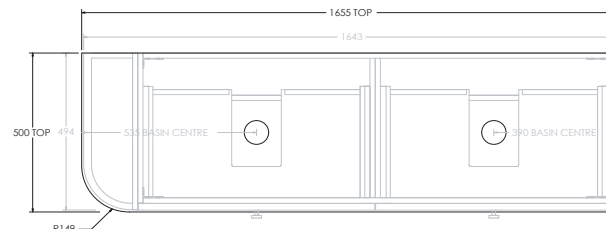


1650mm

Front View

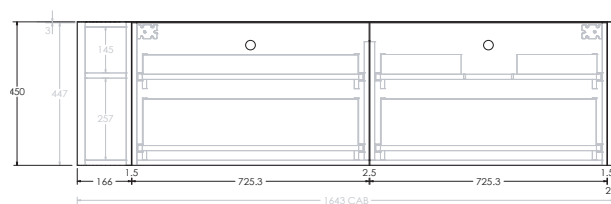


Top View
Double

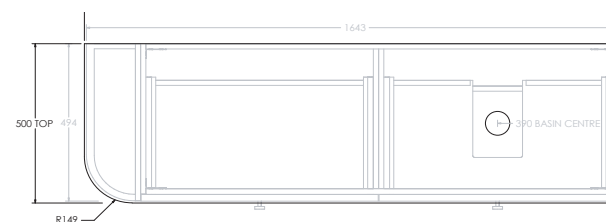


1650mm

Front View

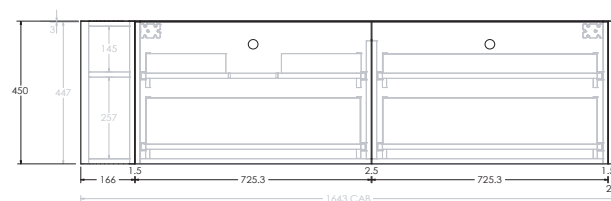


Top View
Offset (Right)

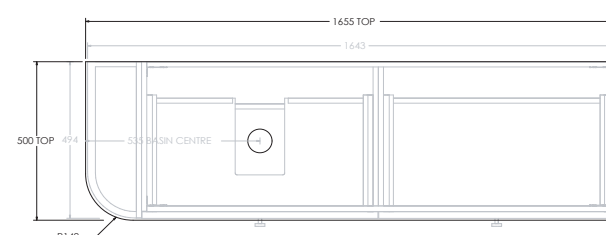


1650mm

Front View



Top View
Offset (Left)



Please Note: Specs show benchtop over hang on flat end, specify on order form if end is up against wall to remove overhang (-6mm).