



Compressor  
Voltage Code : FZ

**FH4522Z**

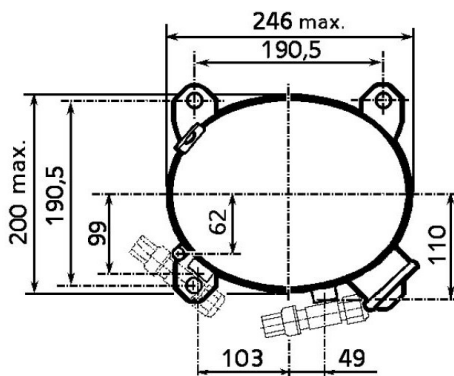
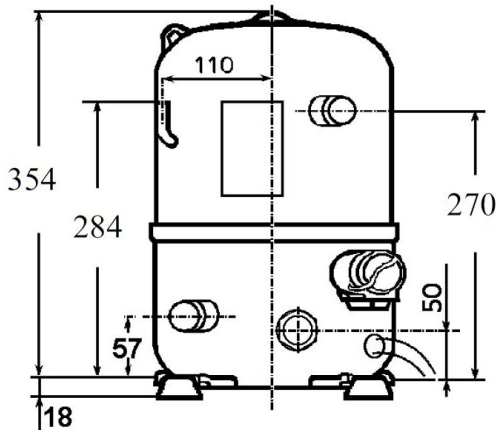
High Temp. Commercial (HP)

220 - 240V 1~ 50 Hz

R452A / R404A / R449A

**AHC4522ZFZ**

Conditions	Frequency	Nominal Cooling Capacity		Sound Power ISO3745 / ISO 3743-1
		Watts	BTU/h	
EN12900 / R452A	50 Hz	4623	15763	71 dBA
EN12900 / R404A	50 Hz	4611	15724	71 dBA
EN12900 / R449A	50 Hz	4627	15779	71 dBA



\* EN12900 : T°Cond. 50.0°C / T°Evap. 5.0°C / T°Return gas temp.. 20.0°C  
T°Subcooling. 0.0K

Certificates :



<b>Displacement (cc)</b>	39.9
<b>Net Weight (Kg)</b>	32.0
<b>Oil Quantity (cc)</b>	1330.0
<b>Oil Type</b>	Polyolester
<b>Expansion Device</b>	Capillary_Tube/Expansion_Valve
<b>Cooling</b>	Fan
<b>Main Winding (Ohm)</b>	1.3
<b>Start Winding (Ohm)</b>	4.2
<b>Current</b>	
RLA (A)	9.7
MCC (A)	16
LRA (A)	46
<b>Electrical Equipment</b>	CSR
<b>Overload</b>	Interne
<b>Start Capacitor</b>	125 µF / 330 V
<b>Run Capacitor</b>	30 µF / 400 V
<b>Potential Relay</b>	RVA4I**
Pick Up	204/233V
Drop Out	50/110V
Optional	3ARR3*6AU*
<b>Refrigerating connection for OD</b>	
Suction Tube	15.9 (5/8")
Discharge Tube	12.7 (1/2")
Process Tube	6.35 (1/4")

Note : Tecumseh reserves the right to change information contained in this document without notification.



**Tecumseh**

<b>FH4522Z</b>	<b>Tension FZ : 220 - 240V 1~ 50 Hz</b>
----------------	---

Les performances sont données dans les <b>conditions EN12900</b> :	Gaz aspirés :	20.0 °C
Condition Dew	Sous refroidissement :	0.0 K
The performance data are in <b>EN12900 conditions</b> :	Return gas :	20.0 °C
Dew Condition	Subcooling :	0.0 K

<b>50 Hz R452A</b>											
											<b>N°2106</b>
4   T condensation	5   T évaporation	(°C)	<b>-25</b>	<b>-20</b>	<b>-15</b>	<b>-10</b>	<b>-5</b>	<b>0</b>	<b>5</b>	<b>10</b>	<b>15</b>
<b>30</b>	1   P frigorifique	(Watt)	1554	2131	2819	3634	4592	5708	7000	8482	10171
	2   P absorbée	(W)	956	1102	1233	1354	1466	1573	1678	1785	1895
	3   I absorbée	(A)	4.48	5.08	5.64	6.17	6.66	7.12	7.54	7.92	8.28
<b>40</b>	1   P frigorifique	(Watt)		1629	2231	2935	3755	4708	5809	7075	8521
	2   P absorbée	(W)		1096	1271	1430	1575	1710	1838	1962	2085
	3   I absorbée	(A)		5.05	5.78	6.48	7.14	7.78	8.37	8.94	9.47
<b>50</b>	1   P frigorifique	(Watt)			1655	2245	2926	3713	4623	5670	6872
	2   P absorbée	(W)			1253	1467	1662	1842	2010	2168	2320
	3   I absorbée	(A)			5.72	6.60	7.44	8.25	9.03	9.77	10.5
<b>60</b>	1   P frigorifique	(Watt)				1576	2115	2735	3450	4278	5233
	2   P absorbée	(W)				1397	1659	1900	2124	2333	2530
	3   I absorbée	(A)				6.52	7.54	8.53	9.49	10.4	11.3

<b>50 Hz R404A</b>											
											<b>N°226CT-F</b>
4   T condensation	5   T évaporation	(°C)	<b>-25</b>	<b>-20</b>	<b>-15</b>	<b>-10</b>	<b>-5</b>	<b>0</b>	<b>5</b>	<b>10</b>	<b>15</b>
<b>30</b>	1   P frigorifique	(Watt)	1657	2246	2944	3766	4725	5838	7120	8584	10246
	2   P absorbée	(W)	1013	1163	1297	1419	1531	1637	1740	1843	1949
	3   I absorbée	(A)	4.75	5.36	5.93	6.46	6.96	7.41	7.81	8.18	8.51
<b>40</b>	1   P frigorifique	(Watt)	1188	1715	2323	3027	3840	4780	5859	7094	8499
	2   P absorbée	(W)	961	1161	1340	1500	1646	1780	1905	2024	2141
	3   I absorbée	(A)	4.56	5.35	6.09	6.80	7.47	8.09	8.68	9.22	9.72
<b>50</b>	1   P frigorifique	(Watt)		1201	1718	2303	2970	3734	4611	5615	6761
	2   P absorbée	(W)		1088	1328	1544	1740	1918	2082	2234	2379
	3   I absorbée	(A)		5.14	6.07	6.95	7.79	8.59	9.35	10.1	10.7
<b>60</b>	1   P frigorifique	(Watt)			1142	1607	2126	2715	3388	4160	5047
	2   P absorbée	(W)			1191	1479	1742	1981	2200	2403	2591
	3   I absorbée	(A)			5.85	6.90	7.92	8.90	9.83	10.7	11.6

1 = cooling capacity 2 = power input 3 = current 4 = condensing temperature 5 = evaporating temperature

**Nota : Tecumseh se réserve le droit de modifier les informations contenues dans ce document sans préavis.**

**Note : Tecumseh reserves the right to change information contained in this document without notification.**

© 2020 Tecumseh Products Company  
All rights reserved



**Tecumseh**

<b>FH4522Z</b>	<b>Tension FZ : 220 - 240V 1~ 50 Hz</b>
----------------	---

Les performances sont données dans les <b>conditions EN12900</b> :	Gaz aspirés :	20.0 °C
Condition Dew	Sous refroidissement :	0.0 K
The performance data are in <b>EN12900 conditions</b> :	Return gas :	20.0 °C
Dew Condition	Subcooling :	0.0 K

<b>50 Hz R449A (*)</b>											
											<b>N°2221</b>
4   T condensation	5   T évaporation	(°C)	<b>-25</b>	<b>-20</b>	<b>-15</b>	<b>-10</b>	<b>-5</b>	<b>0</b>	<b>5</b>	<b>10</b>	<b>15</b>
<b>30</b>	1   P frigorifique	(Watt)	1369	1925	2593	3390	4336	5447	6741	8236	9948
	2   P absorbée	(W)	891	1025	1149	1264	1373	1477	1579	1680	1783
	3   I absorbée	(A)	4.18	4.73	5.26	5.76	6.24	6.68	7.09	7.46	7.79
<b>40</b>	1   P frigorifique	(Watt)		1478	2068	2765	3586	4550	5674	6975	8472
	2   P absorbée	(W)		1029	1192	1342	1482	1611	1734	1851	1965
	3   I absorbée	(A)		4.74	5.42	6.08	6.72	7.33	7.90	8.43	8.92
<b>50</b>	1   P frigorifique	(Watt)			1558	2155	2854	3672	4627	5737	7020
	2   P absorbée	(W)			1184	1388	1577	1751	1914	2066	2210
	3   I absorbée	(A)			5.41	6.25	7.06	7.84	8.59	9.31	9.98
<b>60</b>	1   P frigorifique	(Watt)				1579	2157	2831	3620	4540	5609
	2   P absorbée	(W)				1328	1585	1824	2045	2252	2445
	3   I absorbée	(A)				6.20	7.21	8.19	9.14	10.1	10.9

© 2020 Tecumseh Products Company  
All rights reserved

<b>1 = cooling capacity 2 = power input 3 = current 4 = condensing temperature 5 = evaporating temperature</b>
(*) Veuillez vous référer strictement aux Recommandations d'Utilisation et Bulletins Marketing Tecumseh du fait de la température de refoulement élevée pour les applications LBP.
(*) Due to very high discharge temperature especially on LBP conditions, please strictly refer to Tecumseh Guidelines & Marketing Bulletin when using this refrigerant.
<b>Nota : Tecumseh se réserve le droit de modifier les informations contenues dans ce document sans préavis.</b>
<b>Note : Tecumseh reserves the right to change information contained in this document without notification.</b>