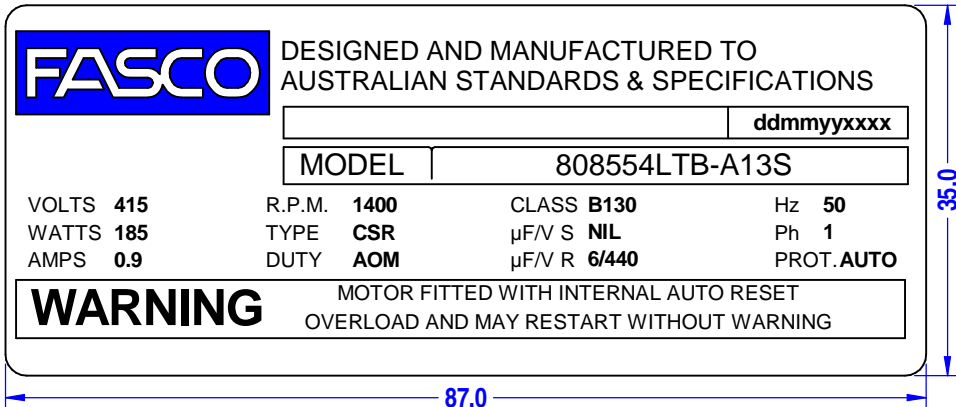
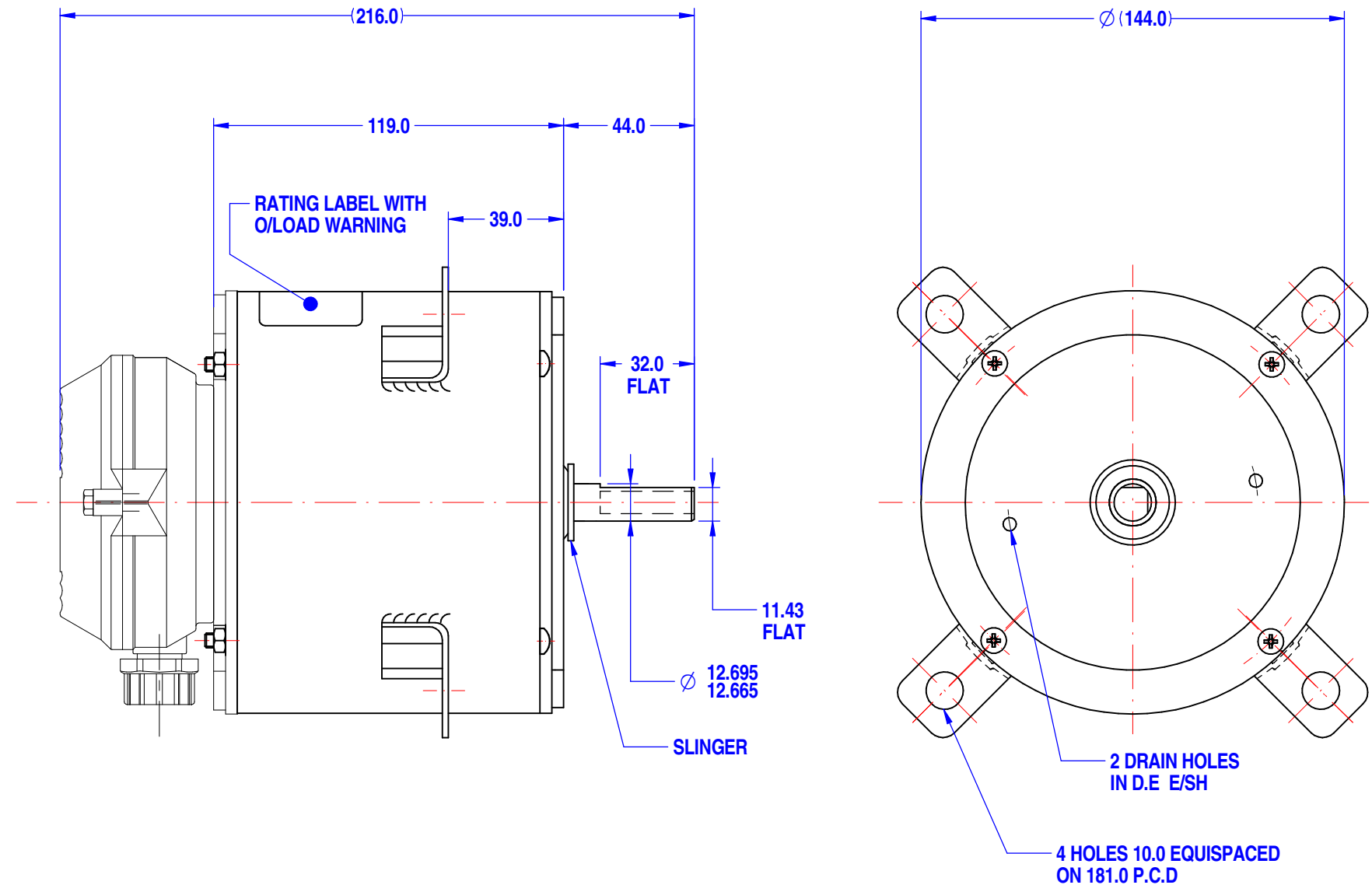



FINAL INSPECTED MOTORS MUST COMPLY WITH ELECTRIC MOTOR VIBRATION SPECIFICATION (ES049)

THIRD ANGLE PROJECTION.

Q.R. No.		-		CUSTOMER NO.		-		
CUSTOMER		-----						
MOTOR RATING	VOLTS	415	Hz	50	Ph	1	Duty	A.O.M.
	RPM.	1400			0.9			AMPS
	NOM. OUTPUT	185 WATTS						
ROTATION		ANTICLOCK WISE AT DRIVE END						
CAPACITOR		START	-----	µF/V	RUN	6/440		µF/V
ENCLOSURE		TOTALLY ENCLOSED						
MOTOR TYPE		CSR			INSULATION CLASS		B130	
THERMAL PROTECTION		AUTO RESET OVERLOAD						
APPLICATION		AXIAL FAN						
BEARING D.E.		6202 DDU			LUBRICATION		LONG LIFE, WIDE RANGE	
BEARING N.D.E.		6202 DDU						
SUPPLY LEAD		-----						
EARTH PROVISION		IN TERM. BOX						
BASIC BUILD SPECIFICATION		305-570-09			PAINT/ COLOUR		PC GREY CASE PLAIN E/SHIELDS	
PERFORMANCE SPECIFICATION		SP85074-01						
CONNECTION DIAGRAM		305-504-13			RATING LABEL		SSTDAUTO.FMT	



<p>UNLESS OTHERWISE SPECIFIED : DIMENSIONS ARE IN MM. TOLERANCES</p> <p>DECIMALS ANGULAR</p> <p>.X ± 1.0 ± 30'</p> <p>.XX ± 0.1</p> <p>THIS DRAWING REMAINS THE PROPERTY OF FASCO MOTORS AND MAY NOT BE USED, COPIED OR ISSUED WITHOUT WRITTEN PERMISSION FROM FASCO MOTORS</p>	<p>MOTOR WEIGHT</p> <p style="text-align: center;">X.X</p> <p style="text-align: right;">kg.</p>			 <p>29/7-8 MOO 3, BANGKRUAY - SAINOI Rd., BANGKRANG, MUANG NONTABURI DISTRICT, NONTABURI 11000 THAILAND</p>	FRAME	<p style="text-align: center;">MOTOR</p> <p style="text-align: center;">B074:8554T-185-HBH</p>		
	DRAWN	muntana	15/07/2006		STATUS			
	CHECKED	Pipat	27/12/2018		R			
	RELEASED	Suksakorn	27/12/2018		SHEET	DWG. NO.	<p style="text-align: center;">808554LTB-A13S</p>	<p>REVISION</p> <p style="text-align: center;">B</p>
	SCALE	N.T.S.			A3			

BY: Muntana	MIC	B: Remove C-click mark from sale drawing
-------------	-----	--