

**NOTE:** REGAL AUSTRALIA IS HAPPY TO PROVIDE TECHNICAL ASSISTANCE TO OUR CUSTOMERS IN MANY AREAS. HOWEVER, SINCE REGAL AUSTRALIA IS NOT AWARE OF ALL DATA CONCERNING THE USE AND APPLICATION OF THIS MOTOR, THE SUITABILITY OF THE MOTOR FOR THE APPLICATION MUST BE DETERMINED BY AND IS THE RESPONSIBILITY OF THE CUSTOMER.



### MOTOR SPECIFICATION

CUSTOMER				
CUSTOMER P/N				
QR No.		CAPACITOR	uf / V	
POWER OUTPUT	20W	START	NIL	
MOTOR TYPE	SH/POLE	RUN	NIL	
SUPPLY	VOLTS	HERTZ	PHASE	POLES
	240	50	SINGLE	4
ENCLOSURE	TOTALLY ENCLOSED			
SPEED (RPM) AT RATED OUTPUT	1380	WINDING TYPE		
ROTATION	ANTI-CLOCKWISE (DRIVE END)			
INSULATION CLASS	F 155	DUTY	AOM	
THERMAL PROTECTION	AUTO RESET			
RATED CURRENT	0.52	AMPS AT RATED OUTPUT		
APPLICATION	FAN DRIVE			
MOUNTING	TAPPED HOLES IN ENDSHIELD			
BEARING & LUBRICATION	608ZZ WIDE RANGE, LONG LIFE			
SUPPLY LEAD	COLOUR	PVC GREY		
	LENGTH	750 <sup>+50</sup> / <sub>-0</sub> (45±5 STRIPPED)		
	TERMINALS	SPADES (6.3 Q.C.)		
	Q.C. HOUSING	NIL		
<input checked="" type="checkbox"/> MULTI STRAND <input type="checkbox"/> SINGLE CORE				
EARTH PROVISION	VIA SUPPLY LEAD			
BASIC BUILD SPECIFICATION				
PERFORMANCE SPECIFICATION				
SHAFT MATERIAL	MILD STEEL			
CONNECTION DIAGRAM	NIL	PAINT SPEC	NIL	

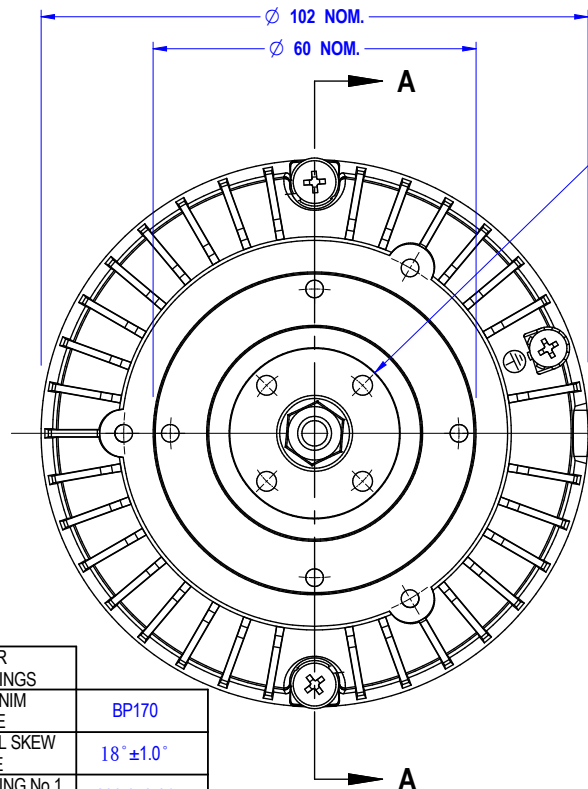
ROTOR END RINGS	ALUMINIM GRADE	BP170
	RADIAL SKEW ANGLE	18° ±1.0°
	END RING No.1 DRAWING	306-073-31
	END RING No.2 DRAWING	306-073-30

WINDING	
WIRE	0.25PEI-2
TURNS	680
OHMS	113

**SPECIAL REQUIREMENTS**

- 1) PLACE IN PLASTIC BAG AND ATTACH TO LEAD  
4 - SCREWS 3/16" BSW x 8.0mm PAN POSI HD.  
4 - SHAKEPROOF EXTERNAL WASHER 5mm I.D.
- 2) RUST PREVENTATIVE TO BE APPLIED TO MILD STEEL SHAFTS AFTER ASSEMBLY.
- 3) SHAFT MATERIAL 45 STEEL.
- 4) SINGLE CARTON, 6-MOTORS IN PLAIN BOX.

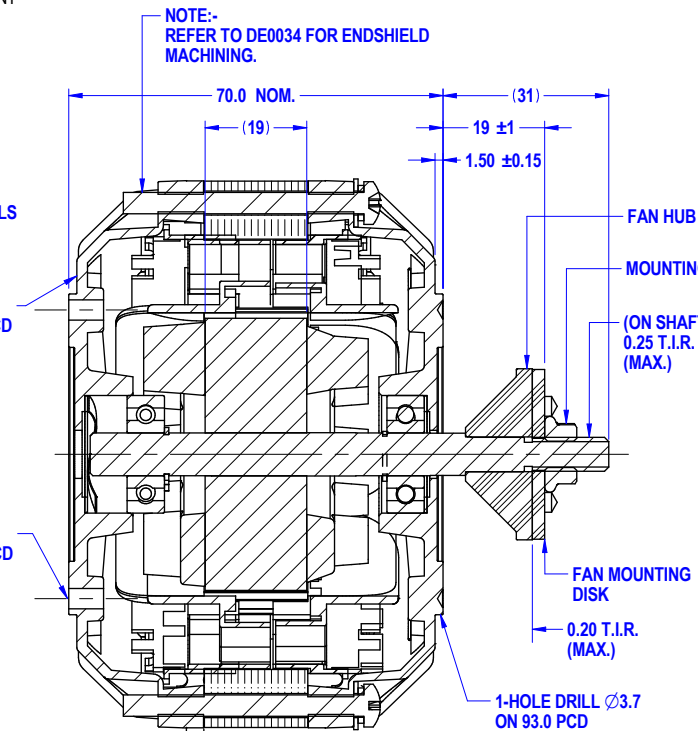
DO NOT SCALE PRINT



SURFACES MUST BE THOROUGHLY CLEANED PRIOR TO AFFIXING LABELS AT BOTH ENDS

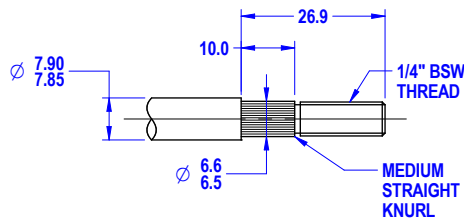
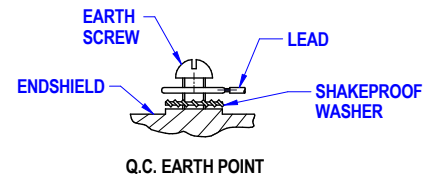
3 HOLES 3/16" BSW EQUISPACED ON 71.42 PCD

4 HOLES 3/16" BSW EQUISPACED ON 54.00 PCD



NOTE:- REFER TO DE0034 FOR ENDSHIELD MACHINING.

**SECTION A-A**



**END OF SHAFT DETAILS**

DIMENSIONS IN mm UNLESS OTHERWISE SPECIFIED  
 GENERAL TOLERANCES  
 LINEAR: X = ±1.0  
 XX = ±0.25  
 XXX = ±0.1  
 ANGULAR: X = 2°  
 XX = ±0.5°  
 SURFACE FINISHES IN MICRO METRES. MAX 3.0  
 SYMBOLS - A.S. 1100  
 This drawing remains the property of Regal Australia Pty. Ltd.  
 No part or parts of this drawing may be reproduced without written permission.

MAT'L		
FINISH		
DRAWN	MURFETTR	08/05/07
CHECKED		
RELEASED		
SCALE	NTS	

**REGAL**  
 19 Corporate Avenue  
 Rowville, Melbourne  
 Victoria 3178, Australia

FRAME	MOTOR		REVISION
STATUS	4P 20W		
SHEET	DWG. NO.	50D551-02AT	C
A3			

MIC No. \_\_\_\_\_  
 By: Sritchal Date: 09/01/2018  
 MIC No. \_\_\_\_\_  
 C: SHOWN SECTION A-A