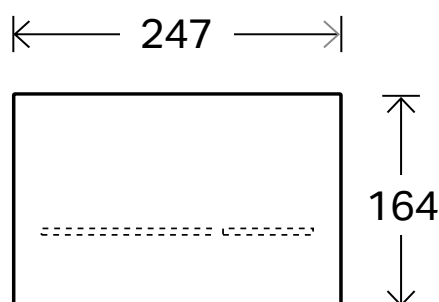
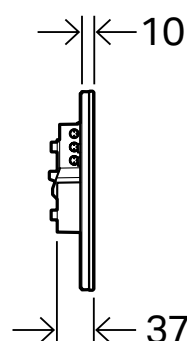


■ GEBERIT

SIGMA80 ELECTRONIC BUTTON/ACCESS PLATE



Dimensions are nominal measurements only.



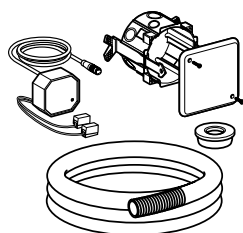
Sigma80 requires power supply installation set 9504026

SPECIFICATIONS

Recommended use	Domestic, hotel and commercial
Material	Glass
Colour Availability	Black, Smoked Reflective
Application	Dual-flush Actuator
Compatibility	Sigma8 Cistern
Operation	Electronic, Hands free
Standby power	<1 watt
Spare Parts	Guarantee of availability for 25 years
Technical Support	1800 Geberit



To see the complete GEBERIT range go to
www.reece.com.au/bathrooms



9504026 Installation set
(Included)



Sigma80 Black Glass
Sigma80 Reflective Glass



9507336
9507337

CLEANING INSTRUCTIONS

You have selected a Geberit product with a high-grade surface. Please follow the cleaning instructions so that your Geberit product will give you many years of pleasure.

Never use aggressive cleaners that contain chlorine, are acidic, abrasive or corrosive.

Only use water and a mild cleaning agent.

1. Clean the unit with a soft cloth soaked in water.
2. Dry with a soft cloth.

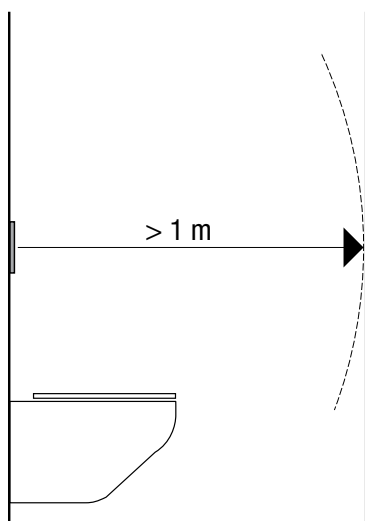
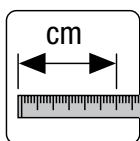
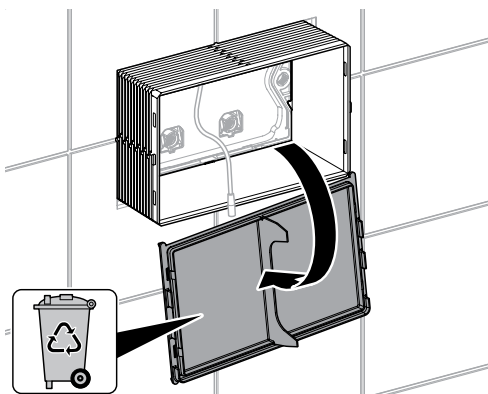
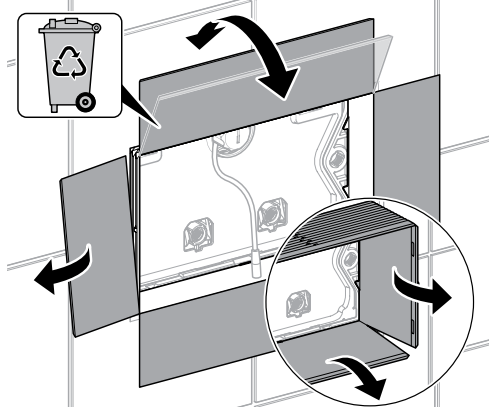
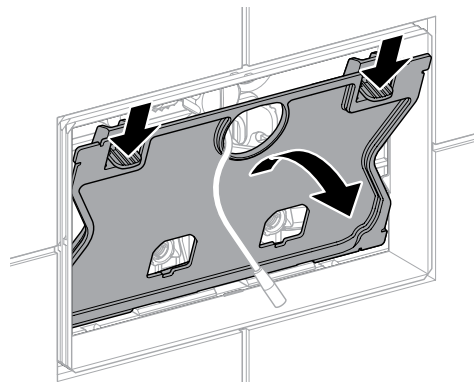
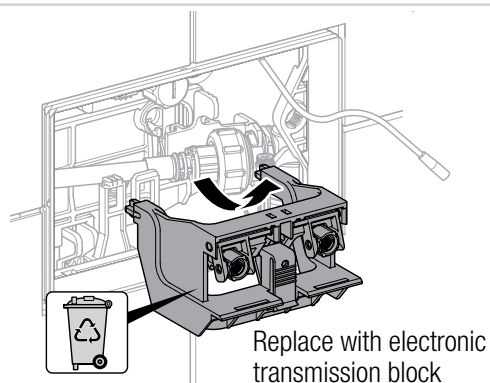
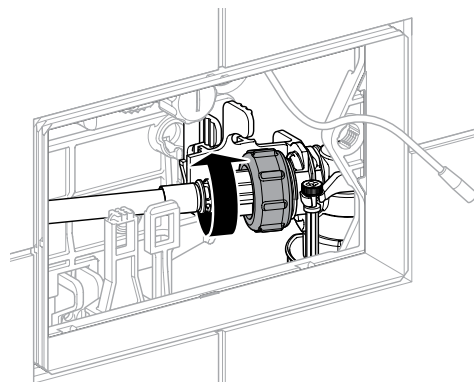
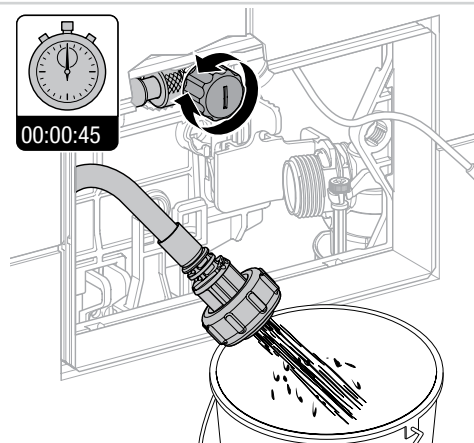
Damage caused by any improper treatment is not covered by the product warranty. Refer to warranty Conditions.

Disclaimer: Products in this specification manual must by regulation be installed by licensed and registered trade people. The manufacturer/distributor reserves the right to vary specifications or delete models from their range without prior notification. Dimensions are nominal measurements only. Dimensions and set-outs listed are correct at time of publication however the manufacturer/distributor takes no responsibility for printing errors.

Tech Page – Version 1

■ GEBERIT **SIGMA80 ELECTRONIC** **BUTTON/ACCESS PLATE**

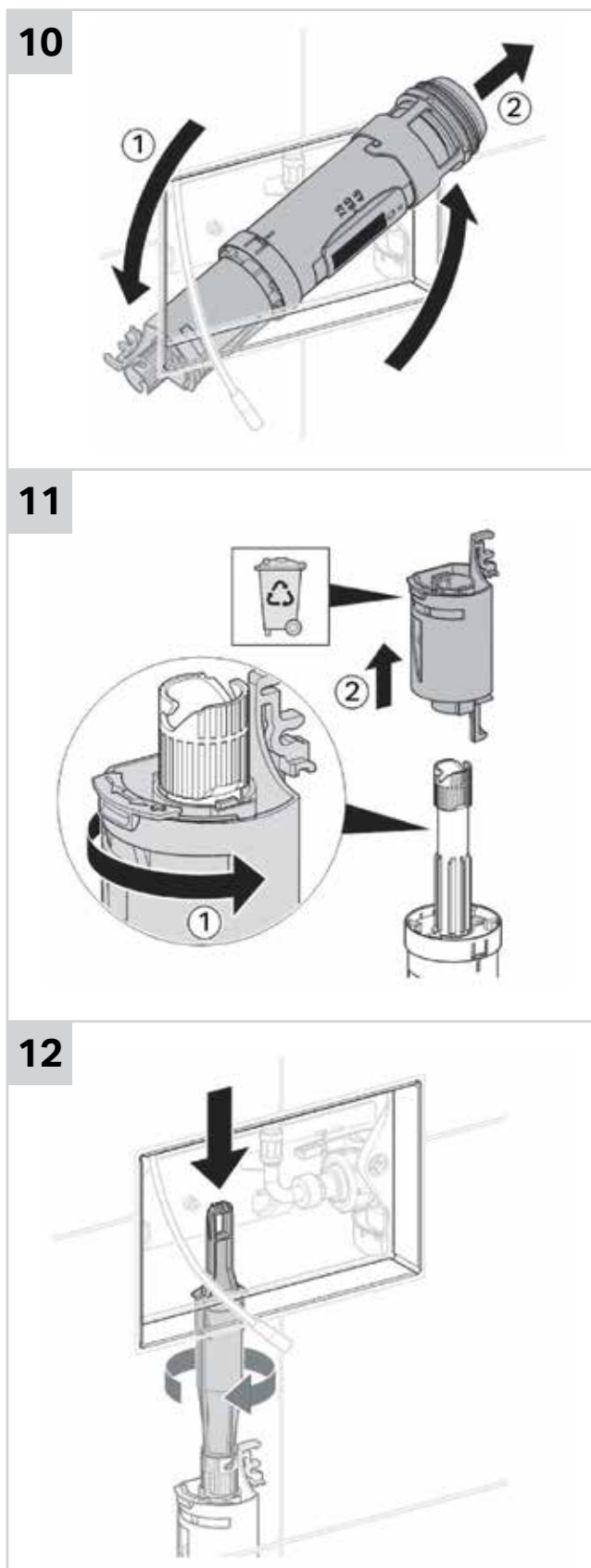
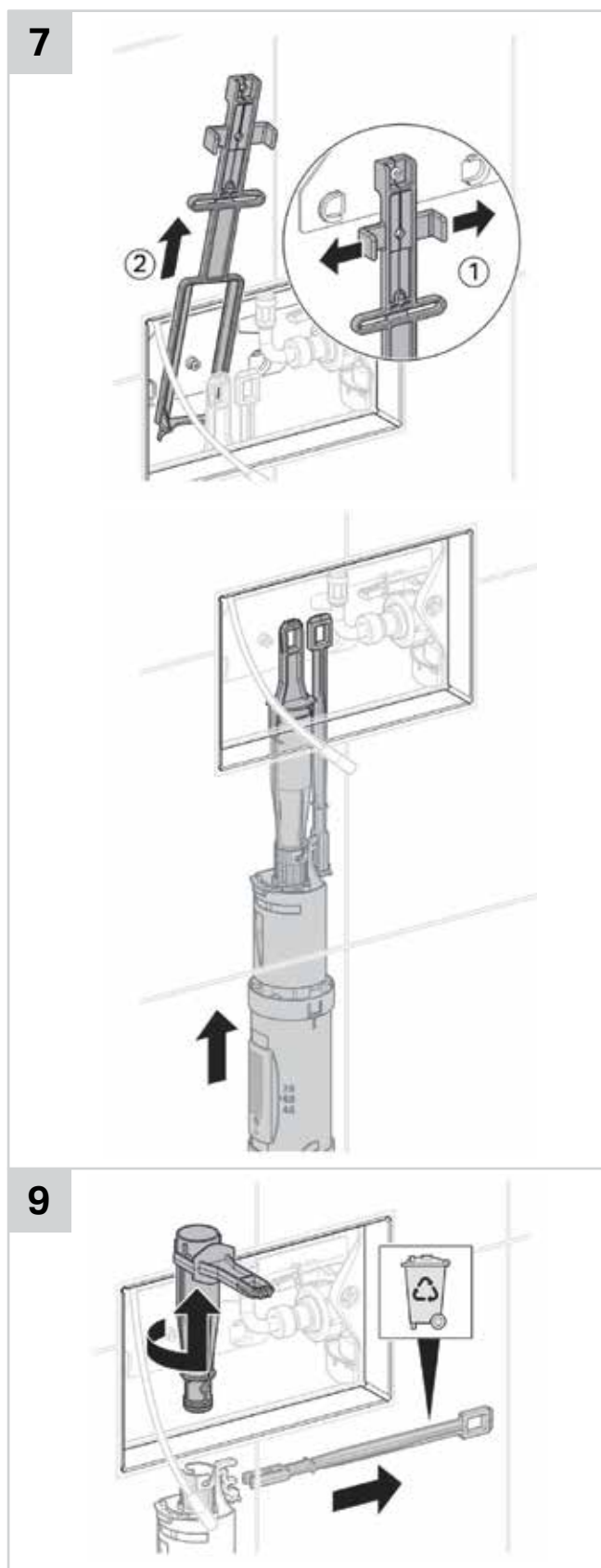
INSTALLATION INSTRUCTIONS


1

2

3

4

5

6


Plumbers, please ensure a copy of the installation instructions is left with the end user for future reference

■ GEBERIT **SIGMA80 ELECTRONIC** **BUTTON/ACCESS PLATE**

INSTALLATION INSTRUCTIONS

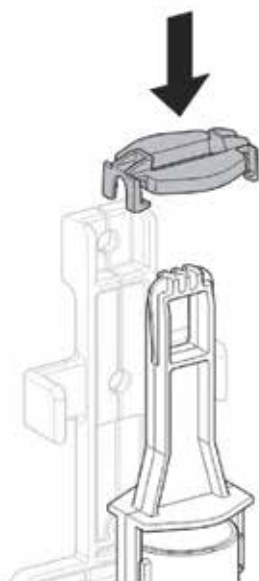
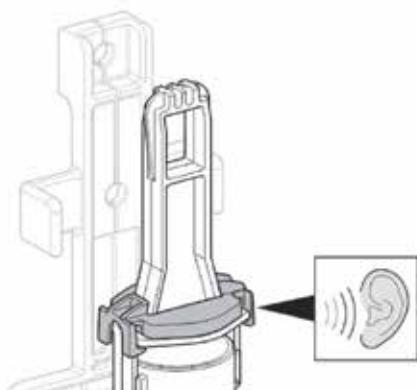
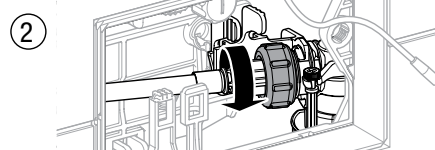
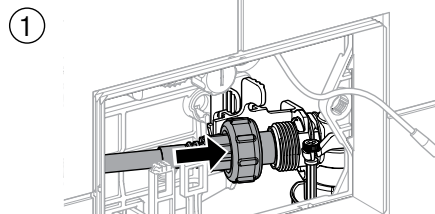
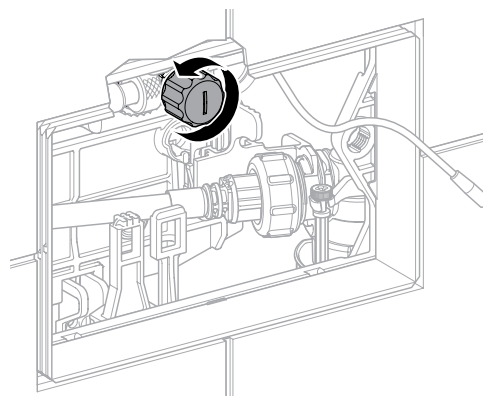
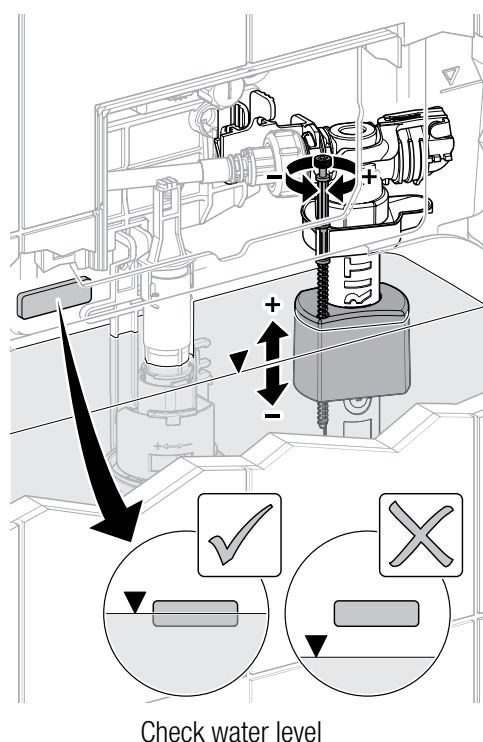


Plumbers, please ensure a copy of the installation instructions is left with the end user for future reference

■ GEBERIT **SIGMA80 ELECTRONIC** **BUTTON/ACCESS PLATE**

INSTALLATION INSTRUCTIONS

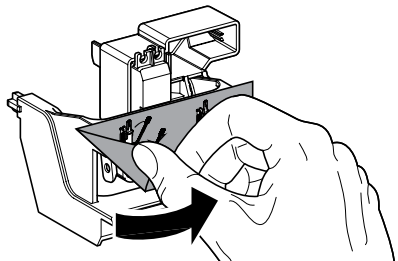
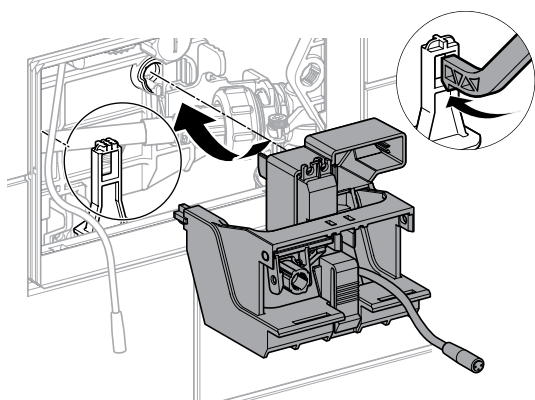
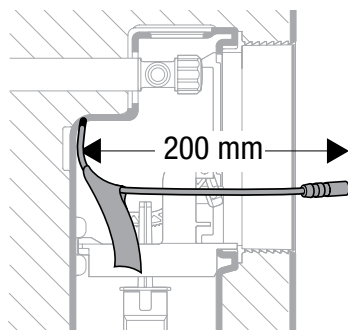
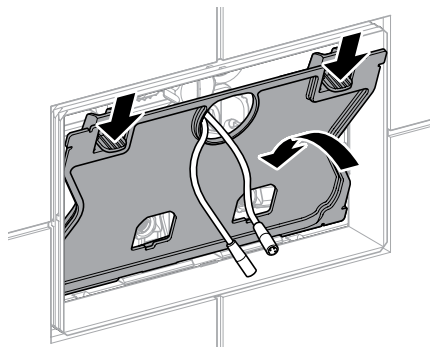
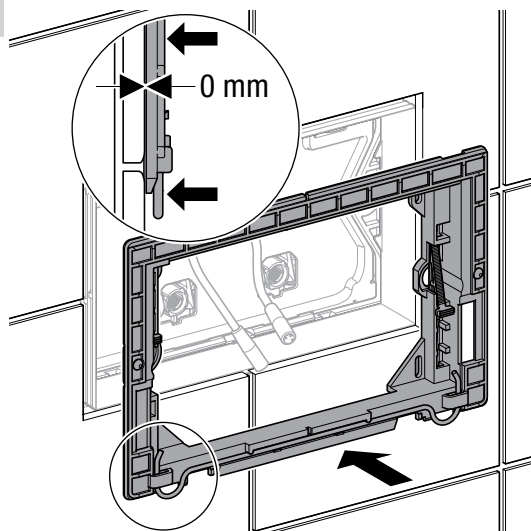
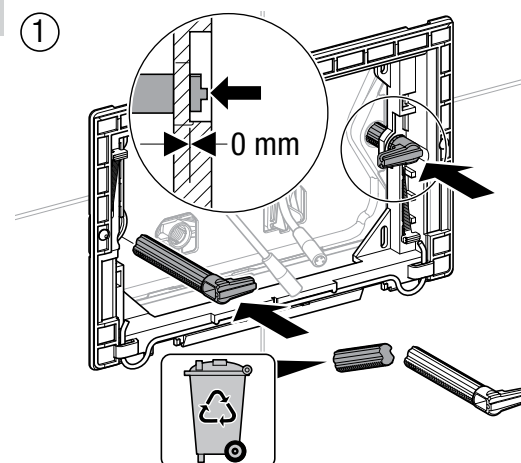
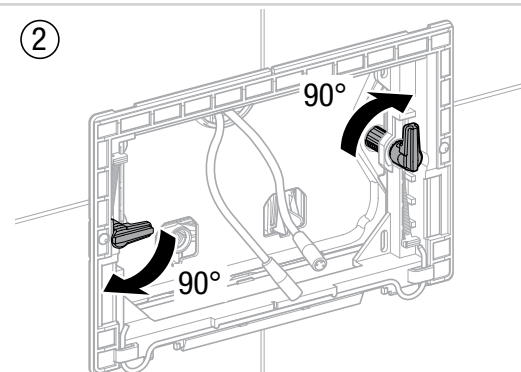
13

14

15

16

17

18


Plumbers, please ensure a copy of the installation instructions is left with the end user for future reference

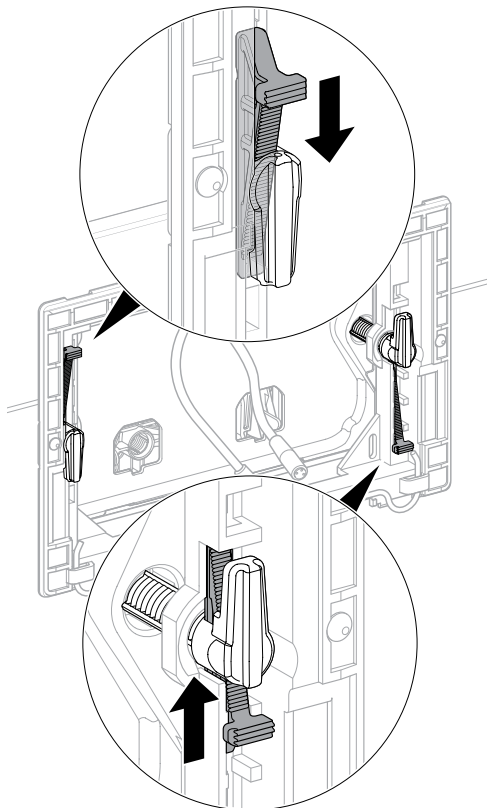
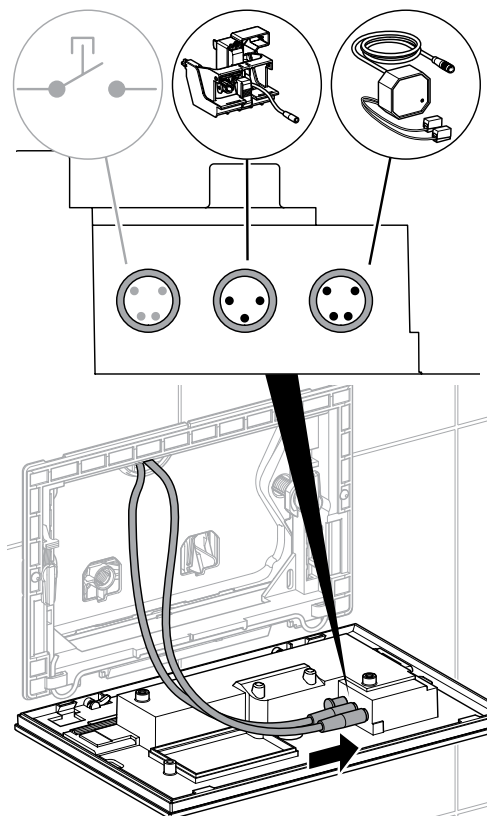
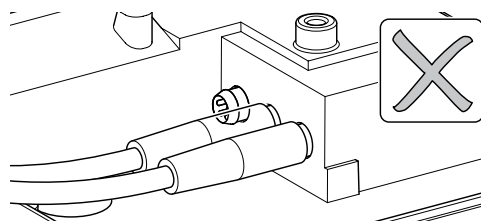
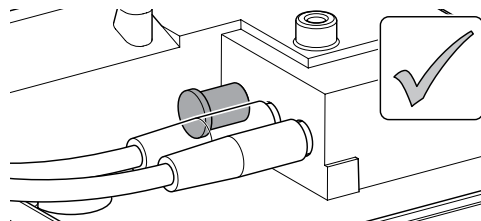
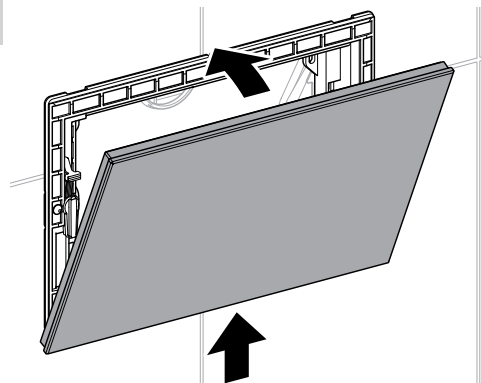
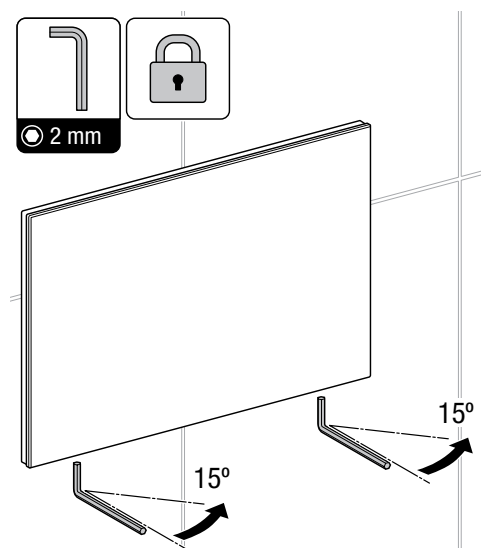
■ GEBERIT **SIGMA80 ELECTRONIC** **BUTTON/ACCESS PLATE**

INSTALLATION INSTRUCTIONS

19

20

i

21

22

23

②


■ GEBERIT **SIGMA80 ELECTRONIC** **BUTTON/ACCESS PLATE**

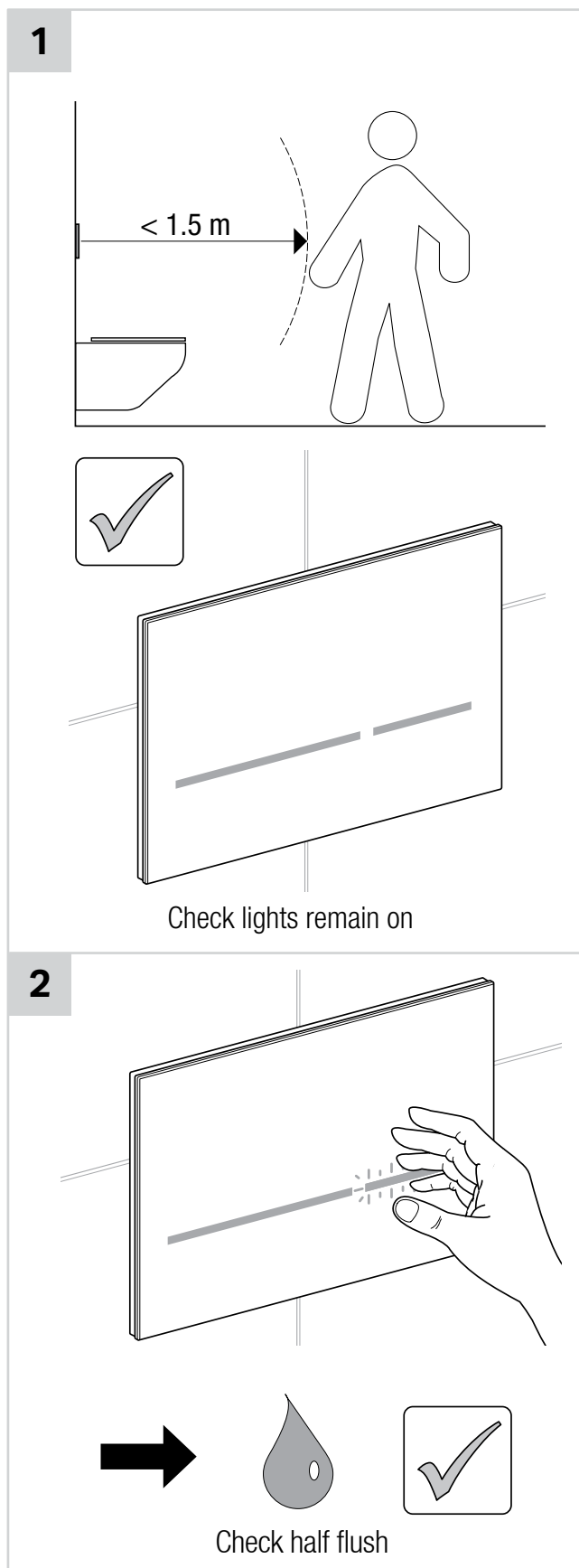
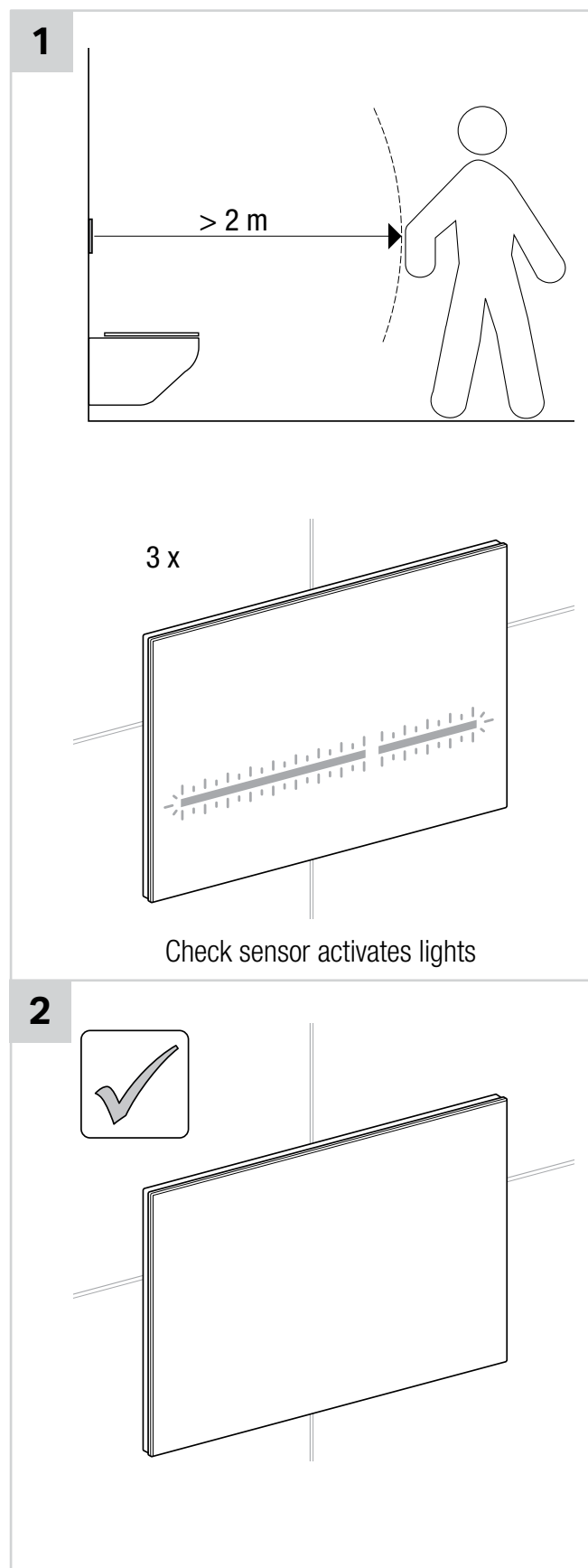
INSTALLATION INSTRUCTIONS

24

25

26

27

28


Plumbers, please ensure a copy of the installation instructions is left with the end user for future reference

■ GEBERIT **SIGMA80 ELECTRONIC** **BUTTON/ACCESS PLATE**

INSTALLATION INSTRUCTIONS

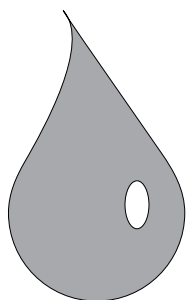
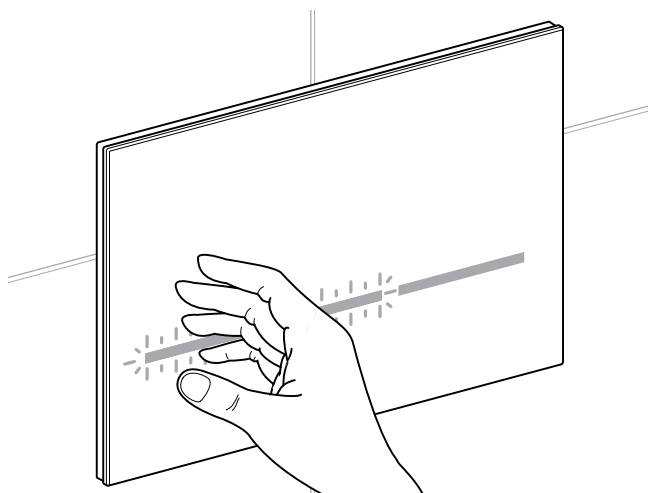


Plumbers, please ensure a copy of the installation instructions is left with the end user for future reference

■ GEBERIT

SIGMA80 ELECTRONIC BUTTON/ACCESS PLATE

INSTALLATION INSTRUCTIONS

3

Check full flush

■ GEBERIT
SIGMA80 ELECTRONIC
BUTTON/ACCESS PLATE

INSTALLATION INSTRUCTIONS

EN

Intended use:

The installation set with mains transformer is intended to provide a power supply for Geberit WC flush controls.

This product may only be mounted by qualified persons in accordance with EN IEC 62079:2001.

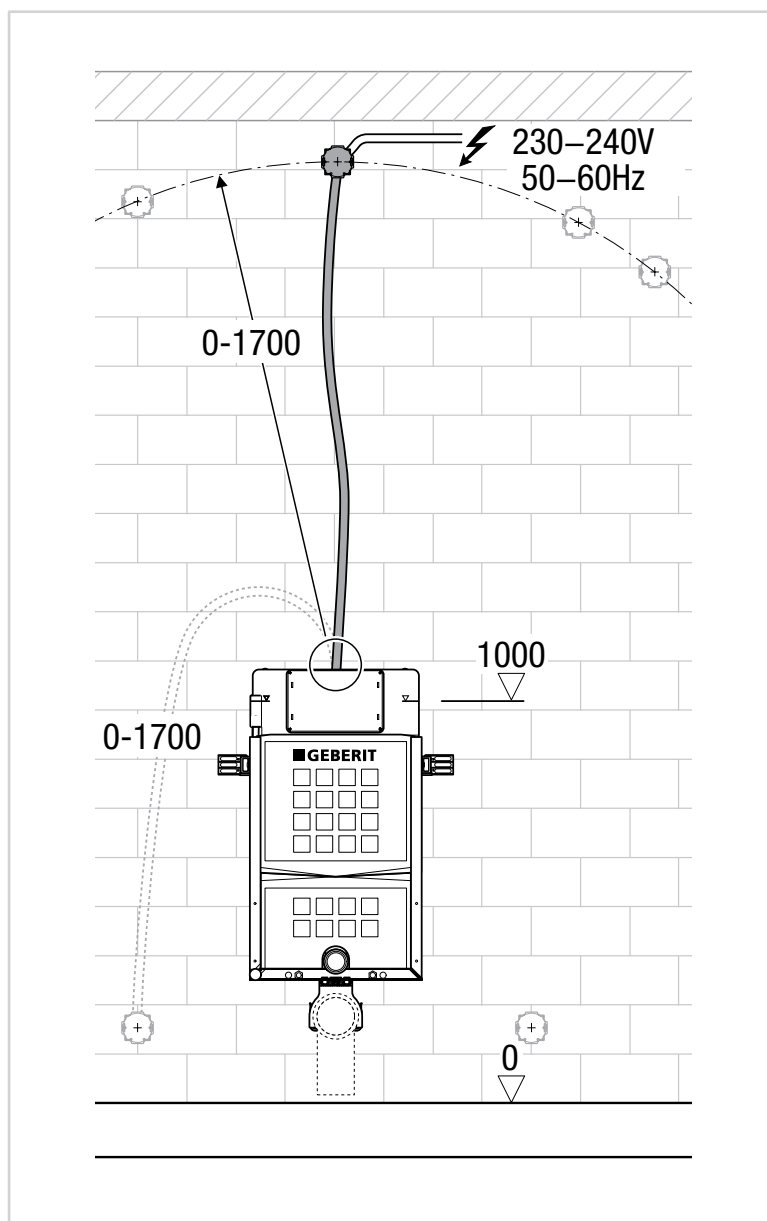


Connect the all-pole power switch in series with at least 3 mm contact opening.

■ GEBERIT

SIGMA80 ELECTRONIC BUTTON/ACCESS PLATE

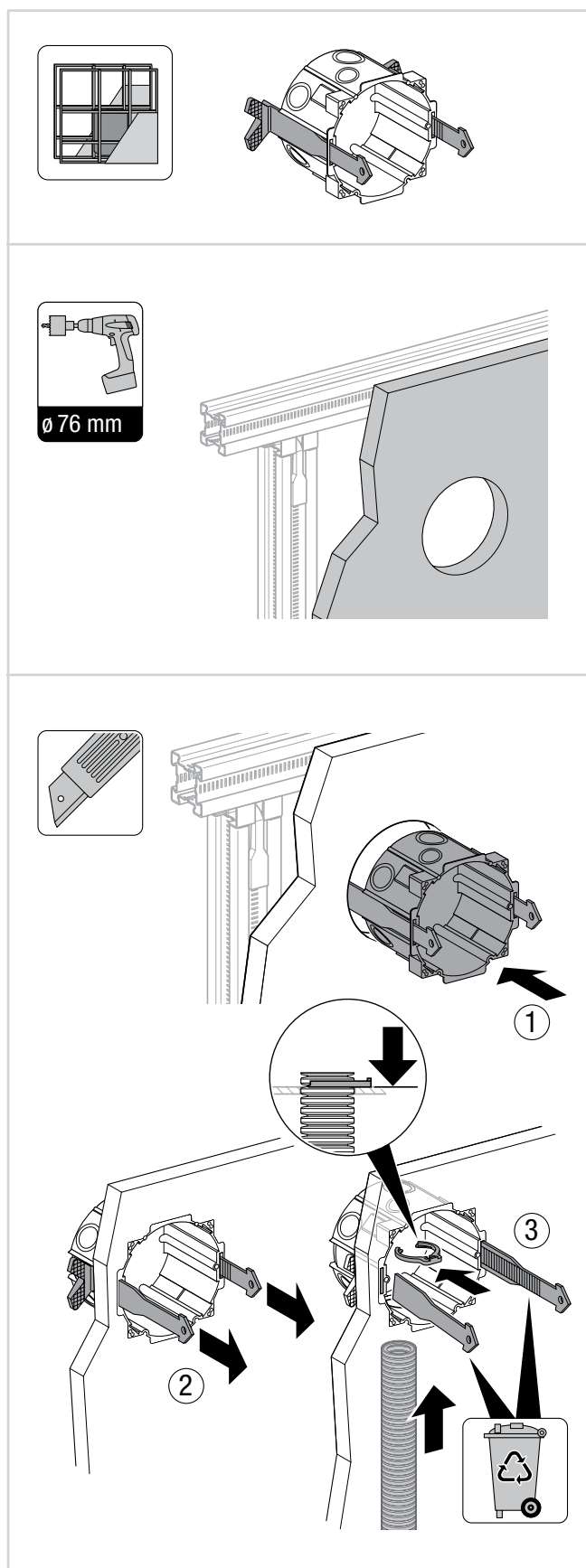
INSTALLATION INSTRUCTIONS



Plumbers, please ensure a copy of the installation instructions is left with the end user for future reference

■ GEBERIT **SIGMA80 ELECTRONIC** **BUTTON/ACCESS PLATE**

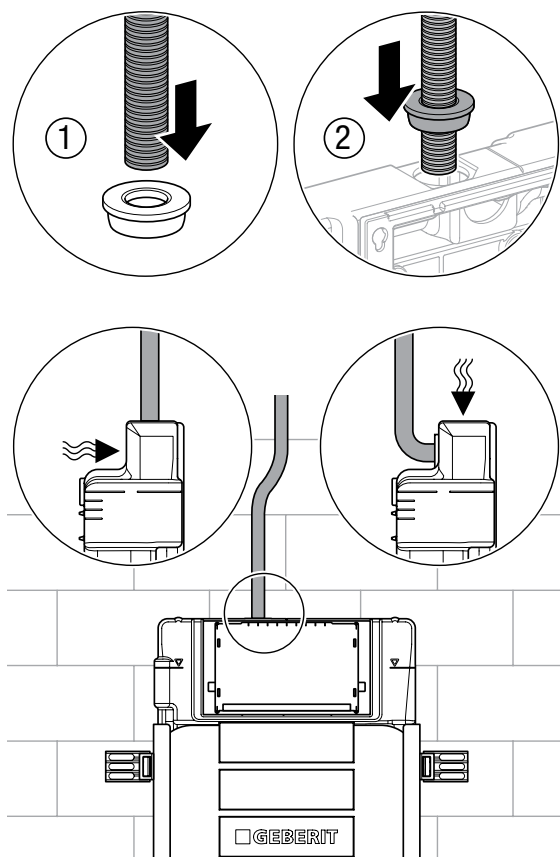
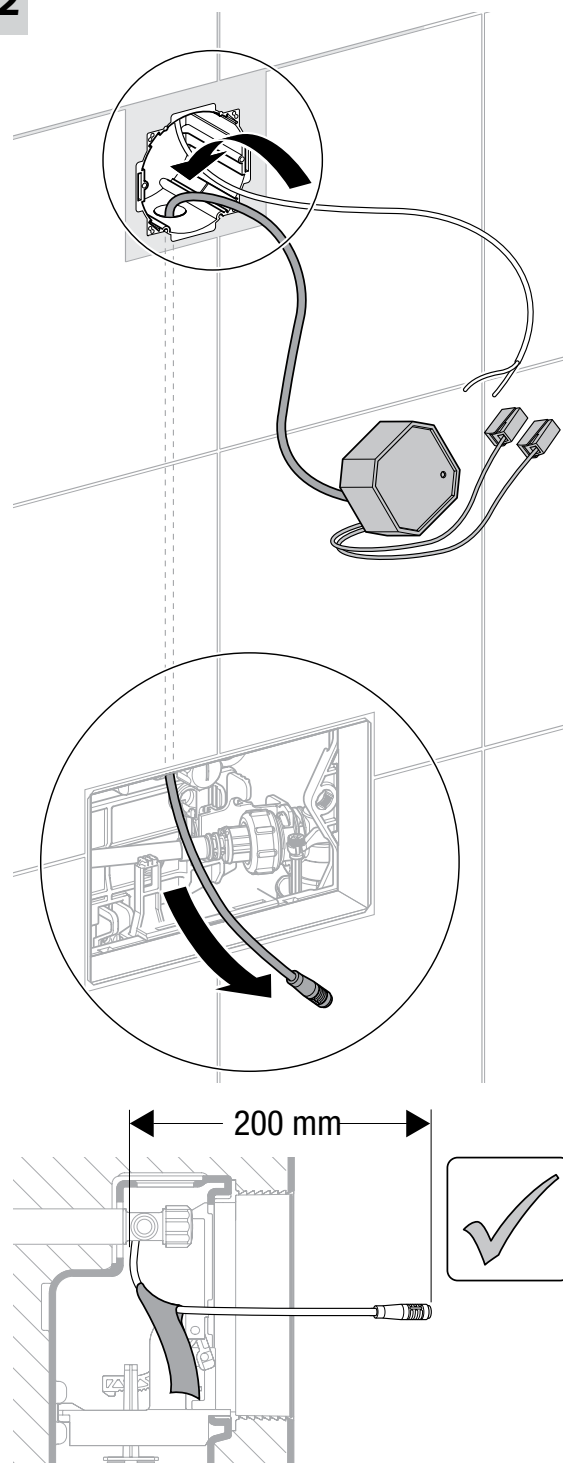
INSTALLATION INSTRUCTIONS



Plumbers, please ensure a copy of the installation instructions is left with the end user for future reference

■ GEBERIT **SIGMA80 ELECTRONIC** **BUTTON/ACCESS PLATE**

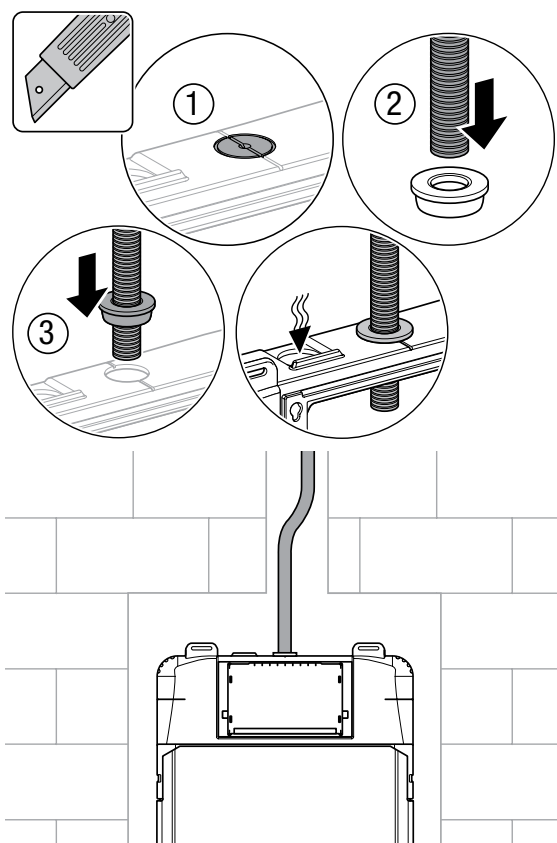
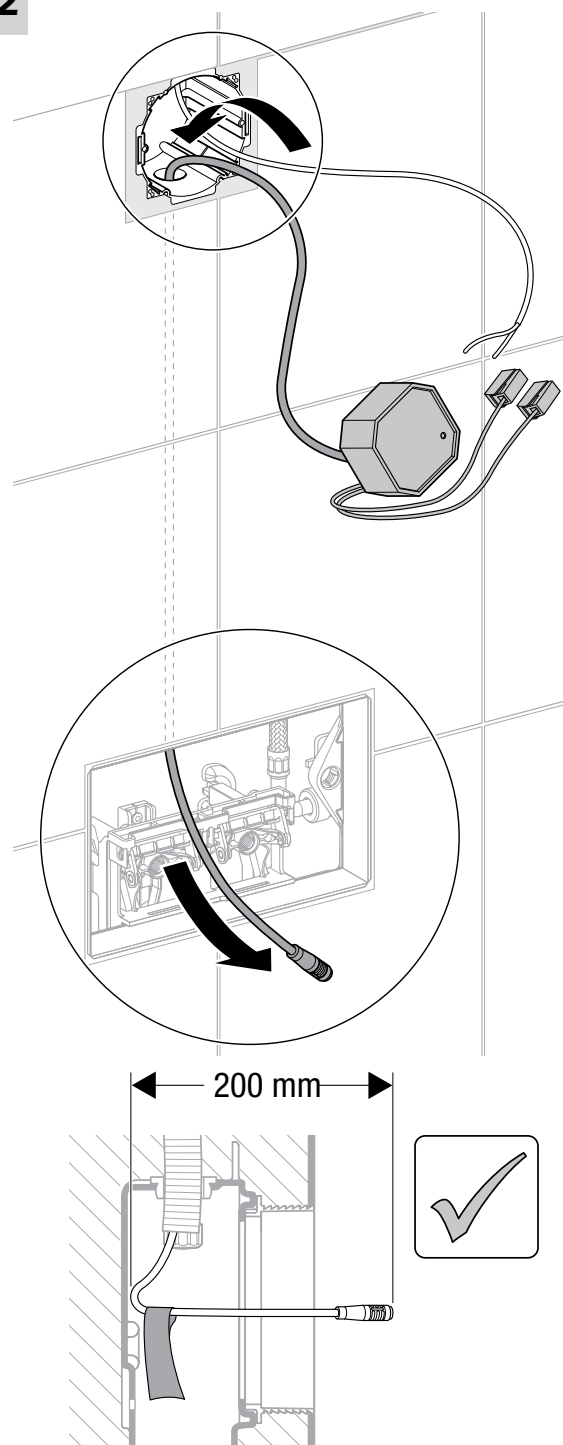
INSTALLATION INSTRUCTIONS

A1

A2


Plumbers, please ensure a copy of the installation instructions is left with the end user for future reference

■ GEBERIT **SIGMA80 ELECTRONIC** **BUTTON/ACCESS PLATE**

INSTALLATION INSTRUCTIONS

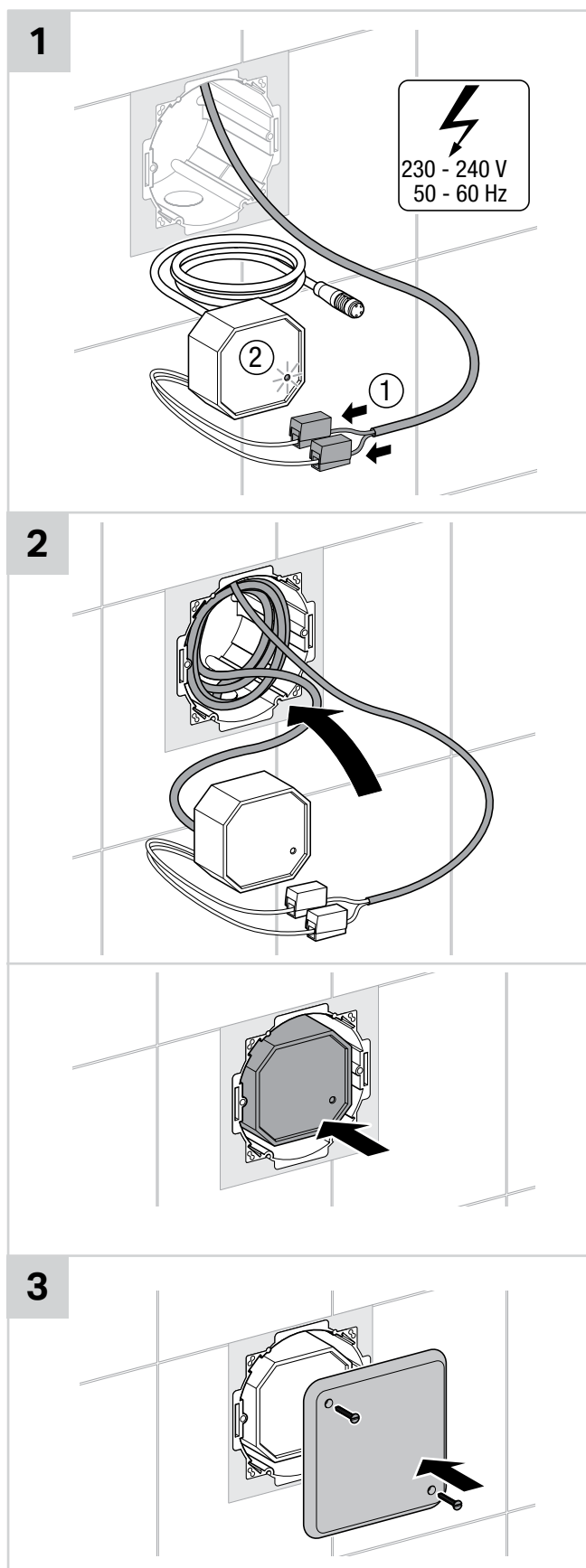
B1

B2


Plumbers, please ensure a copy of the installation instructions is left with the end user for future reference

■ GEBERIT

SIGMA80 ELECTRONIC BUTTON/ACCESS PLATE

INSTALLATION INSTRUCTIONS



Plumbers, please ensure a copy of the installation instructions is left with the end user for future reference

■ GEBERIT

SIGMA80 ELECTRONIC BUTTON/ACCESS PLATE

INSTALLATION INSTRUCTIONS

