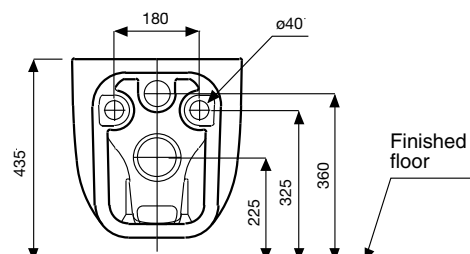
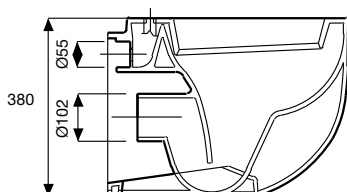
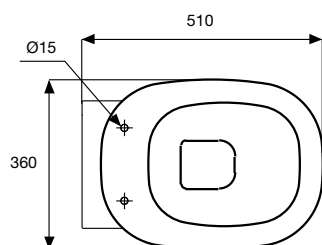


# POZZI GINORI

## 500 WALL HUNG PAN



### SPECIFICATIONS

<b>Recommended use</b>	Domestic, hotel and commercial
<b>Colour Availability</b>	White
<b>Rim configuration</b>	Box rim
<b>Bowl configuration</b>	P trap only
<b>Pan fixing</b>	Bolted to wall
<b>Seat</b>	Matching top fix seat supplied with suite.
<b>Material</b>	Vitreous China
<b>Weight</b>	Pan: 25kg
<b>Standards</b>	AS 1172.1 and AS 1172.2
<b>Flushing</b>	6/3 litre dual flush



To see the complete Pozzi Ginori range go to [www.reece.com.au/bathrooms](http://www.reece.com.au/bathrooms)

### CLEANING RECOMMENDATIONS

Any bathroom product should not be cleaned with abrasive materials eg. steel wool/scourers. Do not use any corrosive or abrasive cleaning agents containing acids or scouring agents. Bleaches can also discolour products and therefore should not be used. Damage caused by any improper treatment is not covered by the product warranty - refer to Warranty Conditions on the last page.



**Disclaimer:** Products in this specification manual must by regulation be installed by licensed and registered trade people. The manufacturer/distributor reserves the right to vary specifications or delete models from their range without prior notification. Dimensions and set-outs listed are correct at time of publication however the manufacturer/distributor takes no responsibility for printing errors.

Tech Page Version 2



# POZZI GINORI

## 500 WALL HUNG PAN

### INSTALLATION INSTRUCTIONS

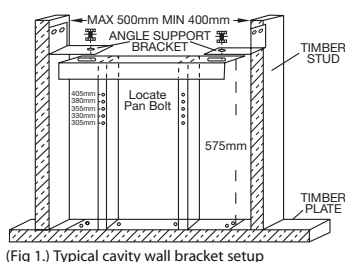
- Position Pan Bracket flush with front of timber plate/studs (Fig 1.)
- Secure bracket to timber plate using coach screws. (Note: Use dyna bolts – not supplied – for concrete floors)
- Adjust and align angle support brackets with wall studs and secure with coach screws. Fix to main bracket with bolt/nut supplied. Maximum distance between studs 500 mm Minimum distance between studs 400 mm (Fig 1.)
- Selecting locating holes for bolts: Measure 325 mm from estimated 'finish floor' level. Fit pan bolts and use lock nut to hold all-thread in position. (If bolts are set at 325mm from finished floor, the overall pan height will be 435mm)
- Height of Waste Outlet: Centre of waste outlet will be 100 mm below selected locating hole for pan bolts of 225mm from estimated finish floor level.
- Height of Inlet Pipe: Centre of inlet pipe will be 35 mm above selected locating hole for pan bolts or 360 mm from estimated finish floor level. (Fig 2.) (Ensure both inlet and outlet pipes are fixed rigidly prior to installing pan)

Note: Suggested [typical] Installation: Install by using a 40 mm flush pipe and a 40 mm key seal rubber (not supplied). Fit the key seal rubber to pan and lubricate for ease of installation.

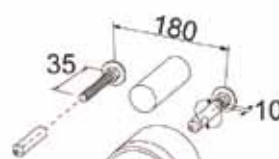
For other applications refer to, cistern/flush valve, manufacturers installation instructions.

- Screw the fixing bolts onto the protruding all-thread ensuring that the cavities are pointing outward (Fig.4). Protruding all thread will need to be cut to suit wall thickness.
- Insert the black fixing plugs into the pans wall fixing installation cavities. Carefully install pan onto brackets and fix into position with allen key provided (Fig.5).
- Ensure pan is level before fully tightening locknuts
- Flush test and check for leaks. Joint seal pan to wall using silicone.

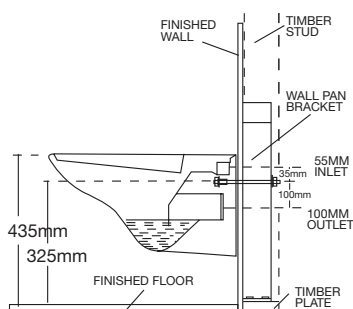
Note: For 'SOLID WALL' Installations see (Fig 3.) and follow steps (a, d, e, f, g, h, i & j)



(Fig.1) Typical cavity wall bracket setup



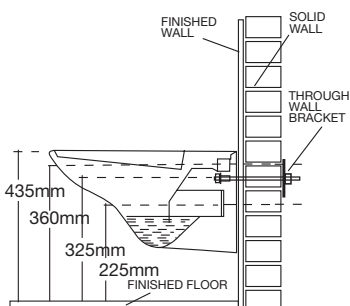
(Fig.4) Fixing bolt setup



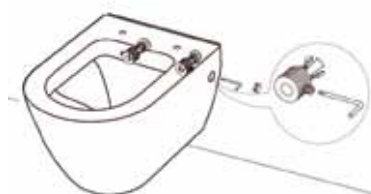
(Fig.2) Cavity wall installation (side view)



(Fig.5) Insert pan fixing plugs and push back onto fixing bolts.



(Fig.3) Solid wall installation (side view)



(Fig.6) Tighten grub screws using Allen key

#### Note:

In all circumstances the wall onto which the pan is mounted shall be capable of supporting the pan and load without deflection.

All measurements for roughing-in should be taken from finished wall/floor.

#### Installation of Toilet Seat and Cleaning (separate instructions enclosed)

It is recommended that toilet seat and cover be installed after all trades are finished. The high quality vitreous china finish on this sanitary ware can be maintained by simply using mild soapy water and wiping over. No abrasive cleaners or chemicals should be used on vitreous china surface or toilet seats as this may lead to surface damage.

Do not use any toilet cleaners in the cistern. As the chemical compound may effect the internal mechanisms.

# POZZI GINORI

## 500 WALL HUNG PAN



### REECE PRODUCT QUALITY GUARANTEE

You have purchased a quality product from Reece Pty Ltd ABN 84 004 097 090 ("Reece"). This product is covered by a 7 year replacement product warranty and a 12 month warranty over spare parts and labour.

#### 7 YEAR WARRANTY – DOMESTIC USE

This warranty covers faults in the product construction, material and assembly. Products which are within 7 years from the date of purchase, found upon inspection by an authorised Reece representative, to be defective in construction, material or assembly, will be repaired or exchanged with an equivalent product free of charge. Replaced items become Reece's property.

All replacement products will be available for collection without charge to the customer at the nearest Reece branch to the customer's location, or elsewhere as agreed between the customer and Reece.

#### Labour and Spare Parts

The labour for the replacement of products and spare parts to which this warranty applies will be supplied by Reece or relevant supplier using licensed plumbers engaged by Reece or relevant supplier within 1 year from the date of purchase.

Spare parts (includes the toilet seat) other which are within 1 year from the date of purchase found upon inspection by an authorised Reece representative to be defective in construction, material or assembly, will be replaced free of charge.

#### Warranty Conditions

This warranty will apply only under all of the following conditions:

- The item has been installed by a licensed plumber
- The item has been installed for and subjected to domestic residential use only
- Failure is due to a fault in the manufacture of the product
- Proof of purchase (including the date of purchase) is provided
- The installation of the product is in accordance with the instructions provided

This warranty does not cover products purchased as an ex-display without being fully checked and tested for sale by the manufacturer.

This warranty does not include faults caused by:

- Unsuitable or improper use
- Incorrect installation or installation not in accordance with the instructions provided
- Installation or part installation by the purchaser or any person other than a LICENSED PLUMBER
- Normal wear and tear
- Inadequate or complete lack of maintenance
- Chemical, electrochemical or electrical influences
- Harsh detergents or abrasive cleaners used on product finishes

#### 1 YEAR WARRANTY – COMMERCIAL USE

'Commercial' use is all use other than for normal domestic residential purposes, including use in non-business places as in public buildings, schools, sports centres and in establishments that contain private bathrooms with high frequency of use by many individuals, such as hotels, motels, retirement villages and hospitals.

The Commercial warranty covers this product against manufacturing faults in the construction, material and assembly of both the finished products and any spare parts for a period of 1 year from the date of purchase. Products and spare parts which are found upon inspection by an authorised Reece representative to be defective in construction, material or assembly will be repaired or exchanged free of charge. Replaced items become Reece's property. The labour for the replacement of products and spare parts to which this warranty applies will be supplied by Reece or relevant supplier using licensed plumbers engaged by Reece or relevant supplier. The Warranty Conditions and exclusions which apply to the domestic use warranty also apply to this commercial warranty.

#### EXCLUSIONS

To the fullest extent permitted by law, Reece excludes all liability for damage or injury to any person, damage to any property, and any indirect consequential or other loss or damage.

#### CLAIM PROCEDURE

For all warranty queries customers are to contact the branch where the product was purchased. These details can be found on your purchase invoice.

Our goods come with guarantees that cannot be excluded under the Australian Consumer Law. You are entitled to a replacement or refund for a major failure and for compensation for any other reasonably foreseeable loss or damage. You are also entitled to have the goods repaired or replaced if the goods fail to be of acceptable quality and the failure does not amount to a major failure.

Plumbers, please ensure a copy of the installation instructions is left with the end user for future reference

**Don't risk it, use a licensed plumber.™**

