

# VADA

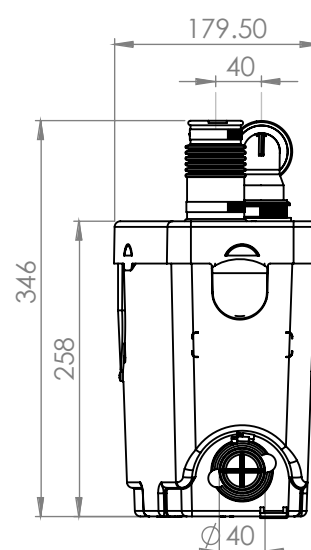
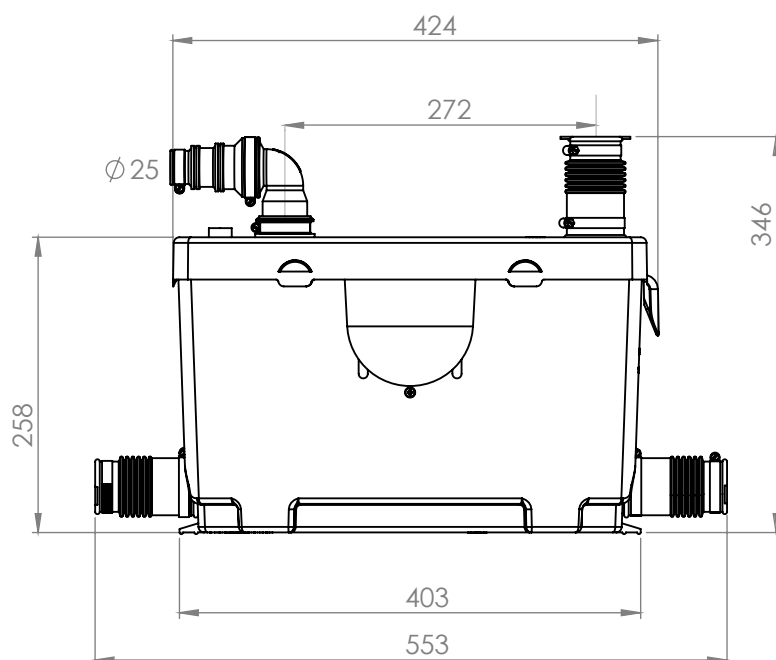
## COMMERCIAL LIFTING STATION

### SPECIFICATIONS

<b>Recommended use</b>	The Vada Commercial Lifting Station is a compact grey water pump designed for light commercial use only. The unit is designed to receive and pump away waste water from a washing machine, kitchen sink, dishwasher, bath, shower or basin.
<b>Reece Product Code and Description</b>	VADA COMMERCIAL LIFTING STATION
<b>Dimensions</b>	424 x 258 x 179.5 (W x H x D)
<b>Inlet Diameter</b>	40mm
<b>Vertical Pumping Height</b>	Up to 7 meters
<b>Horizontal Pumping Distance</b>	Up to 100 meters at 1% grade
<b>Maximum Temperature</b>	75°C
<b>Inlets</b>	3
<b>Electrical Power Supply</b>	220 - 240 V - 50 Hz
<b>Motor Power Rating</b>	400 W
<b>Recommended Discharge Pipe Size</b>	DN25 uPVC pressue pipe
<b>Alarm</b>	Optional
<b>Casing</b>	Grey
<b>Carbon Filter</b>	Optional
<b>Warranty</b>	2 years
<b>Standards</b>	ATS 5200.101:2005, WMKA 23048



### PRODUCT CONFIGURATION AND DIMENSIONS

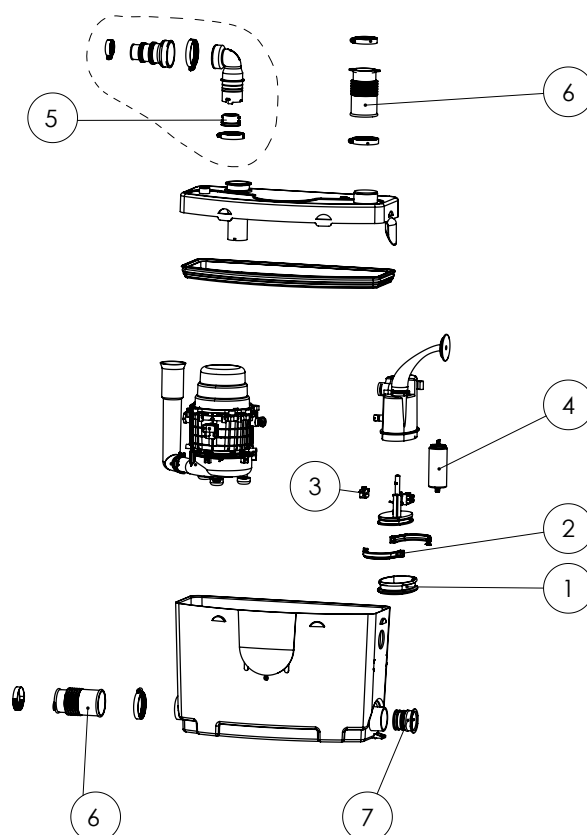


Disclaimer Products in this specification manual must by regulation be installed by licensed and registered trade people. The manufacturer/distributor reserves the right to vary specifications or delete models from their range without prior notification. Dimensions and set-outs listed are correct at time of publication however the manufacturer/distributor takes no responsibility for printing errors.

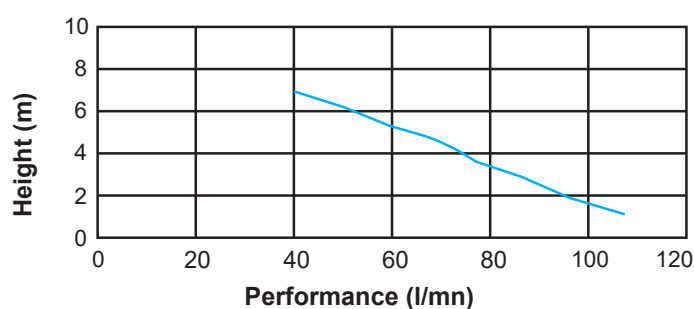
# VADA COMMERCIAL LIFTING STATION

## PARTS DIAGRAM

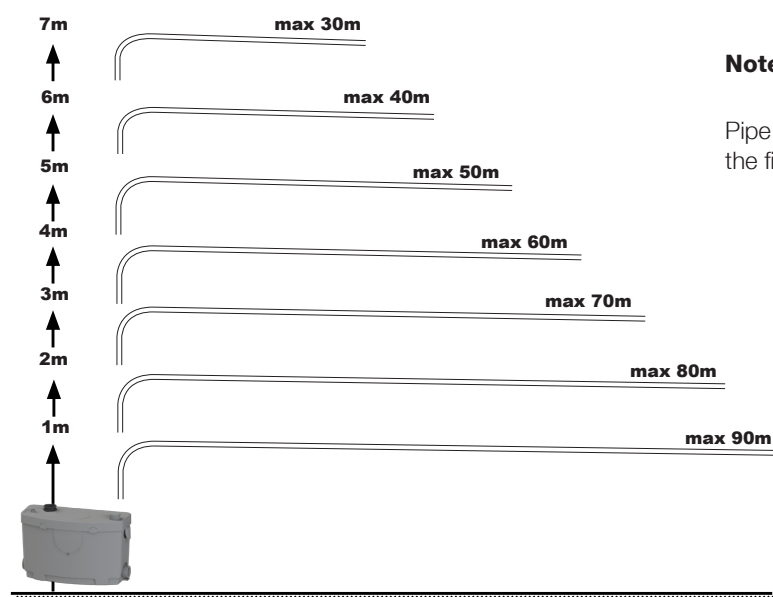
No	Description	Part No
1	Membrane	SI200184
2	1/2 membrane clip (unit)	VA100144
3	Micro switch type XGG	SA100140
4	Capacitor 8µf	CO100110
5	Discharge elbow set - black	CMNSAV
6	46/40 inlet connector - black	BL120163
7	Side plug with o-ring - grey	BOUCHCOMPGR



## FLOW CHARACTERISTICS

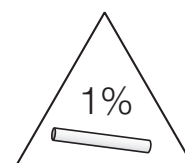


## PUMPING DISTANCE PERFORMANCE



**Note:** 1% fall minimum required on the horizontal run.

Pipe size must be increased by 1 size minimum after the first 5 meters of horizontal run



# VADA

## COMMERCIAL LIFTING STATION

### INSTALLATION INSTRUCTIONS

#### Important note:

- The lifting station should be installed to allow full access in the event that servicing or removal is required.
- The unit must be located on the same floor as the fittings it is to service.
- All incoming pipework must have a constant gradient of 1:40.
- The unit has 3 inlet ports. If an inlet is not in use, cap off the inlet with side plug (#7 on parts diagram).
- Where possible, venting should always be consistent to current plumbing venting requirements as per AS 3500.
- Before commissioning the unit, make sure all connections are secure and water tight.
- The electrical installation should be carried out by a registered electrician in accordance with AS/NZS 3000.
- AAV valves are not an alternative to venting to atmosphere as the unit needs to have two way venting for correct activation function.

#### Connecting incoming waste water:

1. Connect the first waste line by cutting off the seal cap at the top of the unit with either a stanley knife or hacksaw (or utilise the lower inlet connection).
2. Connect the inlet connector to the inlet and tighten with a metal hose clamp (Fig 1).  
Note: the small diameter faces the lid and the larger diameter is used for incoming waste.
3. To connect a shower/bath, ensure that the trap exit is at least 17cm above the floor level (Fig 2).

Note: The lid connection may be used to run an external air vent.

#### Connecting outgoing (discharge) waste water:

Note: Vertical lifts must occur prior to any horizontal runs, except for the initial short run at the pump connection, this should be NO MORE than 300mm in length.

Only ONE vertical lift is permitted in the discharge line, all changes of direction in the discharge line MUST be made with 45deg bends rather than 90deg bends.

1. Once the pipe is selected, insert the discharge elbow (#5 in parts diagram), into the rubber discharge pipe protruding from the lid.
2. Turn to the required direction and secure with a steel hose clip (Fig 3).
3. Trim the rubber step-down reducer to the discharge pipe and secure with a steel hose clip (Fig 4).
4. A PVC pressure ball valve must be installed on the pump line as close to the unit as possible.

FIG 1



FIG 2

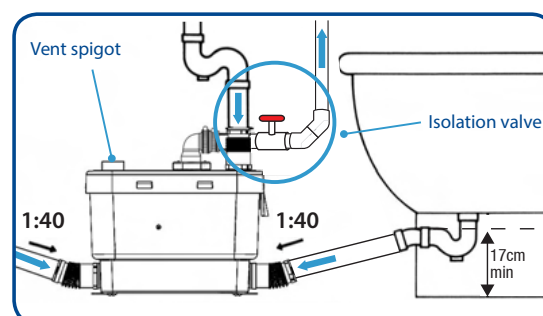
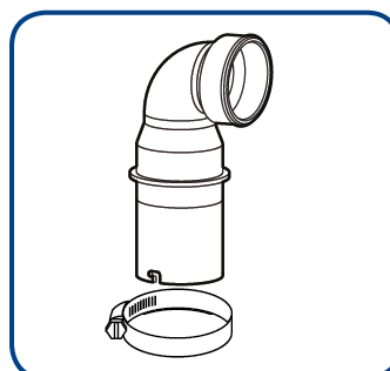


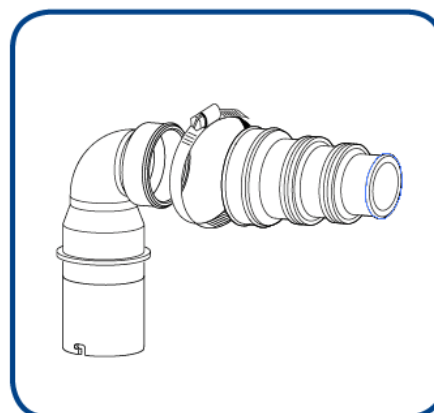
FIG 3



# VADA

## COMMERCIAL LIFTING STATION

FIG 4



### Commissioning:

- Once ALL connections are secure and before you switch the power on, run the cold water tap for approx 10 seconds and allow water to enter the pump.
- Then switch the power to the pump ON. Your pump should immediately activate and begin discharging into the discharge pipe system. Initial run time is normally between 5-10 seconds. Duration of run time is generally determined by the length of travel in the pump-out line.
- Pump operation will shut down after this time.

### Care and use:

- DO NOT dispose of solvents, paints, turps, caustic acid, or other corrosive acids or cleaners.
- DO NOT dispose of hot water in excess of 75°C.
- DO NOT use cleaning products that produce excessive foam, this may cause motor damage.
- DO NOT install in a hairdressing salon without the use of a hair trap first.
- DO NOT dispose excessive amount of coffee grinds.
- DO dispose of grey waste water ONLY.
- DO periodically clean the lifting station with a quality cleaning product on the market that is not acid/citric based.

### TROUBLESHOOTING:

SYMPTOMS	PROBABLE CAUSES	REMEDIES
The unit stops	<ul style="list-style-type: none"> <li>• Impeller is jammed</li> <li>• The unit has been running for too long and the (self re-setting) thermal cut out has been engaged</li> </ul>	<ul style="list-style-type: none"> <li>• Contact service/installation support</li> <li>• The unit will reset itself</li> </ul>
The motor intermittently activates	<ul style="list-style-type: none"> <li>• Dripping tap/fixtures</li> <li>• The non-return valve is faulty</li> </ul>	<ul style="list-style-type: none"> <li>• Check the installation upstream</li> <li>• Clean or replace the non-return valve (externally mounted)</li> </ul>
The motor operates normally, but continues to run for a long time	<ul style="list-style-type: none"> <li>• The length or height of the installation is over the specification, or there are too many bends/elbows</li> <li>• The pump line is blocked</li> <li>• An electrical component has failed</li> </ul>	<ul style="list-style-type: none"> <li>• Check the installation</li> <li>• Contact service/installation support</li> </ul>
The motor does not activate	<ul style="list-style-type: none"> <li>• The electrical power supply is not active</li> <li>• The motor or the control system is defective</li> </ul>	<ul style="list-style-type: none"> <li>• Restore the electrical supply</li> <li>• Contact service/installation support</li> </ul>
The motor hums but does not run	<ul style="list-style-type: none"> <li>• The motor or the control system is defective</li> </ul>	<ul style="list-style-type: none"> <li>• Contact service/installation support</li> </ul>

Service/installation support:

AUS: 1300 554 779

NZ: (09) 390 4615

# VADA

## COMMERCIAL LIFTING STATION



### REECE PRODUCT QUALITY GUARANTEE

You have purchased a quality product from Reece Australia Pty Ltd ABN 84 004 097 090 / Reece New Zealand Ltd ("Reece"). This product is covered by a 2 year product warranty.

### 2 YEAR WARRANTY

This warranty covers faults in the product construction, material and assembly. Products which are within 2 years from the date of purchase, found upon inspection by an authorised Reece representative, to be defective in construction, material or assembly, will be repaired or exchanged with an equivalent product free of charge. Replaced items become Reece's property.

All replacement products will be available for collection without charge to the customer at the nearest Reece branch to the customer's location, or elsewhere as agreed between the customer and Reece.

### Warranty Conditions

This warranty will apply only under all of the following conditions:

- The item has been installed by a licensed plumber
- Failure is due to a fault in the manufacture of the product
- Proof of purchase (including the date of purchase) is provided
- The installation of the product is in accordance with the instructions provided

This warranty does not cover products purchased as an ex-display without being fully checked and tested for sale by the manufacturer.

### This warranty does not include faults caused by:

- Unsuitable or improper use
- Incorrect installation or installation not in accordance with the instructions provided
- Installation or part installation by the purchaser or any person other than a LICENSED PLUMBER or tradesperson licensed to install this product.
- Normal wear and tear
- Inadequate or complete lack of maintenance
- Chemical, electrochemical or electrical influences
- Harsh detergents or abrasive cleaners used on product finishes

### EXCLUSIONS

To the fullest extent permitted by law, Reece excludes all liability for damage or injury to any person, damage to any property, and any indirect consequential or other loss or damage.

### CLAIM PROCEDURE

For all warranty queries customers are to contact the branch where the product was purchased. These details can be found on your purchase invoice.

Our goods come with guarantees that cannot be excluded under the Australian Consumer Law & the Consumer Guarantees Act 1993 (NZ). You are entitled to a replacement or refund for a major failure and for compensation for any other reasonably foreseeable loss or damage. You are also entitled to have the goods repaired or replaced if the goods fail to be of acceptable quality and the failure does not amount to a major failure.

Tech page version 3

Plumbers/Contractors, please ensure a copy of the installation instructions is left with the end user for future reference.

**Don't risk it, use a licensed plumber.™**

