

MIZU

BLISS SHOWER MIXER TAP WITH DIVERTER

INSTALLATION INSTRUCTIONS

Important Note

Mixer must be installed to the requirement of AS/NZS 3500 by a licensed plumber. Your mixer comes to you factory assembled and tested. We do not recommend the dismantling of any internal part of the mixer. The mixers are factory tested and sealed so as to give the best performance.

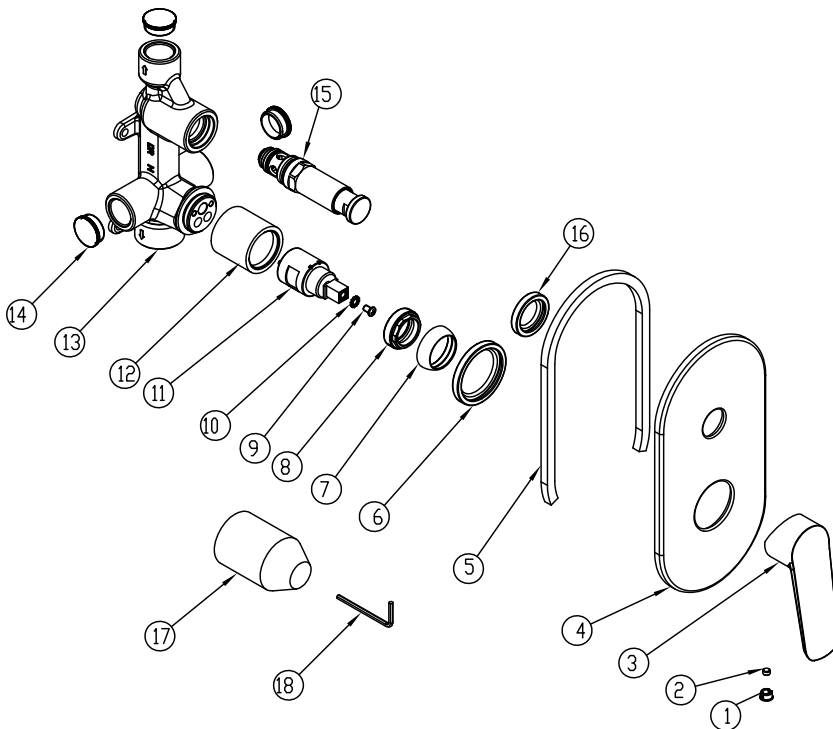
Mixers are recommended for use on mains pressure and instantaneous systems only. Equal pressure for hot and cold water supply is required for this single lever mixer.

1. Please flush out new pipe work prior to connecting the new mixer.
2. During installation protect the exposed surface finish by using the plastic cover provided.

3. In a typical installation, the mixer is mounted on a timber/ metal noggin and secured using suitable screws through the mounting lugs.

NOTE: Arrow stamped on the outlet must face up towards shower (as shown in the exploded view below).

4. Connect mixer to hot and cold water supply.
5. Connect to bath and shower outlet.
6. Pressure check all connections. Leaking joints are not covered by the warranty.
7. When the wall is finished (eg. tiling), remove the plastic cover and fit the cover plate and handle.



EXPLODED VIEW

Item	Description
1	Decorative Cover
2	Grub Screw
3	Mixer Handle
4	Mixer Cover Plate
5	Seal
6	Washer
7	Cartridge Dome
8	Cartridge Lock Nut
9	Fixing Screw
10	Washer
11	Cartridge Body
12	Cartridge Sleeve
13	Mixer Body
14	Inlet Cover
15	Diverter Button Assembly
16	Diverter Button Washer
17	Protective Cover
18	Allen Key